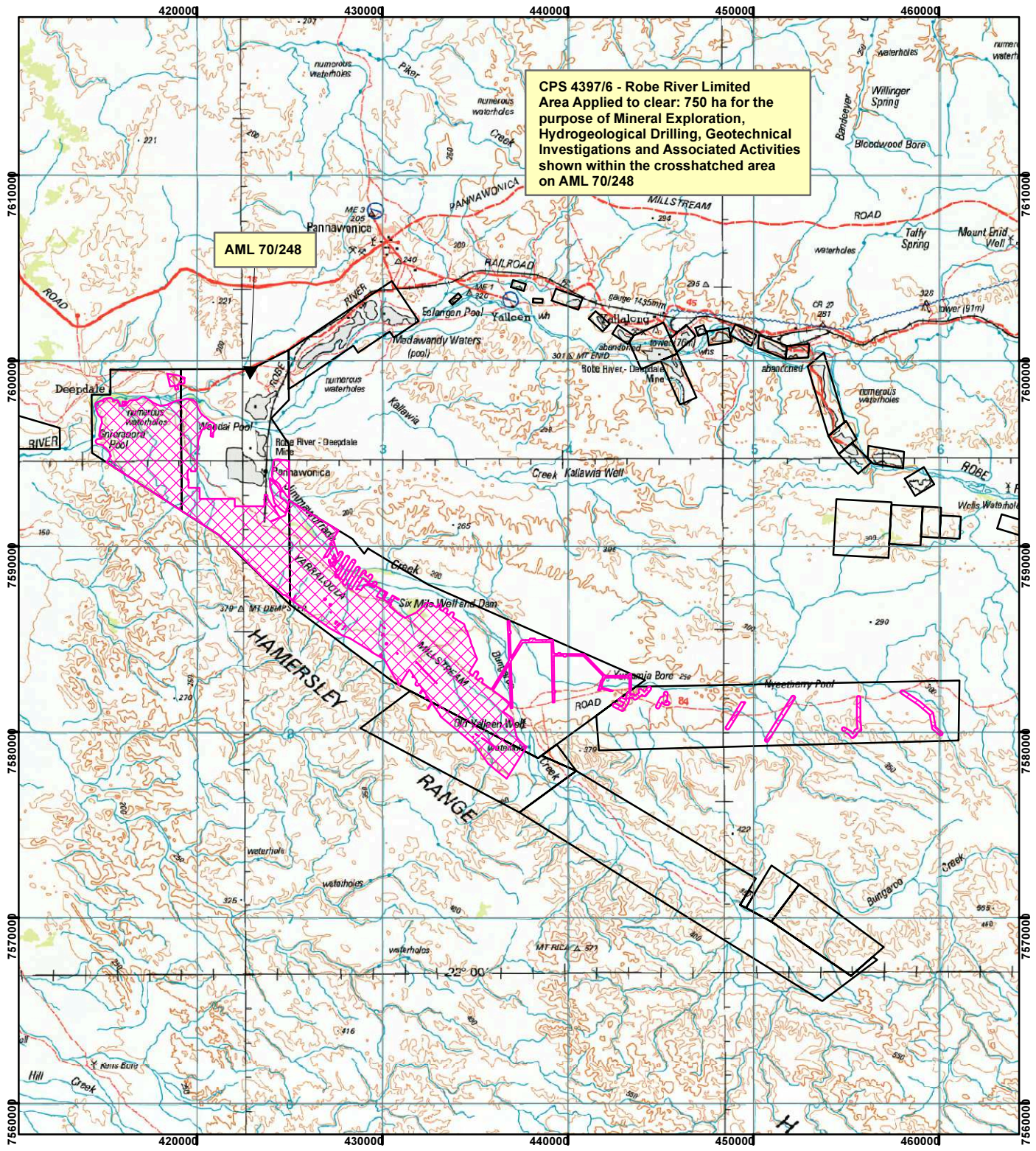


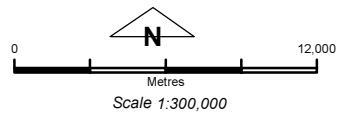
CPS 4397/6 - Robe River Limited

CPS 4397/6 - Robe River Limited
 Area Applied to clear: 750 ha for the
 purpose of Mineral Exploration,
 Hydrogeological Drilling, Geotechnical
 Investigations and Associated Activities
 shown within the crosshatched area
 on AML 70/248

AML 70/248



- Legend**
-  Clearing Instruments
 - Mining Tenements**
 - FMT_TENID**
 -  ML 248SA



Geocentric Datum Australia 1994
 Note: the data in this map have not been
 projected. This may result in geometric
 distortion or measurement inaccuracies.

..... Date

Officer with delegated authority under Section 20 of
 the Environmental Protection Act 1986

Information derived from this map should be
 confirmed with the data custodian acknowledged
 by the agency acronym in the legend.

