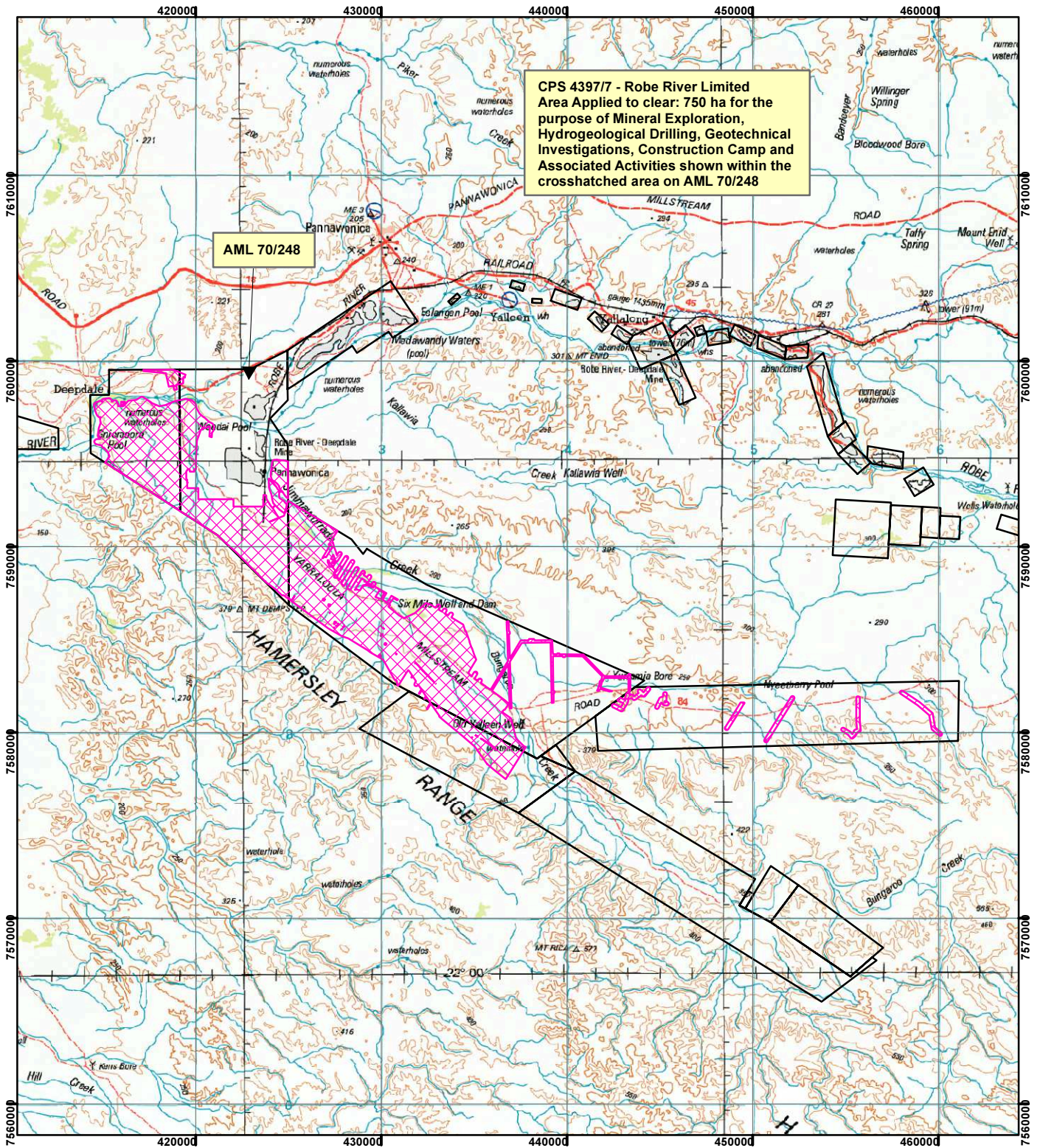



# CPS 4397/7 - Robe River Limited



CPS 4397/7 - Robe River Limited  
 Area Applied to clear: 750 ha for the  
 purpose of Mineral Exploration,  
 Hydrogeological Drilling, Geotechnical  
 Investigations, Construction Camp and  
 Associated Activities shown within the  
 crosshatched area on AML 70/248

AML 70/248

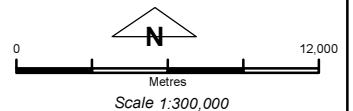
## Legend

 Clearing Instruments

## Mining Tenements

### FMT\_TENID

 ML 248SA



Geocentric Datum Australia 1994

Note: the data in this map have not been projected. This may result in geometric distortion or measurement inaccuracies.

..... Date .....

Officer with delegated authority under Section 20 of the Environmental Protection Act 1986

Information derived from this map should be confirmed with the data custodian acknowledged by the agency acronym in the legend.

