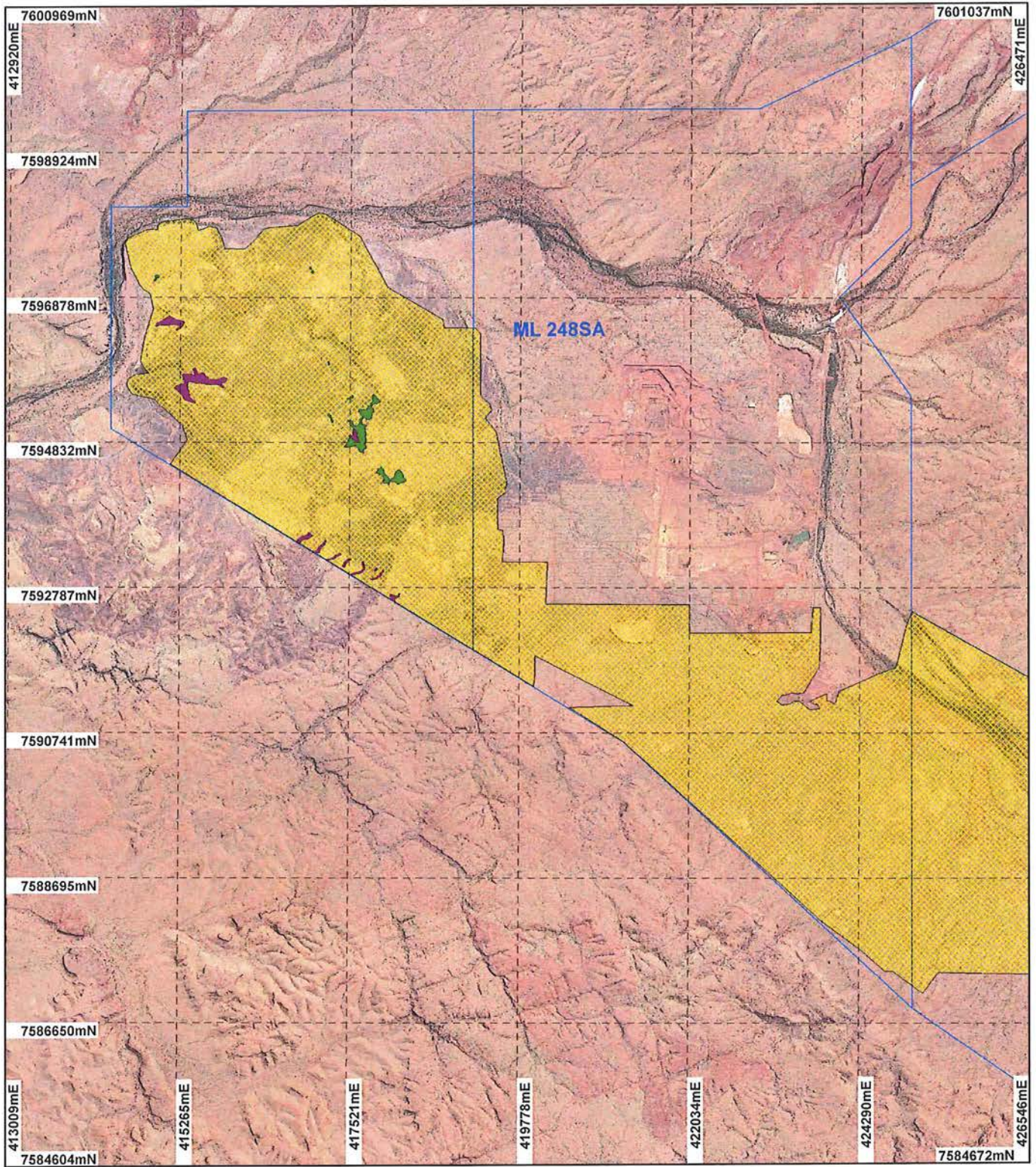
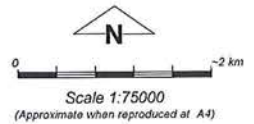


# PLAN 4397/3A



## LEGEND

- |  |                             |
|--|-----------------------------|
| Mining Tenements                             | Clearing Instruments_3      |
| Clearing Instruments                         | Areas Subject to Conditions |
| Areas Approved to Clear                      | Clearing Instruments_4      |
| Pannawonica 1.4m Orthomosaic - Landgate 2000 | Areas Subject to Conditions |



Geocentric Datum Australia 1994  
 Note: the data in this map have not been projected. This may result in geometric distortion or measurement inaccuracies.

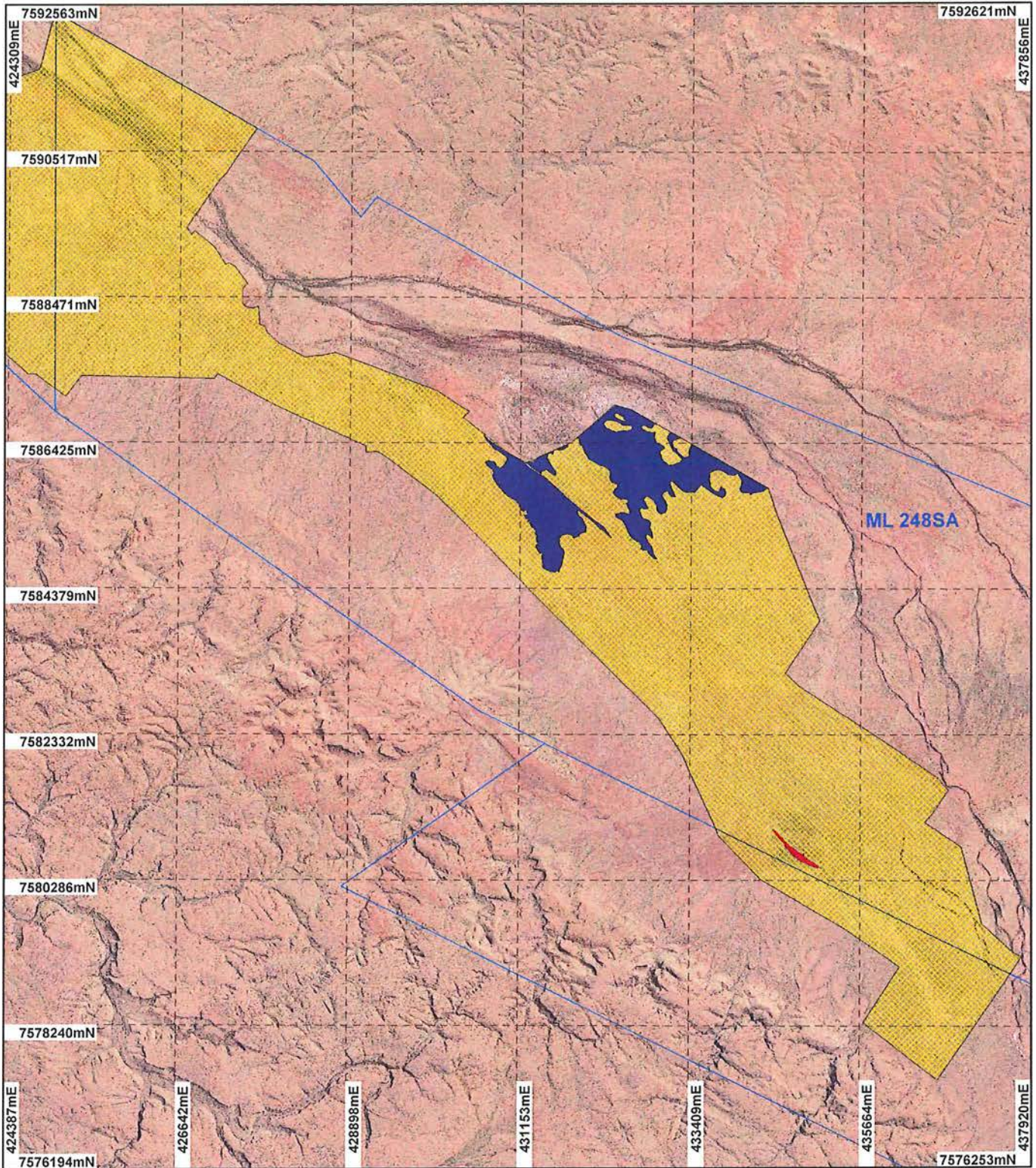
Date 12/3/15

**STEVE TANTALA**  
 Officer with delegated authority under Section 20 of the Environmental Protection Act 1986

Information derived from this map should be confirmed with the data custodian acknowledged by the agency acronym in the legend.



# PLAN 4397/3B



## LEGEND

- |                             |                               |
|-----------------------------|-------------------------------|
| Mining Tenements            | Clearing Instruments_2        |
| Clearing Instruments        | Areas Subject to Conditions   |
| Areas Approved to Clear     | <b>Pannawonjca 1.4m</b>       |
| Clearing Instruments_1      | <b>Orthomosaic - Landgate</b> |
| Areas Subject to Conditions | <b>2000</b>                   |

0 ————— 2 km  
 Scale 1:75000  
 (Approximate when reproduced at A4)

Geocentric Datum Australia 1994  
 Note: the data in this map have not been projected. This may result in geometric distortion or measurement inaccuracies.

Date 19/8/15  
**STEVE TANTALA**

Officer with delegated authority under Section 20 of the Environmental Protection Act 1986

Information derived from this map should be confirmed with the data custodian acknowledged by the agency acronym in the legend.

