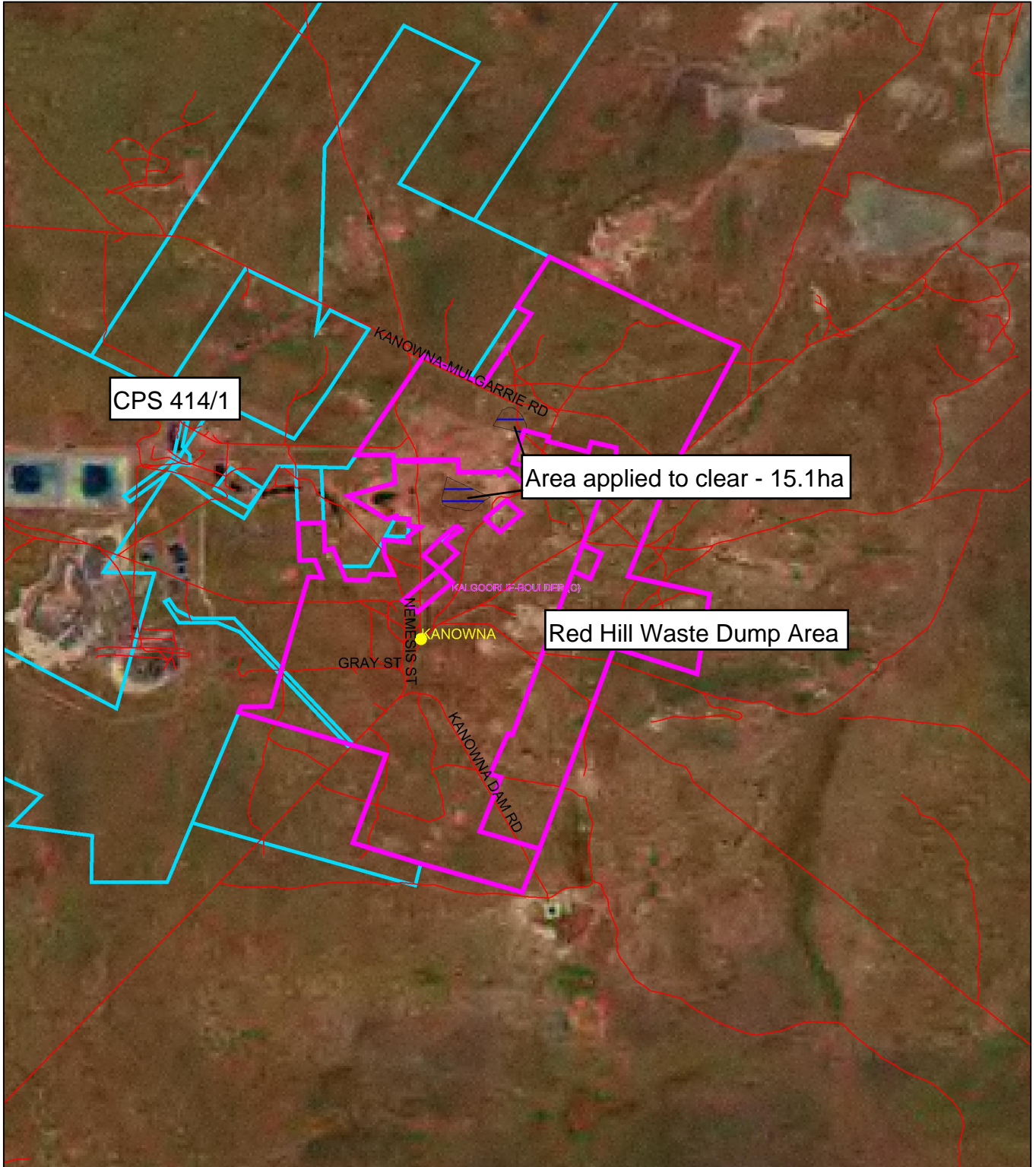


Application CPS 446/1



LEGEND

Land parcels related to instrument

Clearing Instruments

- | | | | |
|--|-------|--|-------|
| | 10/1 | | 298/1 |
| | 100/1 | | 299/1 |
| | 101/1 | | 3/1 |
| | 103/1 | | 30/1 |
| | 104/1 | | 300/1 |
| | 105/1 | | 301/1 |
| | 107/1 | | 302/1 |
| | 108/1 | | 303/1 |
| | 109/1 | | 309/1 |
| | 111/1 | | 31/1 |
| | 110/1 | | 310/1 |
| | 112/1 | | 311/1 |
| | 113/1 | | 313/1 |
| | 114/1 | | 314/1 |
| | 115/1 | | 315/1 |
| | 116/1 | | 319/1 |
| | 117/1 | | 322/1 |
| | 118/1 | | 323/1 |
| | 119/1 | | 325/1 |
| | | | 327/1 |
| | | | 328/1 |
| | | | 329/1 |
| | | | 330/1 |
| | | | 334/1 |

Cadastre - DLI 1/09/04

Towns - DLI 8/04

Image Index - Air Photos - January 2005

IntraGIS

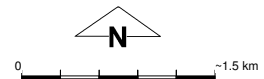
New

Western Australia ETM 25m
543 - AGO 02

Local Government Authorities - DLI 8/07/04

Clearing Instruments1

- | | | | |
|--|-------|--|-------|
| | 10/1 | | 286/1 |
| | 100/1 | | 287/1 |
| | 101/1 | | 288/1 |
| | 103/1 | | 289/1 |
| | 104/1 | | 290/1 |
| | 105/1 | | 291/1 |
| | 107/1 | | 292/1 |
| | 108/1 | | 293/1 |
| | 109/1 | | 294/1 |
| | 11/1 | | 298/1 |
| | | | 299/1 |
| | | | 3/1 |
| | | | 30/1 |
| | | | 300/1 |
| | | | 301/1 |
| | | | 302/1 |
| | | | 303/1 |
| | | | 309/1 |
| | | | 31/1 |
| | | | 310/1 |
| | | | 311/1 |
| | | | 313/1 |
| | | | 314/1 |
| | | | 344/1 |



Scale 1:58622

(Approximate when reproduced at A4)

Geocentric Datum Australia 1994

Note: the data in this map have not been projected. This may result in geometric distortion or measurement inaccuracies.

..... Date

Information derived from this map should be confirmed with the data custodian acknowledged by the agency acronym in the legend.