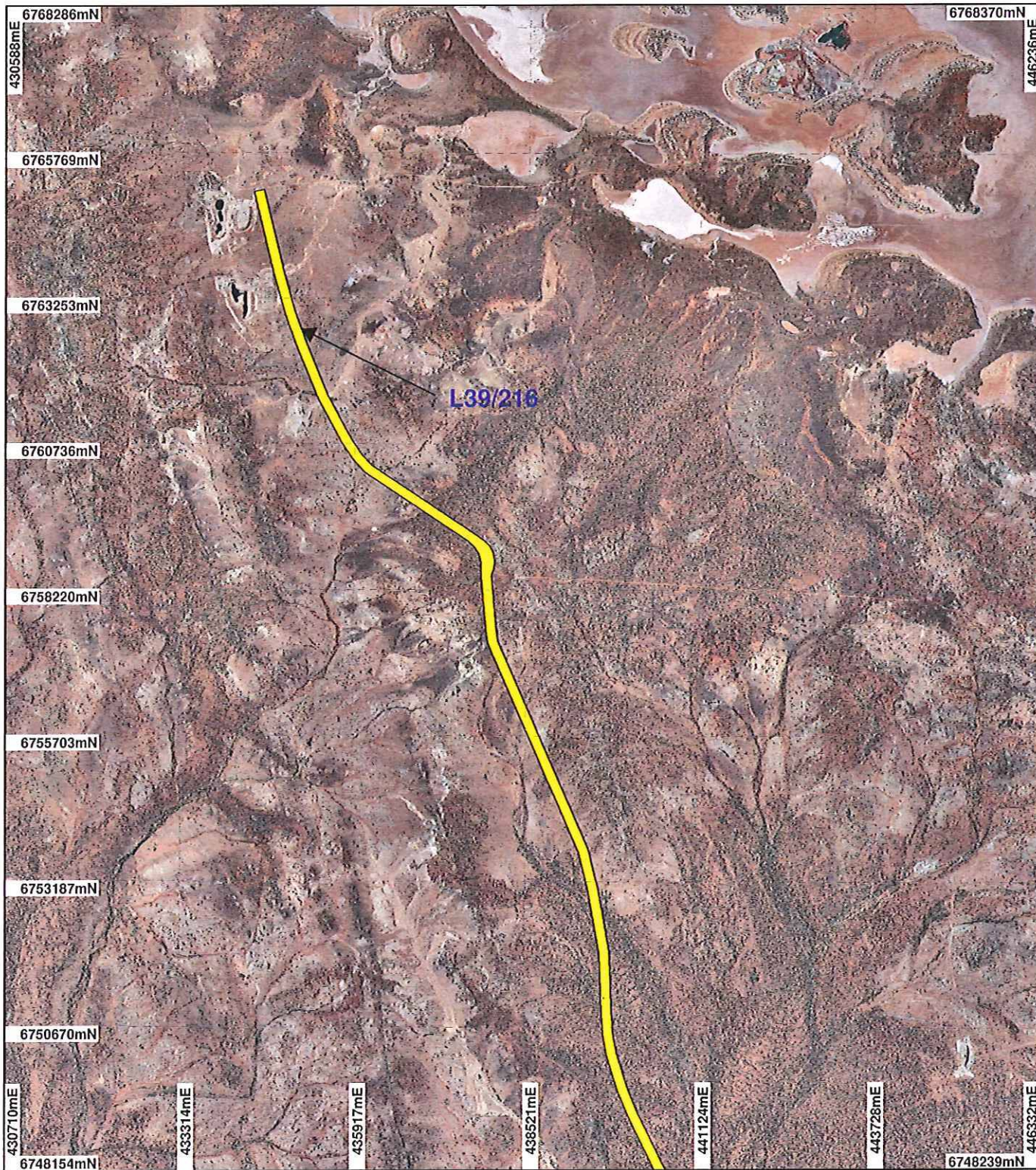


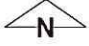
# PLAN 4461/1A



## LEGEND

- Mining Tenements
- Clearing Instruments
- Areas Subject to Conditions
- Areas Approved to Clear

Lake Carey 50cm Orthomosaic  
- Landgate 2006

  
 0 -2.5km  
 Scale 1:90000  
 (Approximate when reproduced at A4)  
 Geocentric Datum Australia 1994  
 Note: the data in this map have not been projected. This may result in geometric distortion or measurement inaccuracies.

 Date 1/9/2011  
 PHIL GOREY

Officer with delegated authority under Section 20 of the Environmental Protection Act 1986

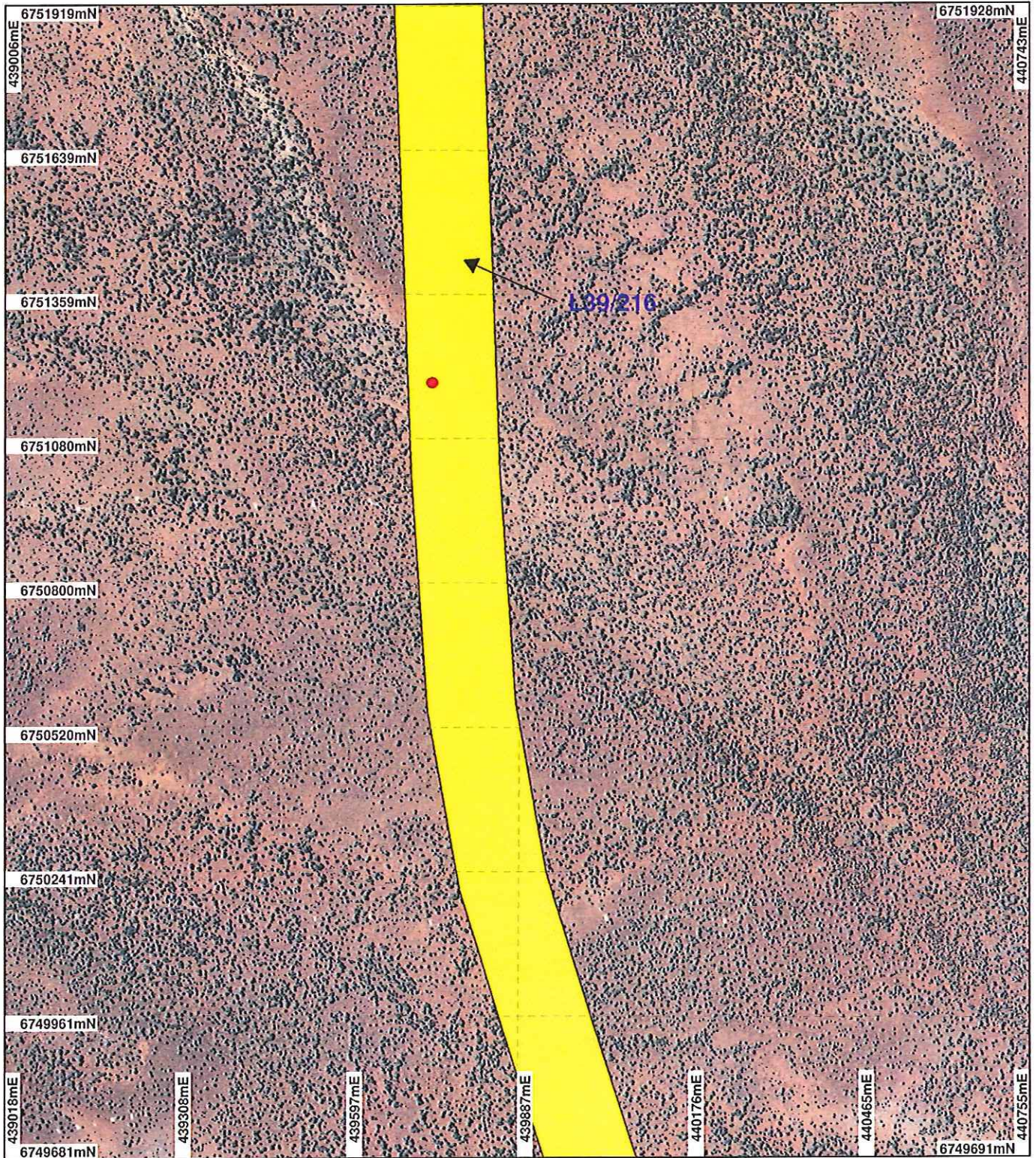
Information derived from this map should be confirmed with the data custodian acknowledged by the agency acronym in the legend.



WA Crown Copyright 2002

\* Project Data. This data has not been quality assured. Please contact map author for details.

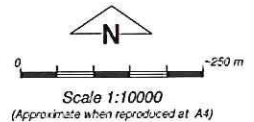
# PLAN 4461/1B



## LEGEND

- Mining Tenements
- Clearing Instruments
- Areas Subject to Conditions
- Areas Approved to Clear

Lake Carey 50cm Orthomosaic  
- Landgate 2006



Geocentric Datum Australia 1994

Note: the data in this map have not been projected. This may result in geometric distortion or measurement inaccuracies.

PHIL GOREY Date 4/9/2016  
Officer with delegated authority under Section 20 of the Environmental Protection Act 1986

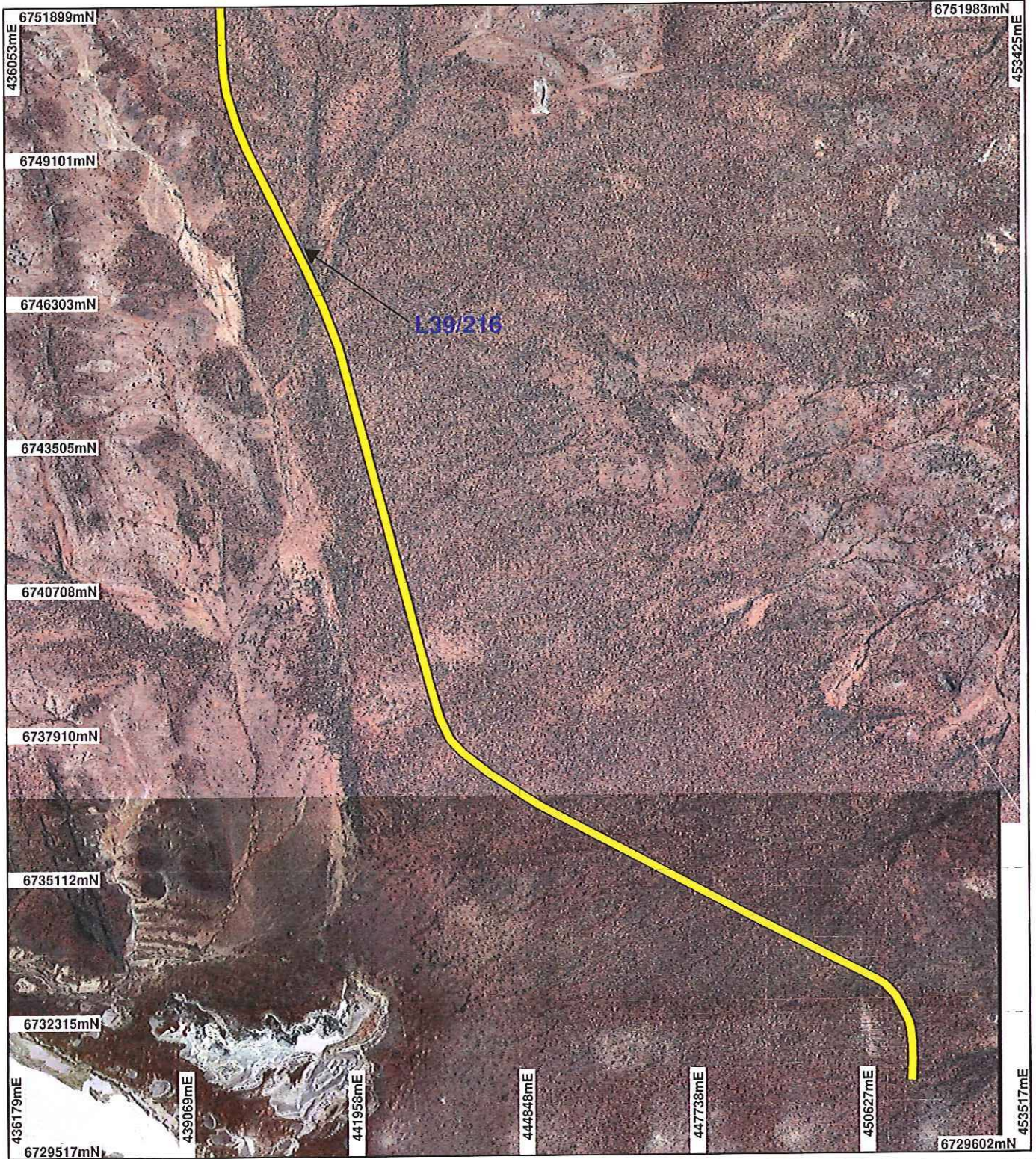
Information derived from this map should be confirmed with the data custodian acknowledged by the agency acronym in the legend.



WA Crown Copyright 2002

\* Project Data. This data has not been quality assured. Please contact map author for details.

# PLAN 4461/1C



## LEGEND

- Mining Tenements
- Clearing Instruments
- Areas Subject to Conditions
- Areas Approved to Clear

Lake Carey 50cm Orthomosaic - Landgate 2006  
Edjudina 1.4m Orthomosaic - Landgate 2003



0 ————— 2.5 km

Scale 1:100000

(Approximate when reproduced at A4)

Geocentric Datum Australia 1994

Note: the data in this map have not been projected. This may result in geometric distortion or measurement inaccuracies.

PHIL GOREY

Date 1/9/2011

Officer with delegated authority under Section 20 of the Environmental Protection Act 1986

Information derived from this map should be confirmed with the data custodian acknowledged by the agency acronym in the legend.



WA Crown Copyright 2002