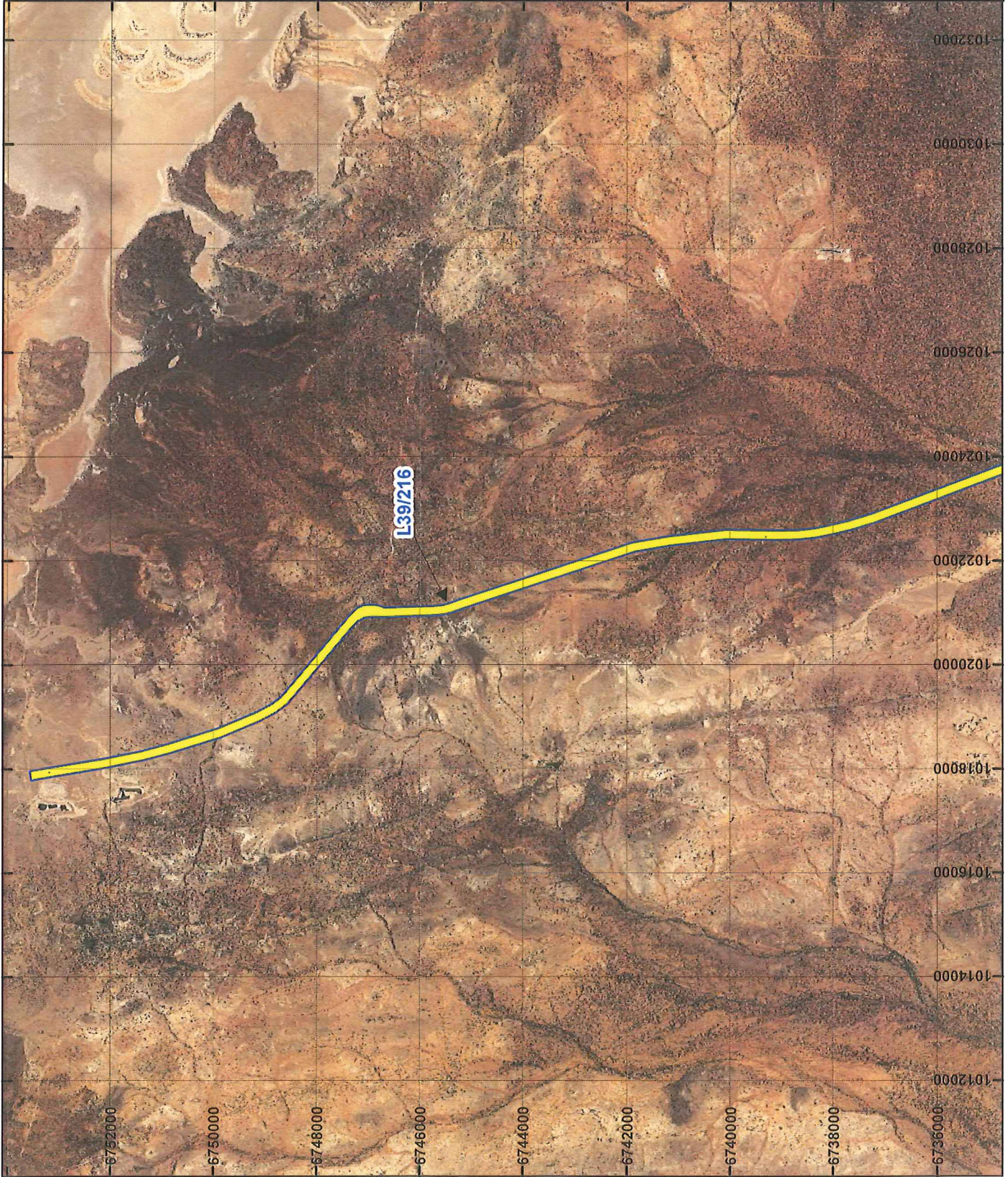


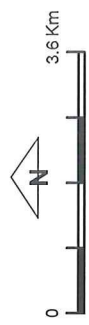


PLAN 4461/2A



LEGEND

-  Mining Tenements
-  Clearing Instruments Areas Approved to Clear
-  SEAMLESS MOSAIC



Scale 1:100,000
(Approximate when reproduced at A4)

Geocentric Datum Australia 1994

Note: the data in this map have not been projected. This may result in geometric distortion or measurement inaccuracies.

M. *[Signature]* 14/7/16
Date

MARNIE LEYBOURNE
Officer with delegated authority under Section 20 of the Environmental Protection Act 1986

Information derived from this map should be confirmed with the data custodian acknowledged by the agency acronym in the legend.



PLAN 4461/2B

LEGEND

- Mining Tenements
- Clearing Instruments
- Areas Approved to Clear
- Areas Subject to Conditions
- SEAMLESS MOSAIC



Geocentric Datum Australia 1994

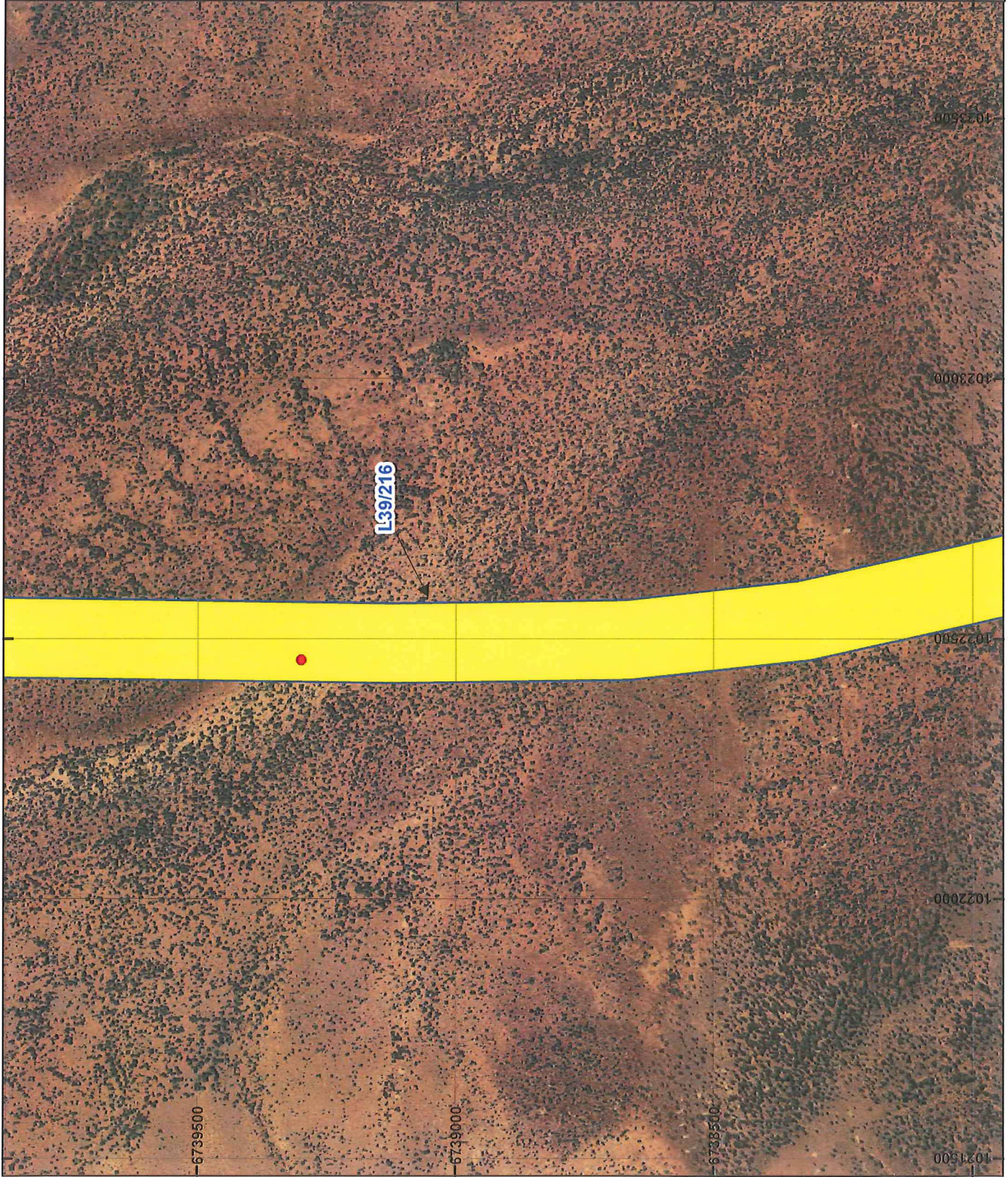
Note: the data in this map have not been projected. This may result in geometric distortion or measurement inaccuracies.

M. N. R. 17/11/16

MARNIE LEYBOURNE

Officer with delegated authority under Section 20 of the Environmental Protection Act 1986

Information derived from this map should be confirmed with the data custodian acknowledged by the agency acronym in the legend.



PLAN 4461/2C



LEGEND

- Mining Tenements
- Clearing Instruments
- Areas Approved to Clear
- SEAMLESS MOSAIC



Scale 1:110,000
(Approximate when reproduced at A4)

Geocentric Datum Australia 1994
Note: the data in this map have not been projected. This may result in geometric distortion or measurement inaccuracies.

M. V. K. 14/7/16
MARNIE LEYBOURNE Date

Officer with delegated authority under Section 20 of the Environmental Protection Act 1986

Information derived from this map should be confirmed with the data custodian acknowledged by the agency acronym in the legend.

