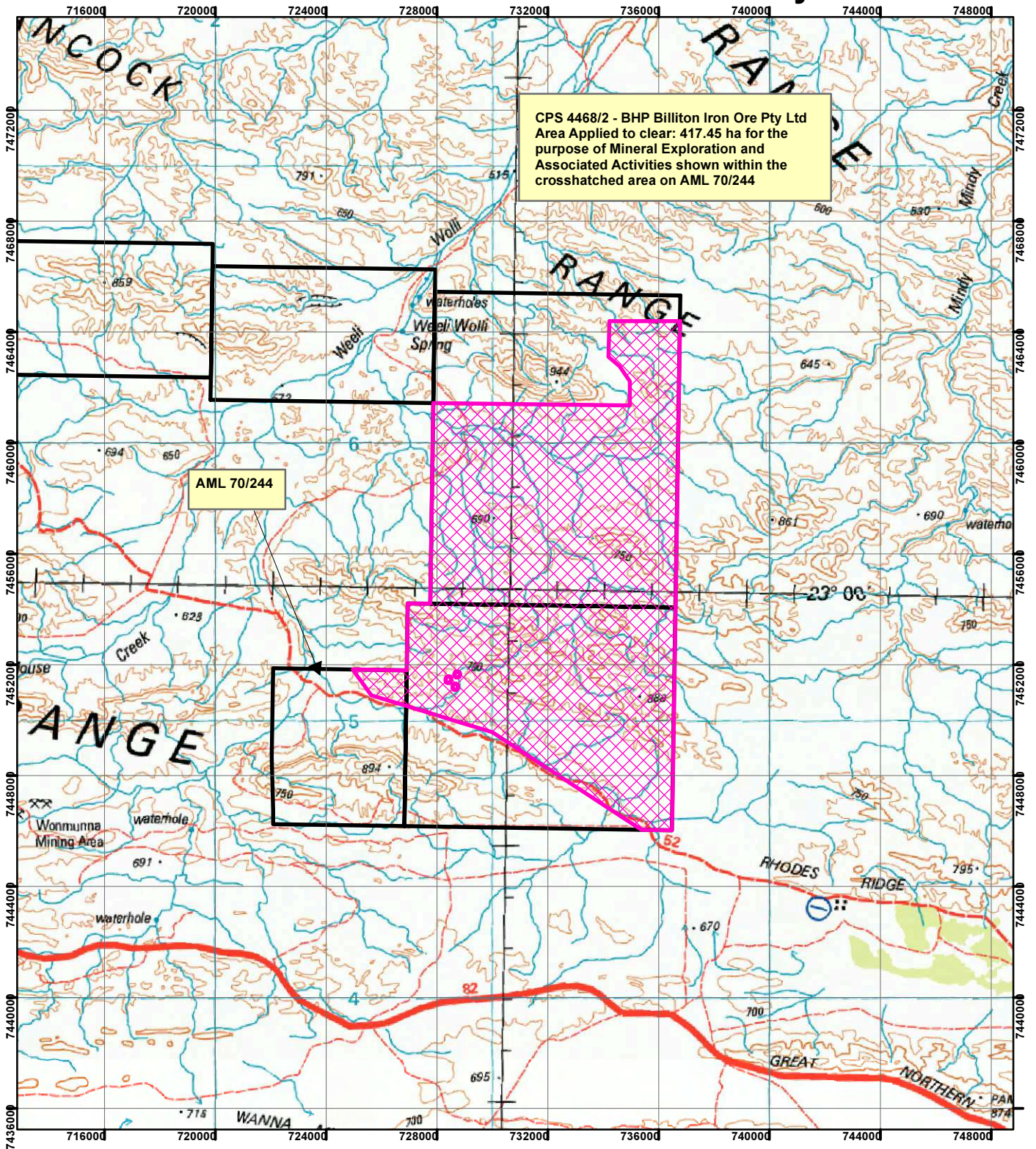


CPS 4468/2 - BHP Billiton Iron Ore Pty Ltd

CPS 4468/2 - BHP Billiton Iron Ore Pty Ltd
Area Applied to clear: 417.45 ha for the
purpose of Mineral Exploration and
Associated Activities shown within the
crosshatched area on AML 70/244

AML 70/244



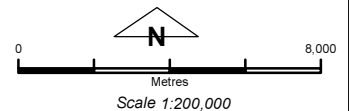
Legend

Clearing Instruments

Mining Tenements

FMT_TENID

ML 244SA



Geocentric Datum Australia 1994

Note: the data in this map have not been
projected. This may result in geometric
distortion or measurement inaccuracies.

..... Date

Officer with delegated authority under Section 20 of
the Environmental Protection Act 1986

Information derived from this map should be
confirmed with the data custodian acknowledged
by the agency acronym in the legend.

