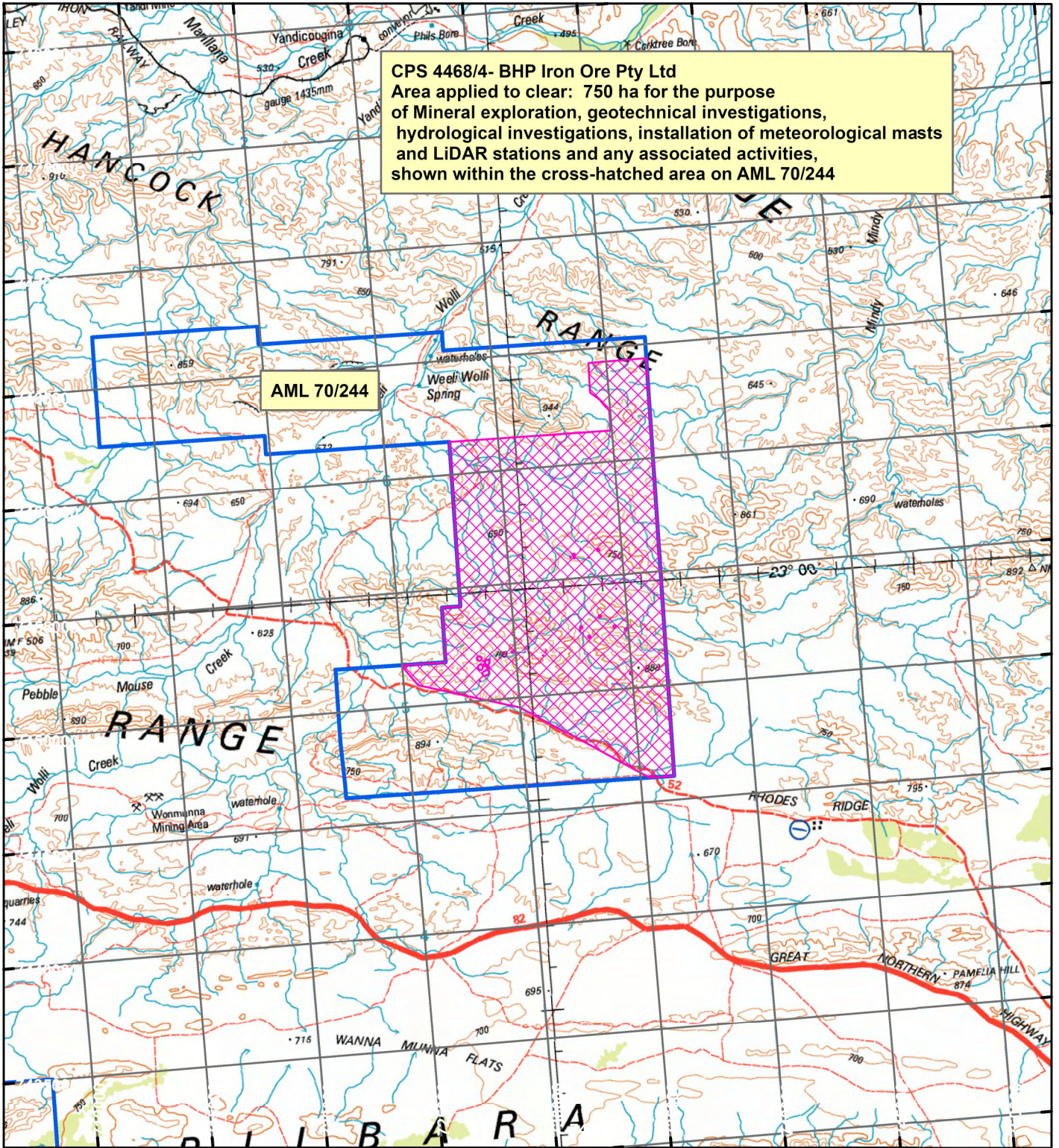


CPS 4468/4 - BHP Iron Ore Pty Ltd



CPS 4468/4- BHP Iron Ore Pty Ltd
 Area applied to clear: 750 ha for the purpose
 of Mineral exploration, geotechnical investigations,
 hydrological investigations, installation of meteorological masts
 and LiDAR stations and any associated activities,
 shown within the cross-hatched area on AML 70/244

LEGEND



Clearing Instruments



Mining Tenements



Scale 1:250,000

(Approximate when reproduced at A4)

Geocentric Datum Australia 1994

Note: the data in this map have not been projected. This may result in geometric distortion or measurement inaccuracies.

..... Date

Officer with delegated authority under Section 20 of the Environmental Protection Act 1986

Information derived from this map should be confirmed with the data custodian acknowledged by the agency acronym in the legend.