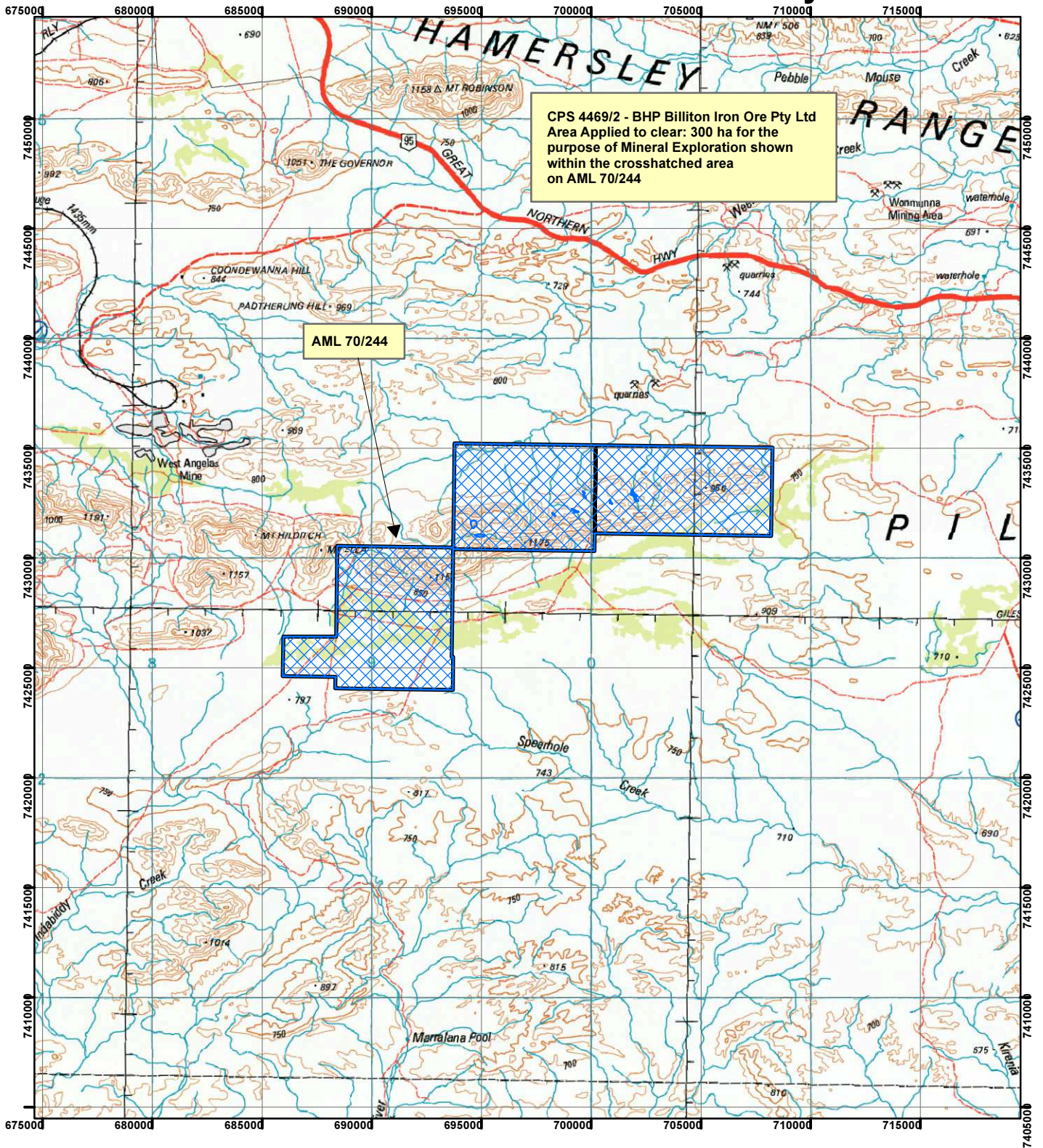



CPS 4469/2 - BHP Billiton Iron Ore Pty Ltd



CPS 4469/2 - BHP Billiton Iron Ore Pty Ltd
 Area Applied to clear: 300 ha for the
 purpose of Mineral Exploration shown
 within the crosshatched area
 on AML 70/244

AML 70/244

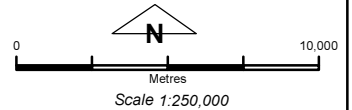
Legend

 Clearing Instruments

Mining Tenements

FMT_TENID

 ML 244SA



Geocentric Datum Australia 1994

Note: the data in this map have not been projected. This may result in geometric distortion or measurement inaccuracies.

..... Date

Officer with delegated authority under Section 20 of the Environmental Protection Act 1986

Information derived from this map should be confirmed with the data custodian acknowledged by the agency acronym in the legend.

