



**ATTACHMENTS FOR PART 7: RECORDS KEPT UNDER THE EXISTING
CLEARING PERMIT'S CONDITIONS CPS 4526**

1. The total amount, location(s), and date(s) of clearing done under the permit (or within the past five years).

The total amount, location and dates of clearing done under CPS 4526 is detailed in Table 1 and shown in Figure 1.

Table 1. Amount, location and date of clearing undertaken under CPS 4526 since first permit issue

Tenement Where Clearing Occurred	Year Clearing Occurred	Amount of Area Cleared (ha)
L52/125	2011	0.017
L52/137	2011	10.37
L52/152	2011	0.017
Grand Total All Tenements		10.41

2. Actions taken to avoid or minimise the impact and extent of clearing.

As per site procedures, wherever possible, the need to clear native vegetation is avoided and/or minimised. The DeGrussa Copper Project also utilises an internal permitting system to authorise land disturbance, which provides an opportunity to further evaluate the need to clear native vegetation prior to an activity being undertaken. Existing cleared or disturbed areas are utilised in preference to clearing new areas, and the internal permitting procedures requires employees and contractors to pre-plan development and clearing activities to minimise impact on vegetation and avoid areas of high environmental value.

When clearing is undertaken, survey control and supervision is utilised during active clearing to ensure that no unnecessary clearing occurs and that boundaries are strictly adhered to. Cleared areas are checked for compliance to internal permit areas at the conclusion of clearing activities.

Employees are also provided with training and awareness regarding native vegetation and the site-specific restrictions on causing damage to, or clearing of, native vegetation without the necessary approvals.

In the case of the borefield area, maintenance activities include the occasional clearing of vegetation that may have grown around water abstraction infrastructure and groundwater monitoring bores (e.g., groundwater bores, electrical panels), as well as maintaining cleared areas under the power line infrastructure that provides power to borefield pumps. Methods used include the trimming of vegetation rather than removing the entire plant, such as mowing, whipper snipping tall grasses, or trimming tree branches.

3. Actions taken in relation to flora and/or fauna management.

In addition to the above actions outlined in Item 2 above, the following actions are undertaken in relation to flora and/or fauna.

Weeds

Weed hygiene inspections are performed on all ground engaging machinery and vehicles mobilised to the Project site. Non-compliant vehicles are either sent offsite, or to on-site

washdown facilities, to remove material that may contain weeds, seeds or foreign vegetative matter.

Known weed populations are controlled on-site through both manual removal of vegetative matter and/or spraying of selective herbicides. Inspections of the Project site are carried out weekly during cooler months (April through November), and any weed populations identified are controlled via the above methods.

Weed occurrences and control activities are recorded in the site's geospatial database, ensuring that populations can be tracked, and the movement of contaminated soils avoided.

General movement of vehicles onsite is restricted to designated roads and tracks, to avoid the inadvertent introduction of weeds. Driving "off-road" is not permitted.

If fill material is required, it is sourced from designated weed-free locations (i.e. the DeGrussa borrow pit, located north of the Paste Plant).

Significant Flora

Baseline flora surveys identified the location of significant flora and vegetation types at the Project. The location of significant flora and vegetation is queried as part of the internal permitting system process, and actions are taken to avoid or minimise the impact to this flora.

Fauna

Clearing is staged or progressed directional to allow mobile fauna to escape the area safely.

Where possible, habitat features, such as hollow-bearing trees and large logs, are retained or salvaged for use in rehabilitation.

4. Actions taken to revegetate or rehabilitate the areas cleared under the permit

Of the total cleared land under CPS 4526 (10.41ha), no areas have been subject to revegetation activities. As the borefield and associated infrastructure is still in use, and areas in and surrounding this infrastructure need to be maintained to allow for groundwater abstractions and monitoring of groundwater quality and quantity, there are currently limited opportunities to commence revegetation efforts within the NVCP area.

However, once the borefield is no longer in use and is decommissioned, revegetation activities as described in the DeGrussa Mine Closure Plan (DCM-ENV-MP-3, RegID 123808) will commence.

5. Records pertaining to any onsite or offsite environmental offsets.

Not applicable.

6. Item 6. Any other relevant records required to be kept by the conditions of the permit.

Condition 7 of CPS 4526 requires the following records to be kept in relation to the clearing of native vegetation authorised under this Permit

- Condition 7(a)(i) The location where clearing has occurred, recorded using a Global Positioning System (GPS) unit set to Geocentric Datum Australia (GDA94), expressing the geographical coordinates in Eastings and Northings or decimal degrees
- Condition 7(a)(ii) The date the area was cleared

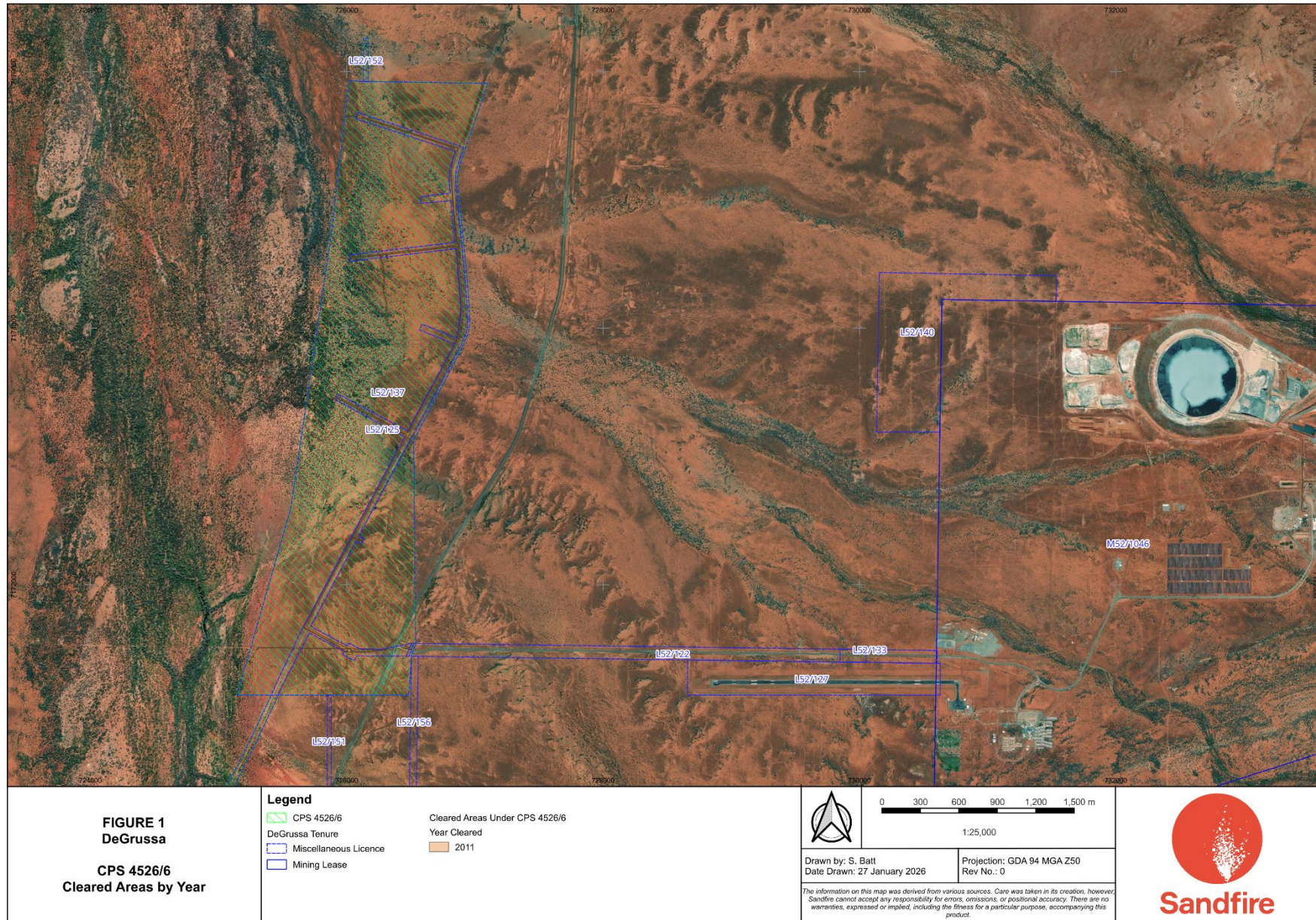
- Condition 7(a)(iii) The size of the area cleared (in hectares)
- Condition 7(a)(iv) The purpose for which clearing was undertaken
- Condition 7(b) Actions taken to avoid, minimise and reduce the impacts and the extent of clearing in accordance with Condition 5 of this Permit
- Condition 7(c) Actions taken to minimise the introduction and spread of *weeds* in accordance with Condition 6 of this Permit.

In reference to Condition 7(a)(i) – (iv), records of clearing under CPS 4526 are maintained in the DeGrussa geospatial database. The file format provides an accurate geospatial reference of where clearing has occurred, and each record is assigned unique attributes that detail the date (by year) that clearing occurred, the size of the area cleared, and the purpose for the clearing, as well as other attributes that allow for querying of the geospatial data.

A map showing the location and year that clearing has occurred under CPS 4526/8 is shown in Figure 1. Figure 2 shows the location and purpose that clearing was undertaken for. Table 2 is a download of the attribute data associated with the geospatial data described above and includes details of the purpose for which clearing was undertaken (Condition 7(a)(iv).

Actions to satisfy compliance to Condition 7(b) and Condition 7(c) are outlined item 2-4 above.

Sandfire maintains an Environmental Management System aligned to ISO14001:2015 that directs the management of clearing related activities and the keeping of records.



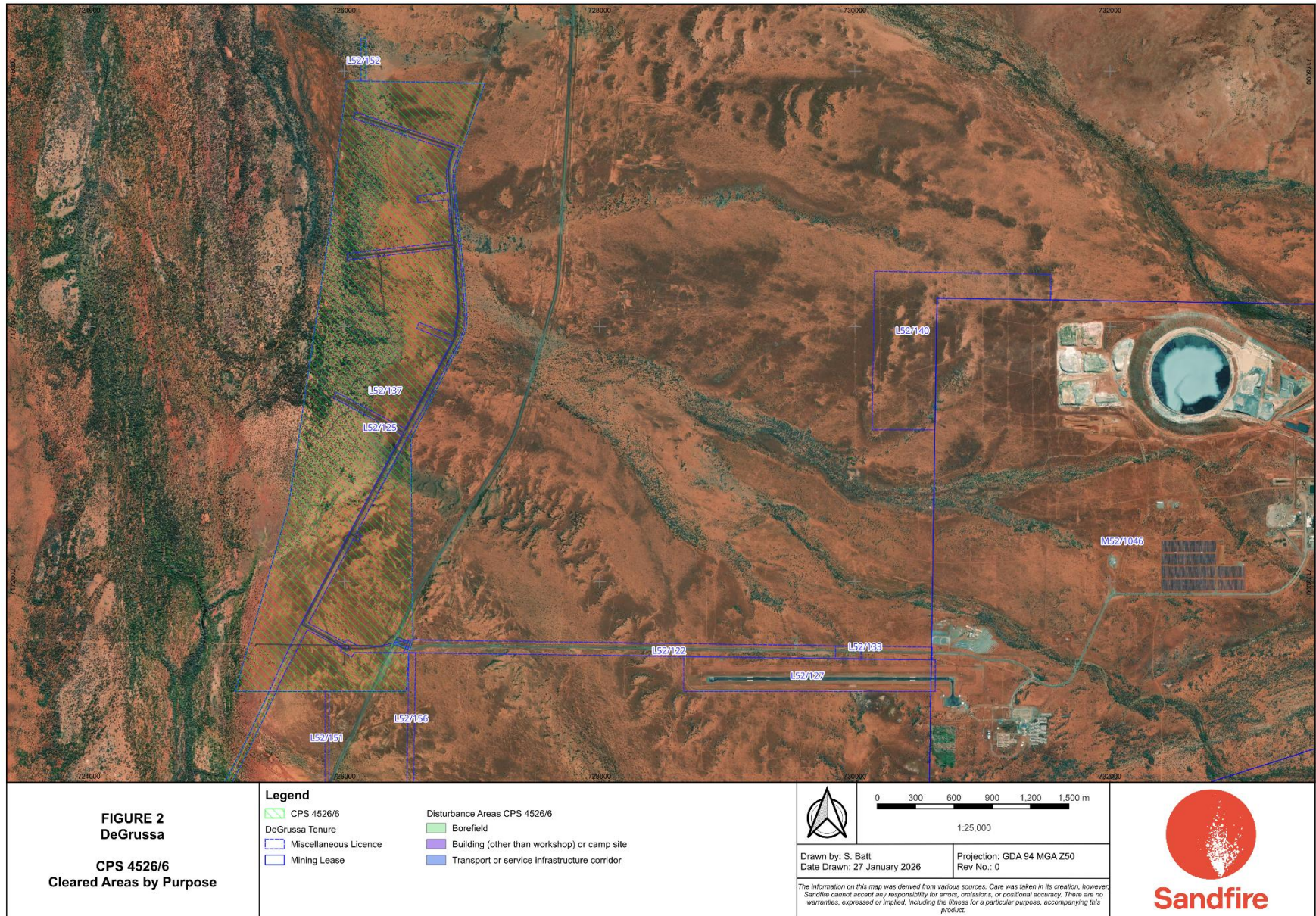


Table 2. Download of attribute data associated with the cleared areas geospatial data

Feature_Na	Activity_T	MRF_Descri	MRF_Cat	Tenement	NVCP	Yr_Cleared	Operation	Area_ha	Clo_Domain	Status	MP_Classif
Bore DWB005	Production bores	Borefield	C	L52/137	CPS 4526	2011	DeGrussa	0.058	Borefield	Disturbed	Miscellaneous Mine Activities
Bore DWB006	Production bores	Borefield	C	L52/137	CPS 4526	2011	DeGrussa	0.012	Borefield	Disturbed	Miscellaneous Mine Activities
Powerline-pipeline to DWB005	Powerline-pipeline	Transport or service infrastructure corridor	C	L52/137	CPS 4526	2011	DeGrussa	0.65	Infrastructure	Disturbed	Miscellaneous Mine Activities
Powerline-pipeline to DWB006	Powerline-pipeline	Transport or service infrastructure corridor	C	L52/137	CPS 4526	2011	DeGrussa	1.012	Infrastructure	Disturbed	Miscellaneous Mine Activities
Road to DMB10	Road/Track	Transport or service infrastructure corridor	C	L52/137	CPS 4526	2011	DeGrussa	0.02	Roads and Airstrip	Disturbed	Miscellaneous Mine Activities
Powerline-pipeline to DWB002	Powerline-pipeline	Transport or service infrastructure corridor	C	L52/137	CPS 4526	2011	DeGrussa	0.859	Infrastructure	Disturbed	Miscellaneous Mine Activities
Transfer pumping near DWB002	Infrastructure	Building (other than workshop) or camp site	C	L52/137	CPS 4526	2011	DeGrussa	0.138	Infrastructure	Disturbed	Miscellaneous Mine Activities
Bore DMB12/DMB12a	Monitoring bores	Borefield	C	L52/137	CPS 4526	2011	DeGrussa	0.004	Borefield	Disturbed	Miscellaneous Mine Activities
Bore DWB008	Production bores	Borefield	C	L52/137	CPS 4526	2011	DeGrussa	0.004	Borefield	Disturbed	Miscellaneous Mine Activities
Powerline-pipeline to DWB008	Powerline-pipeline	Transport or service infrastructure corridor	C	L52/137	CPS 4526	2011	DeGrussa	0.018	Infrastructure	Disturbed	Miscellaneous Mine Activities
Bore DMB08/DMB08a	Monitoring bores	Borefield	C	L52/137	CPS 4526	2011	DeGrussa	0.004	Borefield	Disturbed	Miscellaneous Mine Activities
Road to DWB002	Road/Track	Transport or service infrastructure corridor	C	L52/137	CPS 4526	2011	DeGrussa	1.506	Roads and Airstrip	Disturbed	Miscellaneous Mine Activities
Bore DWB002	Production bores	Borefield	C	L52/137	CPS 4526	2011	DeGrussa	0.008	Borefield	Disturbed	Miscellaneous Mine Activities
Powerline-pipeline to DWB002	Powerline-pipeline	Transport or service infrastructure corridor	C	L52/137	CPS 4526	2011	DeGrussa	0.181	Infrastructure	Disturbed	Miscellaneous Mine Activities
Bore DMB09/DMB09a	Monitoring bores	Borefield	C	L52/137	CPS 4526	2011	DeGrussa	0.008	Borefield	Disturbed	Miscellaneous Mine Activities
Road to DMB009	Road/Track	Transport or service infrastructure corridor	C	L52/137	CPS 4526	2011	DeGrussa	0.017	Roads and Airstrip	Disturbed	Miscellaneous Mine Activities
Bore DMB10/DMB10a	Monitoring bores	Borefield	C	L52/137	CPS 4526	2011	DeGrussa	0.016	Borefield	Disturbed	Miscellaneous Mine Activities
Powerline-pipeline to DWB007	Powerline-pipeline	Transport or service infrastructure corridor	C	L52/137	CPS 4526	2011	DeGrussa	0.536	Infrastructure	Disturbed	Miscellaneous Mine Activities
Road to DWB006	Road/Track	Transport or service infrastructure corridor	C	L52/137	CPS 4526	2011	DeGrussa	3.771	Roads and Airstrip	Disturbed	Miscellaneous Mine Activities
Bore DMB11/DMB11a	Monitoring bores	Borefield	C	L52/137	CPS 4526	2011	DeGrussa	0.011	Borefield	Disturbed	Miscellaneous Mine Activities
Road to DMB11/ DMB11a	Road/Track	Transport or service infrastructure corridor	C	L52/137	CPS 4526	2011	DeGrussa	0.024	Roads and Airstrip	Disturbed	Miscellaneous Mine Activities
Bore DWB007	Production bores	Borefield	C	L52/137	CPS 4526	2011	DeGrussa	0.028	Borefield	Disturbed	Miscellaneous Mine Activities
Bore DMB13/DMB13a	Monitoring bores	Borefield	C	L52/137	CPS 4526	2011	DeGrussa	0.009	Borefield	Disturbed	Miscellaneous Mine Activities
Bore DGWE 158_track	Road/Track	Transport or service infrastructure corridor	C	L52/137	CPS 4526	2011	DeGrussa	0.007	Roads and Airstrip	Disturbed	Miscellaneous Mine Activities
Bore DMB12_Rd	Road/Track	Transport or service infrastructure corridor	C	L52/137	CPS 4526	2011	DeGrussa	0.025	Roads and Airstrip	Disturbed	Miscellaneous Mine Activities
Bore DGWB 03b	Monitoring bores	Borefield	C	L52/137	CPS 4526	2011	DeGrussa	0.002	Borefield	Disturbed	Miscellaneous Mine Activities
Bore DGWE157	Monitoring bores	Borefield	C	L52/137	CPS 4526	2011	DeGrussa	0.003	Borefield	Disturbed	Miscellaneous Mine Activities
Bore DGWE 158	Monitoring bores	Borefield	C	L52/137	CPS 4526	2011	DeGrussa	0.003	Borefield	Disturbed	Miscellaneous Mine Activities
Bore DGWE157_track	Road/Track	Transport or service infrastructure corridor	C	L52/137	CPS 4526	2011	DeGrussa	0.006	Roads and Airstrip	Disturbed	Miscellaneous Mine Activities
Bore DMB 105	Monitoring bores	Borefield	C	L52/137	CPS 4526	2011	DeGrussa	0.002	Borefield	Disturbed	Miscellaneous Mine Activities
Bore DMB04	Monitoring bores	Borefield	C	L52/137	CPS 4526	2011	DeGrussa	0.007	Borefield	Disturbed	Miscellaneous Mine Activities
Bore DMB04_track	Road/Track	Transport or service infrastructure corridor	C	L52/137	CPS 4526	2011	DeGrussa	0.044	Roads and Airstrip	Disturbed	Miscellaneous Mine Activities
Bore DGWE 159	Monitoring bores	Borefield	C	L52/137	CPS 4526	2011	DeGrussa	0.005	Borefield	Disturbed	Miscellaneous Mine Activities
Bore DGWE 159_track	Road/Track	Transport or service infrastructure corridor	C	L52/137	CPS 4526	2011	DeGrussa	0.239	Roads and Airstrip	Disturbed	Miscellaneous Mine Activities
Bore DGWE 159	Monitoring bores	Borefield	C	L52/152	CPS 4526	2011	DeGrussa	0.009	Borefield	Disturbed	Miscellaneous Mine Activities
DeGrussa Access Rd (L52/137)	Sealed Road	Transport or service infrastructure corridor	C	L52/137	CPS 4526	2011	DeGrussa	0.311	Infrastructure	Disturbed	Miscellaneous Mine Activities
Bore DMB13_Rd	Road/Track	Transport or service infrastructure corridor	C	L52/137	CPS 4526	2011	DeGrussa	0.264	Roads and Airstrip	Disturbed	Miscellaneous Mine Activities
Road to DGWE 159	Road/Track	Transport or service infrastructure corridor	C	L52/152	CPS 4526	2011	DeGrussa	0.008	Roads and Airstrip	Disturbed	Miscellaneous Mine Activities
Track to DGWE160 / OBS09	Road/Track	Transport or service infrastructure corridor	C	L52/137	CPS 4526	2011	DeGrussa	0.282	Roads and Airstrip	Disturbed	Miscellaneous Mine Activities

Feature_Na	Activity_T	MRF_Descri	MRF_Cat	Tenement	NVCP	Yr_Cleared	Operation	Area_ha	Clo_Domain	Status	MP_Classif
Monitroing Bore DWGE 160 / OBS 09	Monitoring bores	Borefield	C	L52/137	CPS 4526	2011	DeGrussa	0.003	Borefield	Disturbed	Miscellaneous Mine Activities
Track to DWGE 161 / OBS08	Road/Track	Transport or service infrastructure corridor	C	L52/137	CPS 4526	2011	DeGrussa	0.008	Borefield	Disturbed	Miscellaneous Mine Activities
Monitoring bore DWGE 161 / OBS 08	Monitoring bores	Borefield	C	L52/137	CPS 4526	2011	DeGrussa	0.004	Borefield	Disturbed	Miscellaneous Mine Activities
Track to Bore	Road/Track	Transport or service infrastructure corridor	C	L52/125	CPS 4526	2011	DeGrussa	0.009	Roads and Airstrip	Disturbed	Miscellaneous Mine Activities
Borefield	Monitoring bores	Borefield	C	L52/125	CPS 4526	2011	DeGrussa	0.008	Borefield	Disturbed	Miscellaneous Mine Activities
Powerline-pipeline near Main Road	Powerline-pipeline	Transport or service infrastructure corridor	C	L52/137	CPS 4526	2011	DeGrussa	0.264	Infrastructure	Disturbed	Miscellaneous Mine Activities