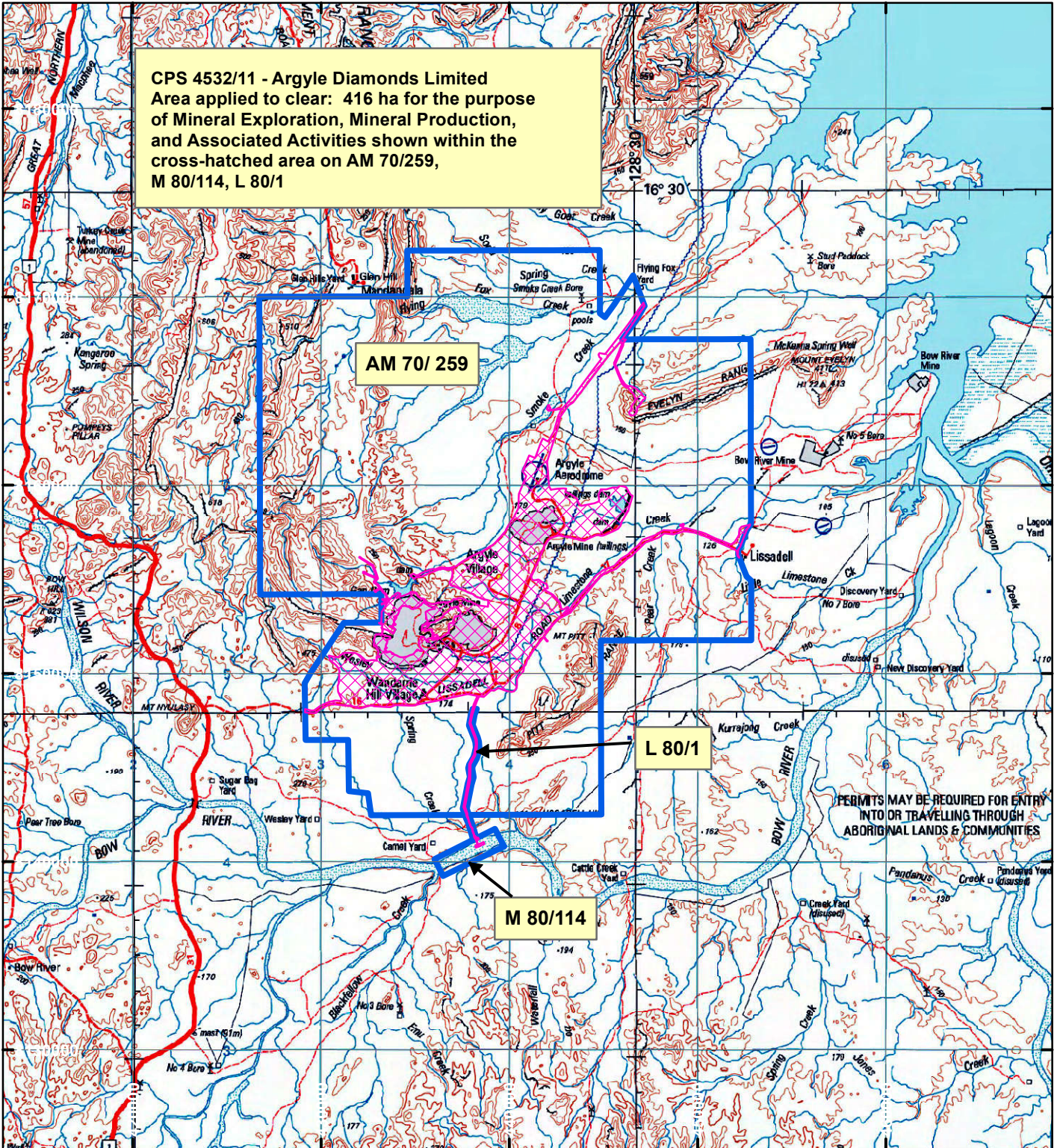


CPS 4532/11 - Argyle Diamonds Limited

CPS 4532/11 - Argyle Diamonds Limited
 Area applied to clear: 416 ha for the purpose
 of Mineral Exploration, Mineral Production,
 and Associated Activities shown within the
 cross-hatched area on AM 70/259,
 M 80/114, L 80/1



PERMITS MAY BE REQUIRED FOR ENTRY
 INTO OR TRAVELLING THROUGH
 ABORIGINAL LANDS & COMMUNITIES

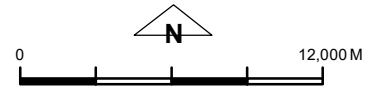
LEGEND



Clearing Instruments



Mining Tenements



Scale 1:300,000

(Approximate when reproduced at A4)

Geocentric Datum Australia 1994

Note: the data in this map have not been
 projected. This may result in geometric
 distortion or measurement inaccuracies.

..... Date

Officer with delegated authority under Section 20 of
 the Environmental Protection Act 1986

Information derived from this map should be
 confirmed with the data custodian acknowledged
 by the agency acronym in the legend.



WA Crown Copyright 2002