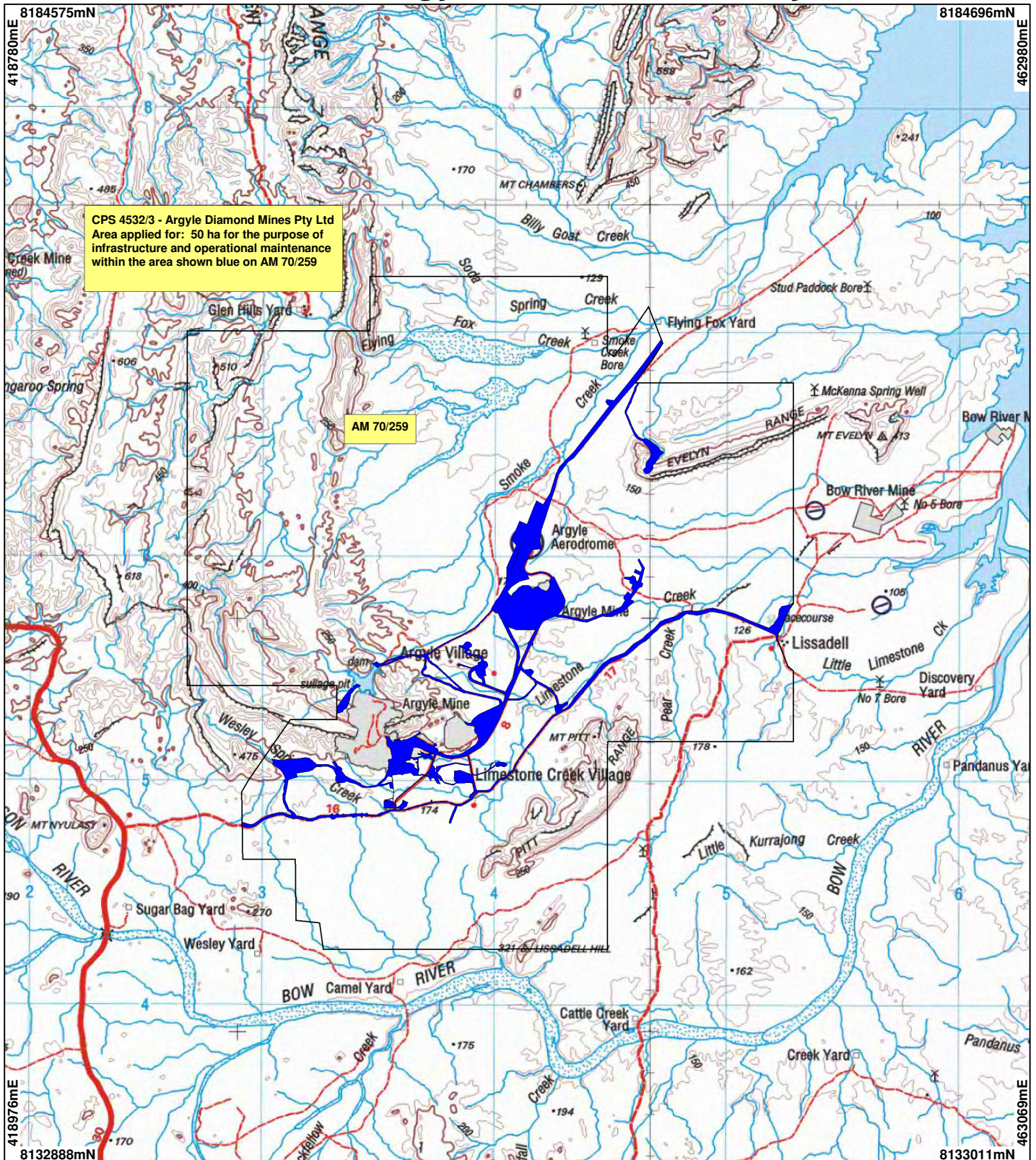


CPS 4532/3 - Argyle Diamond Mines Pty Ltd



CPS 4532/3 - Argyle Diamond Mines Pty Ltd
 Area applied for: 50 ha for the purpose of
 infrastructure and operational maintenance
 within the area shown blue on AM 70/259

AM 70/259

LEGEND

- Mining Tenements
- Clearing Instruments
- Areas Applied to Clear
- NATMAP 250K Series Mapping
 - GA 08/03



Scale 1:240000
 (Approximate when reproduced at A4)

Geocentric Datum Australia 1994

Note: the data in this map have not been projected. This may result in geometric distortion or measurement inaccuracies.

..... Date

Officer with delegated authority under Section 20 of
 the Environmental Protection Act 1986

Information derived from this map should be
 confirmed with the data custodian acknowledged
 by the agency acronym in the legend.



WA Crown Copyright 2002

* Project Data. This data has not been quality assured. Please contact map author for details.