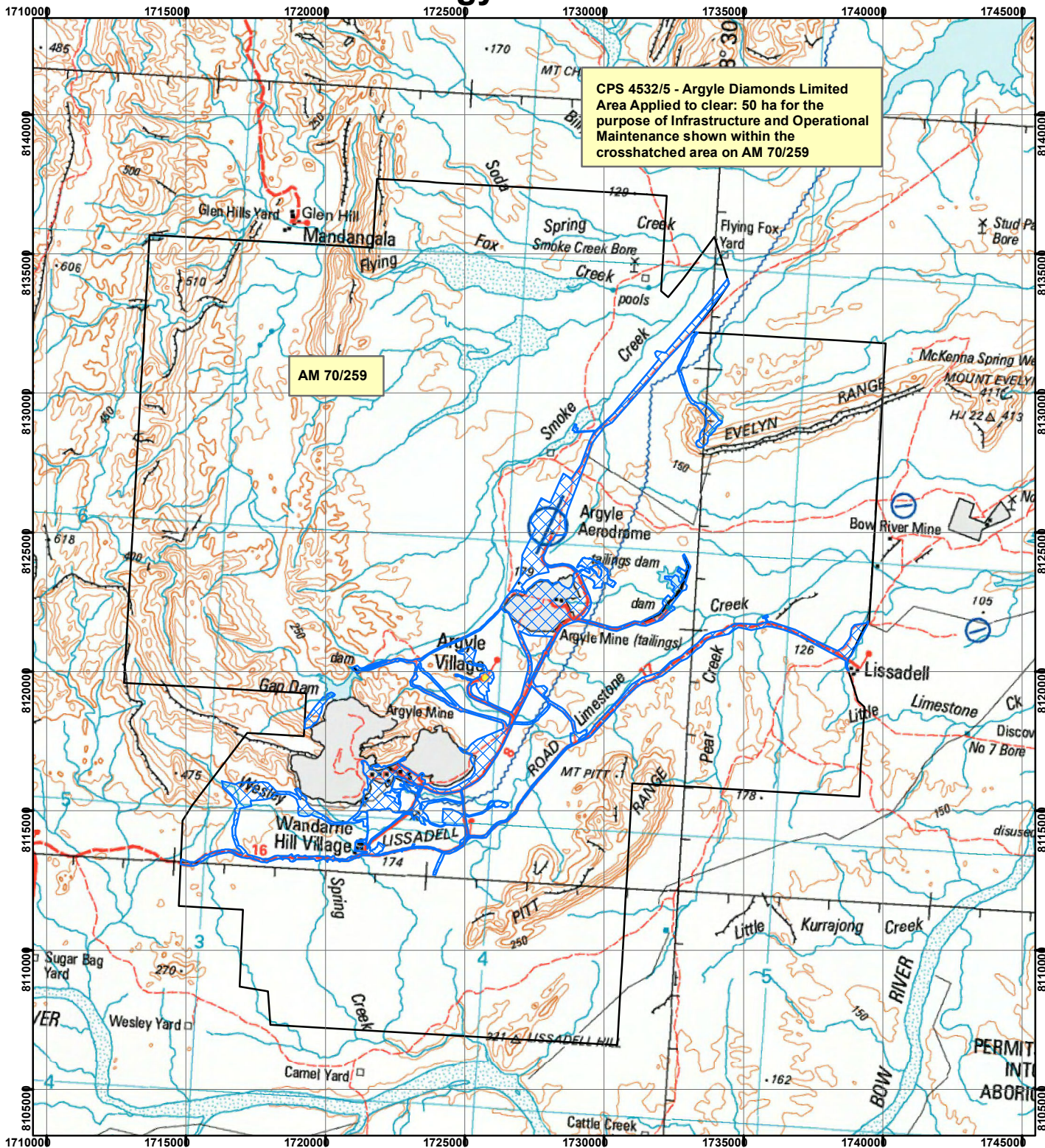

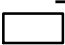


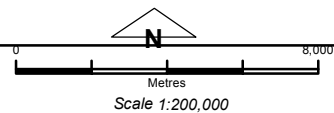
# CPS 4532/5 - Argyle Diamonds Limited



CPS 4532/5 - Argyle Diamonds Limited  
 Area Applied to clear: 50 ha for the purpose of Infrastructure and Operational Maintenance shown within the crosshatched area on AM 70/259

AM 70/259

- Legend**
-  Clearing Instruments
  - Mining Tenements**
  - FMT\_TENID**
  -  M 259SA



Geocentric Datum Australia 1994  
 Note: the data in this map have not been projected. This may result in geometric distortion or measurement inaccuracies.

..... Date .....

Officer with delegated authority under Section 20 of the Environmental Protection Act 1986

Information derived from this map should be confirmed with the data custodian acknowledged by the agency acronym in the legend.

