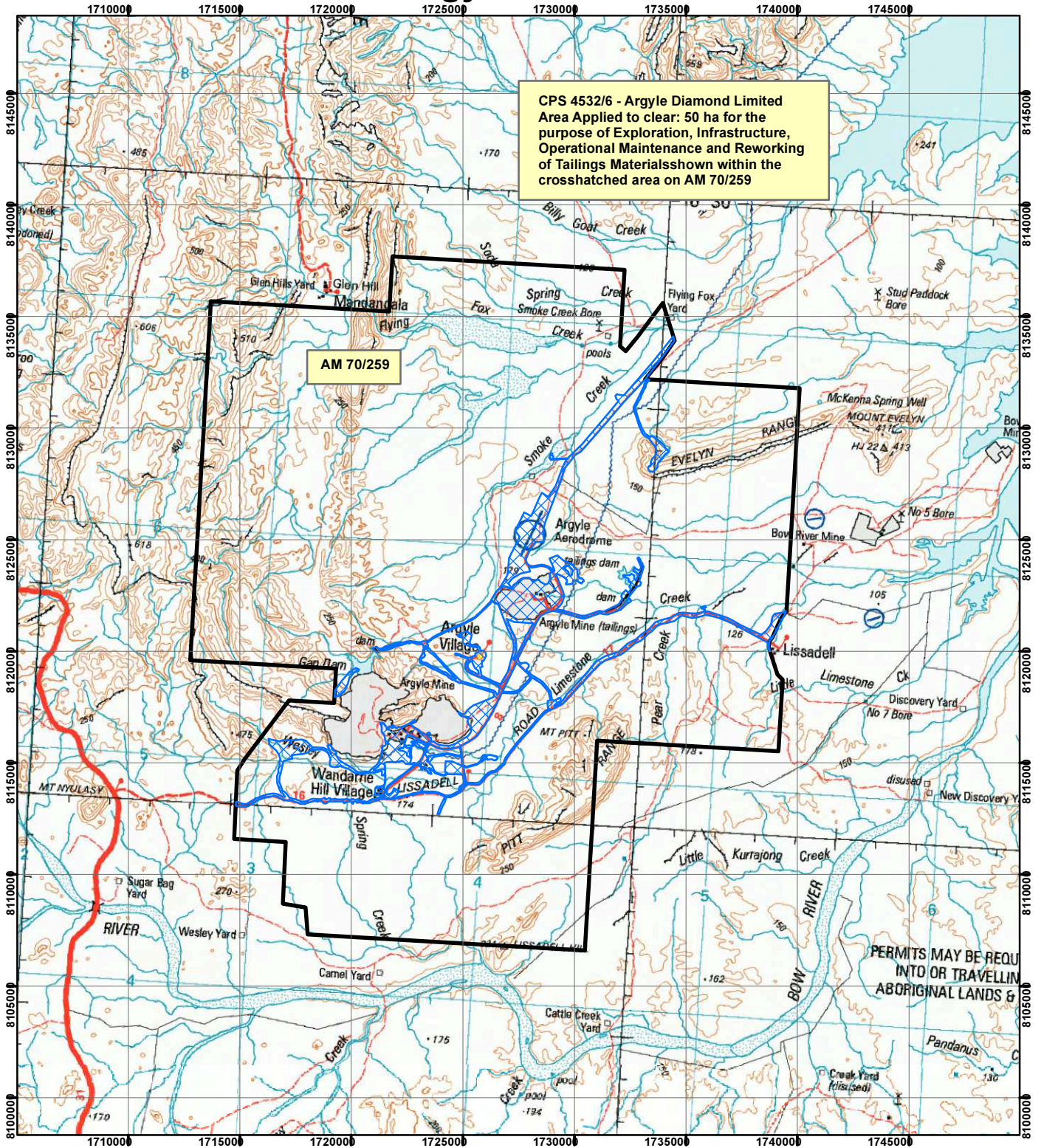



CPS 4532/6 - Argyle Diamond Limited



CPS 4532/6 - Argyle Diamond Limited
 Area Applied to clear: 50 ha for the
 purpose of Exploration, Infrastructure,
 Operational Maintenance and Reworking
 of Tailings Materials shown within the
 crosshatched area on AM 70/259

AM 70/259

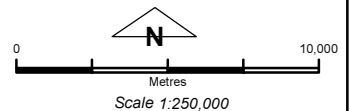
Legend

 Clearing Instruments

Mining Tenements

FMT_TENID

 M 259SA



Geocentric Datum Australia 1994

Note: the data in this map have not been projected. This may result in geometric distortion or measurement inaccuracies.

..... Date

Officer with delegated authority under Section 20 of
 the Environmental Protection Act 1986

Information derived from this map should be
 confirmed with the data custodian acknowledged
 by the agency acronym in the legend.

