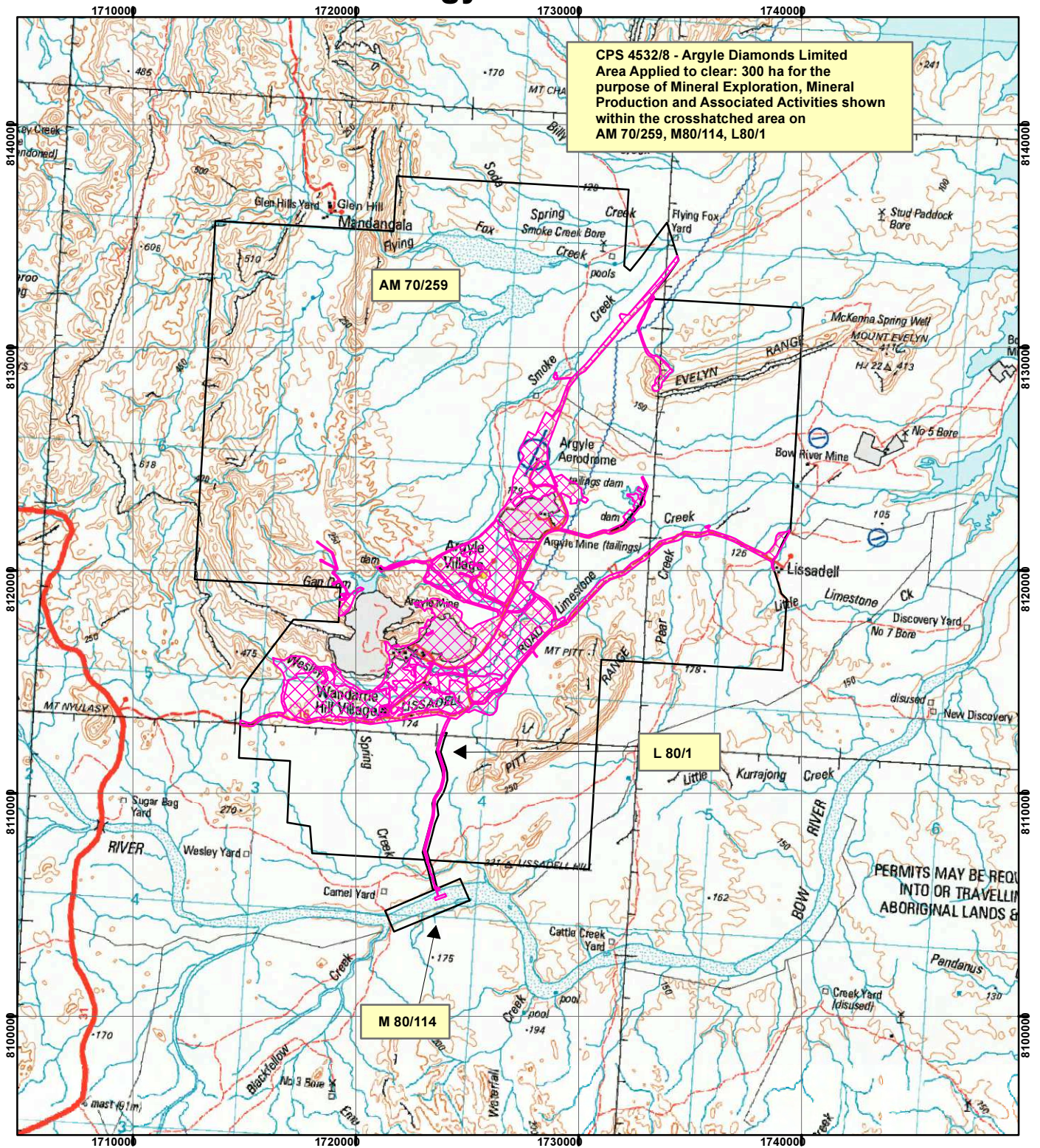


# CPS 4532/8 - Argyle Diamonds Limited



CPS 4532/8 - Argyle Diamonds Limited  
 Area Applied to clear: 300 ha for the  
 purpose of Mineral Exploration, Mineral  
 Production and Associated Activities shown  
 within the crosshatched area on  
 AM 70/259, M80/114, L80/1

## Legend

 Clearing Instruments

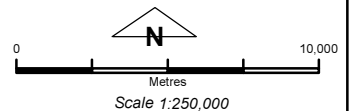
## Mining Tenements

### FMT\_TENID

 L 80/1

 M 259SA

 M 80/114



Geocentric Datum Australia 1994

Note: the data in this map have not been projected. This may result in geometric distortion or measurement inaccuracies.

..... Date .....

Officer with delegated authority under Section 20 of the Environmental Protection Act 1986

Information derived from this map should be confirmed with the data custodian acknowledged by the agency acronym in the legend.

