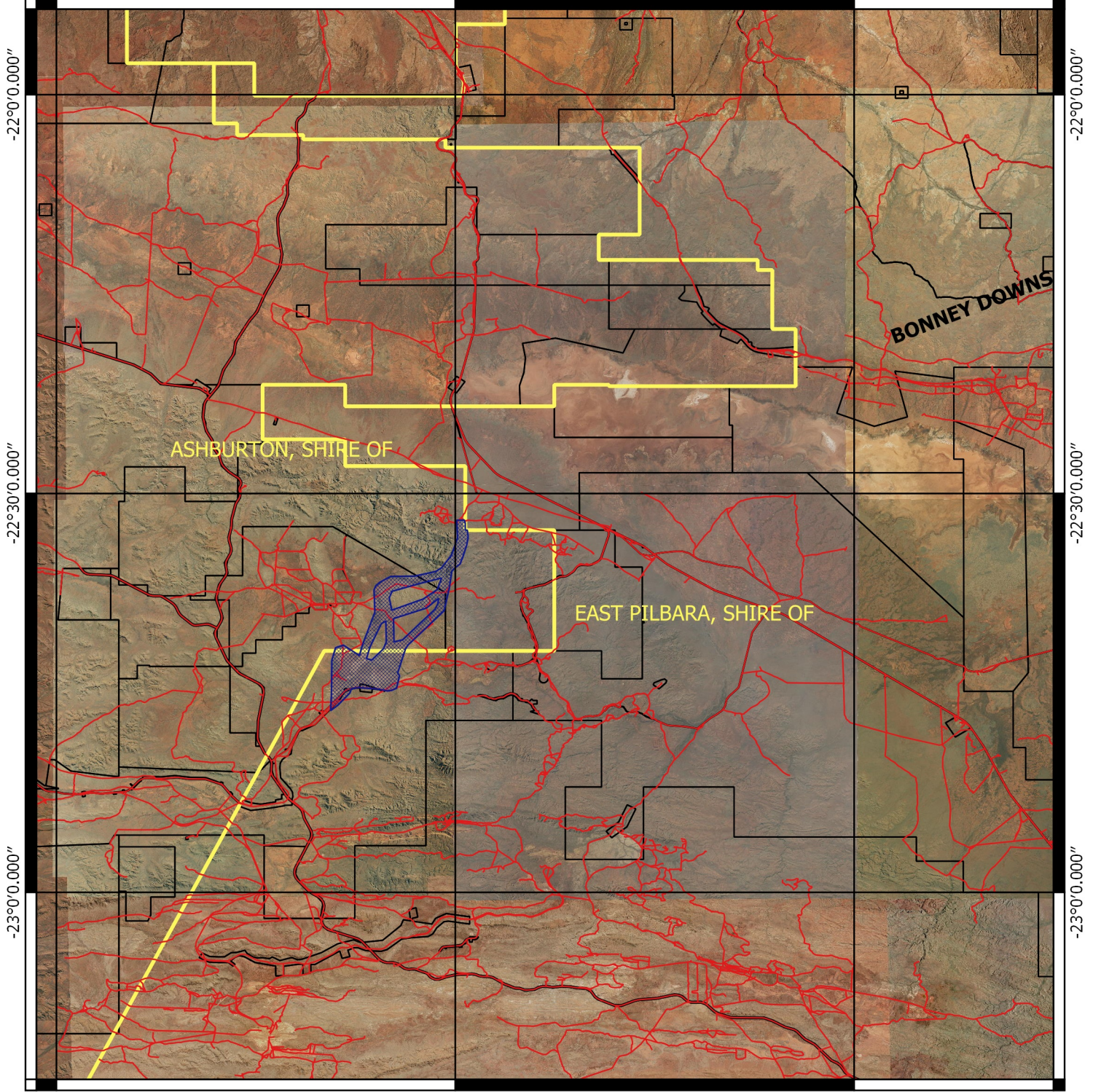


CPS 4614/3 - Context Map

118°30'0.000"

119°0'0.000"

119°30'0.000"



118°30'0.000"

119°0'0.000"

119°30'0.000"

Legend

- Clearing Instruments Proposal
- Roads
- LGA
- Cadastre

Virtual Mosaic (LGATE-V001)

1:575,000
MGA 94
Geocentric Datum of Australia 1994

.....Date.....

Officer with delegated authority under Section 20
of the Environmental Protection Act 1986

GOVERNMENT OF
WESTERN AUSTRALIA