

CPS 4614/3 - Map

118°48'0.000"

118°54'0.000"

119°0'0.000"

119°6'0.000"

-22°30'0.000"

-22°30'0.000"

-22°36'0.000"

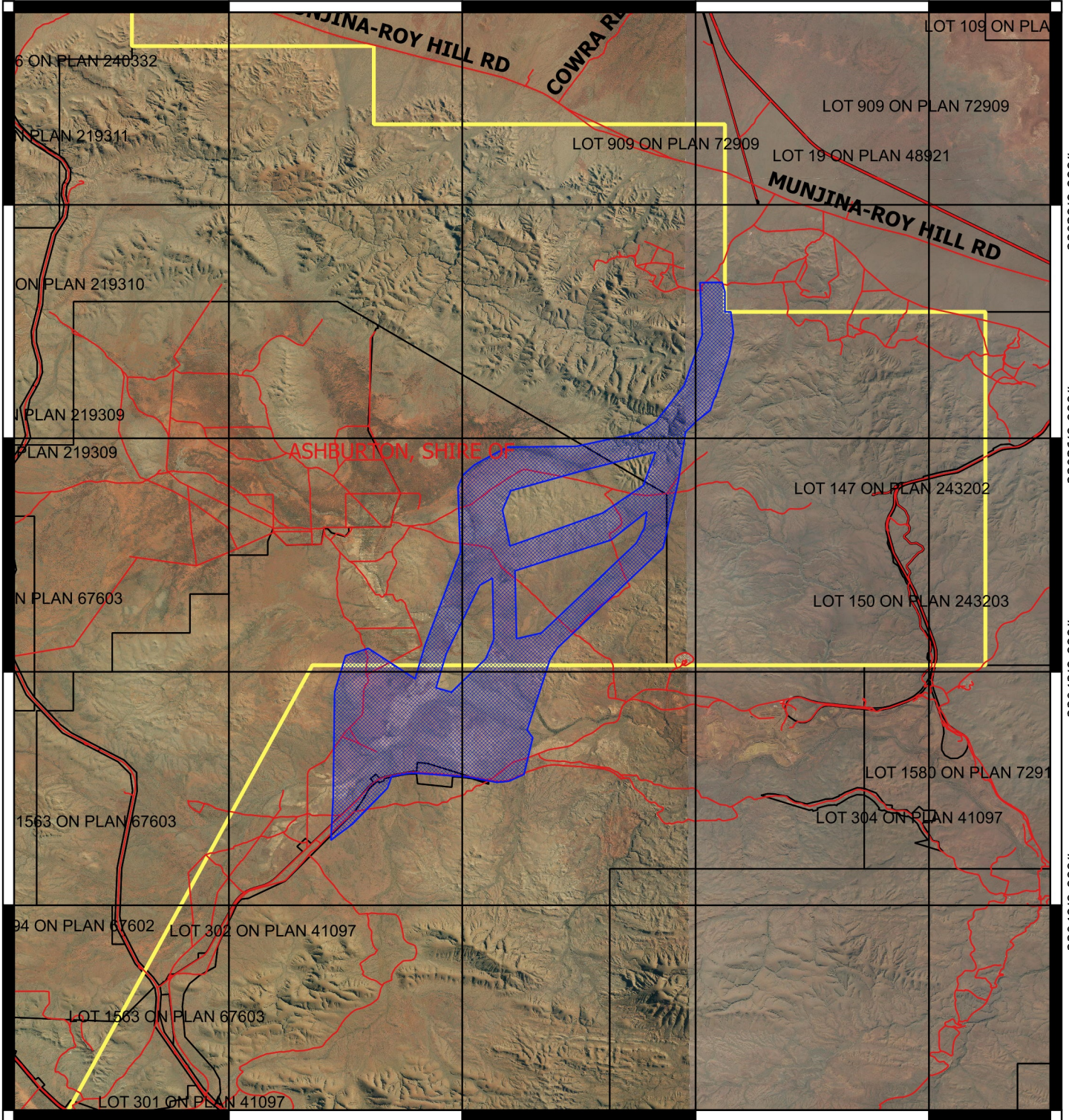
-22°36'0.000"

-22°42'0.000"

-22°42'0.000"

-22°48'0.000"

-22°48'0.000"



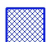
118°48'0.000"

118°54'0.000"

119°0'0.000"

119°6'0.000"

Legend

 Clearing Instruments Proposal

 Roads

 LGA

 Cadastre

Virtual Mosaic (LGATE-V001)



1:200,000

MGA 94

Geocentric Datum of Australia 1994

.....Date.....
Emma Bramwell

Officer with delegated authority under Section 20
of the Environmental Protection Act 1986



GOVERNMENT OF
WESTERN AUSTRALIA