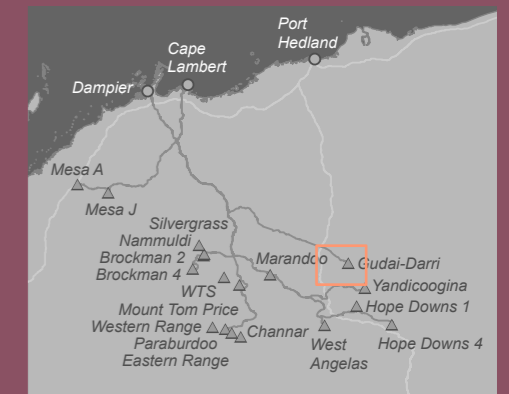


Legend

- Clearing Permit Area
- Rio Tinto Live Mining Act Tenure
- ⚠ Rio Tinto Mine
- ▲ Rio Tinto Camp
- ✈ Airfield
- Rio Tinto Railway
- Highway
- Major Road
- Minor Road
- Site Access Road

Drawn: M.Ludovico
 Plan: RTIO-1157300v1
 Date: May 2026

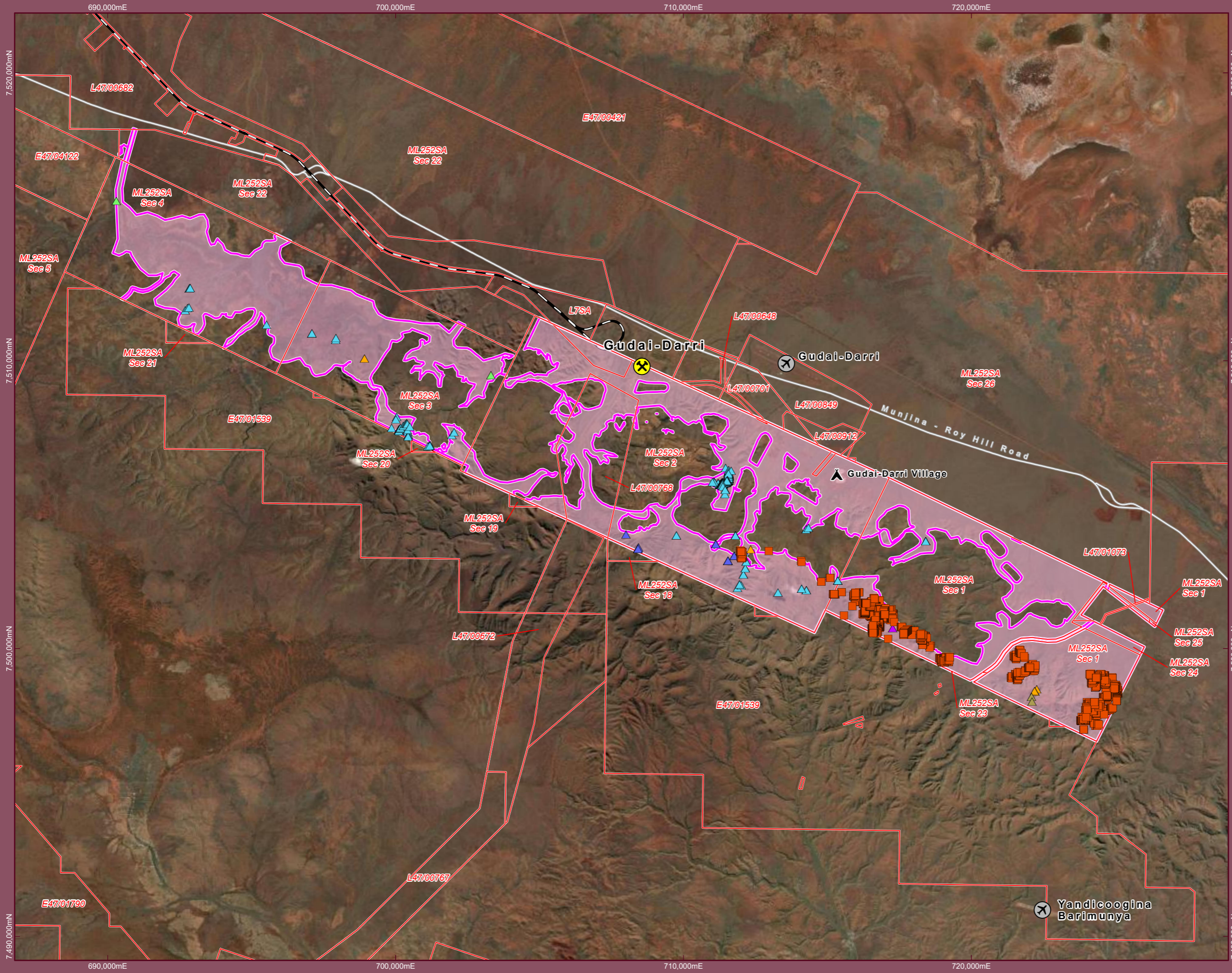
Checked by: L.Fuentes
 Proj: GDA 1994 MGA Zone 50
 GIS.Team@riotinto.com



Disclaimer: Copyright in this document is owned by or is licensed to the relevant Rio Tinto Group member(s) and may contain confidential information of the relevant Rio Tinto Group member(s). This document has been prepared to the appropriate level of accuracy as required for its purposes. Reproduction, distribution or disclosure of this document in whole or in part by any means is strictly prohibited without the express written approval of the relevant Rio Tinto Group member(s). Any unauthorised use or disclosure of this document may result in loss or damage to the relevant Rio Tinto Group member(s). Further this document may not be referred to, quoted or relied upon for any purpose whatsoever without the written approval of the relevant Rio Tinto Group member(s). To the maximum extent permitted by law, the relevant Rio Tinto Group member(s): (a) will not be liable to a third party for any loss, damage, liability or claim arising out of or incidental to a third party using or relying on the content contained in this document, whether such use was authorised or not; and (b) disclaims all risk, representations and warranties (express or implied), and the third party assumes all risk and releases and indemnifies and agrees to keep indemnified the relevant Rio Tinto Group member(s) from any loss, damage, claim or liability arising directly or indirectly from the use or reliance on this document. © RioTinto, Earthstar Geographics

Figure 1. Clearing Permit Area



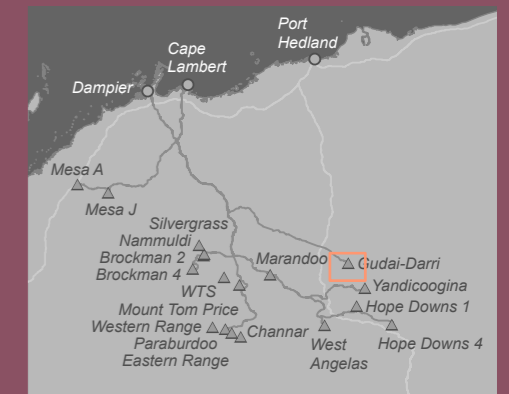


Legend

- Threatened Flora
- Priority Flora**
 - P3, *Eremophila naaykensis*
 - P3, *Rostellularia adscendens* var. *latifolia*
 - P3, *Solanum* ? sp. Red Hill (S. van Leeuwen et al. PBS 5415)
 - P4, *Acacia bromilowiana*
 - P4, *Eremophila magnifica* subsp. *magnifica*
 - P4, *Rhynchosia bungarensis*
- Clearing Permit Area
- Rio Tinto Live Mining Act Tenure
- Rio Tinto Mine
- Rio Tinto Camp
- Airfield
- Rio Tinto Railway
- Minor Road

Drawn: M.Ludovico
 Plan: RTIO-1157300v1
 Date: May 2026

Checked by: L.Fuentes
 Proj: GDA 1994 MGA Zone 50
 GIS.Team@riotinto.com



Disclaimer: Copyright in this document is owned by or is licensed to the relevant Rio Tinto Group member(s) and may contain confidential information of the relevant Rio Tinto Group member(s). This document has been prepared to the appropriate level of accuracy as required for its purposes. Reproduction, distribution or disclosure of this document in whole or in part by any means is strictly prohibited without the express written approval of the relevant Rio Tinto Group member(s). Any unauthorised use or disclosure of this document may result in loss or damage to the relevant Rio Tinto Group member(s). Further this document may not be referred to, quoted or relied upon for any purpose whatsoever without the written approval of the relevant Rio Tinto Group member(s). To the maximum extent permitted by law, the relevant Rio Tinto Group member(s), (a) will not be liable to a third party for any loss, damage, liability or claim arising out of or incidental to a third party using or relying on the content contained in this document, whether such use was authorised or not; and (b) disclaims all risk, representations and warranties (express or implied), and the third party assumes all risk and releases and indemnifies and agrees to keep indemnified the relevant Rio Tinto Group member(s) from any loss, damage, claim or liability arising directly or indirectly from the use or reliance on this document. © RioTinto, Earthstar Geographics

Figure 3. Threatened and Priority Flora

