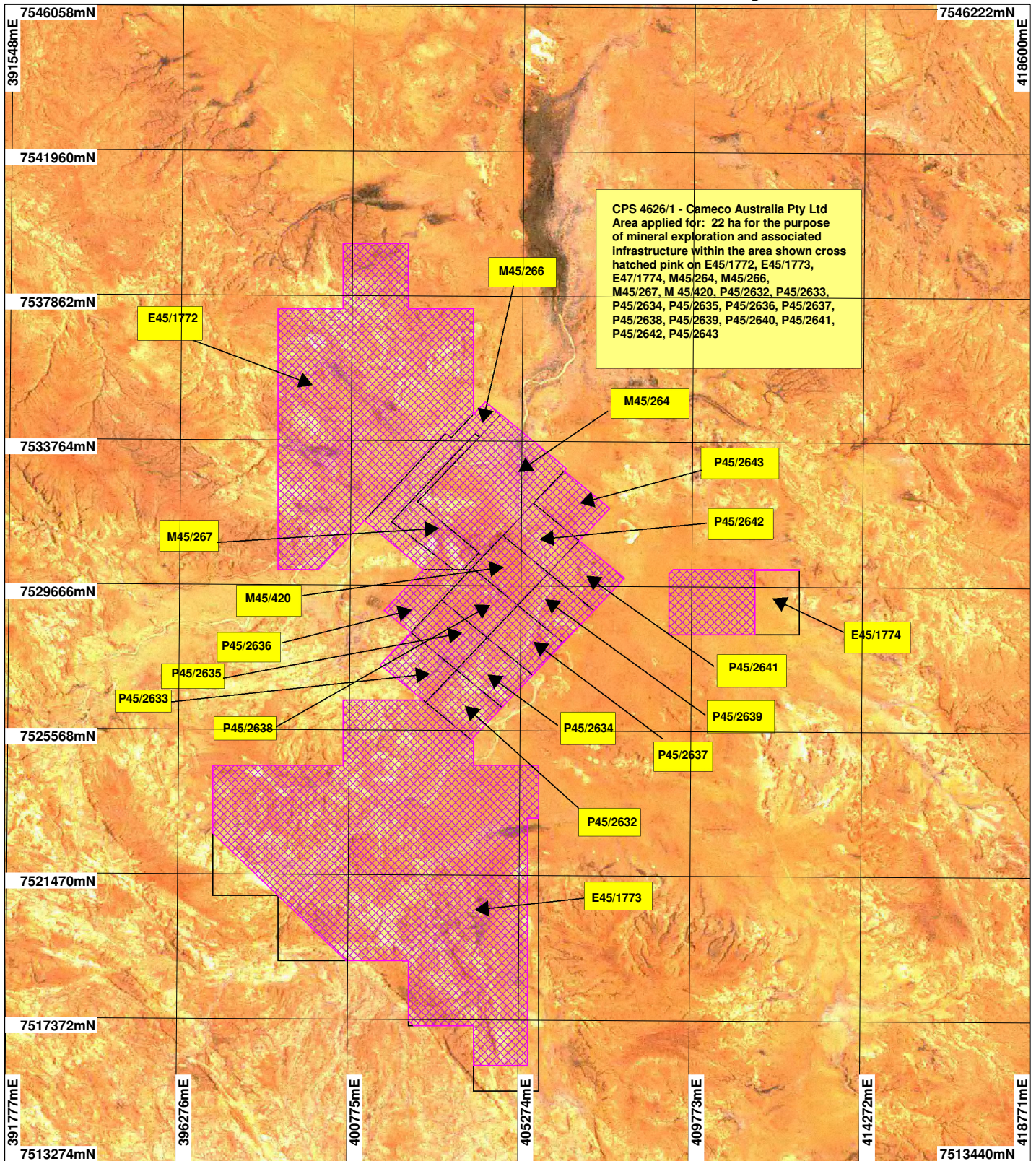


CPS 4626/1 - Cameco Australia Pty Ltd



CPS 4626/1 - Cameco Australia Pty Ltd
 Area applied for: 22 ha for the purpose
 of mineral exploration and associated
 infrastructure within the area shown cross
 hatched pink on E45/1772, E45/1773,
 E47/1774, M45/264, M45/266,
 M45/267, M 45/420, P45/2632, P45/2633,
 P45/2634, P45/2635, P45/2636, P45/2637,
 P45/2638, P45/2639, P45/2640, P45/2641,
 P45/2642, P45/2643

LEGEND

-  Mining Tenements
 -  Clearing Instruments
- Western Australia ETM 25m
 543 - AGO 2004



Scale 1:150000

(Approximate when reproduced at A4)

Geocentric Datum Australia 1994

Note: the data in this map have not been projected. This may result in geometric distortion or measurement inaccuracies.

..... Date

Officer with delegated authority under Section 20 of
 the Environmental Protection Act 1986

Information derived from this map should be
 confirmed with the data custodian acknowledged
 by the agency acronym in the legend.



WA Crown Copyright 2002

* Project Data. This data has not been quality assured. Please contact map author for details.