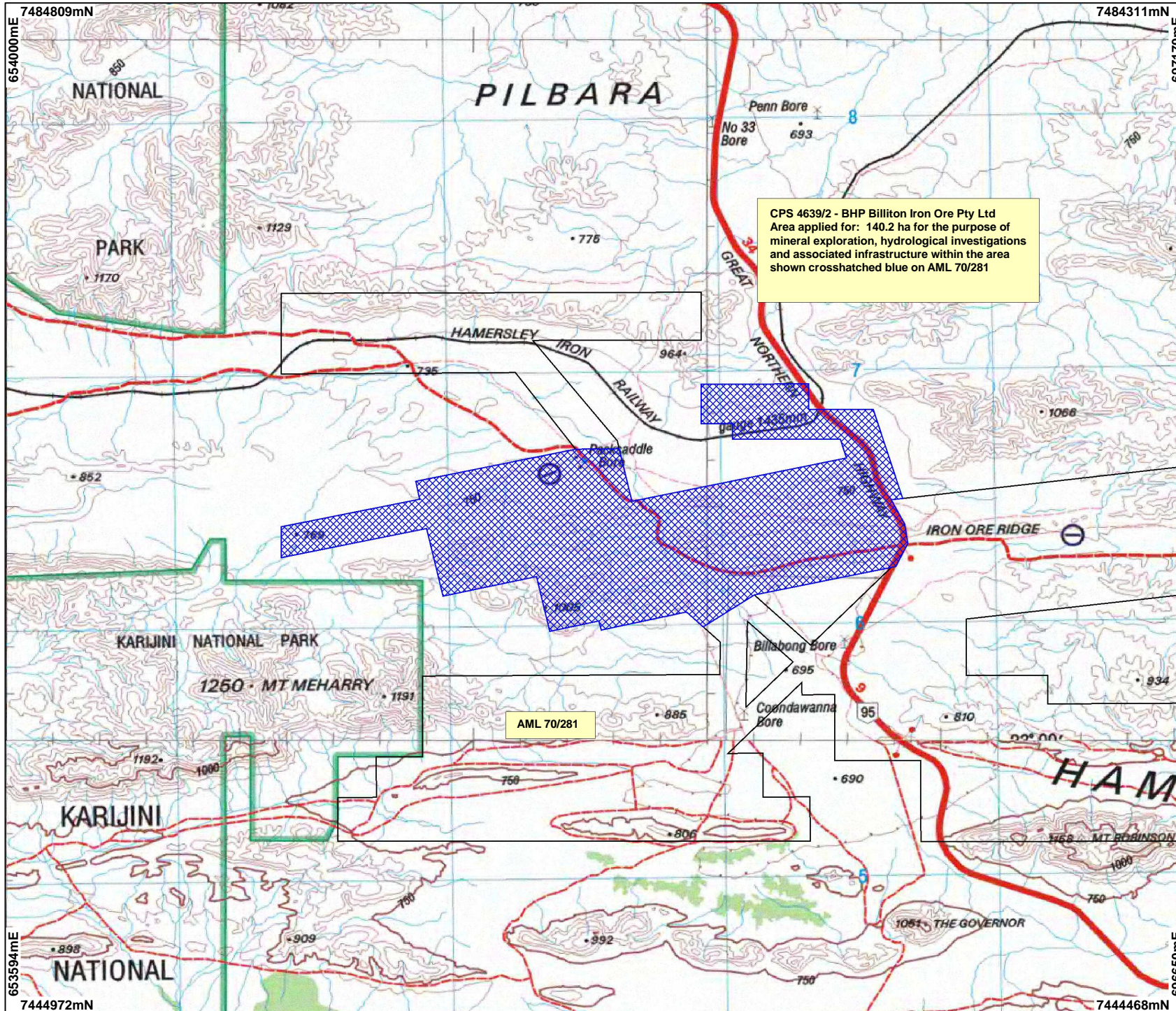




CPS 4639/2 - BHP Billiton Iron Ore Pty Ltd

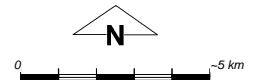


CPS 4639/2 - BHP Billiton Iron Ore Pty Ltd
 Area applied for: 140.2 ha for the purpose of
 mineral exploration, hydrological investigations
 and associated infrastructure within the area
 shown crosshatched blue on AML 70/281

AML 70/281

LEGEND

-  Mining Tenements
-  Clearing Instruments
- NATMAP 250K Series Mapping - GA 08/03



Scale 1:200000
 (Approximate when reproduced at A4)

Geocentric Datum Australia 1994

Note: the data in this map have not been projected. This may result in geometric distortion or measurement inaccuracies.

..... Date

Officer with delegated authority under Section 20 of the Environmental Protection Act 1986

Information derived from this map should be confirmed with the data custodian acknowledged by the agency acronym in the legend.



WESTERN AUSTRALIA
 WA Crown Copyright 2002