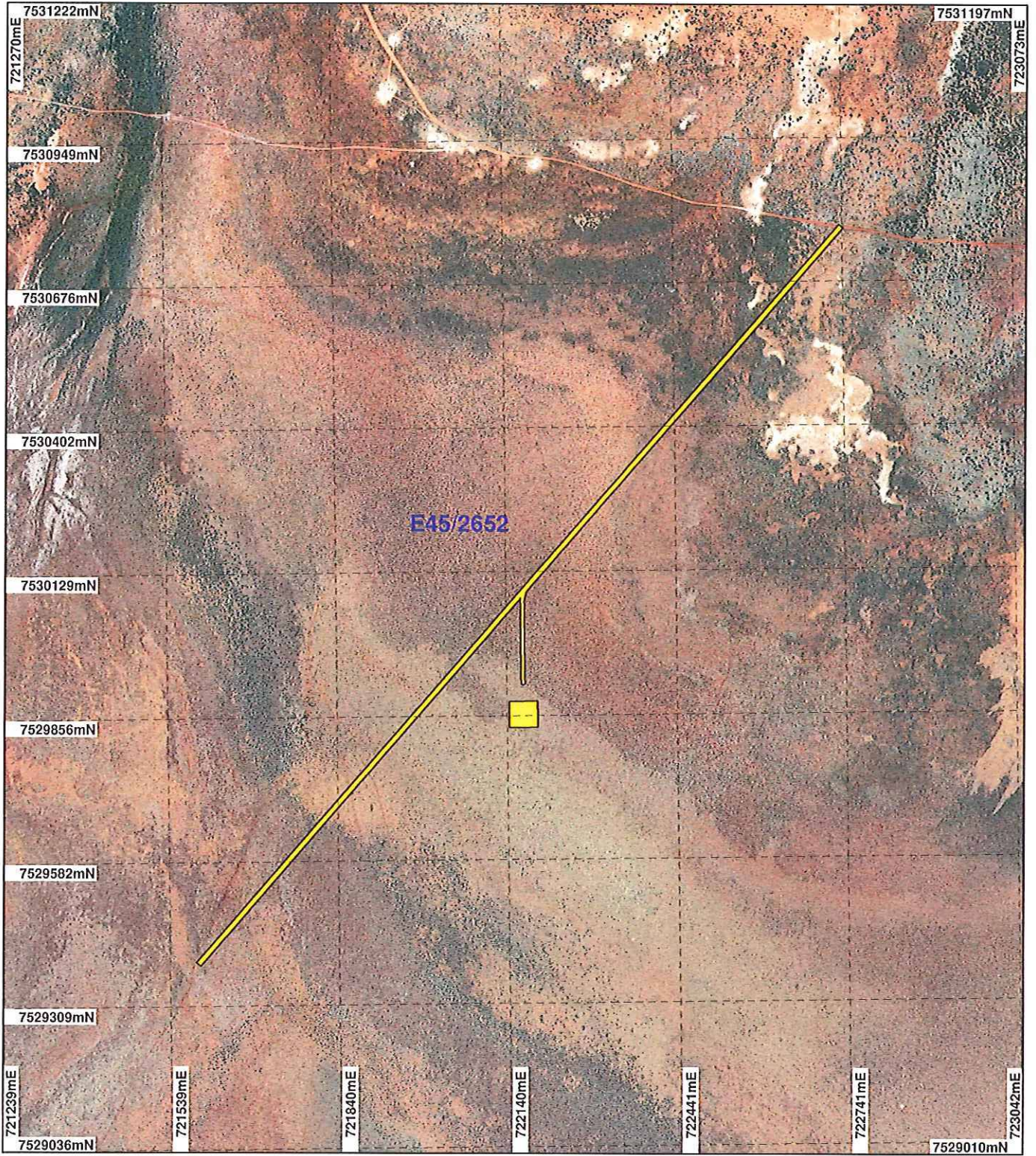
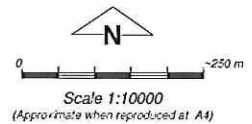


PLAN 4674/1A



LEGEND

- Clearing Instruments
- Areas Approved to Clear
- Mining Tenements
- Mount Marsh 50cm Orthomosaic - Landgate 2008



Geocentric Datum Australia 1994

Note: the data in this map have not been projected. This may result in geometric distortion or measurement inaccuracies.

PHIL GOREY

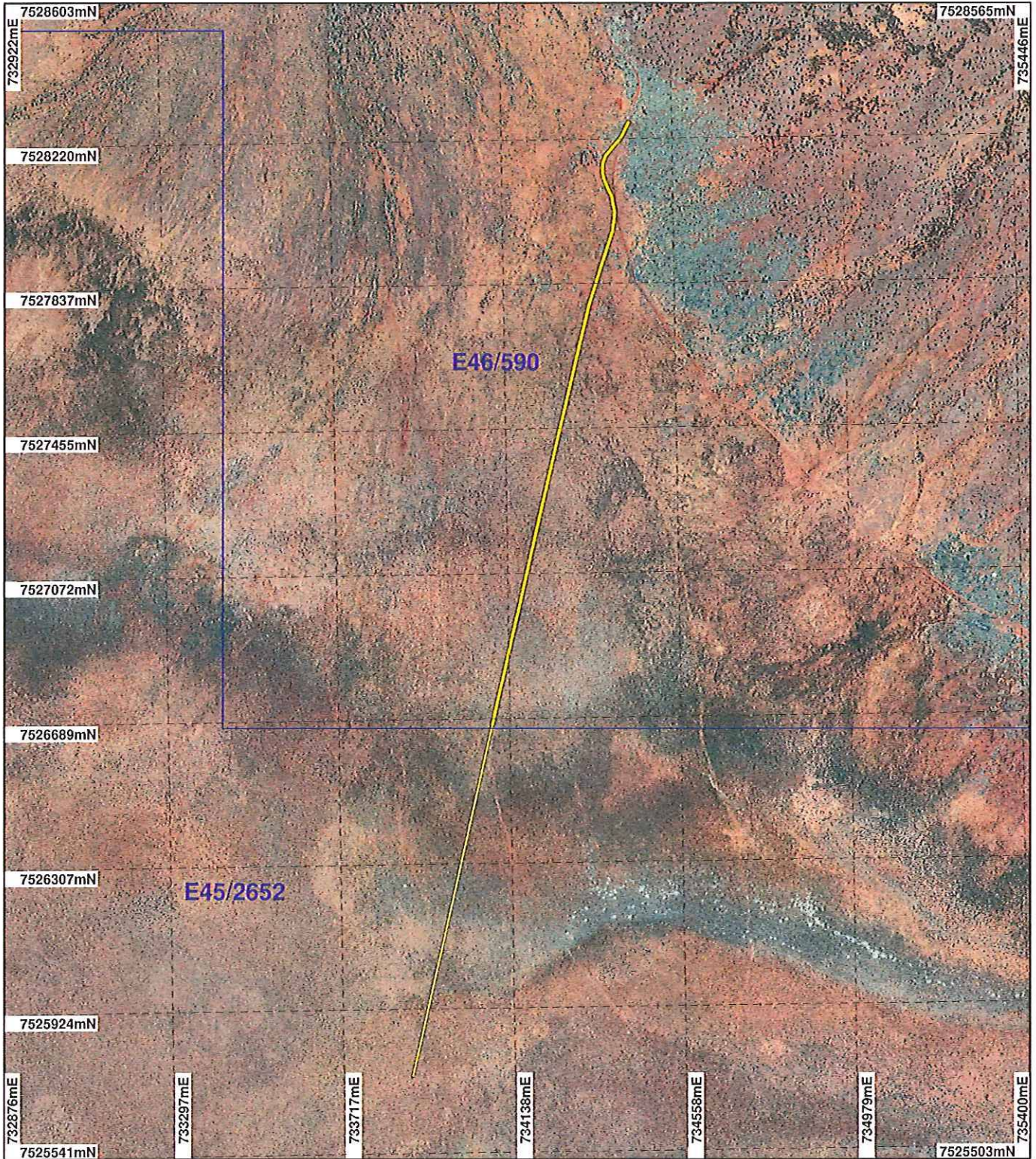
Date 10/1/2012

Officer with delegated authority under Section 20 of the Environmental Protection Act 1986

Information derived from this map should be confirmed with the data custodian acknowledged by the agency acronym in the legend.

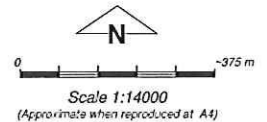


PLAN 4674/1B



LEGEND

- Clearing Instruments**
- Areas Approved to Clear
 - Mining Tenements
- Mount Marsh 50cm
Orthomosaic - Landgate
2008



Geocentric Datum Australia 1994
Note: the data in this map have not been projected. This may result in geometric distortion or measurement inaccuracies.

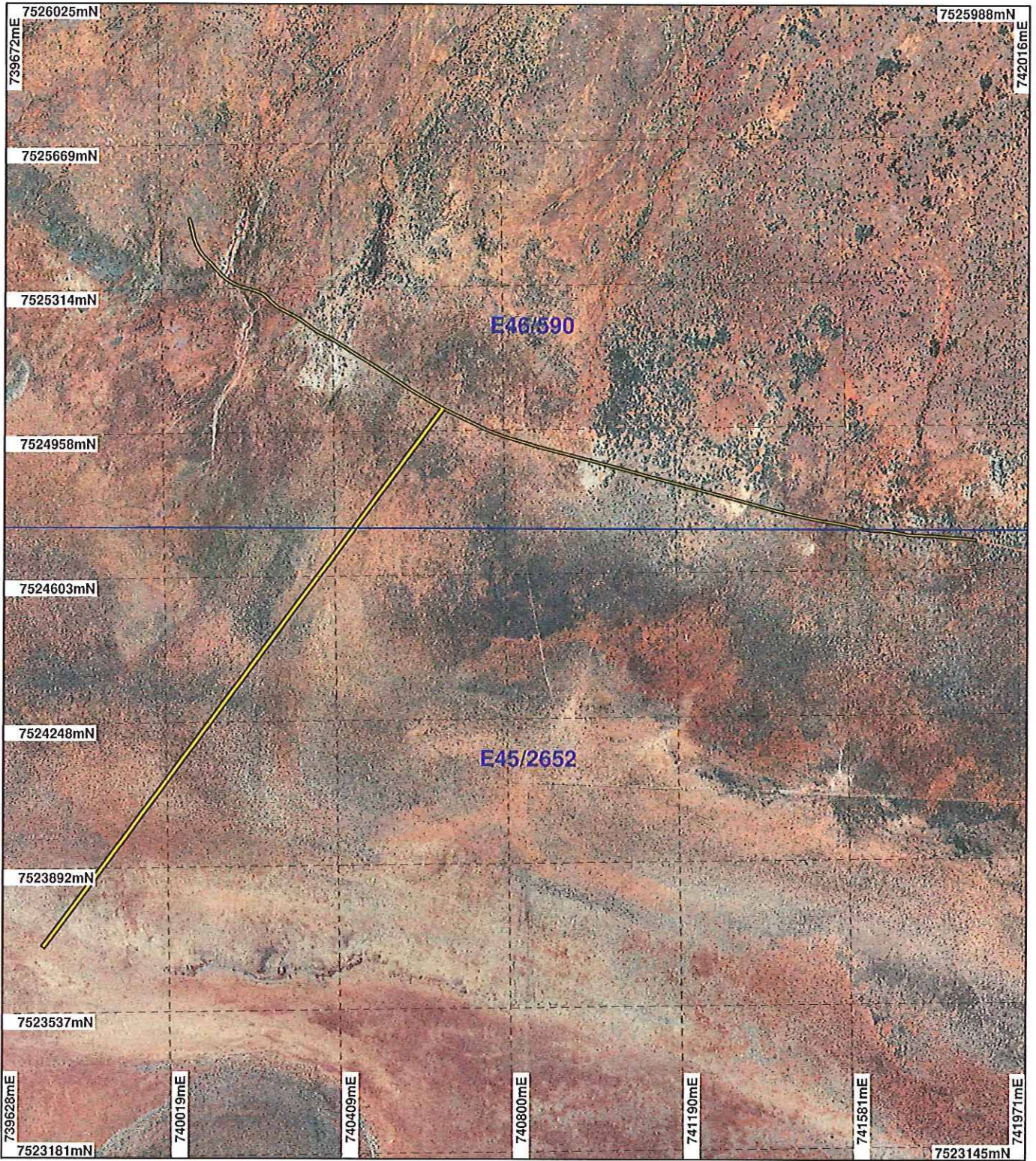
Phil Gorey Date 19/1/2012
PHIL GOREY

Officer with delegated authority under Section 20 of the Environmental Protection Act 1986

Information derived from this map should be confirmed with the data custodian acknowledged by the agency acronym in the legend.

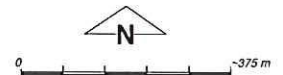


PLAN 4674/1C



LEGEND

- Clearing Instruments**
- Areas Approved to Clear
 - Mining Tenements
- Mount Marsh 50cm
Orthomosaic - Landgate
2008**



Scale 1:13000
(Approximate when reproduced at A4)

Geocentric Datum Australia 1994

Note: the data in this map have not been projected. This may result in geometric distortion or measurement inaccuracies.

 Date 19/1/2012

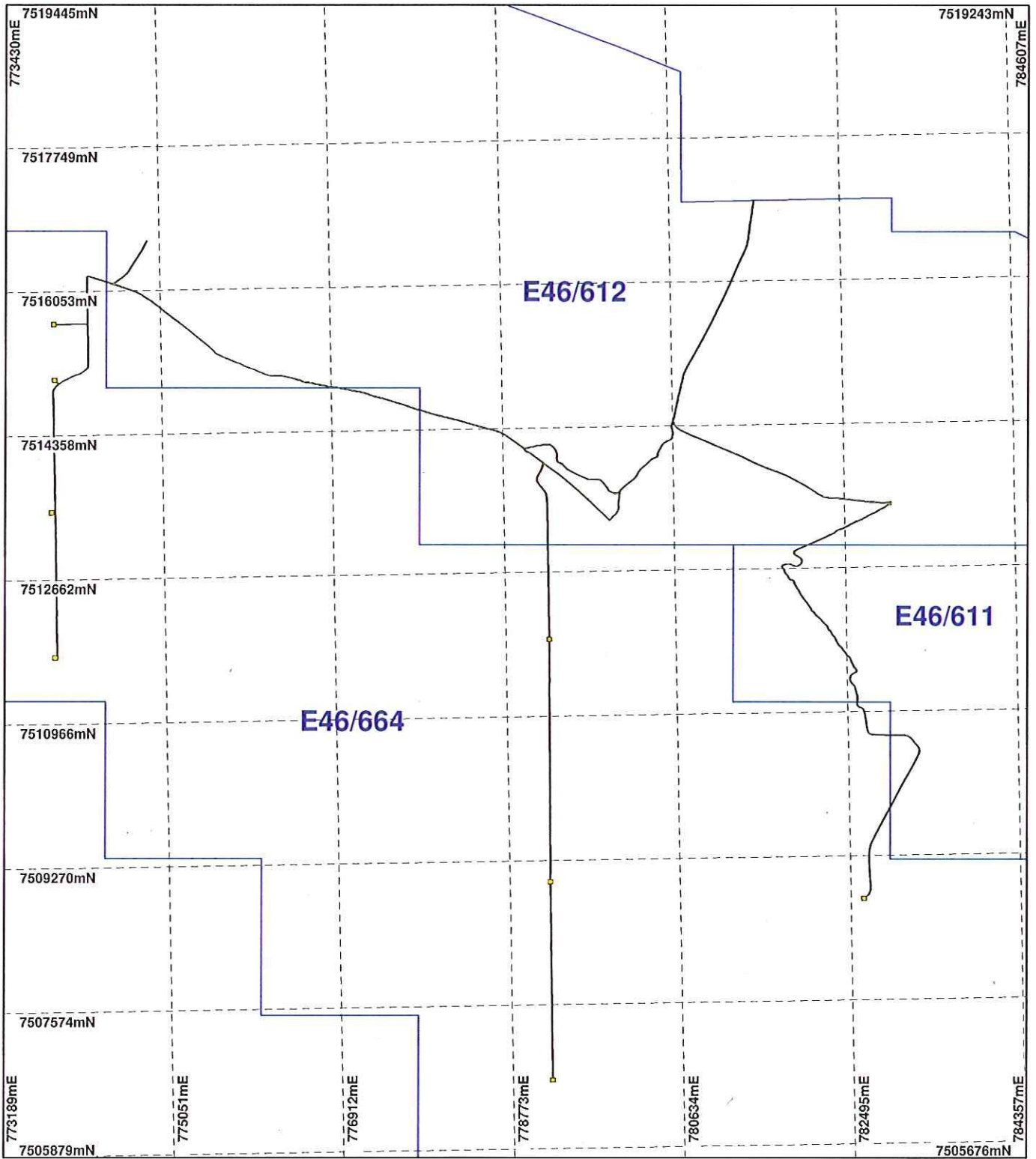
PHIL GOREY
Officer with delegated authority under Section 20 of
the Environmental Protection Act 1986

Information derived from this map should be
confirmed with the data custodian acknowledged
by the agency acronym in the legend.



WA Crown Copyright 2002

PLAN 4674/1D



LEGEND

- Clearing Instruments**
- Areas Approved to Clear
 - Mining Tenements
- Mount Marsh 50cm
Orthomosaic - Landgate
2008



Scale 1:62000
(Approximate when reproduced at A4)

Geocentric Datum Australia 1994

Note: the data in this map have not been projected. This may result in geometric distortion or measurement inaccuracies.

PHIL GOREY

Officer with delegated authority under Section 20 of the Environmental Protection Act 1986

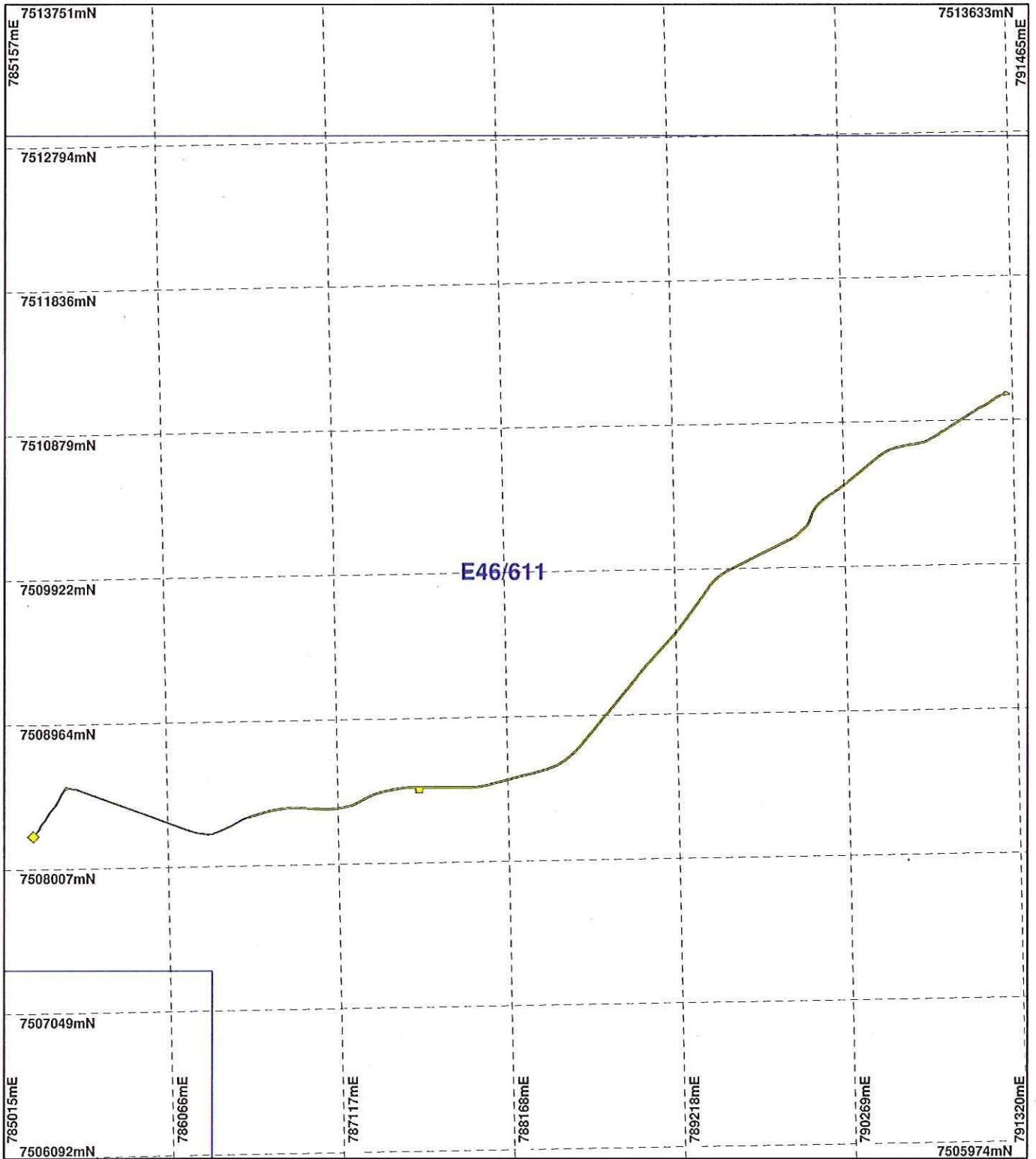
Information derived from this map should be confirmed with the data custodian acknowledged by the agency acronym in the legend.



WA Crown Copyright 2002

Date 19/1/2012

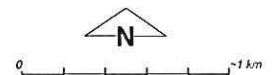
PLAN 4674/1E



LEGEND

Clearing Instruments

- Areas Approved to Clear
 - Mining Tenements
- Mount Marsh 50cm
Orthomosaic - Landgate
2008



Scale 1:35000

(Approximate when reproduced at A4)

Geocentric Datum Australia 1994

Note: the data in this map have not been projected. This may result in geometric distortion or measurement inaccuracies.

PHIL GOREY

Date 19/1/2012

Officer with delegated authority under Section 20 of the Environmental Protection Act 1986

Information derived from this map should be confirmed with the data custodian acknowledged by the agency acronym in the legend.



WA Crown Copyright 2002