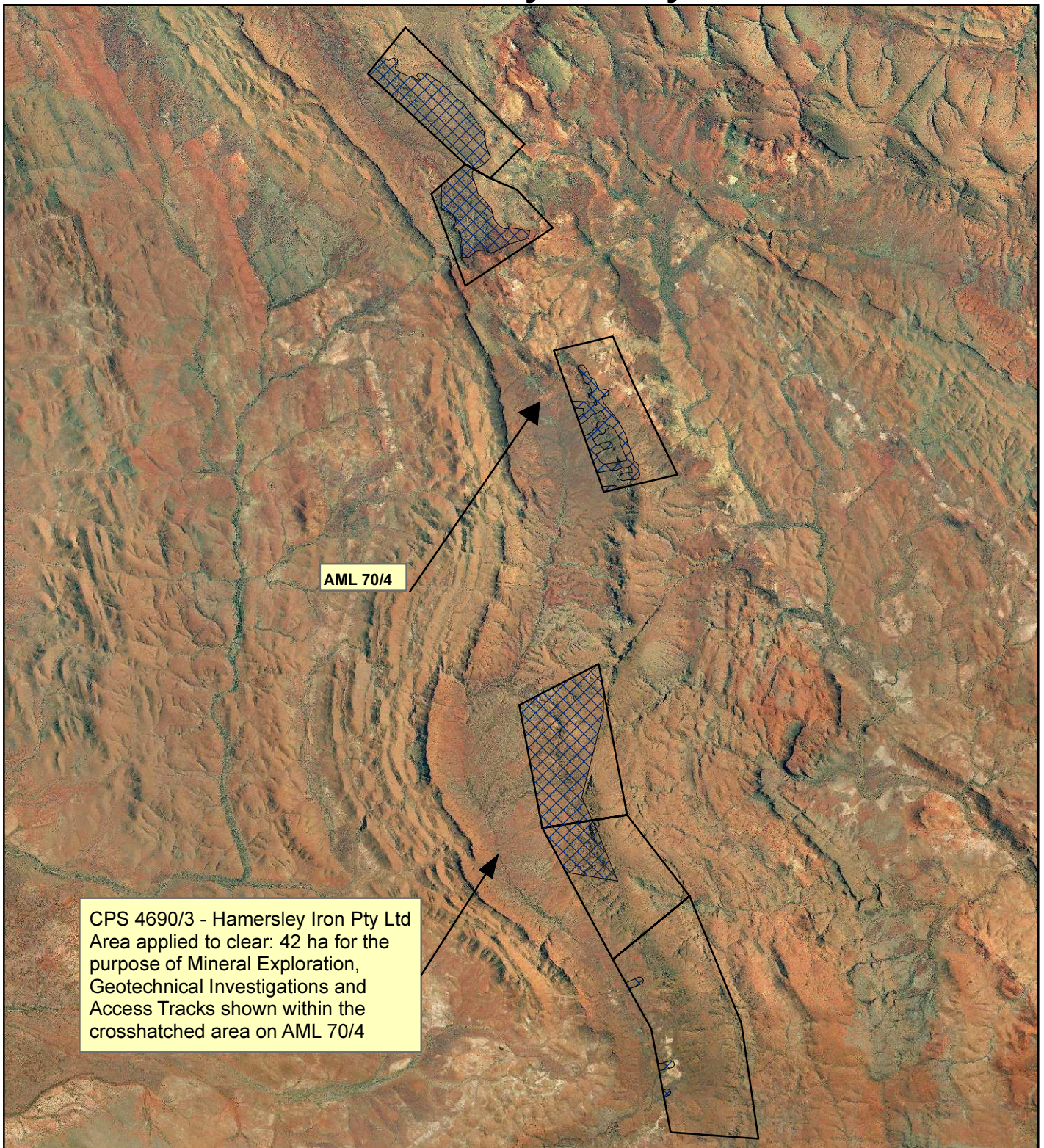


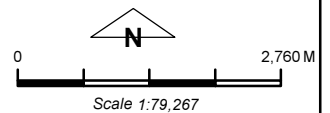
CPS 4690/3 - Hamersley Iron Pty Ltd



CPS 4690/3 - Hamersley Iron Pty Ltd
 Area applied to clear: 42 ha for the
 purpose of Mineral Exploration,
 Geotechnical Investigations and
 Access Tracks shown within the
 crosshatched area on AML 70/4

LEGEND

- Mining Tenements
- Clearing Instruments
- ▨ Areas Applied to Clear
- Topography



Geocentric Datum Australia 1994

Note: the data in this map have not been projected. This may result in geometric distortion or measurement inaccuracies.

..... Date

Officer with delegated authority under Section 20 of the Environmental Protection Act 1986

Information derived from this map should be confirmed with the data custodian acknowledged by the agency acronym in the legend.

