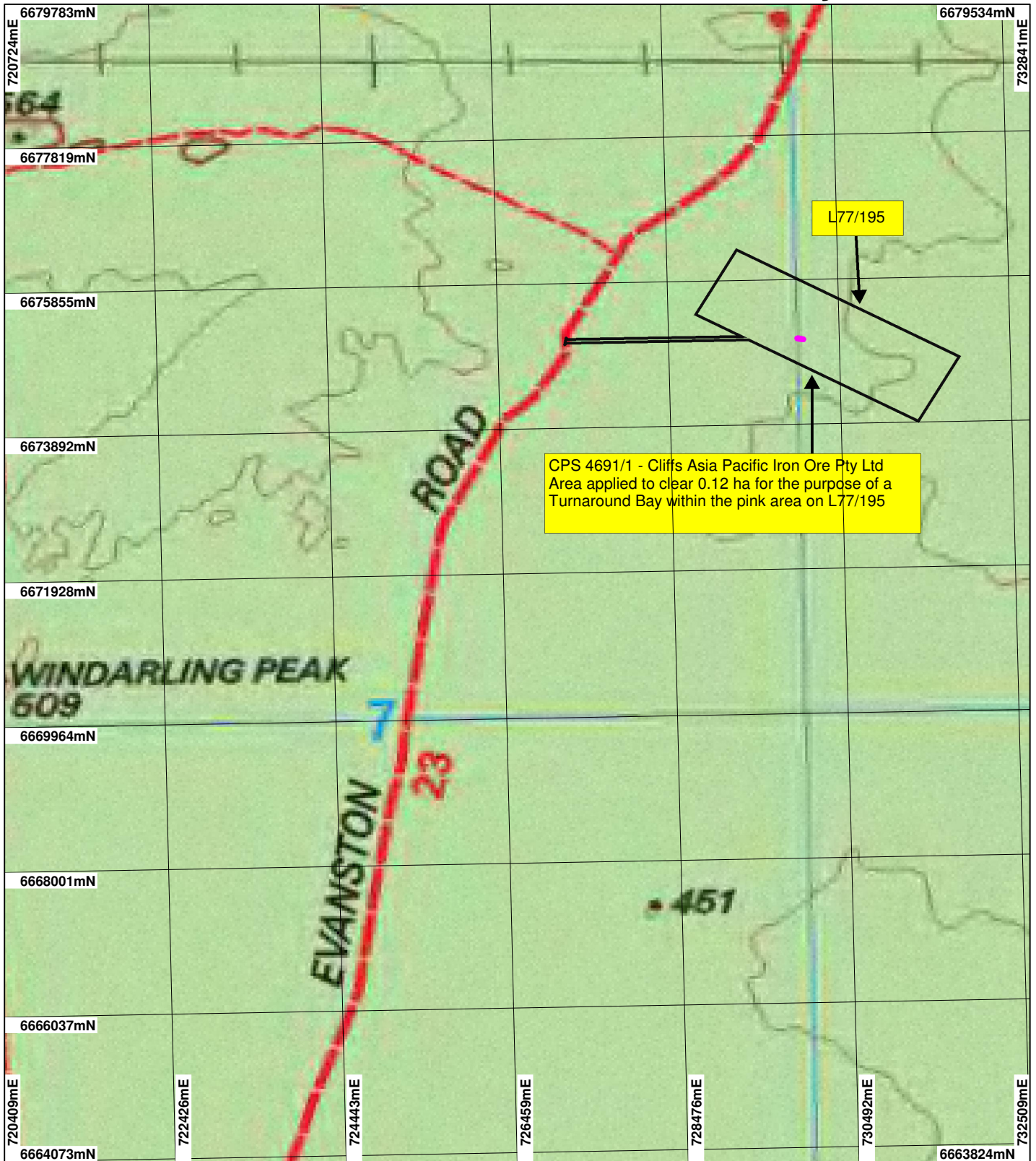


CPS 4691/1 - Cliffs Asia Pacific Iron Ore Pty Ltd



CPS 4691/1 - Cliffs Asia Pacific Iron Ore Pty Ltd
 Area applied to clear 0.12 ha for the purpose of a
 Turnaround Bay within the pink area on L77/195

L77/195

LEGEND

- Mining Tenements
- Clearing Instruments_1
- Areas Applied to Clear
- NATMAP 250K Series Mapping
- GA 08/03



Scale 1:70000
 (Approximate when reproduced at A4)

Geocentric Datum Australia 1994

Note: the data in this map have not been projected. This may result in geometric distortion or measurement inaccuracies.

..... Date

Officer with delegated authority under Section 20 of the Environmental Protection Act 1986

Information derived from this map should be confirmed with the data custodian acknowledged by the agency acronym in the legend.



WESTERN AUSTRALIA
 WA Crown Copyright 2002

* Project Data. This data has not been quality assured. Please contact map author for details.