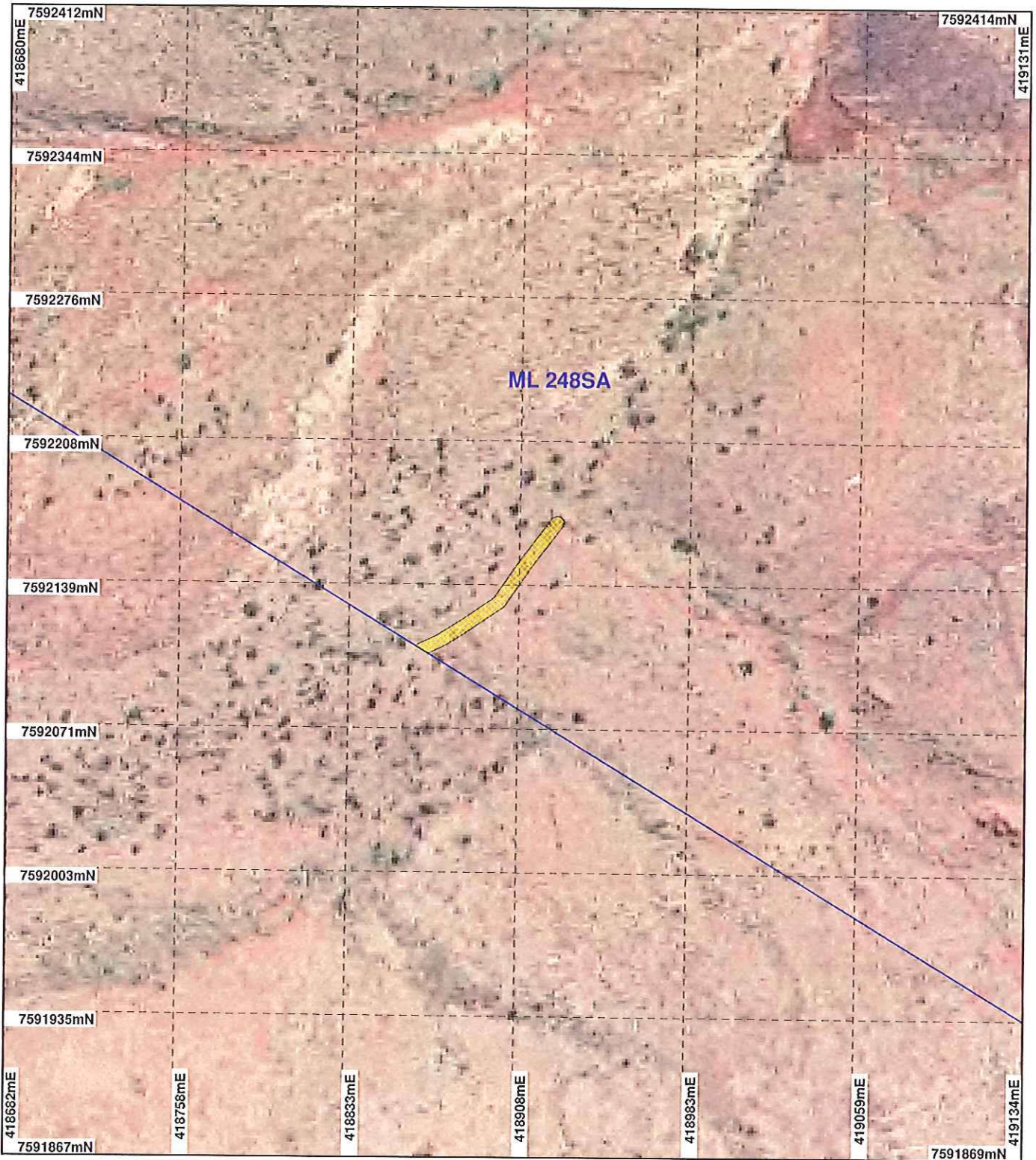
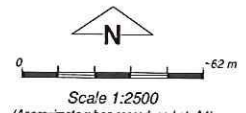


# PLAN 4700/1A



## LEGEND

- Mining Tenements
- Pannawonica 1.4m Orthomosaic - Landgate 2000
- Clearing Instruments
- Areas Approved to Clear



Geocentric Datum Australia 1994  
 Note: the data in this map have not been projected. This may result in geometric distortion or measurement inaccuracies.

*Phil Gorey*  
 PHIL GOREY Date 17/1/2012

Officer with delegated authority under Section 20 of the Environmental Protection Act 1986

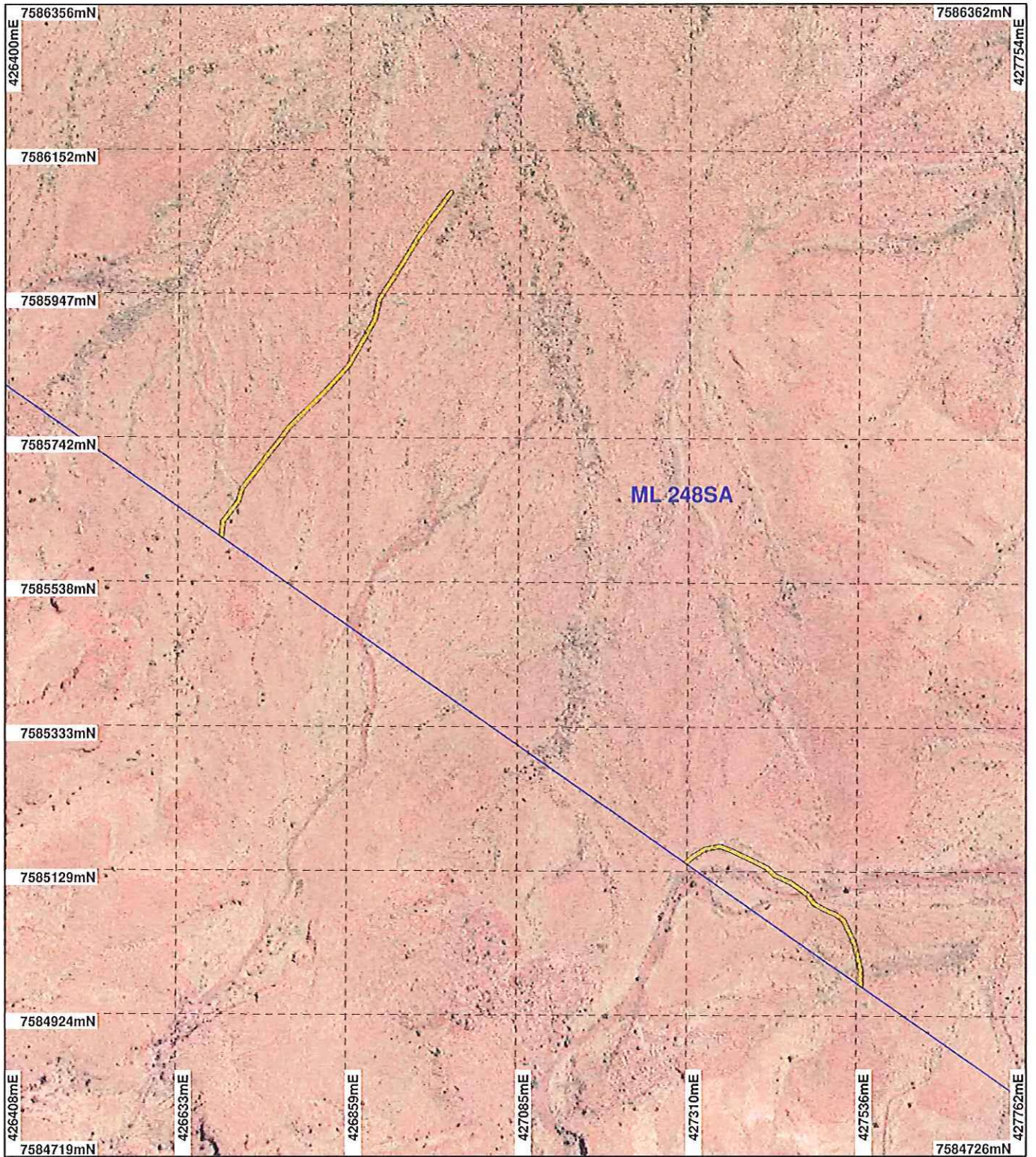
Information derived from this map should be confirmed with the data custodian acknowledged by the agency acronym in the legend.



WA Crown Copyright 2002

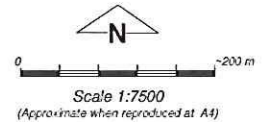
\* Project Data. This data has not been quality assured. Please contact map author for details.

# PLAN 4700/1B



## LEGEND

- Mining Tenements
- Pannawonica 1.4m Orthomosaic - Landgate 2000
- Clearing Instruments
- Areas Approved to Clear



Note: the data in this map have not been projected. This may result in geometric distortion or measurement inaccuracies.

PHIL GOREY

Date 14/1/2012

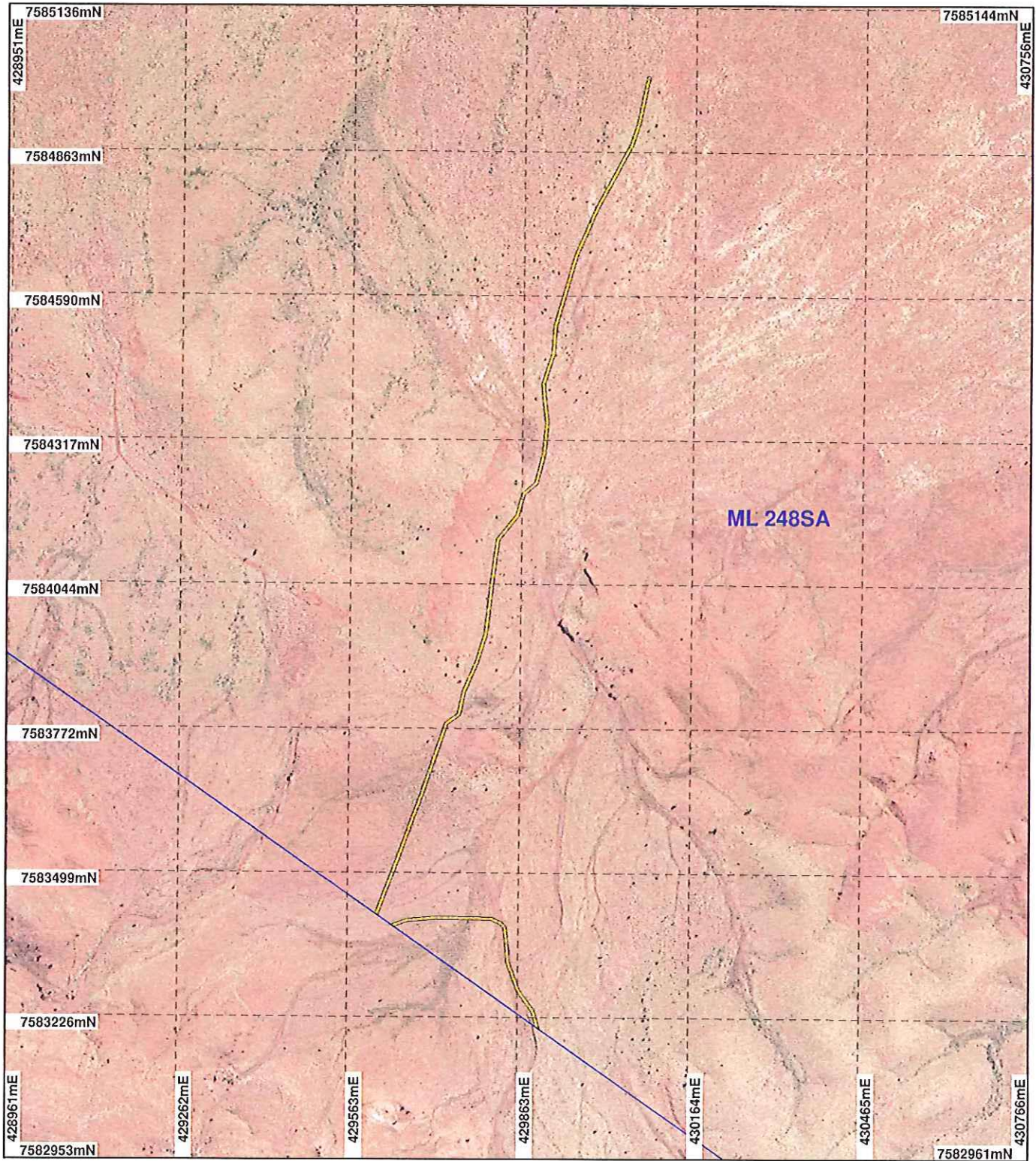
Officer with delegated authority under Section 20 of the Environmental Protection Act 1986

Information derived from this map should be confirmed with the data custodian acknowledged by the agency acronym in the legend.



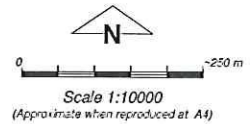
WA Crown Copyright 2008

# PLAN 4700/1C



## LEGEND

- Mining Tenements
- Pannawonica 1.4m Orthomosaic - Landgate 2000
- Clearing Instruments
- Areas Approved to Clear



Geocentric Datum Australia 1994  
Note: the data in this map have not been projected. This may result in geometric distortion or measurement inaccuracies.

Date: 19/1/2012  
PHIL GOREY

Officer with delegated authority under Section 20 of the Environmental Protection Act 1986

Information derived from this map should be confirmed with the data custodian acknowledged by the agency acronym in the legend.



WA Crown Copyright 2002