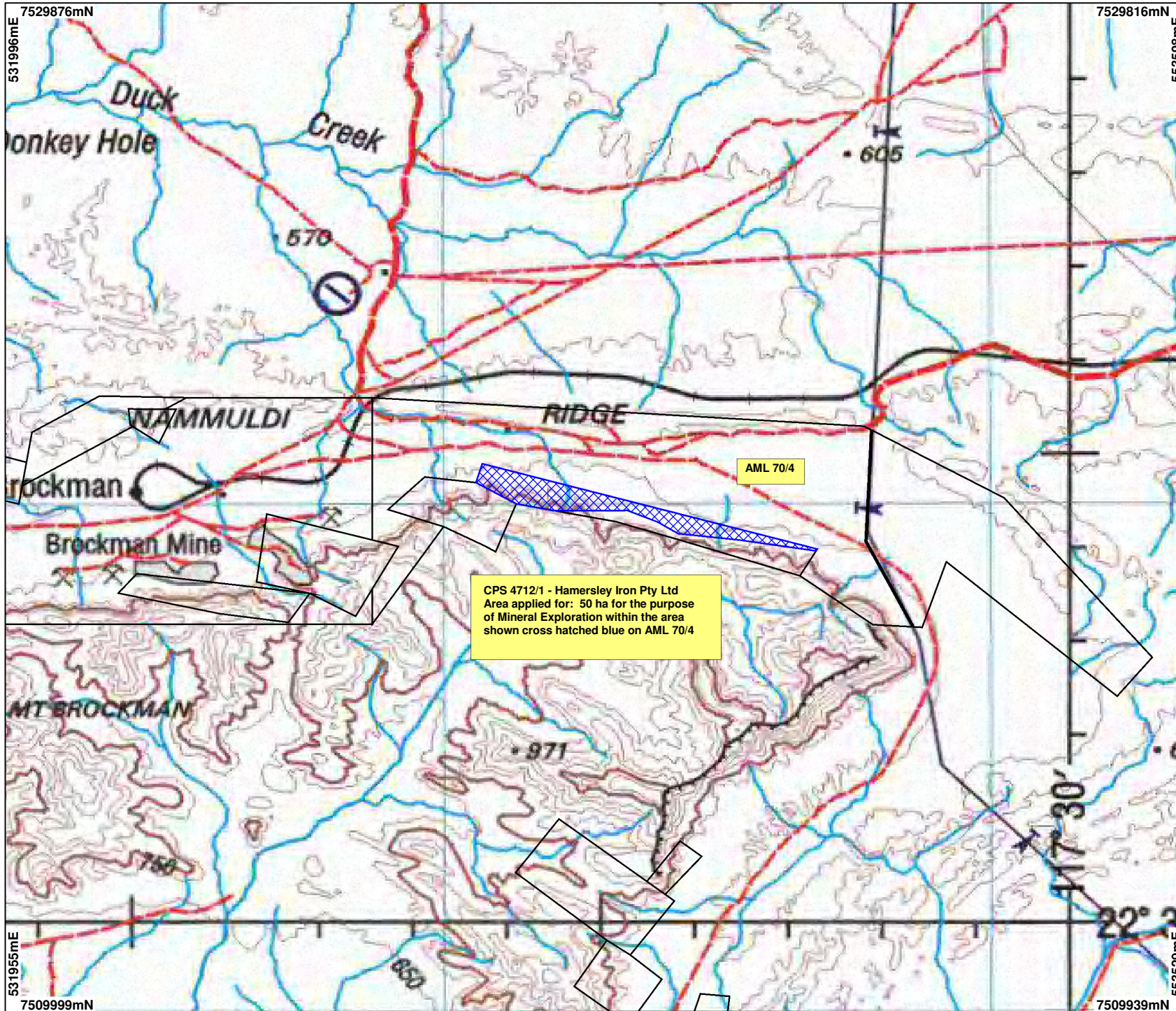




# CPS 4712/1 - Hamersley Iron Pty Ltd

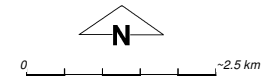


CPS 4712/1 - Hamersley Iron Pty Ltd  
 Area applied for: 50 ha for the purpose  
 of Mineral Exploration within the area  
 shown cross hatched blue on AML 70/4

## LEGEND

-  Mining Tenements
-  Clearing Instruments
- NATMAP 250K Series Mapping - GA 08/03

\* Project Data. This data has not been quality assured. Please contact map author for details.



Scale 1:100000  
 (Approximate when reproduced at A4)

Geocentric Datum Australia 1994

Note: the data in this map have not been projected. This may result in geometric distortion or measurement inaccuracies.

..... Date .....

Officer with delegated authority under Section 20 of the Environmental Protection Act 1986

Information derived from this map should be confirmed with the data custodian acknowledged by the agency acronym in the legend.

