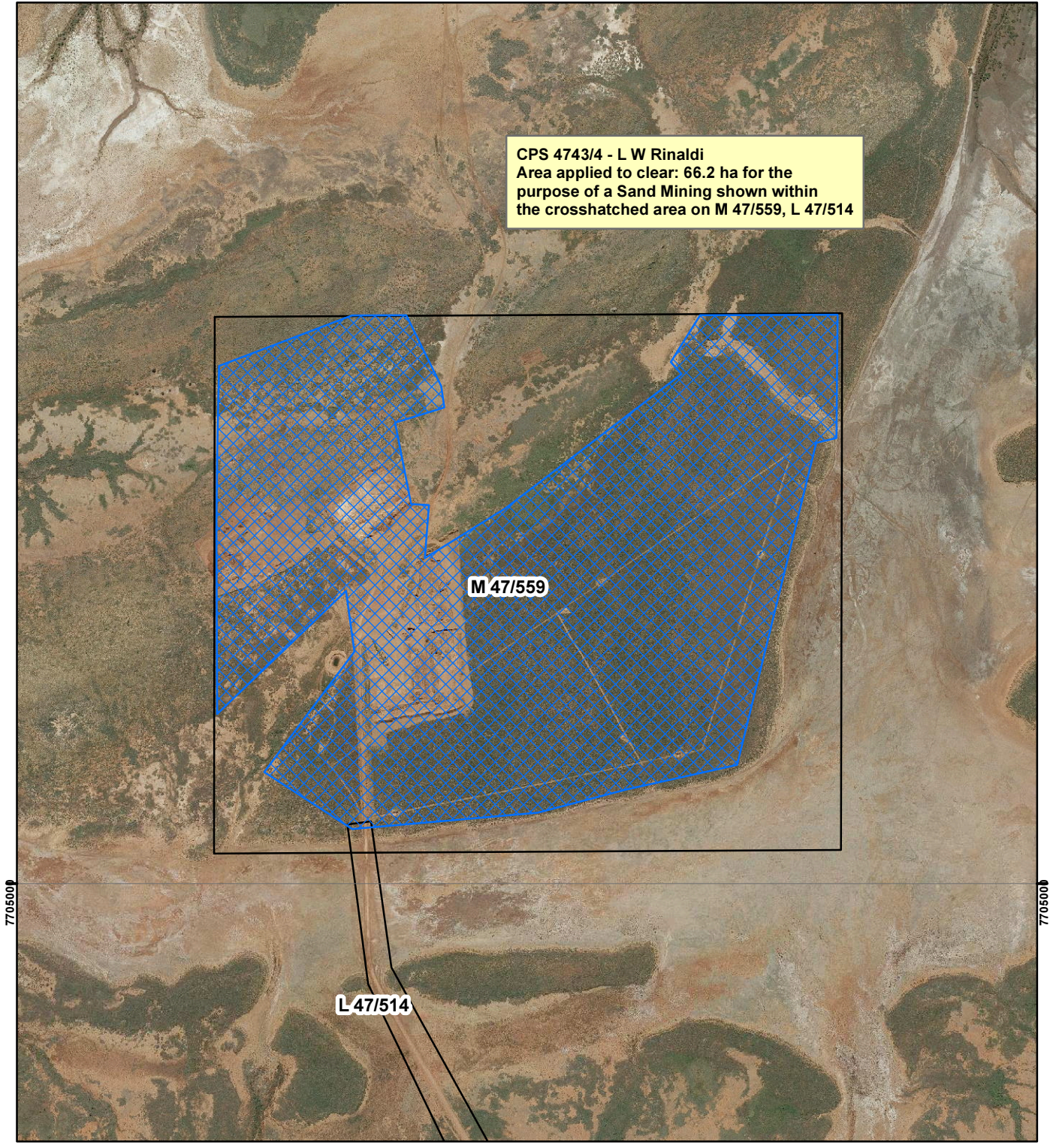



# CPS 4743/4 - L W Rinaldi


CPS 4743/4 - L W Rinaldi  
Area applied to clear: 66.2 ha for the  
purpose of a Sand Mining shown within  
the crosshatched area on M 47/559, L 47/514

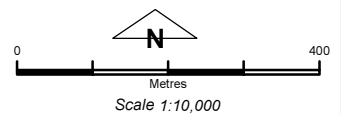


## Legend

 Clearing Instruments

## Mining Tenements

 Mining Tenements



Geocentric Datum Australia 1994

*Note: the data in this map have not been projected. This may result in geometric distortion or measurement inaccuracies.*

..... Date .....

Officer with delegated authority under Section 20 of the Environmental Protection Act 1986

Information derived from this map should be confirmed with the data custodian acknowledged by the agency acronym in the legend.

