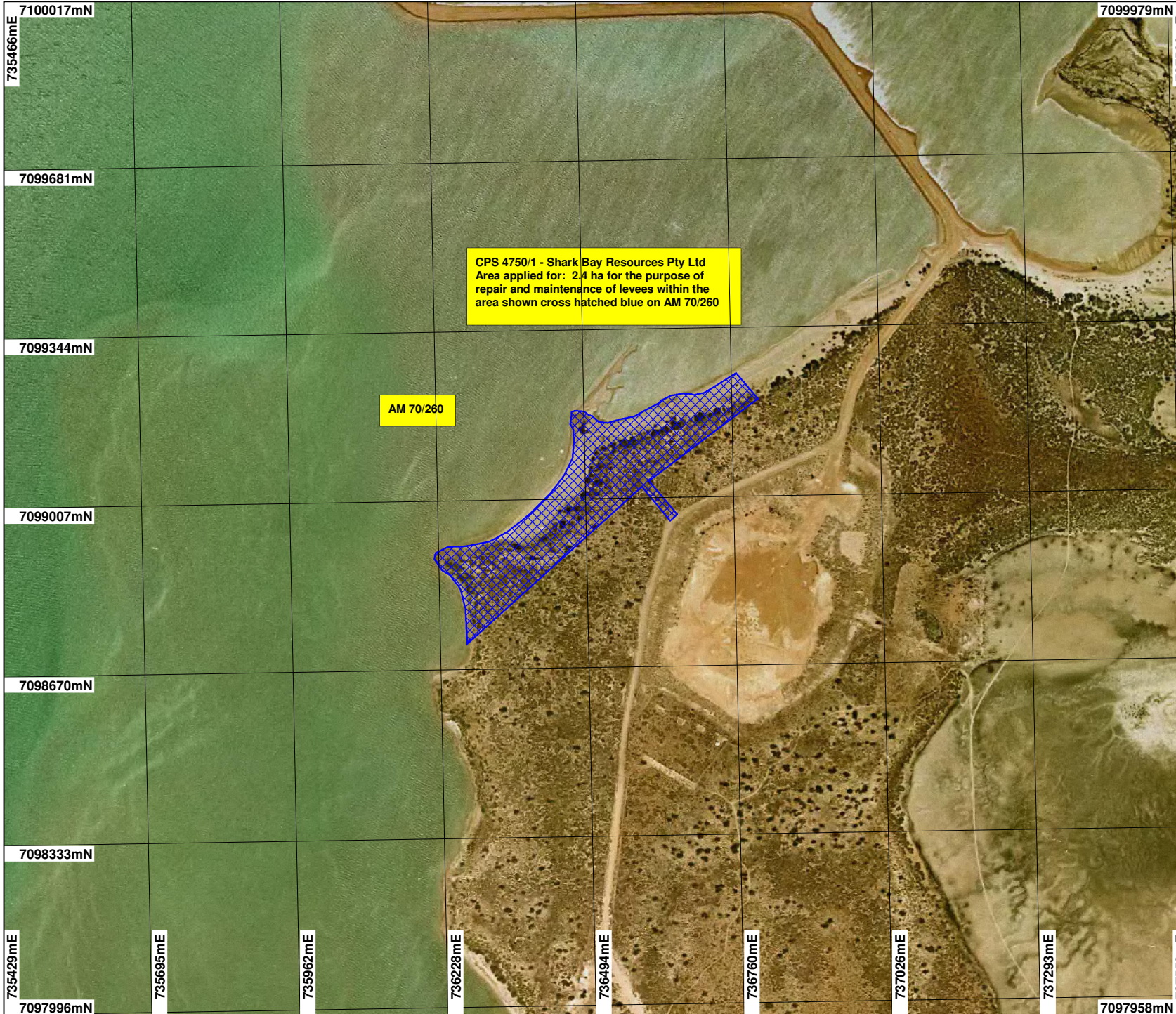


CPS 4750/1 - Shark Bay Resources Pty Ltd

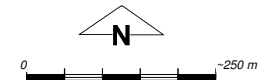


- LEGEND**
- Mining Tenements
 - Clearing Instruments
 - Shark Bay 1.4m Orthomosaic - Landgate 2002

CPS 4750/1 - Shark Bay Resources Pty Ltd
 Area applied for: 2.4 ha for the purpose of
 repair and maintenance of levees within the
 area shown cross hatched blue on AM 70/260

AM 70/260

* Project Data. This data has not been quality assured. Please contact map author for details.



Scale 1:10000
 (Approximate when reproduced at A4)

Geocentric Datum Australia 1994

Note: the data in this map have not been projected. This may result in geometric distortion or measurement inaccuracies.

..... Date

Officer with delegated authority under Section 20 of the Environmental Protection Act 1986

Information derived from this map should be confirmed with the data custodian acknowledged by the agency acronym in the legend.



WA Crown Copyright 2002