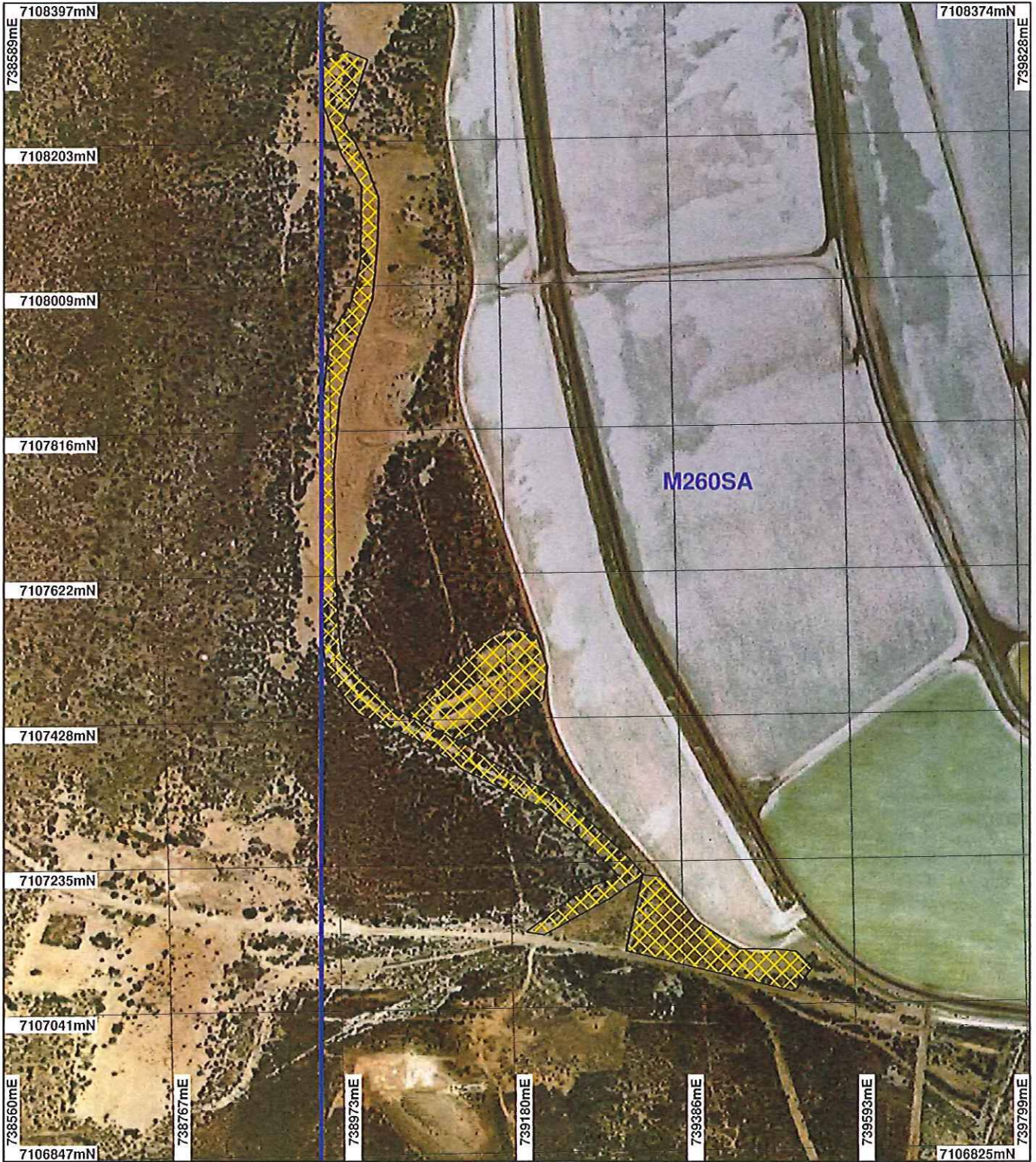


PLAN 4755/1A

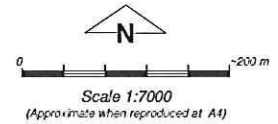


LEGEND

Clearing Instruments

- Areas Approved to Clear
- Mining Tenements
- Cadastral

Shark Bay 1.4m Orthomosaic - Landgate 2002



Geocentric Datum Australia 1994

Note: the data in this map have not been projected. This may result in geometric distortion or measurement inaccuracies.

Date 16/2/2012

PHIL GOREY
Officer with delegated authority under Section 20 of the Environmental Protection Act 1986

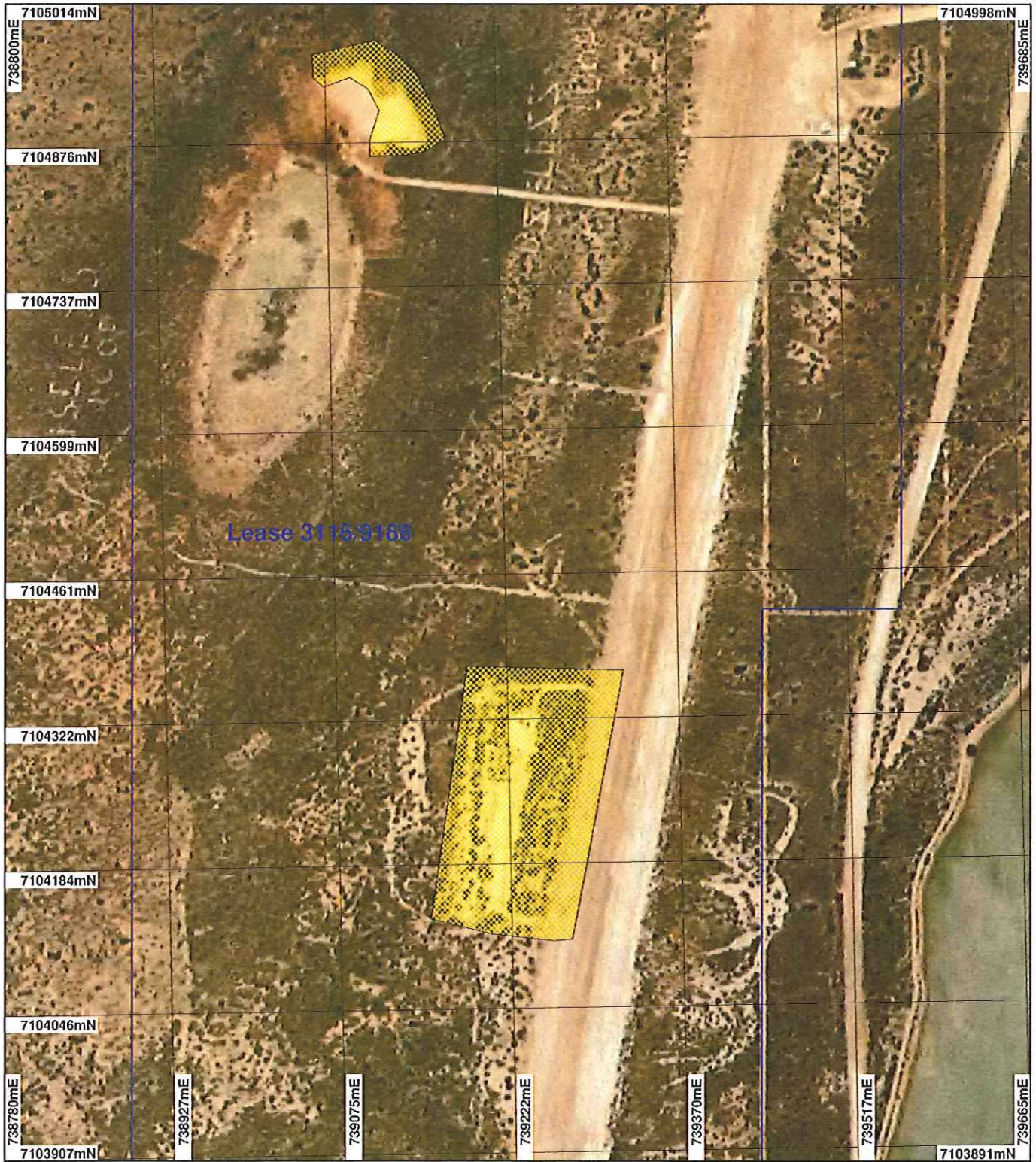
Information derived from this map should be confirmed with the data custodian acknowledged by the agency acronym in the legend.



WA Crown Copyright 2002

* Project Data. This data has not been quality assured. Please contact map author for details.

PLAN 4755/1B



LEGEND

- Clearing Instruments**
- Areas Approved to Clear
 - Mining Tenements
 - Cadastre

Shark Bay 1.4m Orthomosaic - Landgate 2002



Scale 1:5000
(Approximate when reproduced at A4)

Geocentric Datum Australia 1994

Note: the data in this map have not been projected. This may result in geometric distortion or measurement inaccuracies.

Phil Gorey
Date: 16/6/2012

PHIL GOREY
Officer with delegated authority under Section 20 of the Environmental Protection Act 1986

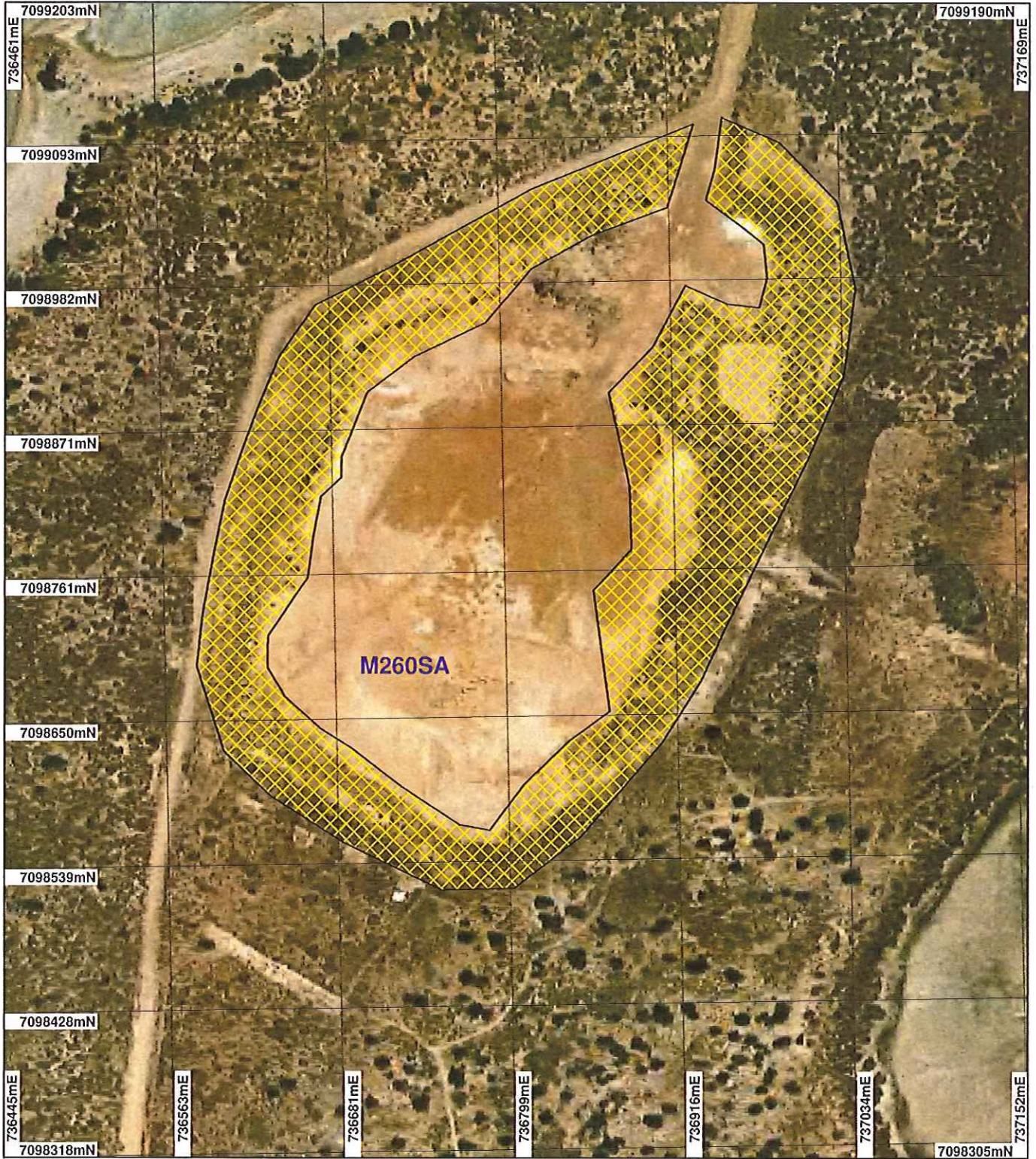
Information derived from this map should be confirmed with the data custodian acknowledged by the agency acronym in the legend.



WA Crown Copyright 2002

* Project Data. This data has not been quality assured. Please contact map author for details.

PLAN 4755/1C



LEGEND

- Clearing Instruments**
- Areas Approved to Clear
 - Mining Tenements
 - Cadastre
- Shark Bay 1.4m Orthomosaic - Landgate 2002**

0 ————— 100 m
 Scale 1:4000
 (Approximate when reproduced at A4)

Geocentric Datum Australia 1994
 Note: the data in this map have not been projected. This may result in geometric distortion or measurement inaccuracies.

Date 18/6/2012

PHIL GOREY

Officer with delegated authority under Section 20 of the Environmental Protection Act 1986

Information derived from this map should be confirmed with the data custodian acknowledged by the agency acronym in the legend.



WA Crown Copyright 2002

* Project Data. This data has not been quality assured. Please contact map author for details.