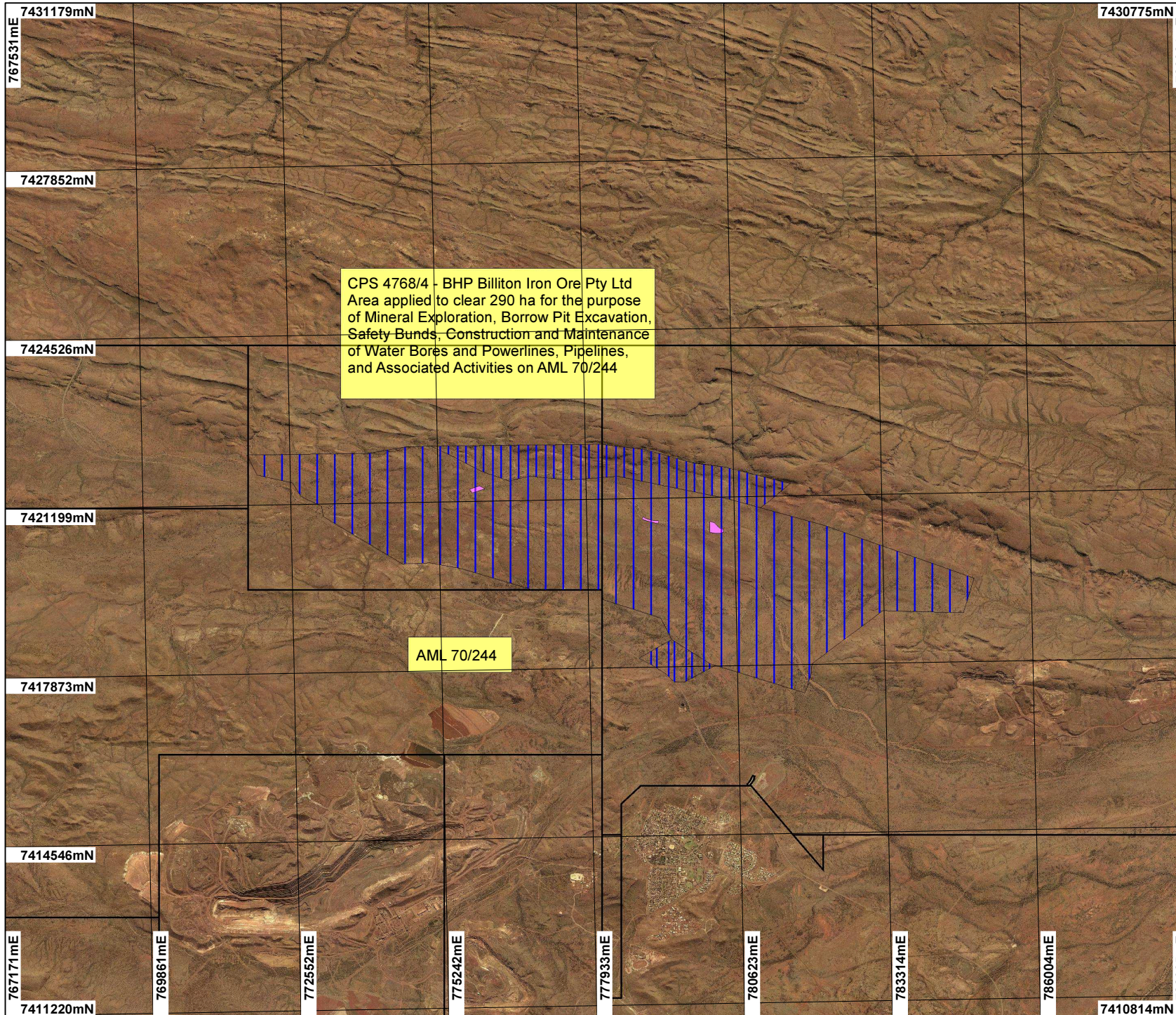


CPS 4768/4 - BHP Billiton Iron Ore Pty Ltd

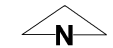


CPS 4768/4 - BHP Billiton Iron Ore Pty Ltd
 Area applied to clear 290 ha for the purpose of Mineral Exploration, Borrow Pit Excavation, Safety Bunds, Construction and Maintenance of Water Bores and Powerlines, Pipelines, and Associated Activities on AML 70/244

AML 70/244

LEGEND

- Mining Tenements
- Clearing Instruments
- ▨ Areas Applied to Clear
- ▨ Newman 1.4m Orthomosaic - Landgate 2003



Scale 1:100000
 (Approximate when reproduced at A4)

Geocentric Datum Australia 1994

Note: the data in this map have not been projected. This may result in geometric distortion or measurement inaccuracies.

..... Date

Officer with delegated authority under Section 20 of the Environmental Protection Act 1986

Information derived from this map should be confirmed with the data custodian acknowledged by the agency acronym in the legend.

