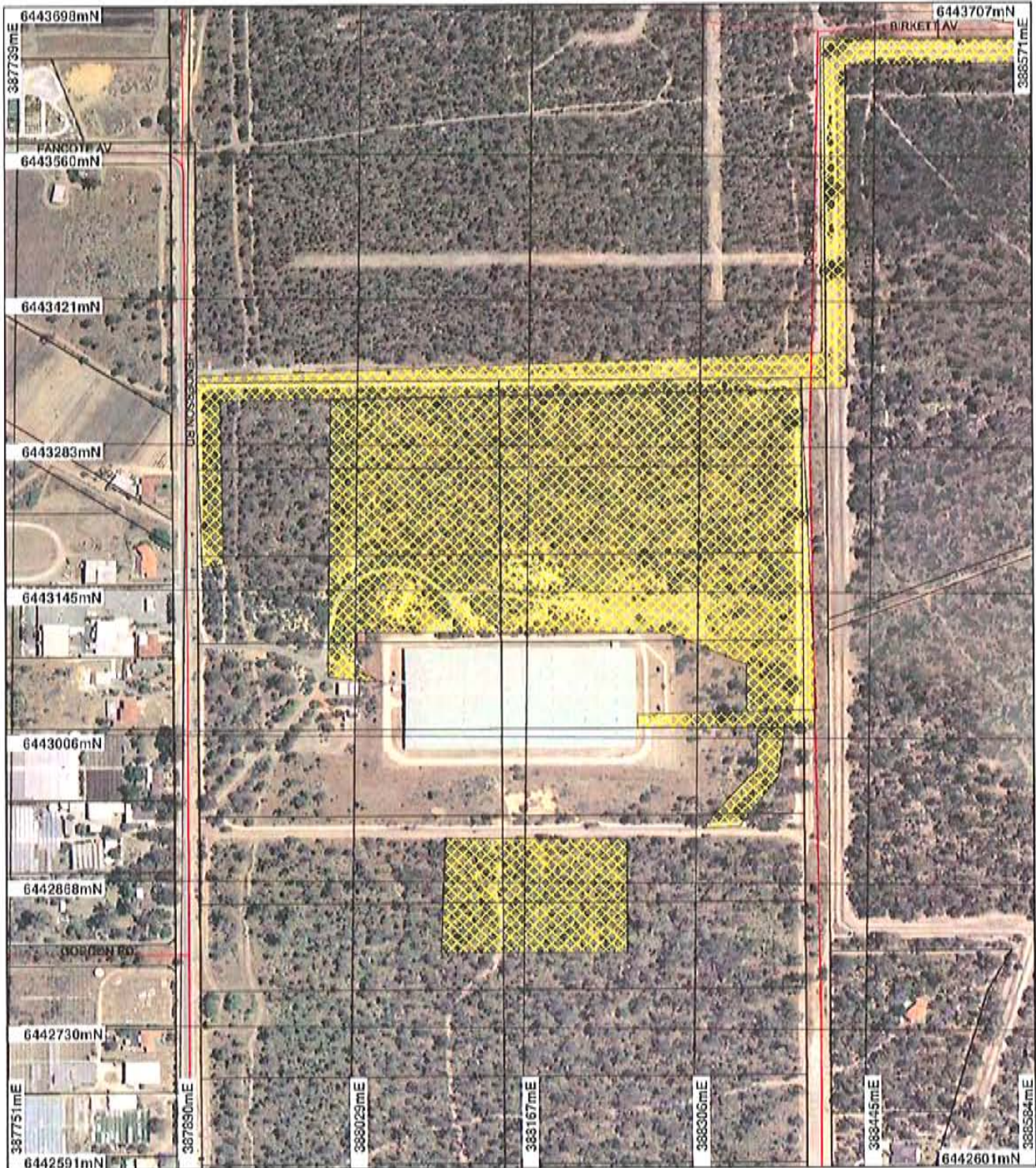
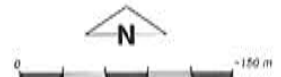


Plan 479/4a



LEGEND

- | | |
|------------------------------|--|
| Clearing Instruments | <input type="checkbox"/> Cadastre - DLI |
| Areas Approved to Clear | <input type="checkbox"/> Swan Coastal Plain North |
| Road Centrelines - DLI 1/504 | <input type="checkbox"/> 40cm Orthomosaic - DLI 03 |



Scale 1:5114

(Approximate when reproduced at A1)

Geocentric Datum Australia 1994

Note: If data in this map have not been updated, this may result in geometric distortion or measurement inaccuracies.

Kim Lyle

Date 9/2/07

Officer with delegated authority under Section 20 of the Environmental Protection Act 1986

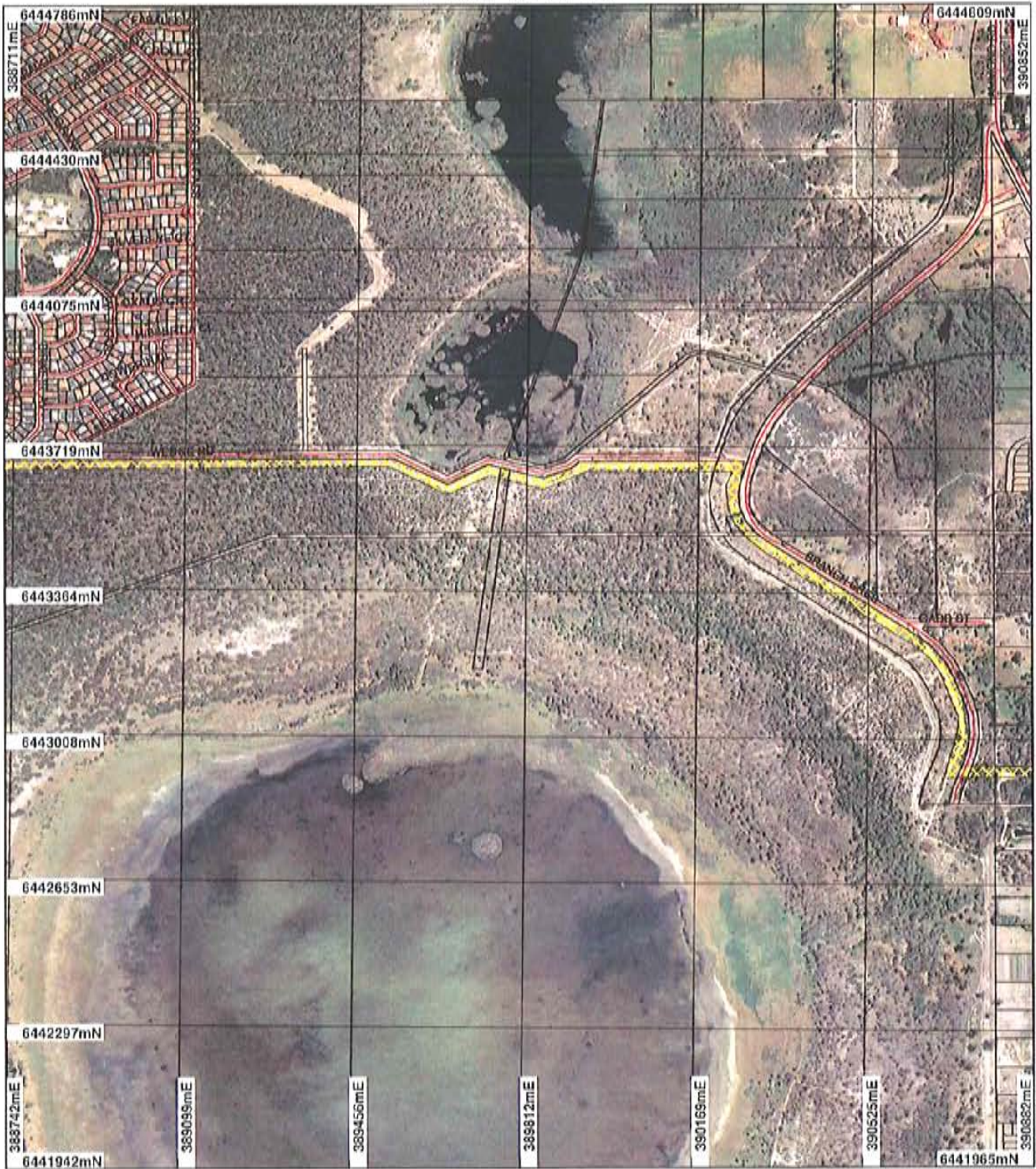
Information derived from this map should be confirmed with the data custodian acknowledged by the agency acronym in the legend.



Department of Environment

WA Drawn Copyright 2002

Plan 479/4b



LEGEND

Clearing Instruments

- Areas Approved to Clear
- Road Centrelines - DLI 1/3/04

Cadastral - DLI

- Swan Coastal Plain North 40cm Orthomosaic - DLI 03



Scale 1:13145

(Approximate when reproduced at A4)

Geocentric Datum Australia 1994

Note: the data in this map have not been checked. This may result in geometric distortion or measurement inaccuracies.

Date 9/2/02

Kim Taylor
Officer with delegated authority under Section 29 of the Environmental Protection Act 1986

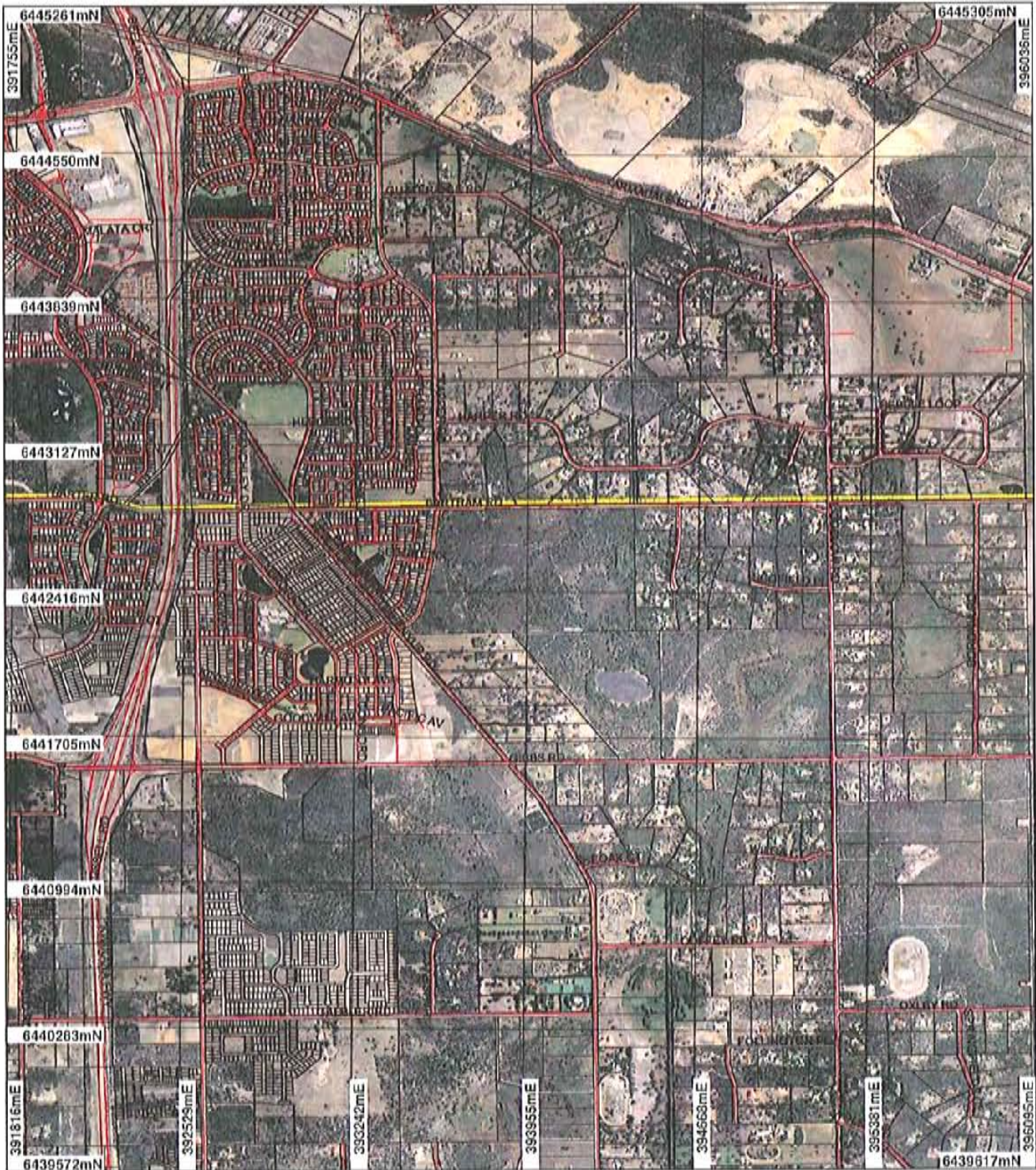
Information derived from this map should be confirmed with the data custodian acknowledged by the agency acronym in the legend.



Department of Environment

WA Crown Copyright 2002

Plan 479/4c



LEGEND

Clearing Instruments

- Areas Approved to Clear
- Road Centrelines - DLI 1/504

- Cadastre - DLI
- Swan Coastal Plain North 40cm Orthomosaic - DLI 05



Scale 1:26268

(Approximate when reproduced at A4)

Geocentric Datum Australia 1994

Note: the data in this map have not been projected. This may result in geometric distortion or measurement inaccuracies.

Kim Taylor
Date 9/2/07

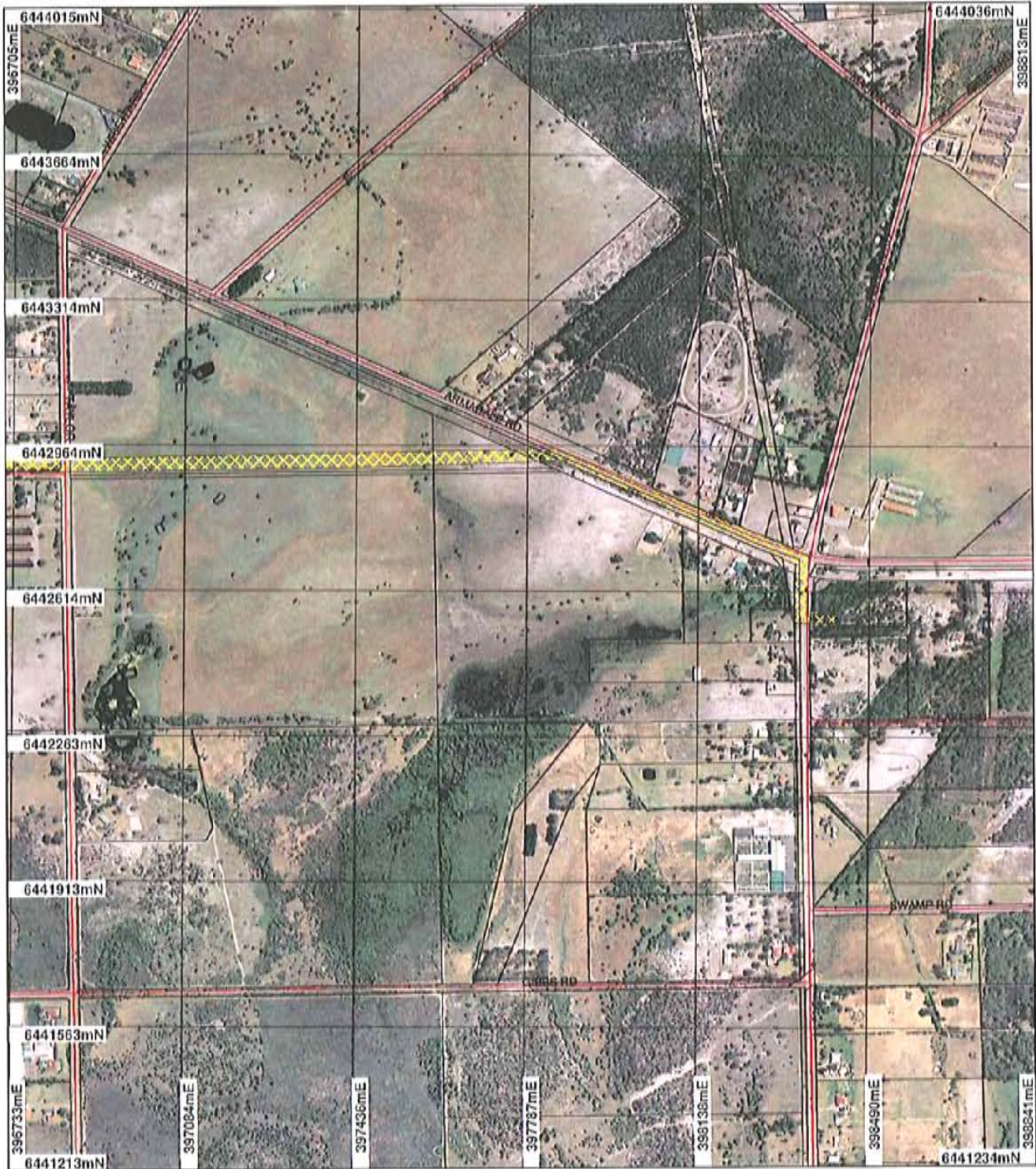
Officer with delegated authority under Section 20 of the Environmental Protection Act 1986

Information derived from this map should be confirmed with the data custodian acknowledged by the agency acronym in the legend.



WA Crown Copyright 2002

Plan 479/4d



LEGEND

Clearing Instruments

- Areas Approved to Clear
- Road Centrelines - DLI 1/5/04

Cadastral - DLI

- Swan Coastal Plain North 40cm Orthomosaic - DLI 05



Scale 1:12949

(Approximate when reproduced at A4)

Geocentric Datum Australia 1994

Note: The data in this map have not been checked. This may result in geometric distortion or measurement inaccuracies.

Date 9/2/07

Kim Taylor
Officer with delegated authority under Section 20 of the Environmental Protection Act 1986

Information derived from this map should be confirmed with the data custodian acknowledged by the agency acronym in the legend.



WAGrow Copyright 2002