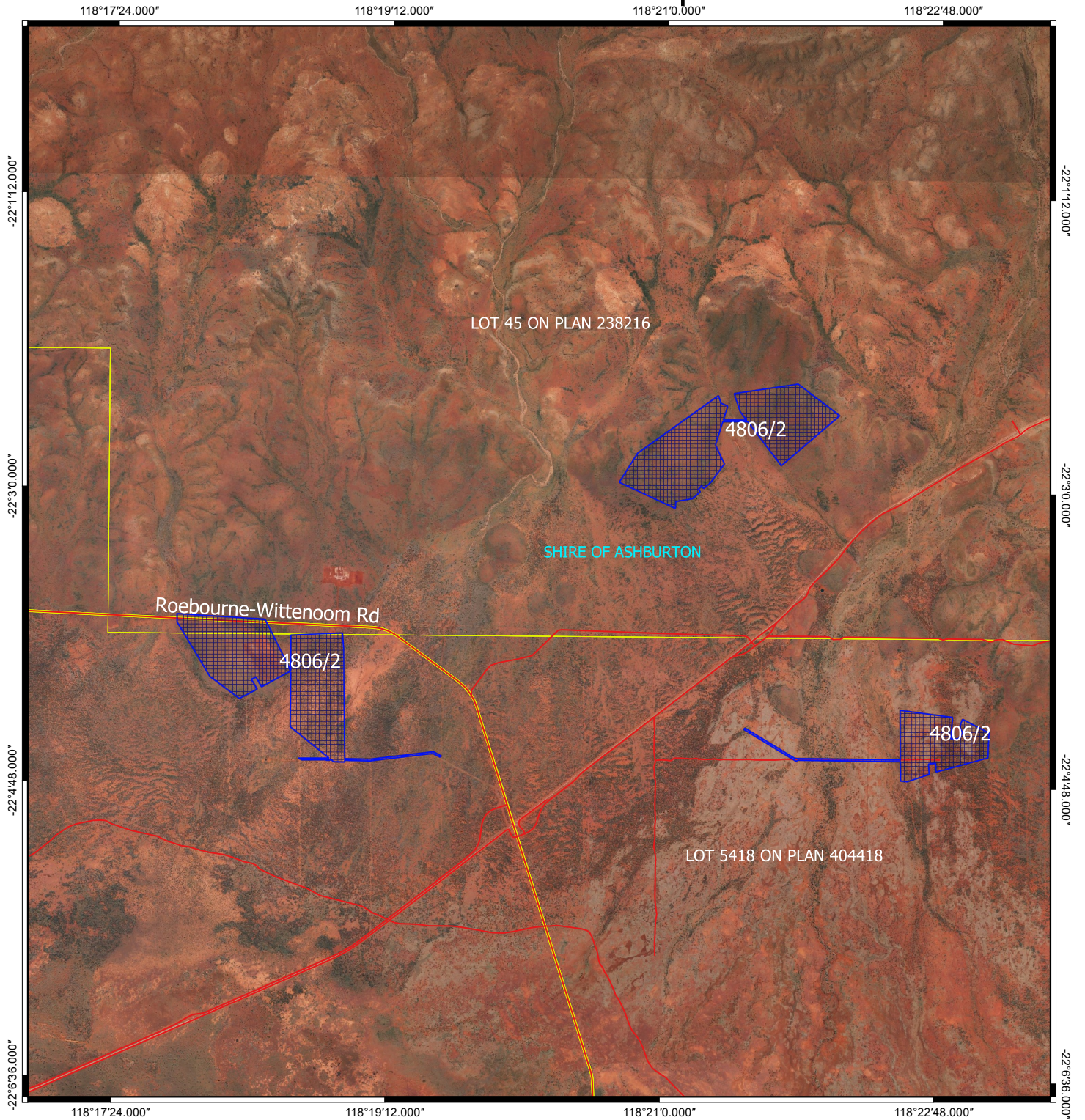






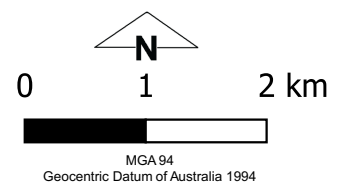
# CPS 4806/2 - Map



## Legend

-  CPS areas applied to clear
-  Local Government Authorities
-  Cadastre
-  Roads

Image



Officer with delegated authority under Section 20  
of the Environmental Protection Act 1986



GOVERNMENT OF  
WESTERN AUSTRALIA  
WA Crown Copyright 2018