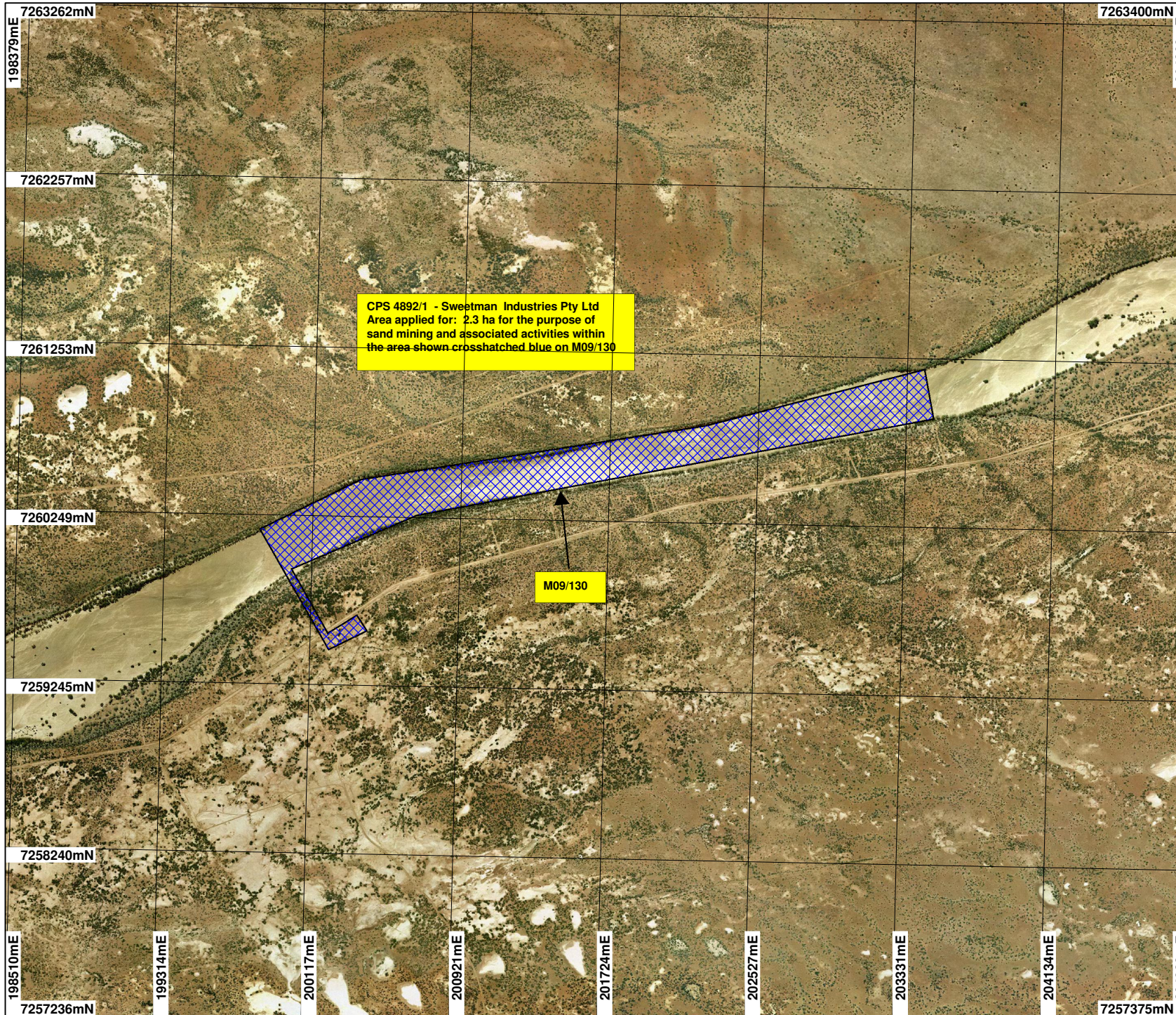


CPS 4892/1 - Sweetman Industries Pty Ltd



CPS 4892/1 - Sweetman Industries Pty Ltd
 Area applied for: 2.3 ha for the purpose of
 sand mining and associated activities within
 the area shown crosshatched blue on M09/130

M09/130

LEGEND

- Mining Tenements
Clearing Instruments
- ▒ Areas Applied to Clear
Doorawarrah 1.4m Orthomosaic - Landgate
2002

* Project Data. This data has not been quality assured. Please contact map author for details.



Scale 1:30000
 (Approximate when reproduced at A4)

Geocentric Datum Australia 1994
 Note: the data in this map have not been projected. This may result in geometric distortion or measurement inaccuracies.

..... Date

Officer with delegated authority under Section 20 of the Environmental Protection Act 1986

Information derived from this map should be confirmed with the data custodian acknowledged by the agency acronym in the legend.

