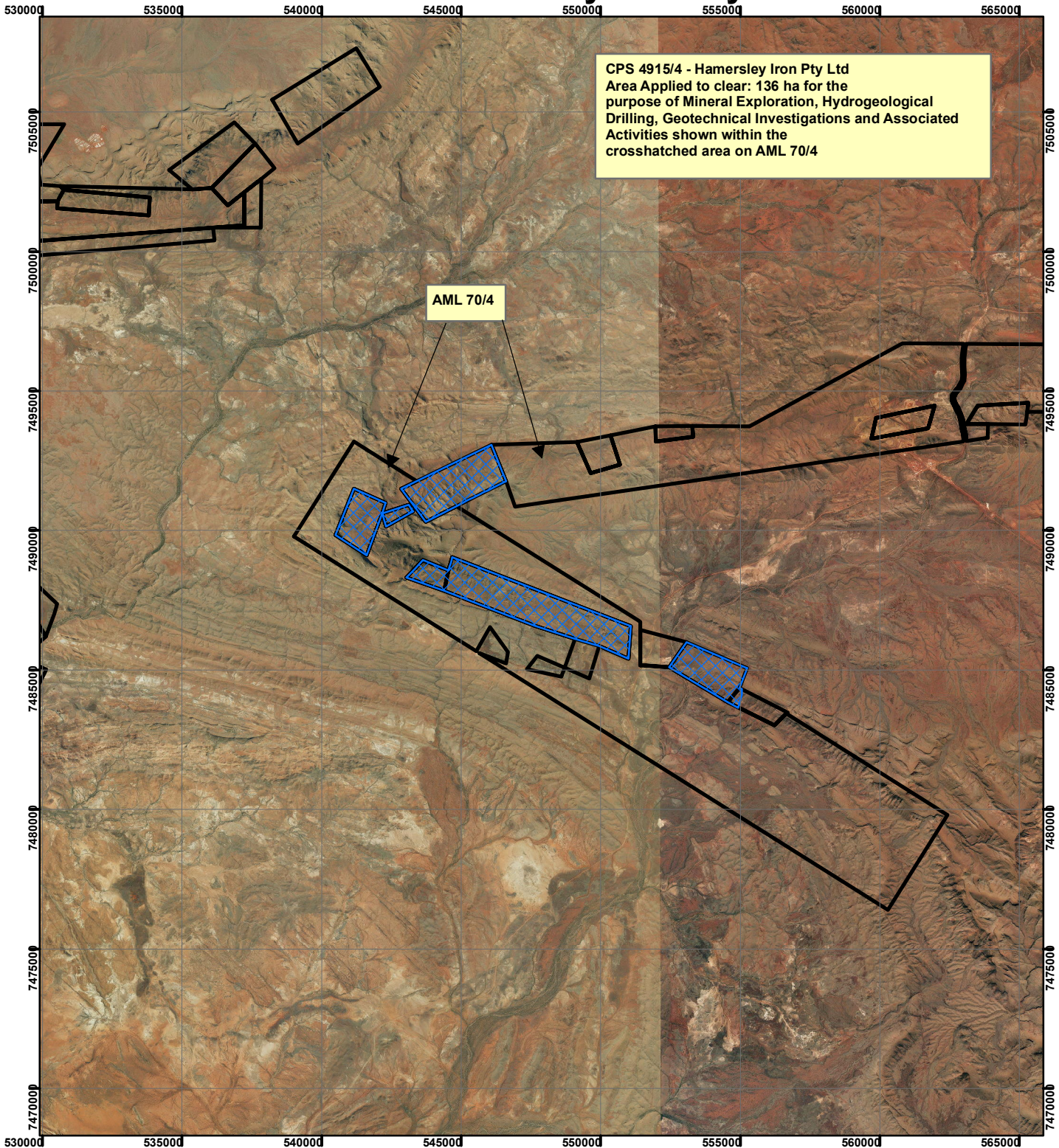



# CPS 4915/4 - Hamersley Iron Pty Ltd



CPS 4915/4 - Hamersley Iron Pty Ltd  
 Area Applied to clear: 136 ha for the  
 purpose of Mineral Exploration, Hydrogeological  
 Drilling, Geotechnical Investigations and Associated  
 Activities shown within the  
 crosshatched area on AML 70/4

AML 70/4

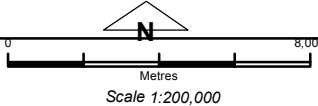
## Legend

 Clearing Instruments

## Mining Tenements

FMT\_TENID

 ML 4SA



Geocentric Datum Australia 1994  
 Note: the data in this map have not been  
 projected. This may result in geometric  
 distortion or measurement inaccuracies.

..... Date .....

Officer with delegated authority under Section 20 of  
 the Environmental Protection Act 1986

Information derived from this map should be  
 confirmed with the data custodian acknowledged  
 by the agency acronym in the legend.

