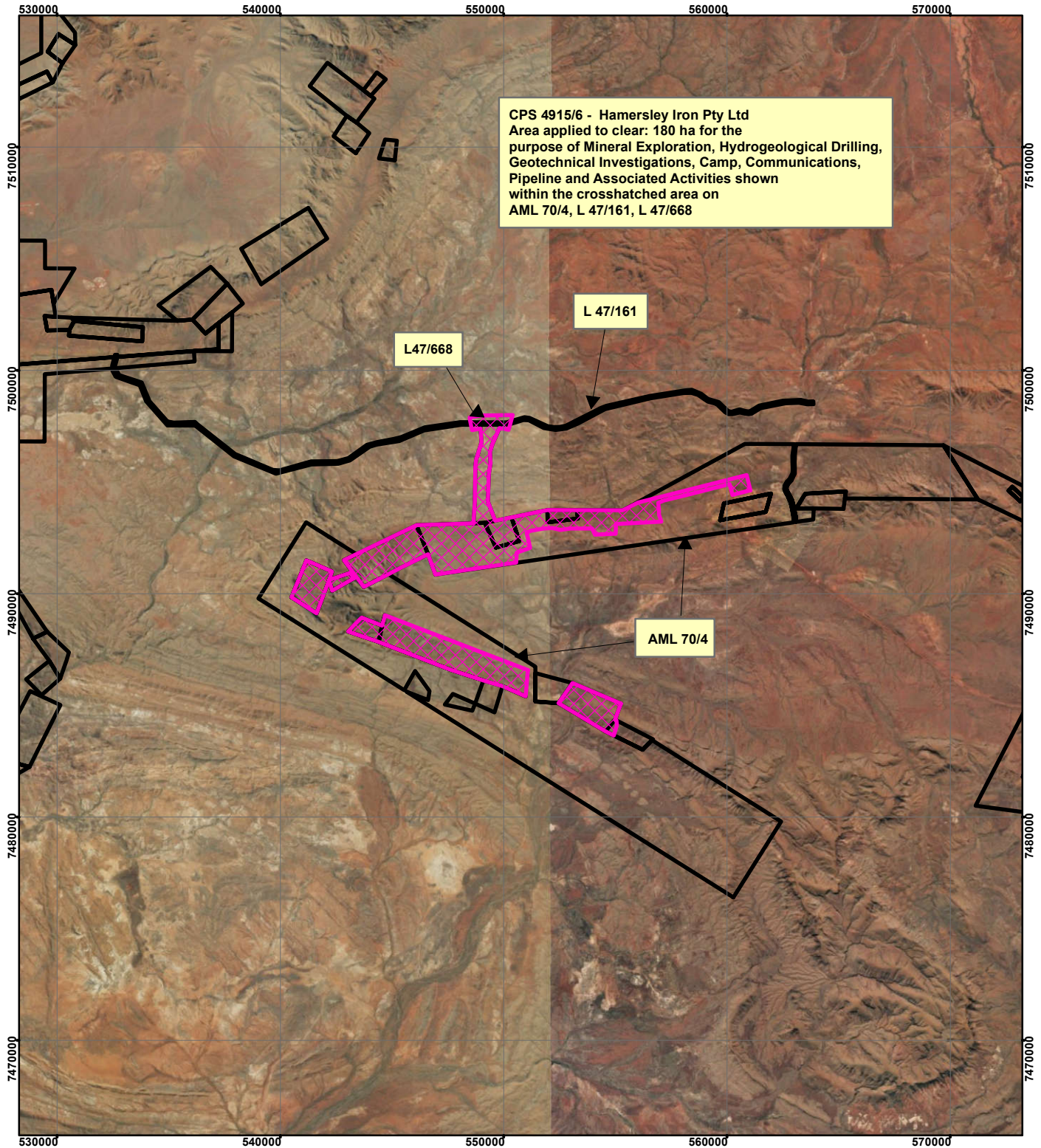




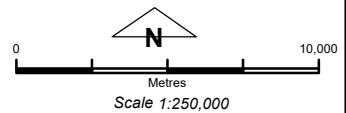
# CPS 4915/6 - Hamersley Iron Pty Ltd



CPS 4915/6 - Hamersley Iron Pty Ltd  
 Area applied to clear: 180 ha for the  
 purpose of Mineral Exploration, Hydrogeological Drilling,  
 Geotechnical Investigations, Camp, Communications,  
 Pipeline and Associated Activities shown  
 within the crosshatched area on  
 AML 70/4, L 47/161, L 47/668

## Legend

-  Clearing Instruments
-  Mining Tenements



Geocentric Datum Australia 1994

*Note: the data in this map have not been projected. This may result in geometric distortion or measurement inaccuracies.*

..... Date .....

Officer with delegated authority under Section 20 of the Environmental Protection Act 1986

Information derived from this map should be confirmed with the data custodian acknowledged by the agency acronym in the legend.

