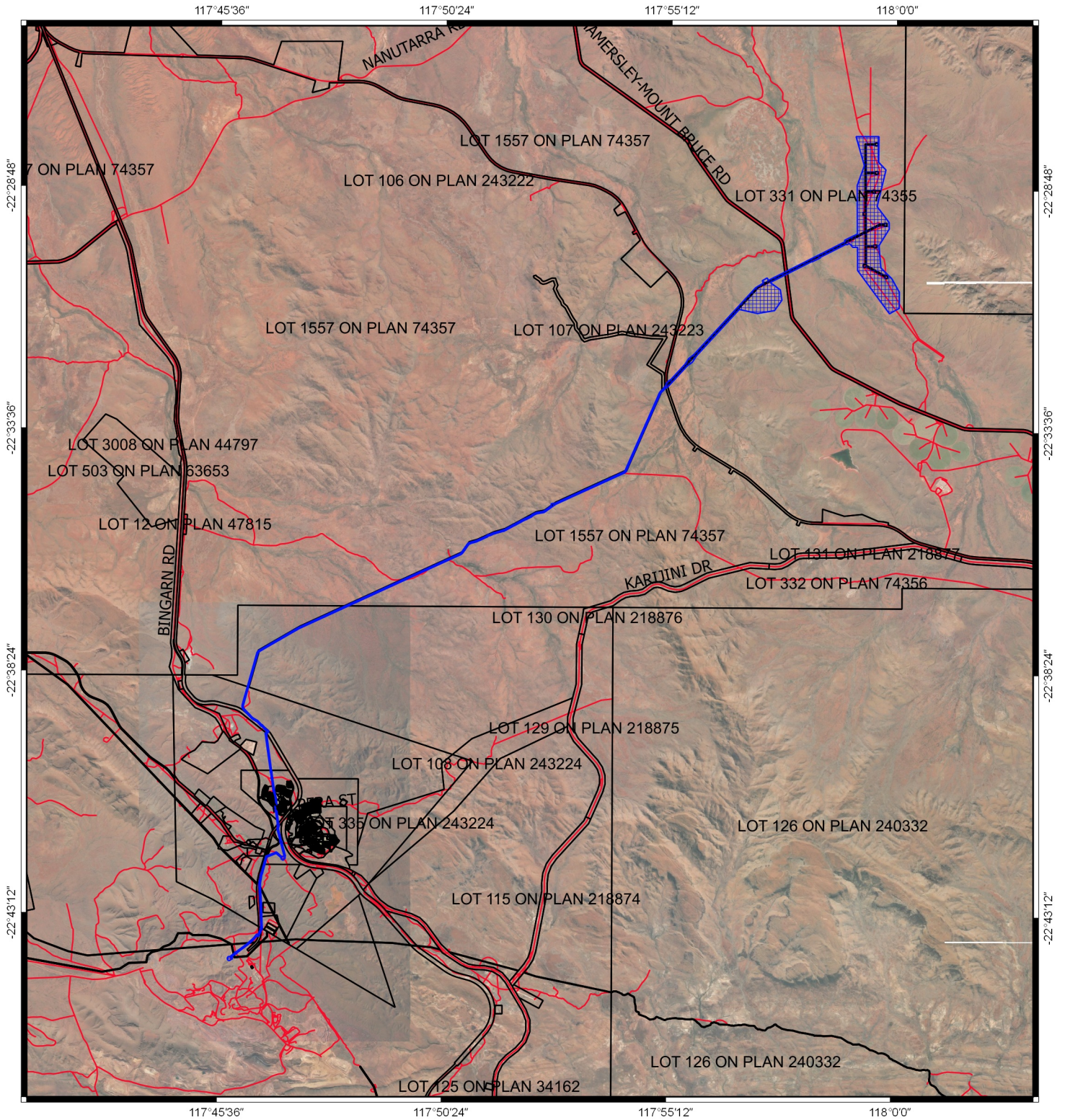


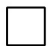



CPS 4919/4 - Map



Legend

-  CPS areas applied to clear
-  Roads
-  Cadastre
-  Local Government Authority



7 0 7 km



MGA 94
Geocentric Datum of Australia 1994

.....Date.....

Officer with delegated authority under Section 20
of the Environmental Protection Act 1986



**GOVERNMENT OF
WESTERN AUSTRALIA**