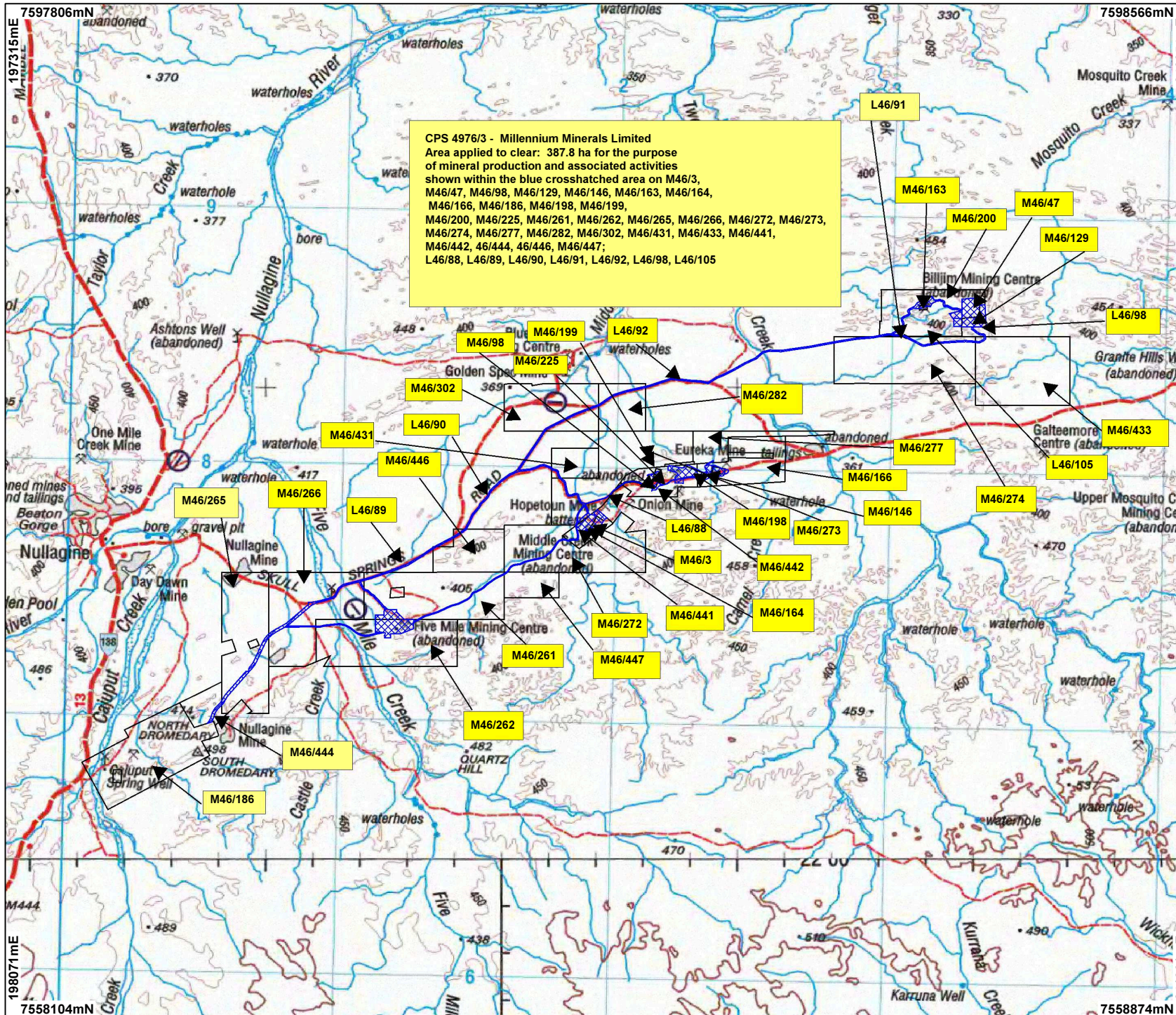


CPS 4976/3 - Millennium Minerals Limited



CPS 4976/3 - Millennium Minerals Limited
 Area applied to clear: 387.8 ha for the purpose of mineral production and associated activities shown within the blue crosshatched area on M46/3, M46/47, M46/98, M46/129, M46/146, M46/163, M46/164, M46/166, M46/186, M46/198, M46/199, M46/200, M46/225, M46/261, M46/262, M46/265, M46/266, M46/272, M46/273, M46/274, M46/277, M46/282, M46/302, M46/431, M46/433, M46/441, M46/442, 46/444, 46/446, M46/447; L46/88, L46/89, L46/90, L46/91, L46/92, L46/98, L46/105

LEGEND

- Mining Tenements
- Clearing Instruments
- NATMAP 250K Series Mapping - GA 08/03



Scale 1:200000
 (Approximate when reproduced at A4)
 Geocentric Datum Australia 1994
 Note: the data in this map have not been projected. This may result in geometric distortion or measurement inaccuracies.

..... Date

Officer with delegated authority under Section 20 of the Environmental Protection Act 1986

Information derived from this map should be confirmed with the data custodian acknowledged by the agency acronym in the legend.

WESTERN AUSTRALIA
 WA Crown Copyright 2002