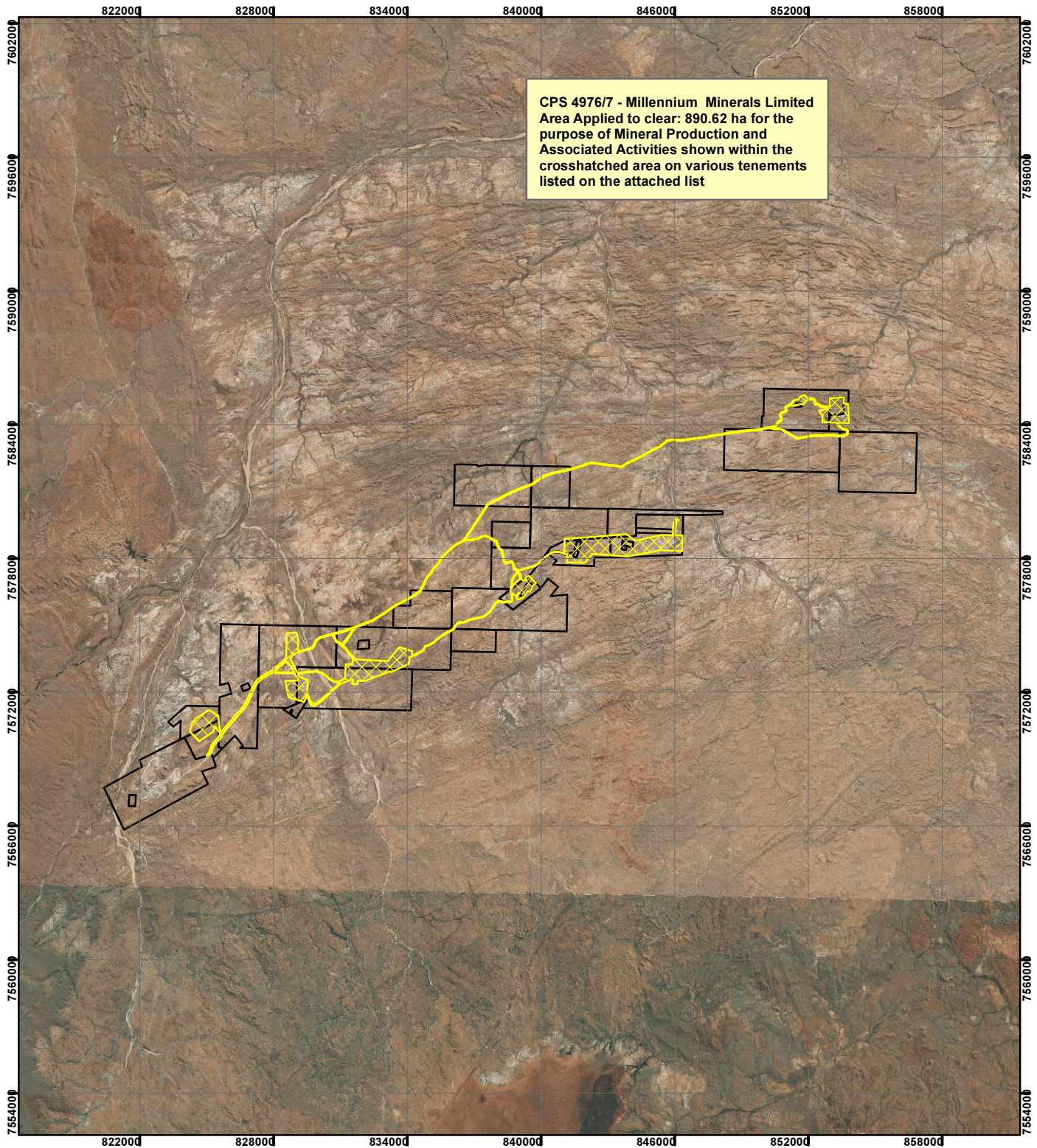


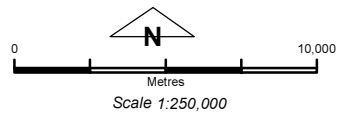
CPS 4976/7 - Millennium Minerals Limited



CPS 4976/7 - Millennium Minerals Limited
Area Applied to clear: 890.62 ha for the
purpose of Mineral Production and
Associated Activities shown within the
crosshatched area on various tenements
listed on the attached list

Legend

Yellow crosshatched area	Area Applied to clear
Black outline	Mineral Tenements
Blue line	Water
Grey line	Drainage
Black line	Boundaries
Black line	Other



Geocentric Datum Australia 1994
Note: the data in this map have not been
projected. This may result in geometric
distortion or measurement inaccuracies.

..... Date

Officer with delegated authority under Section 20 of
the Environmental Protection Act 1986

Information derived from this map should be
confirmed with the data custodian acknowledged
by the agency acronym in the legend.



Nullagine Aerial Mosaic July 2014
Noreena Downs Aerial Mosaic August 2013