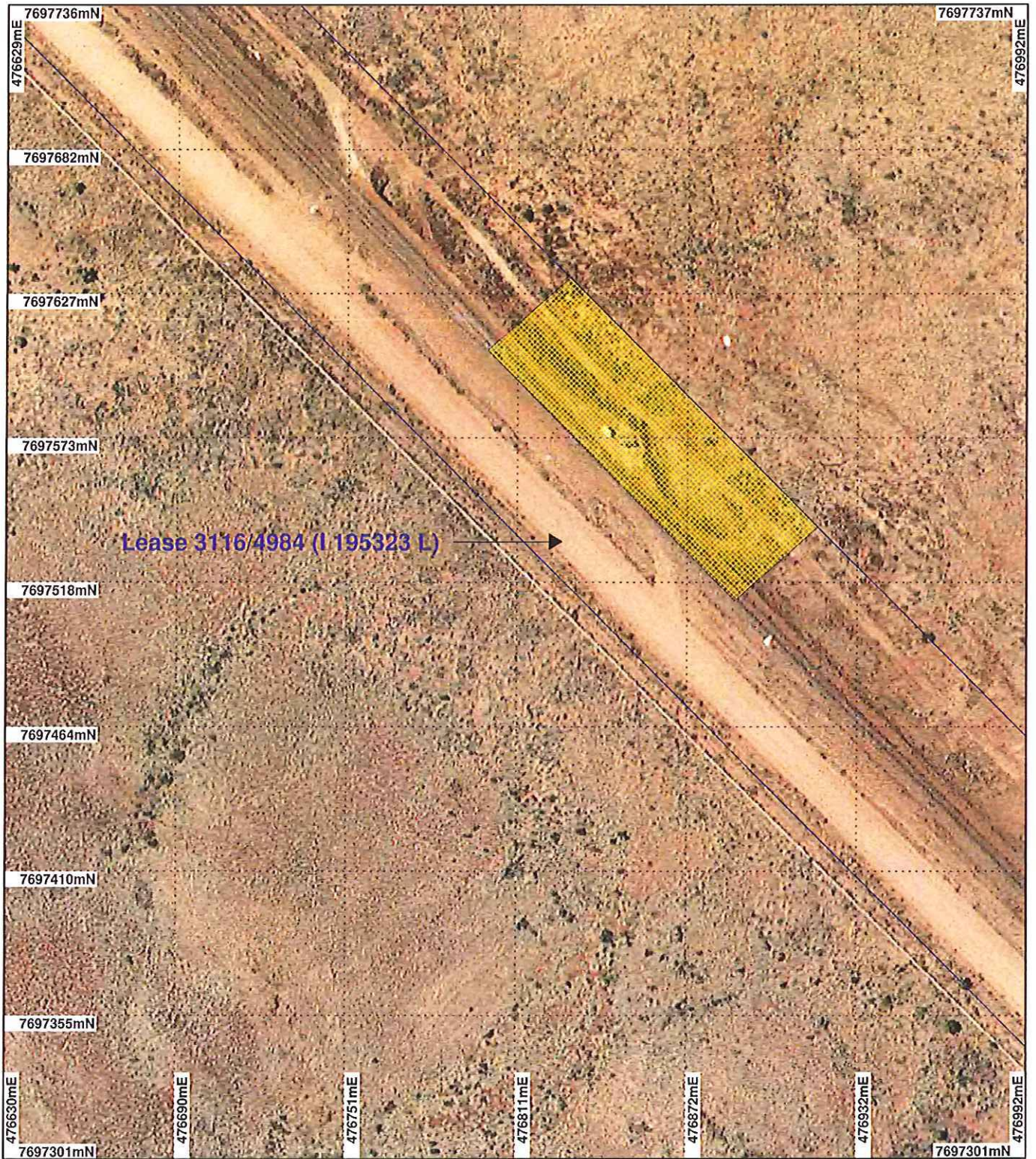


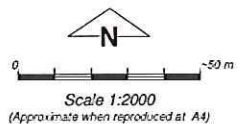
PLAN 4983/1 A



Lease 3116/4984 (I 195323 L) →

LEGEND

-  Cadastre for labelling
-  Mining Tenements
-  Clearing Instruments
-  Areas Approved to Clear
-  Damper and Extensions 50cm
-  Orthomosaic - Landgate



Geocentric Datum Australia 1994

Note: the data in this map have not been projected. This may result in geometric distortion or measurement inaccuracies.

PHIL GOREY Date 28/6/2012

Officer with delegated authority under Section 20 of the Environmental Protection Act 1986

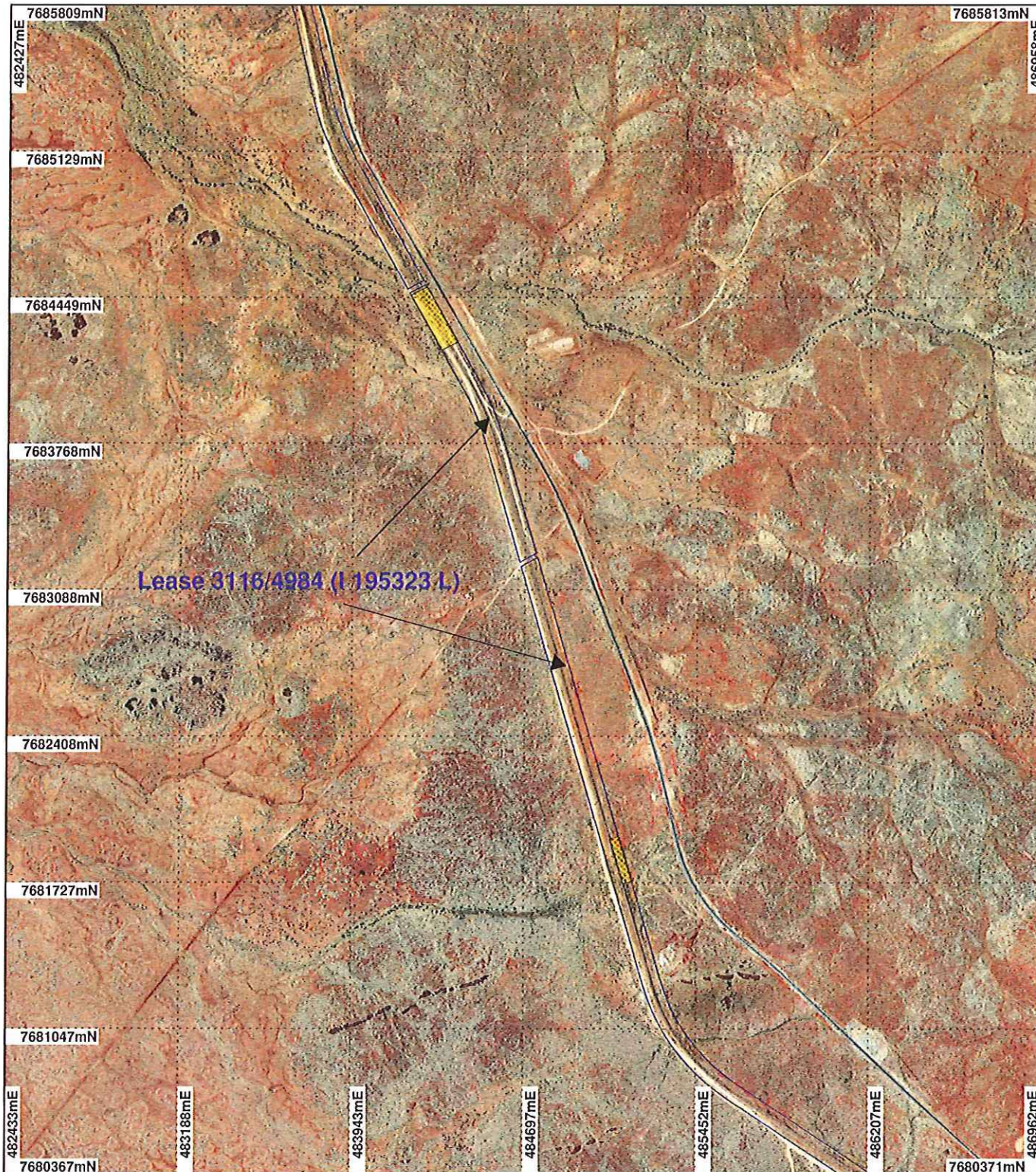
Information derived from this map should be confirmed with the data custodian acknowledged by the agency acronym in the legend.



WA Crown Copyright 2002

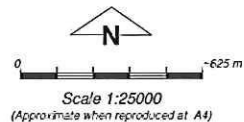
* Project Data. This data has not been quality assured. Please contact map author for details.

PLAN 4983/1 B



LEGEND

-  Cadastre for labelling
-  Mining Tenements
-  Clearing Instruments
-  Areas Approved to Clear
-  Damper and Extensions 50cm
-  Orthomosaic - Landgate



Geocentric Datum Australia 1994

Note: the data in this map have not been projected. This may result in geometric distortion or measurement inaccuracies.

PHIL GOREY

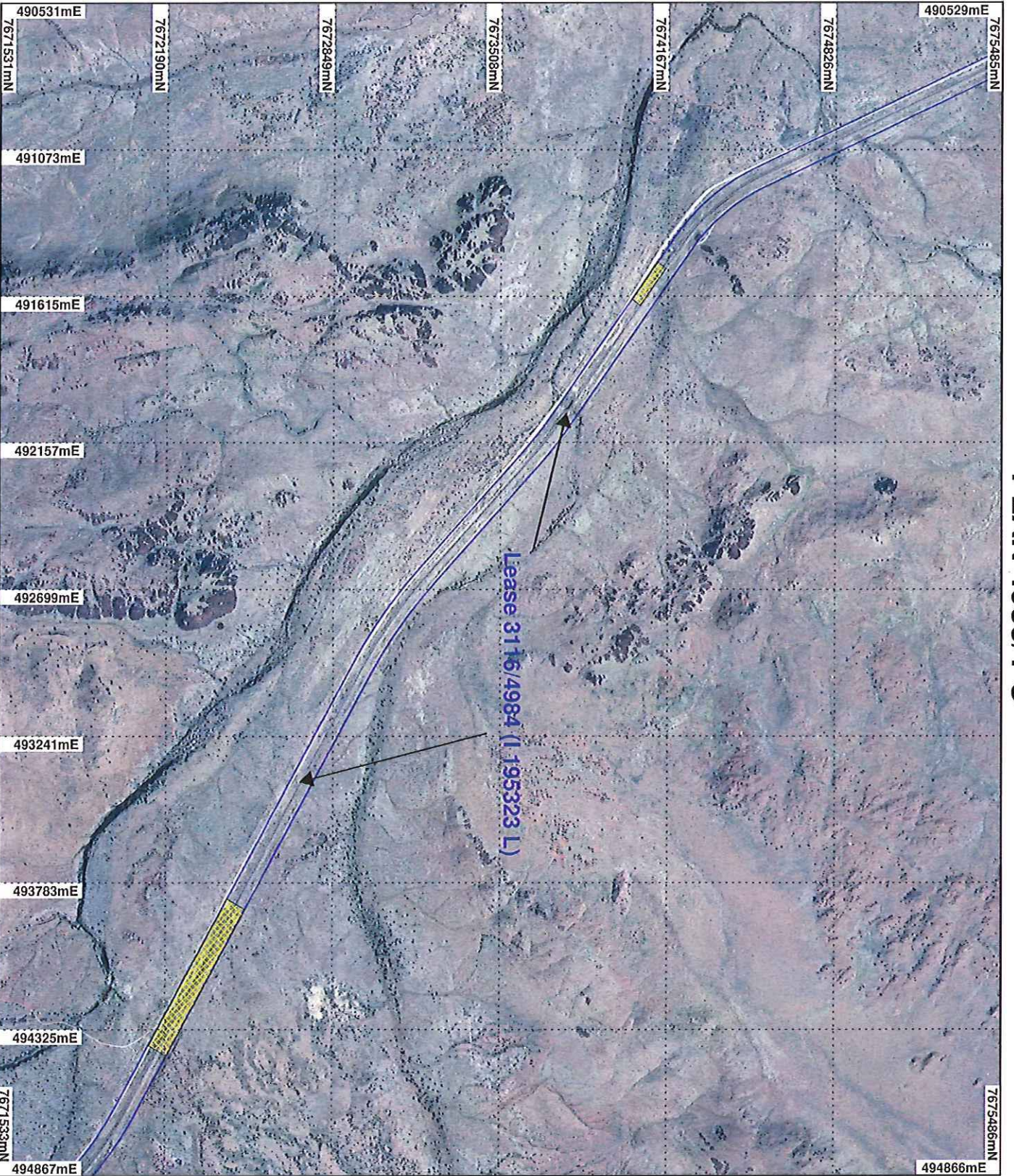
Officer with delegated authority under Section 20 of the Environmental Protection Act 1986

Information derived from this map should be confirmed with the data custodian acknowledged by the agency acronym in the legend.



WA Crown Copyright 2002

PLAN 4983/1 C



- LEGEND**
- Cadastre for labelling
 - Mining Tenements
 - Clearing Instruments
 - Areas Approved to Clear
 - Pindar Hills 1.4m Orthomosaic - Landgate 2000

* Project Data. This data has not been quality assured. Please contact map author for details.



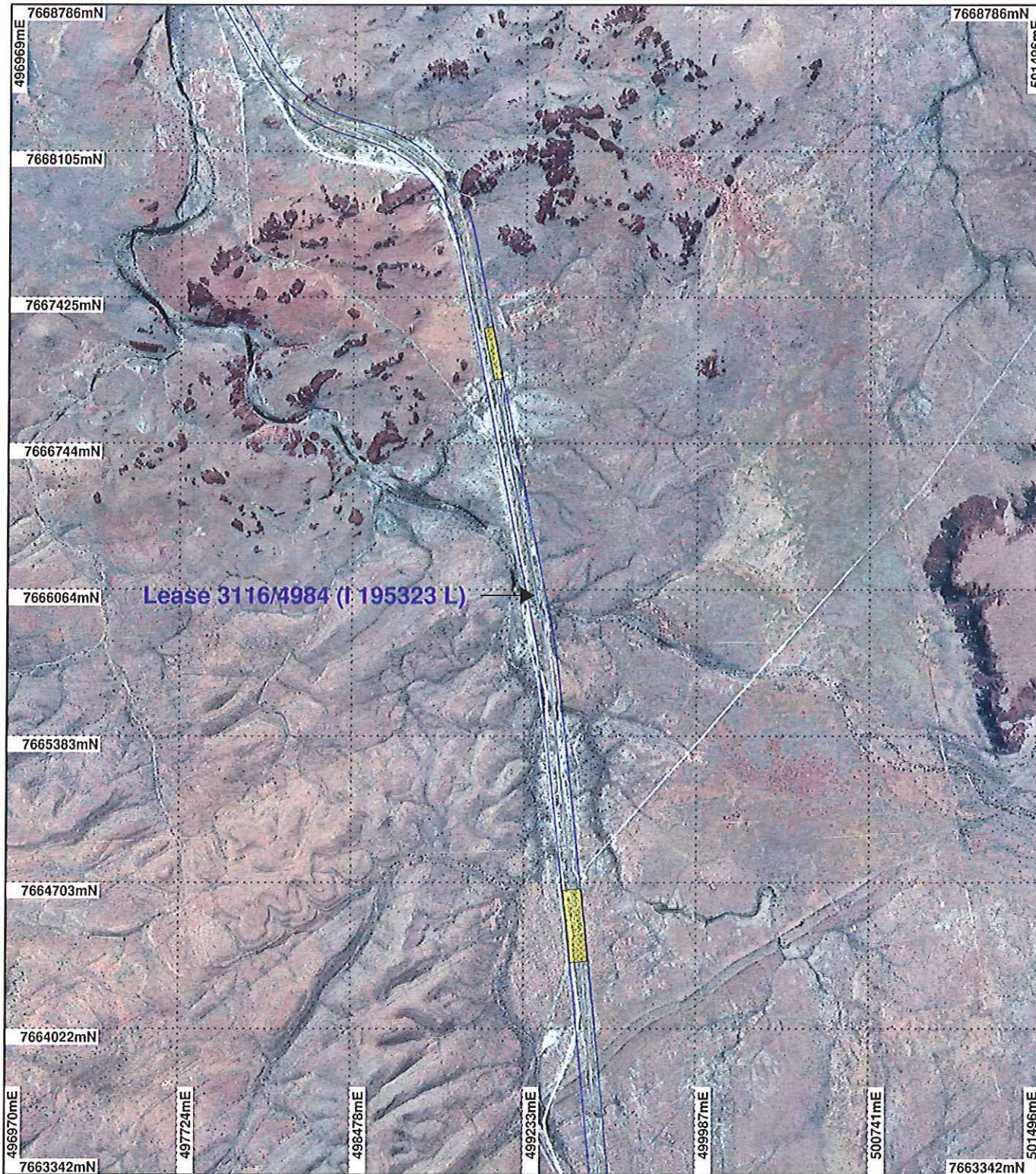
Gococentric Datum Australia 1994
 Note: the data in this map have not been projected. This may result in geometric distortion or measurement inaccuracies.

PHIL GOREV Date 23/6/2012

Officer with delegated authority under Section 20 of the Environmental Protection Act 1986
 Information derived from this map should be confirmed with the data custodian acknowledged by the agency acronym in the legend.



PLAN 4983/1 D



LEGEND

- Cadastre for labelling
- Mining Tenements
- Clearing Instruments
- Areas Approved to Clear

Pindri Hills 1.4m
Orthomosaic - Landgate 2000



0 625 m

Scale 1:25000
(Approximate when reproduced at A4)

Geocentric Datum Australia 1994
Note: the data in this map have not been projected. This may result in geometric distortion or measurement inaccuracies.

Date 23/6/2012

PHIL GOREY
Officer with delegated authority under Section 20 of the Environmental Protection Act 1986

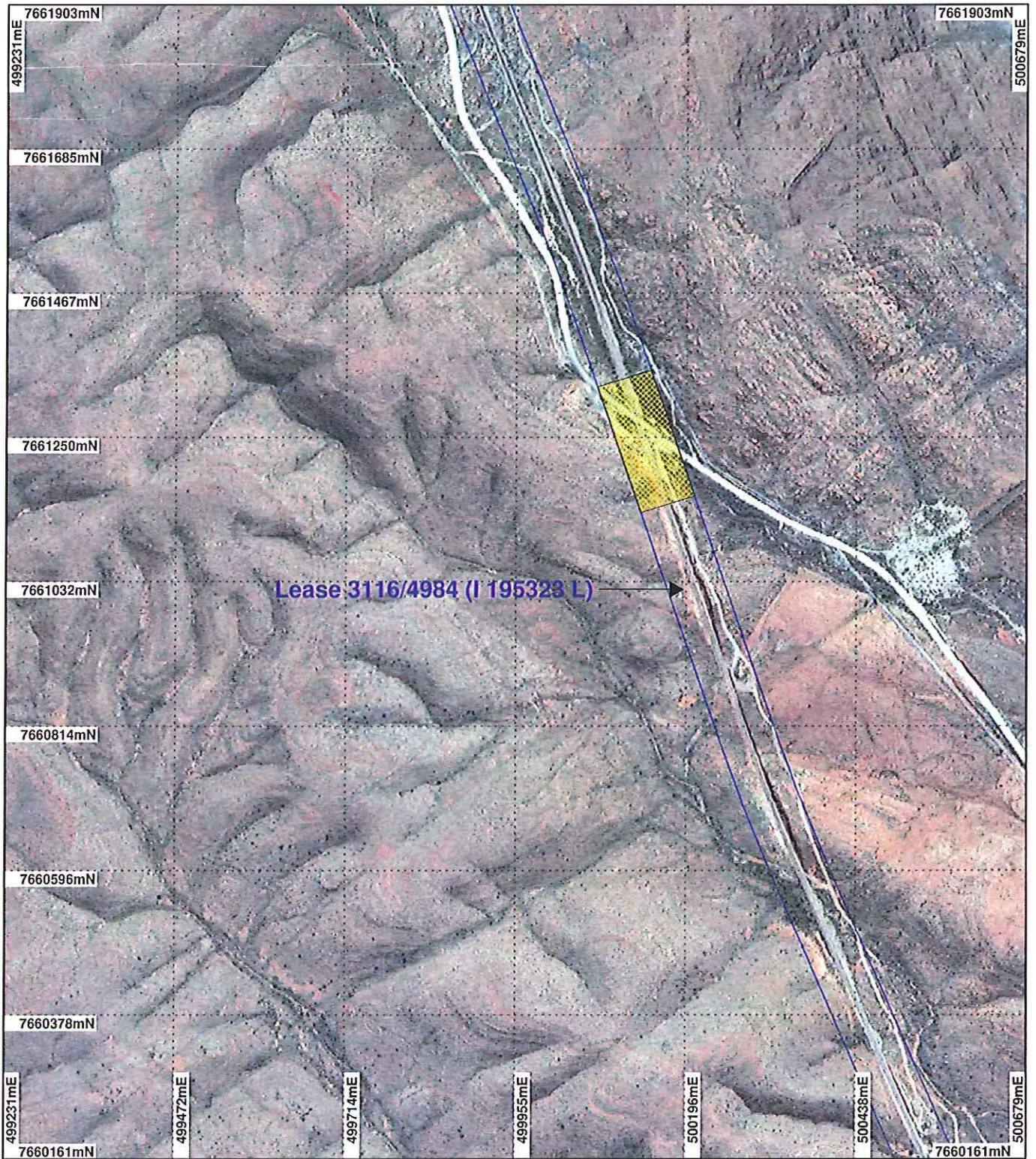
Information derived from this map should be confirmed with the data custodian acknowledged by the agency acronym in the legend.



WA Crown Copyright 2002

* Project Data. This data has not been quality assured. Please contact map author for details.

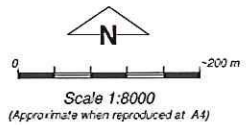
PLAN 4983/1 E



LEGEND

- Cadastre for labelling
- Mining Tenements
- Clearing Instruments
- Areas Approved to Clear

Pindri Hills 1.4m
Orthomosaic - Landgate 2000



Geocentric Datum Australia 1994

Note: the data in this map have not been projected. This may result in geometric distortion or measurement inaccuracies.

Date 28/6/2012

PHIL GOREY
Officer with delegated authority under Section 20 of the Environmental Protection Act 1986

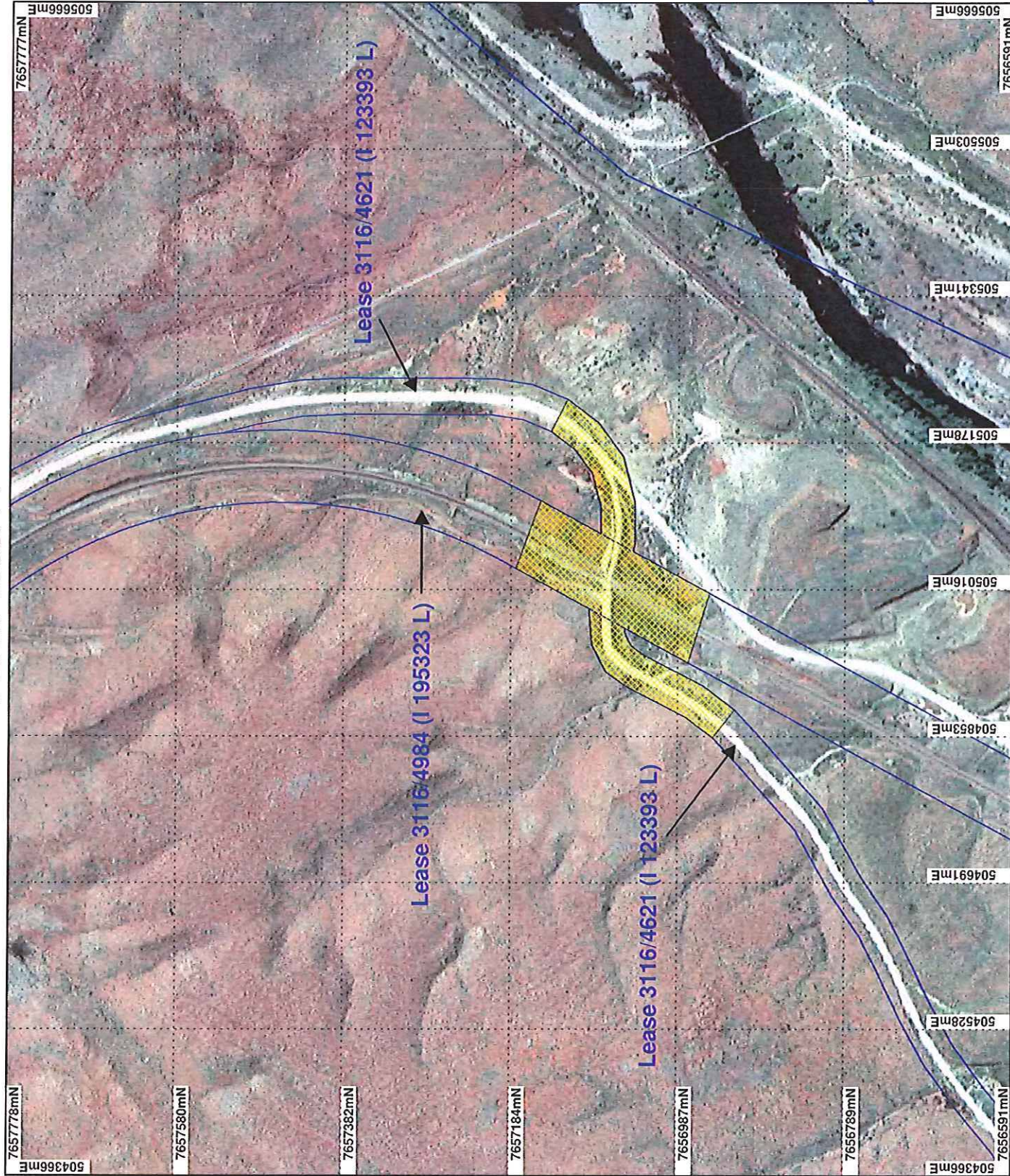
Information derived from this map should be confirmed with the data custodian acknowledged by the agency acronym in the legend.








WA Crown Copyright 2002

* Project Data. This data has not been quality assured. Please contact map author for details.

PLAN 4983/1 F



LEGEND

-  Cadastre for labelling
-  Mining Tenements
-  Clearing Instruments
-  Areas Approved to Clear
-  Cooya Pooya 1.4m Orthomosaic - Landgate 1998

* Project Data. This data has not been quality assured. Please contact map author for details.



0 150 m

Scale 1:6000

(Approximate when reproduced at A4)

Geocentric Datum Australia 1994

Note: the data in this map have not been projected. This may result in geometric distortion or measurement inaccuracies.

PHIL GOREY Date 27/6/2012

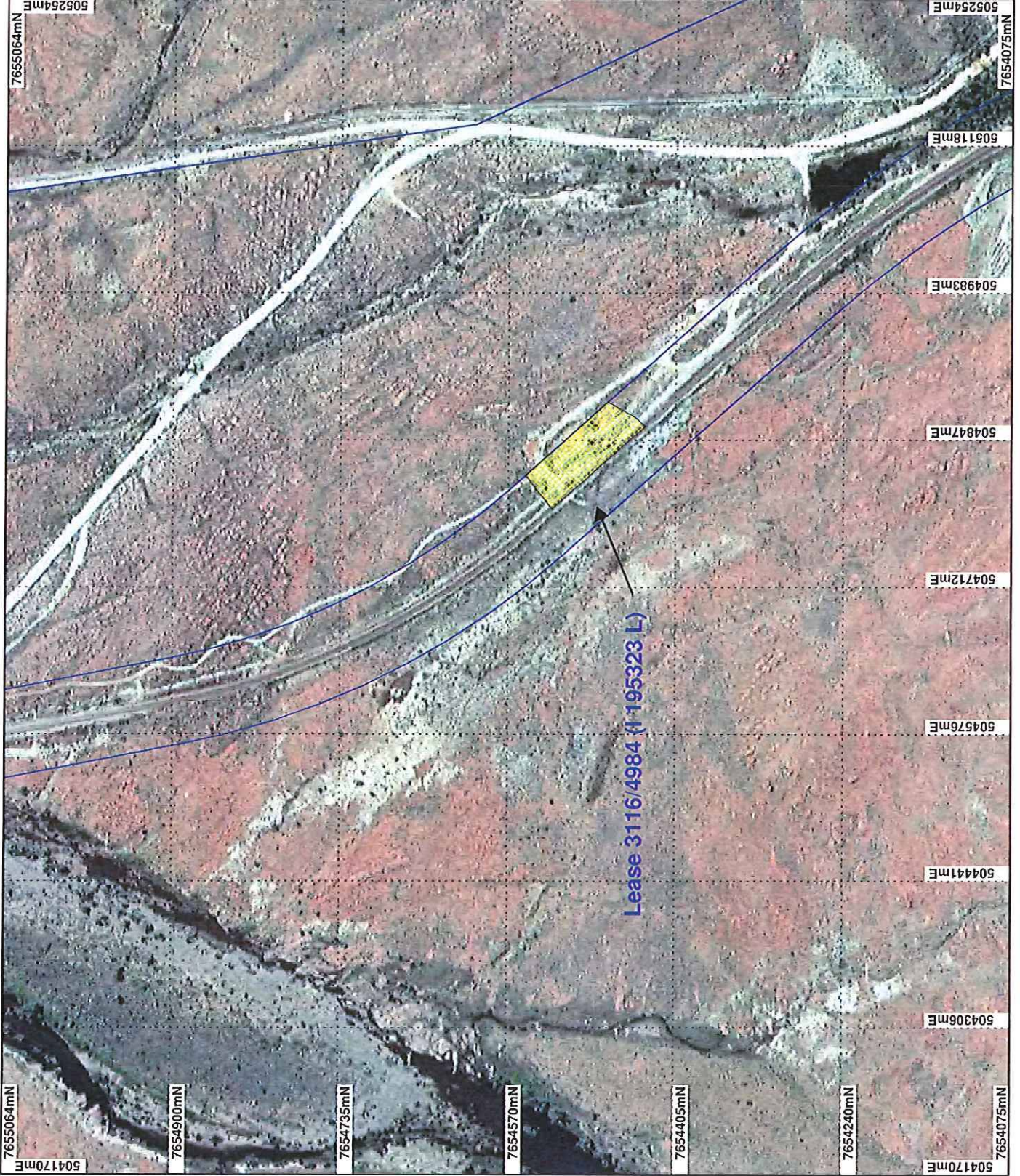
Officer with delegated authority under Section 20 of the Environmental Protection Act 1985

Information derived from this map should be confirmed with the data custodian acknowledged by the agency acronym in the legend.



WA Crown Copyright 2002

PLAN 4983/1 G



LEGEND

- Cadastre for labelling
- Mining Tenements
- Clearing Instruments
- Areas Approved to Clear
- Cooya Pooya 1.4m Orthomosaic - Landgate 1998

* Project Data. This data has not been quality assured. Please contact map author for details.



0 125 m

Scale 1:5000

(Approximate when reproduced at A4)

Geocentric Datum Australia 1994

Note: the data in this map have not been projected. This may result in geometric distortion or measurement inaccuracies.

PHIL GOREY Date 20/6/2012

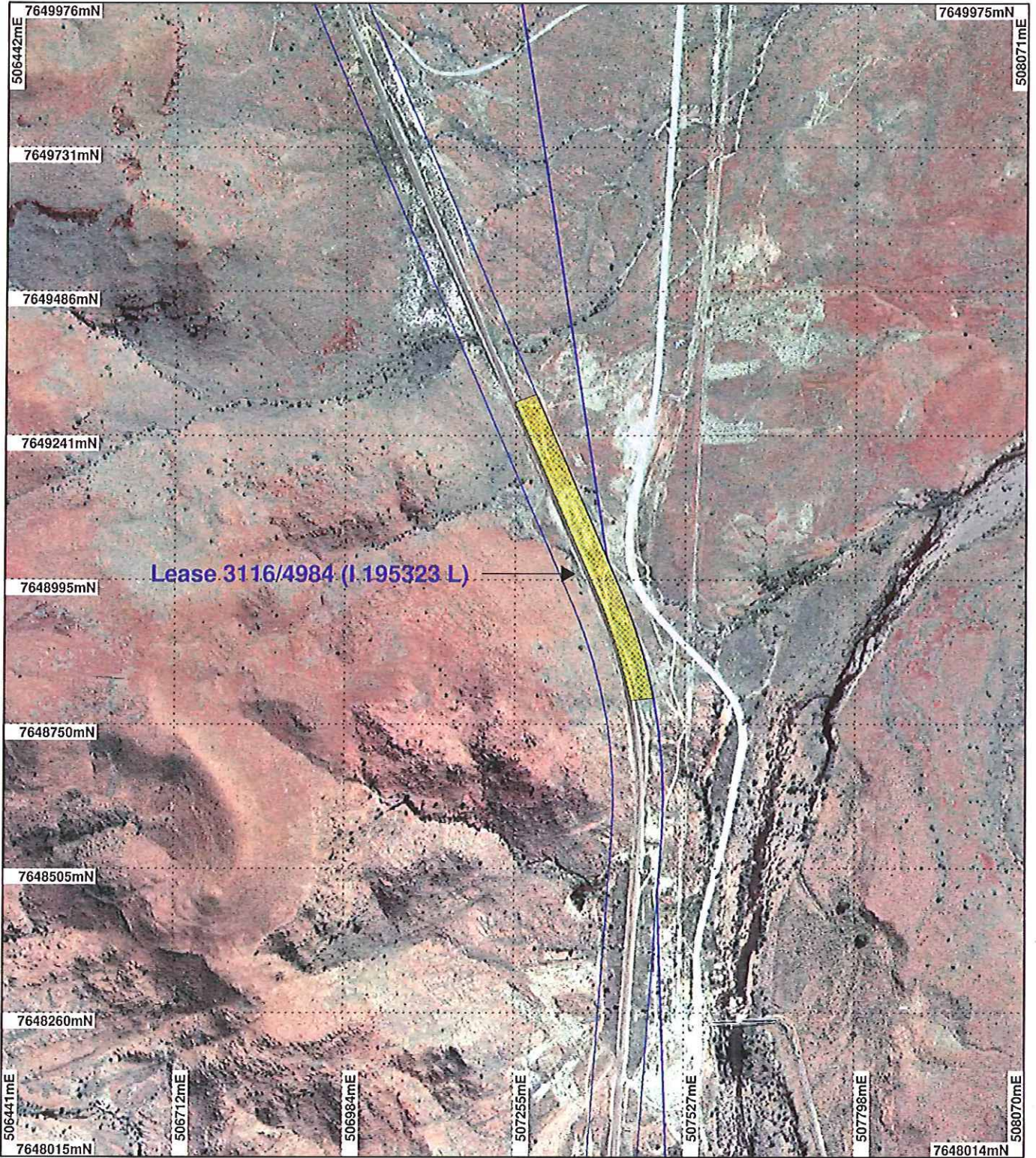
Information derived from this map should be confirmed with the data custodian acknowledged by the agency acronym in the legend.

Information derived from this map should be confirmed with the data custodian acknowledged by the agency acronym in the legend.



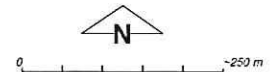
WA Govn Copyright 2002

PLAN 4983/1 H



LEGEND

-  Cadastre for labelling
-  Mining Tenements
-  Clearing Instruments
-  Areas Approved to Clear
-  Cooya Pooya 1.4m Orthomosaic - Landgate



Scale 1:9000
(Approximate when reproduced at A4)

Geocentric Datum Australia 1994

Note: the data in this map have not been projected. This may result in geometric distortion or measurement inaccuracies.

 Date 28/6/17
PHIL GOREY

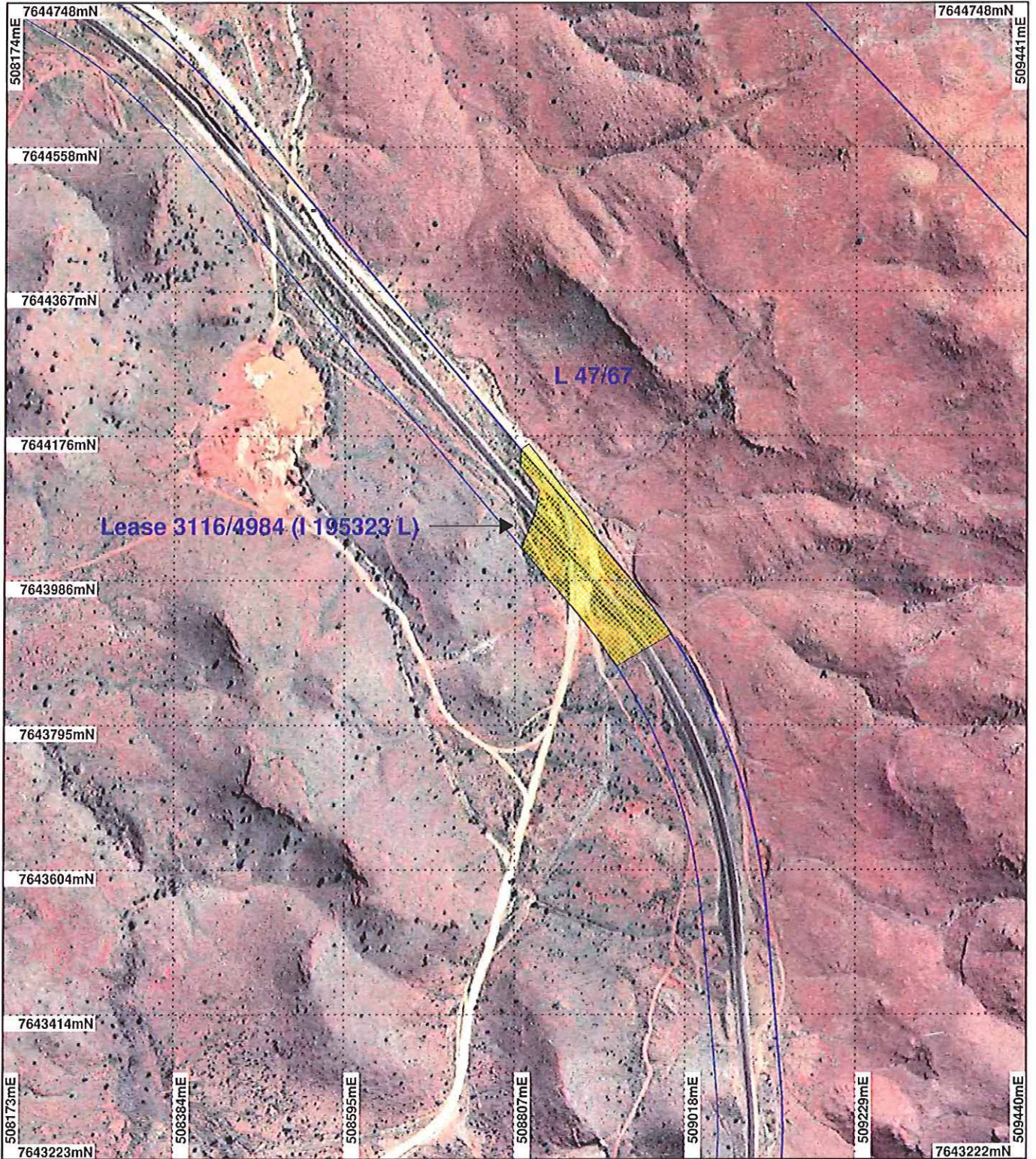
Officer with delegated authority under Section 20 of the Environmental Protection Act 1986

Information derived from this map should be confirmed with the data custodian acknowledged by the agency acronym in the legend.



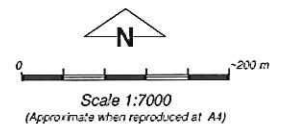
WA Crown Copyright 2002

PLAN 4983/1 I



LEGEND

-  Cadastre for labelling
 -  Mining Tenements
 -  Clearing Instruments
 -  Areas Approved to Clear
- Cooya Pooya 1.4m
Orthomosaic - Landgate



Geocentric Datum Australia 1994

Note: the data in this map have not been projected. This may result in geometric distortion or measurement inaccuracies.

PHIL GOREY

Officer with delegated authority under Section 20 of the Environmental Protection Act 1986

Information derived from this map should be confirmed with the data custodian acknowledged by the agency acronym in the legend.



WA Crown Copyright 2002

PLAN 4983/1 J



LEGEND

- Cadastre for labelling
- Mining Tenements
- Clearing Instruments
- Areas Approved to Clear
- Cocya Pooya 1.4m
- Orthomosaic - Landgate



0 200 m

Scale 1:7000

(Approximate when reproduced at A4)

Geocentric Datum Australia 1994

Note: the data in this map have not been projected. This may result in geometric distortion or measurement inaccuracies.

Date 28/6/2012
PHIL GOREY

Officer with delegated authority under Section 20 of the Environmental Protection Act 1986

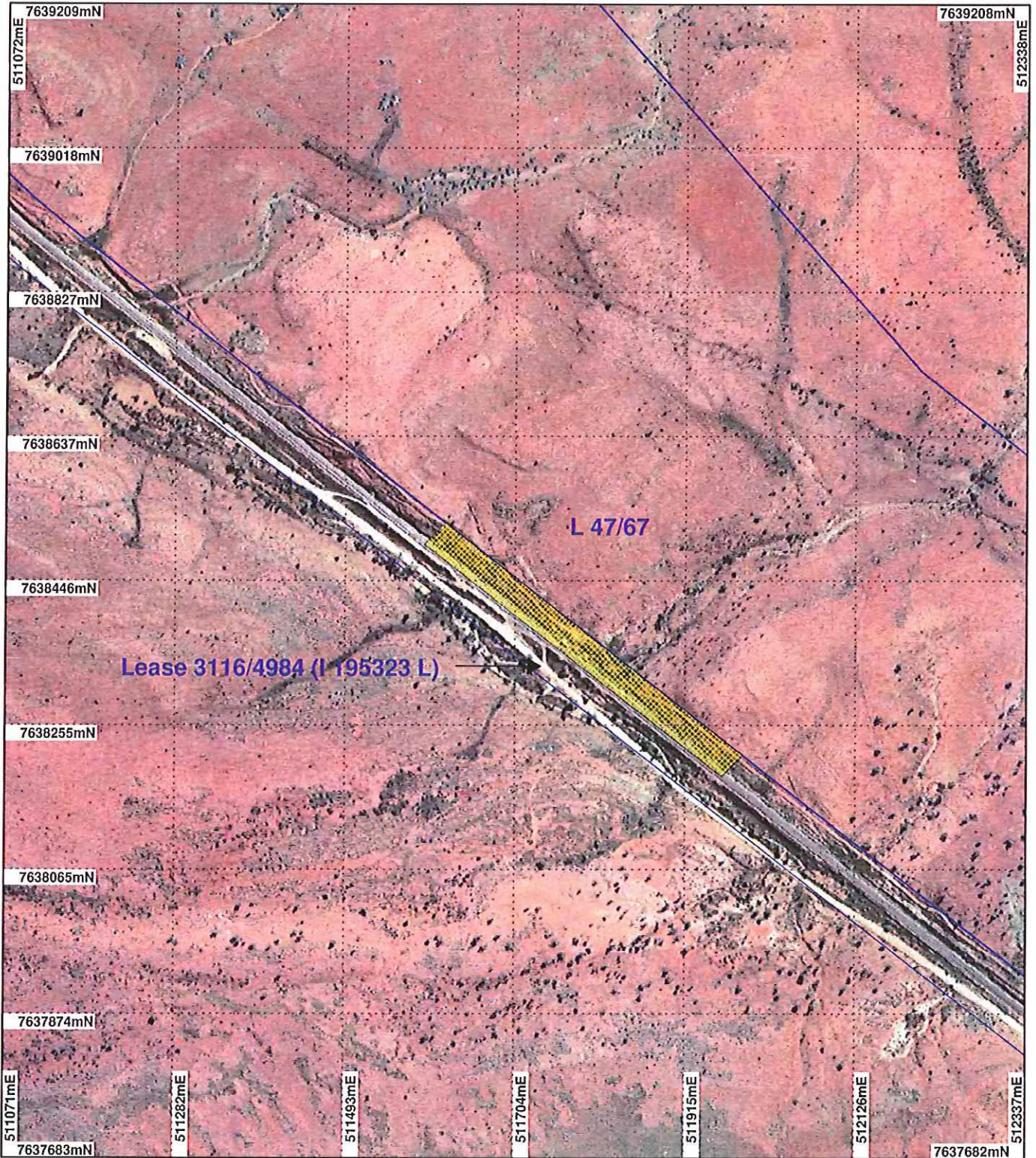
Information derived from this map should be confirmed with the data custodian acknowledged by the agency acronym in the legend.



WA Crown Copyright 2002

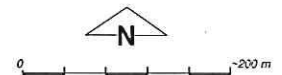
* Project Data. This data has not been quality assured. Please contact map author for details.

PLAN 4983/1 K



LEGEND

-  Cadastre for labelling
-  Mining Tenements
-  Clearing Instruments
-  Areas Approved to Clear
- Cooya Pooya 1.4m
- Orthomosaic - Landgate



Scale 1:7000

(Approximate when reproduced at A4)

Geocentric Datum Australia 1994

Note: the data in this map have not been projected. This may result in geometric distortion or measurement inaccuracies.

PHIL GOREY

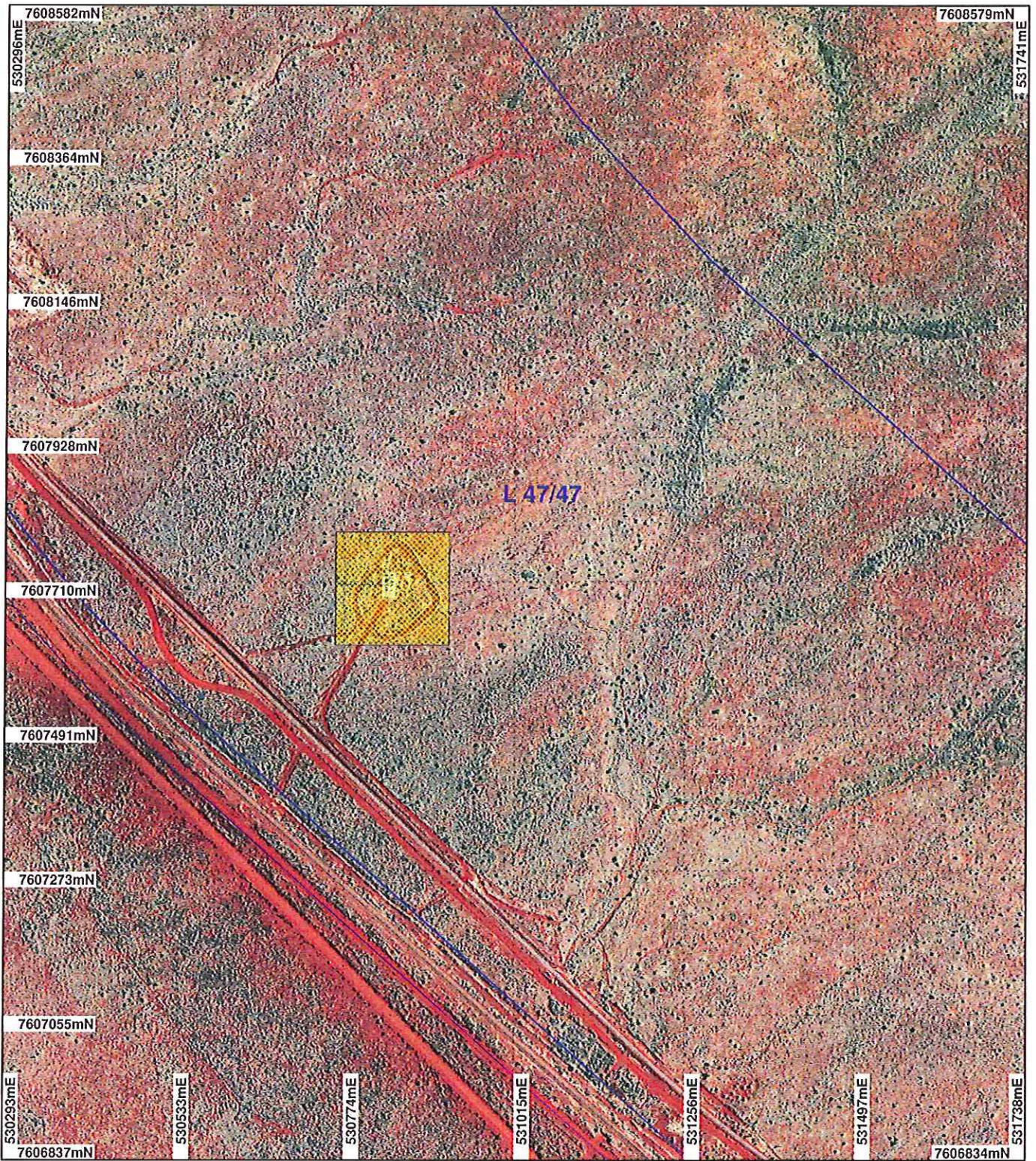
Officer with delegated authority under Section 20 of the Environmental Protection Act 1986

Information derived from this map should be confirmed with the data custodian acknowledged by the agency acronym in the legend.



WA Crown Copyright 2002

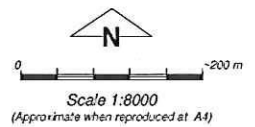
PLAN 4983/1 L



LEGEND

-  Cadastre for labelling
-  Mining Tenements
-  Clearing Instruments
-  Areas Approved to Clear

Millstream 80cm Orthomosaic
- Landgate 2007



Geocentric Datum Australia 1994

Note: the data in this map have not been projected. This may result in geometric distortion or measurement inaccuracies.

 Date 28/6/2012
PHIL GOREY

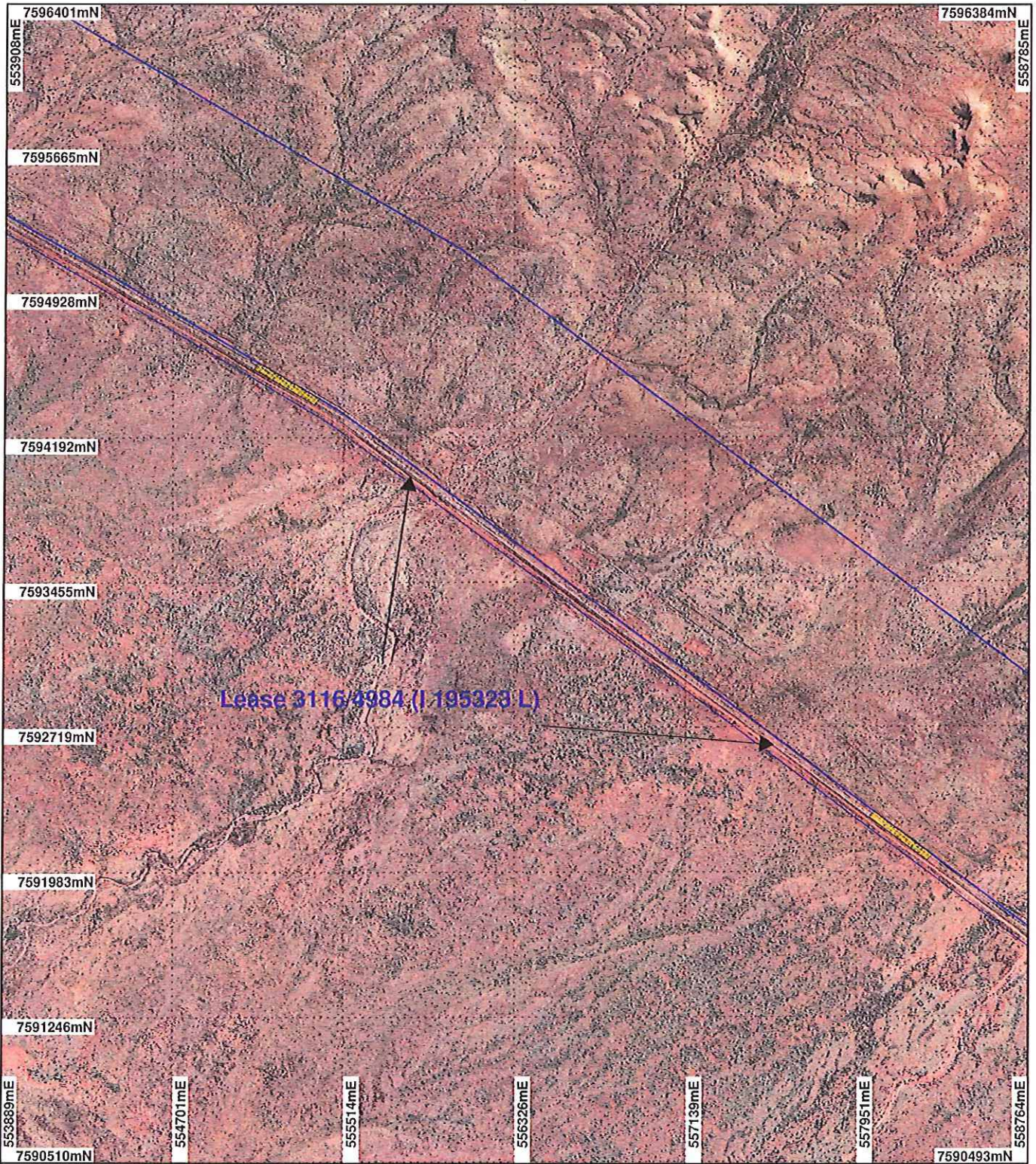
Officer with delegated authority under Section 20 of the Environmental Protection Act 1986

Information derived from this map should be confirmed with the data custodian acknowledged by the agency acronym in the legend.



WA Crown Copyright 2002

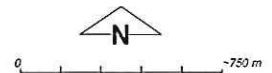
PLAN 4983/1 M



LEGEND

- Cadastre for labelling
- Mining Tenements
- Clearing Instruments
- Areas Approved to Clear

Mount Billroth 1.4m
Orthomosaic - Landgate 2000



Scale 1:27000

(Approximate when reproduced at A4)

Geocentric Datum Australia 1994

Note: the data in this map have not been projected. This may result in geometric distortion or measurement inaccuracies.

Phil Gorey
PHIL GOREY

Date 20/6/2012

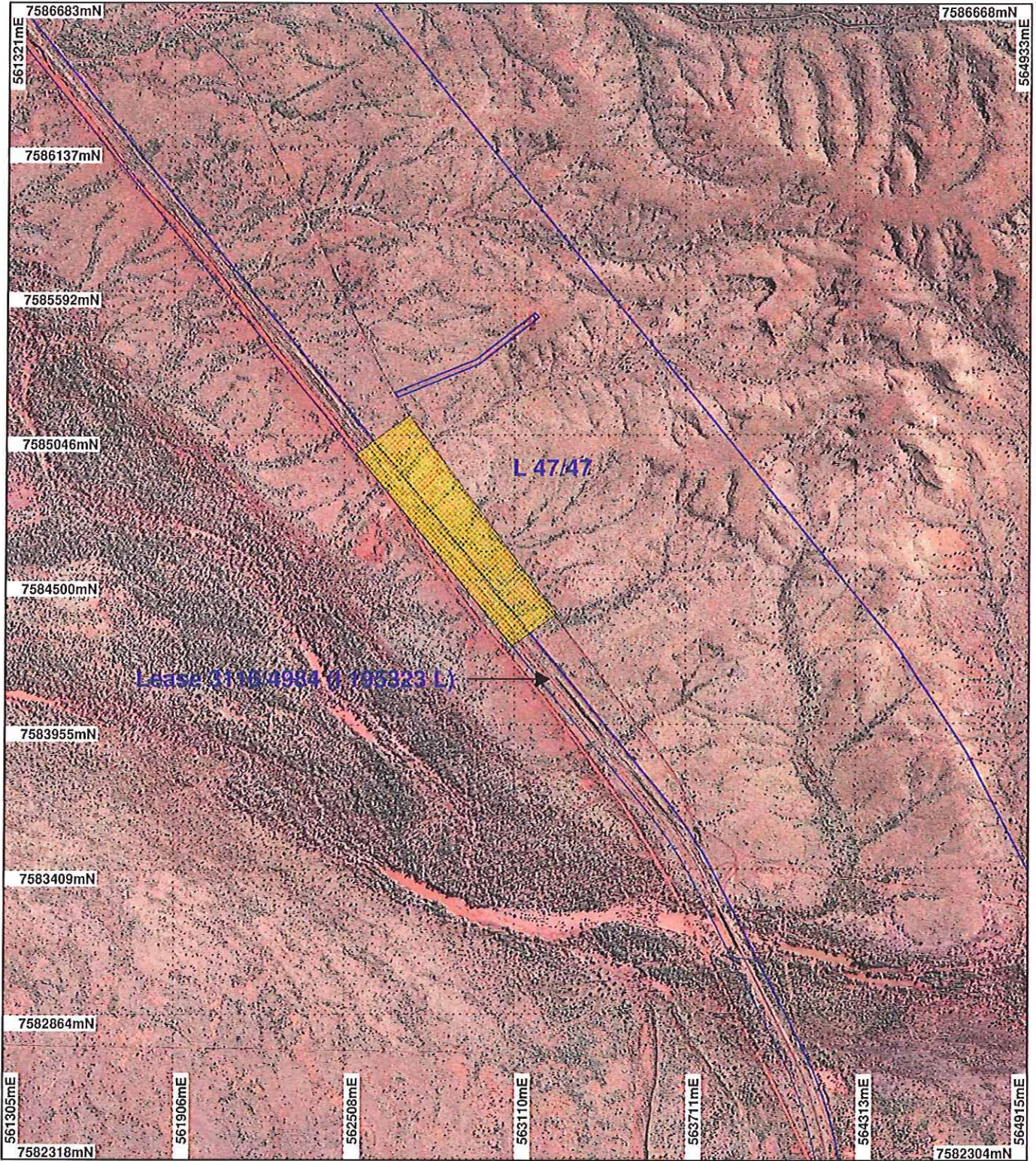
Officer with delegated authority under Section 20 of the Environmental Protection Act 1986

Information derived from this map should be confirmed with the data custodian acknowledged by the agency acronym in the legend.



WA Crown Copyright 2002


PLAN 4983/1 N



LEGEND

- Cadastre for labelling
- Mining Tenements
- Clearing Instruments
- Areas Approved to Clear

Mount Billroth 1.4m
Orthomosaic - Landgate 2000


 0 500 m
 Scale 1:20000
 (Approximate when reproduced at A4)

Geocentric Datum Australia 1994

Note: the data in this map have not been projected. This may result in geometric distortion or measurement inaccuracies.

PHIL GOREY

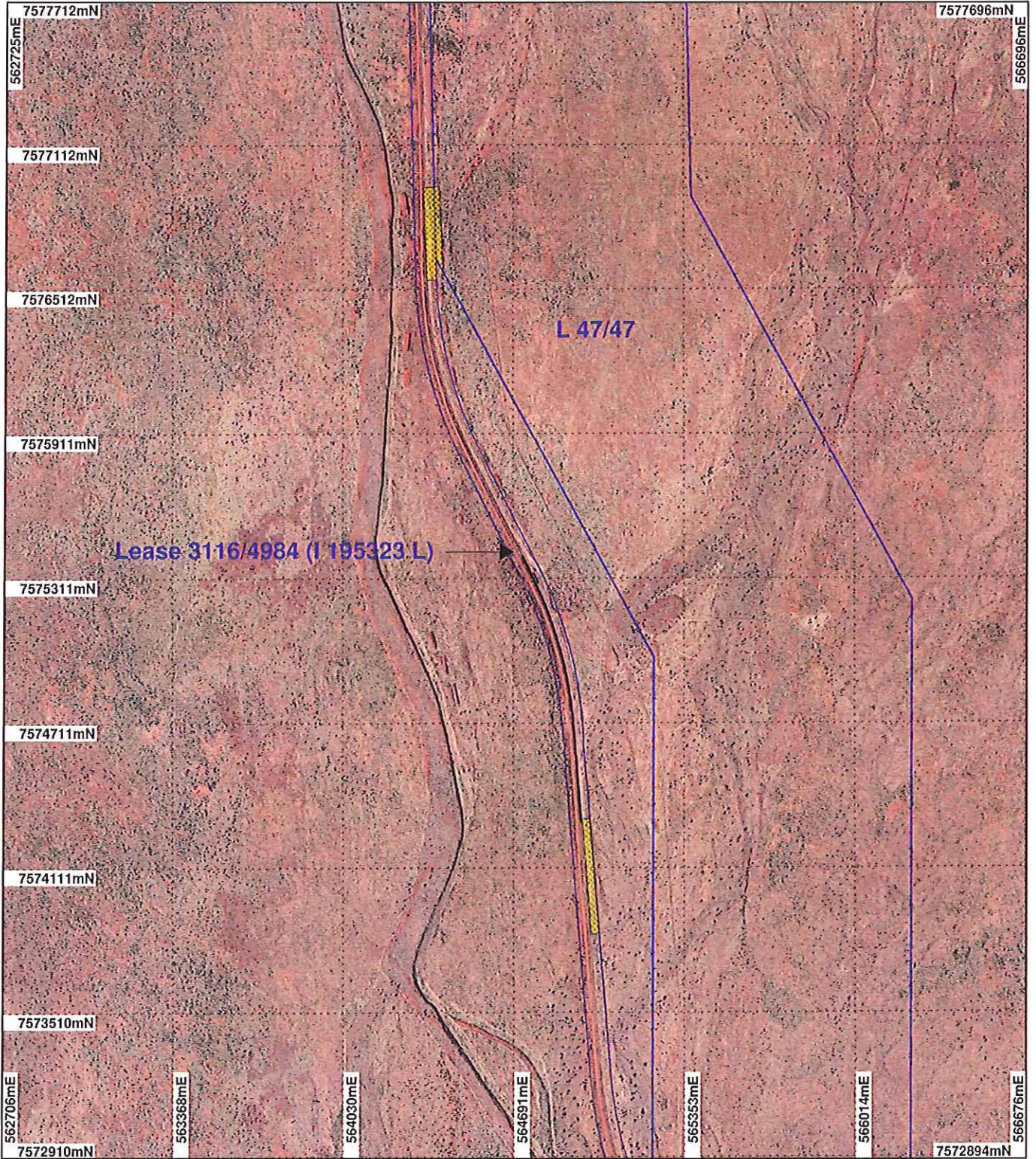
Officer with delegated authority under Section 20 of the Environmental Protection Act 1986

Information derived from this map should be confirmed with the data custodian acknowledged by the agency acronym in the legend.



WA Crown Copyright 2002

PLAN 4983/1 O



LEGEND

- Cadastre for labelling
- Mining Tenements
- Clearing Instruments
- Areas Approved to Clear

Mount Billroth 1.4m
Orthomosaic - Landgate 2000



Scale 1:22000

(Approximate when reproduced at A4)

Geocentric Datum Australia 1994

Note: the data in this map have not been projected. This may result in geometric distortion or measurement inaccuracies.

[Signature] Date 28/6/2017

PHIL GOREY
Officer with delegated authority under Section 20 of the Environmental Protection Act 1986

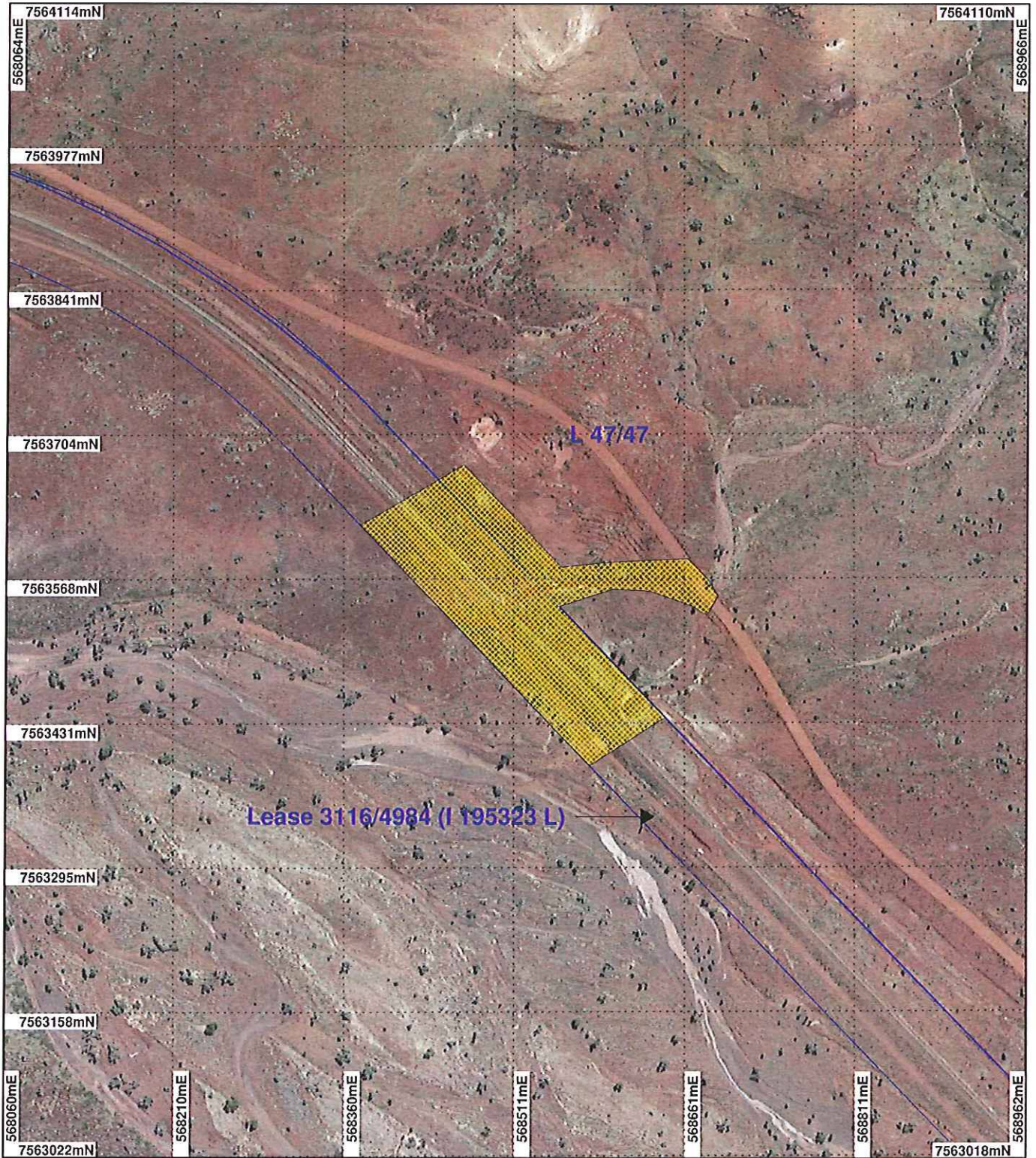
Information derived from this map should be confirmed with the data custodian acknowledged by the agency acronym in the legend.



WA Crown Copyright 2002

* Project Data. This data has not been quality assured. Please contact map author for details.

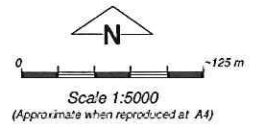
PLAN 4983/1 P



LEGEND

- Cadastre for labelling
- Mining Tenements
- Clearing Instruments
- Areas Approved to Clear

Mcrae 50cm Orthomosaic - Landgate 2004



Geocentric Datum Australia 1994

Note: the data in this map have not been projected. This may result in geometric distortion or measurement inaccuracies.

Phil Gorey Date *29/6/2012*
 PHIL GOREY

Officer with delegated authority under Section 20 of the Environmental Protection Act 1986

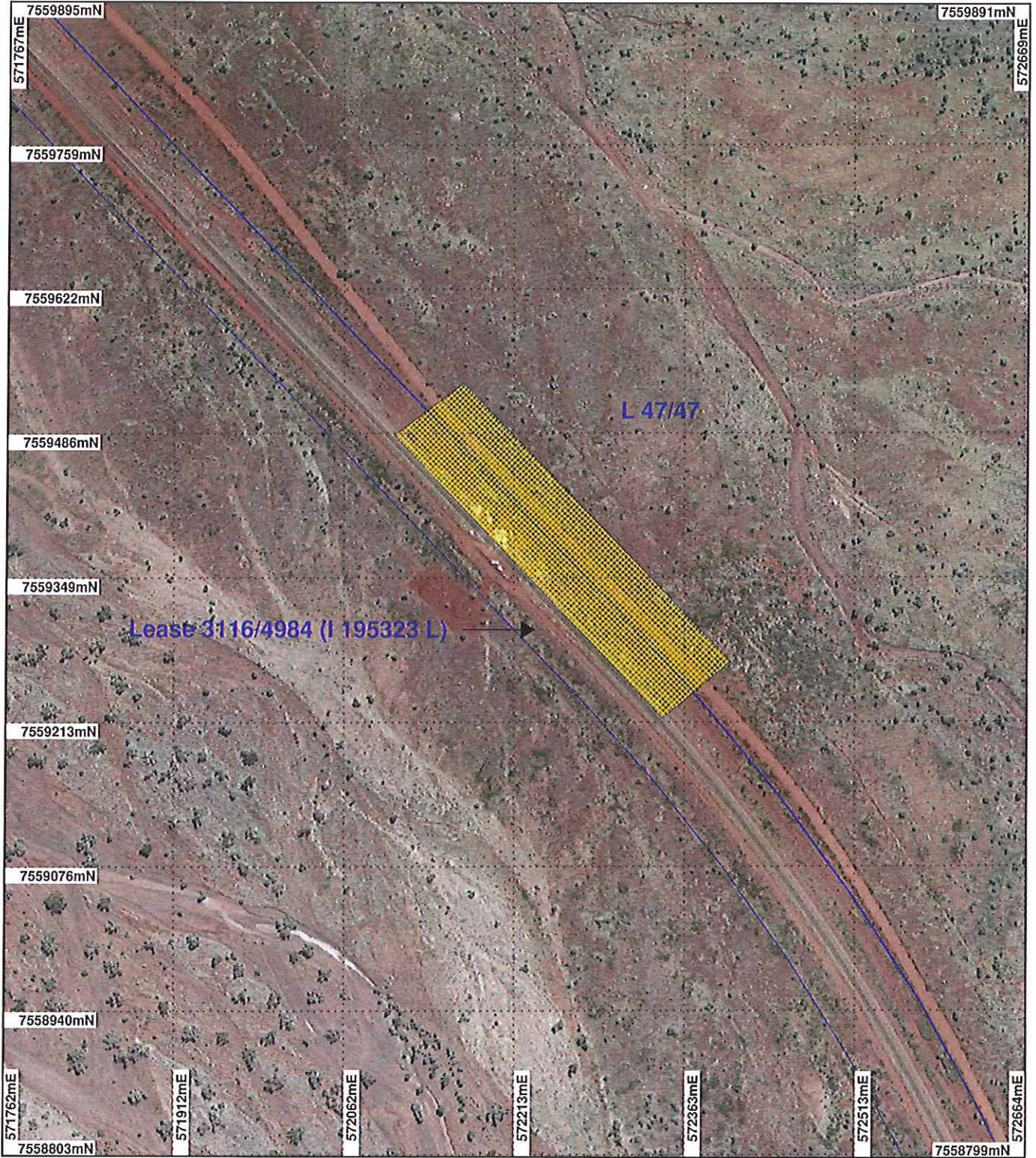
Information derived from this map should be confirmed with the data custodian acknowledged by the agency acronym in the legend.



WA Crown Copyright 2002

* Project Data. This data has not been quality assured. Please contact map author for details.

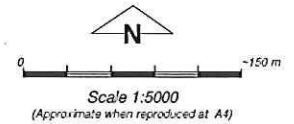
PLAN 4983/1 Q



LEGEND

- Cadastre for labelling
- Mining Tenements
- Clearing Instruments
- Areas Approved to Clear

Mcaee 50cm Orthomosaic -
Landgate 2004



Geocentric Datum Australia 1994

Note: the data in this map have not been projected. This may result in geometric distortion or measurement inaccuracies.

Phil Gorey Date *28/6/2012*

PHIL GOREY
Officer with delegated authority under Section 20 of the Environmental Protection Act 1986

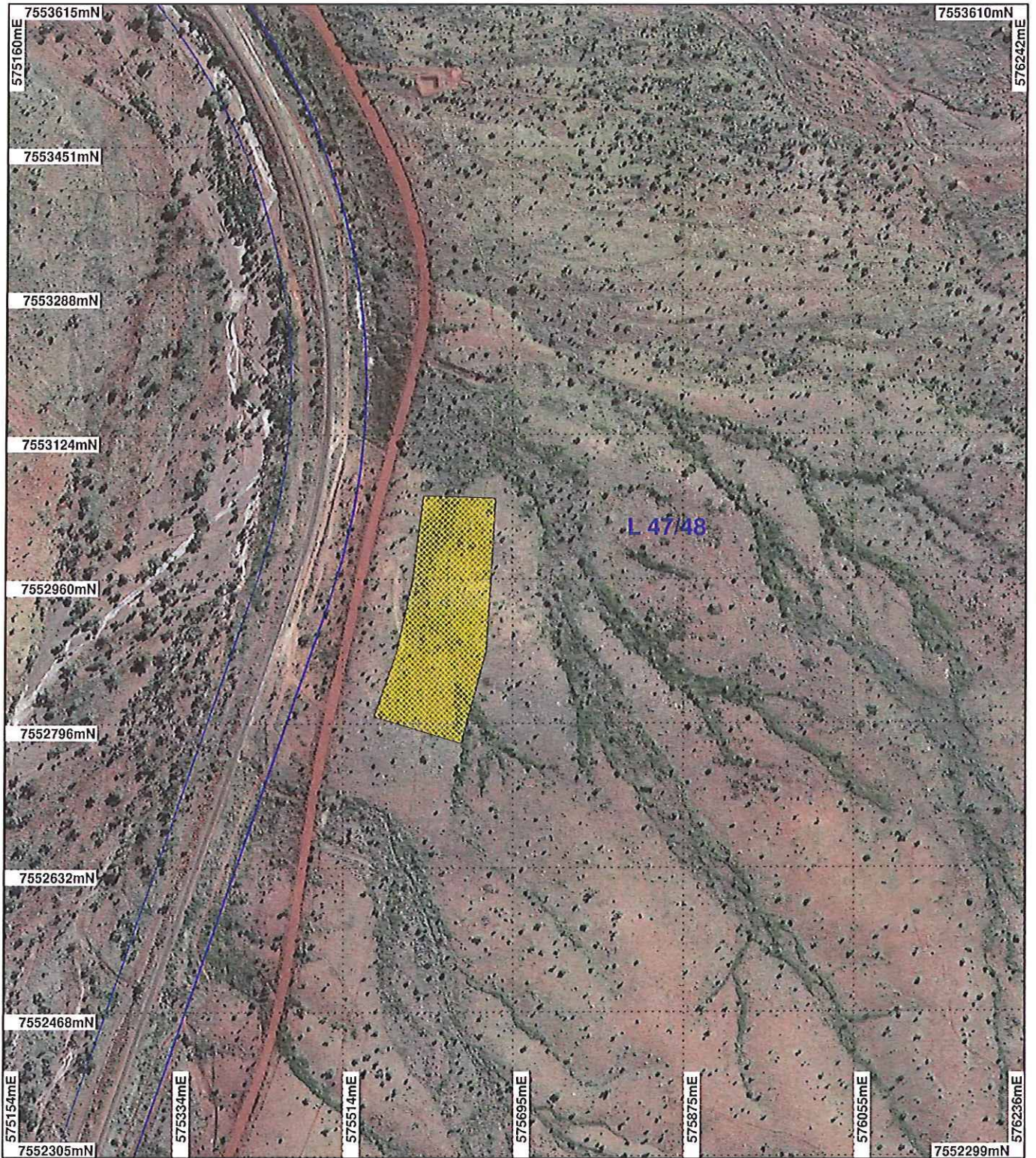
Information derived from this map should be confirmed with the data custodian acknowledged by the agency acronym in the legend.



WA Crown Copyright 2002

* Project Data. This data has not been quality assured. Please contact map author for details.

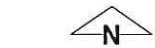
PLAN 4983/1 R



LEGEND

-  Cadastre for labelling
-  Mining Tenements
-  Clearing Instruments
-  Areas Approved to Clear

Mcrac 50cm Orthomosaic -
Landgate 2004



0 ~150 m

Scale 1:6000
(Approximate when reproduced at A4)

Geocentric Datum Australia 1994

Note: the data in this map have not been projected. This may result in geometric distortion or measurement inaccuracies.

 Date 28/6/2012
PHIL GOREY

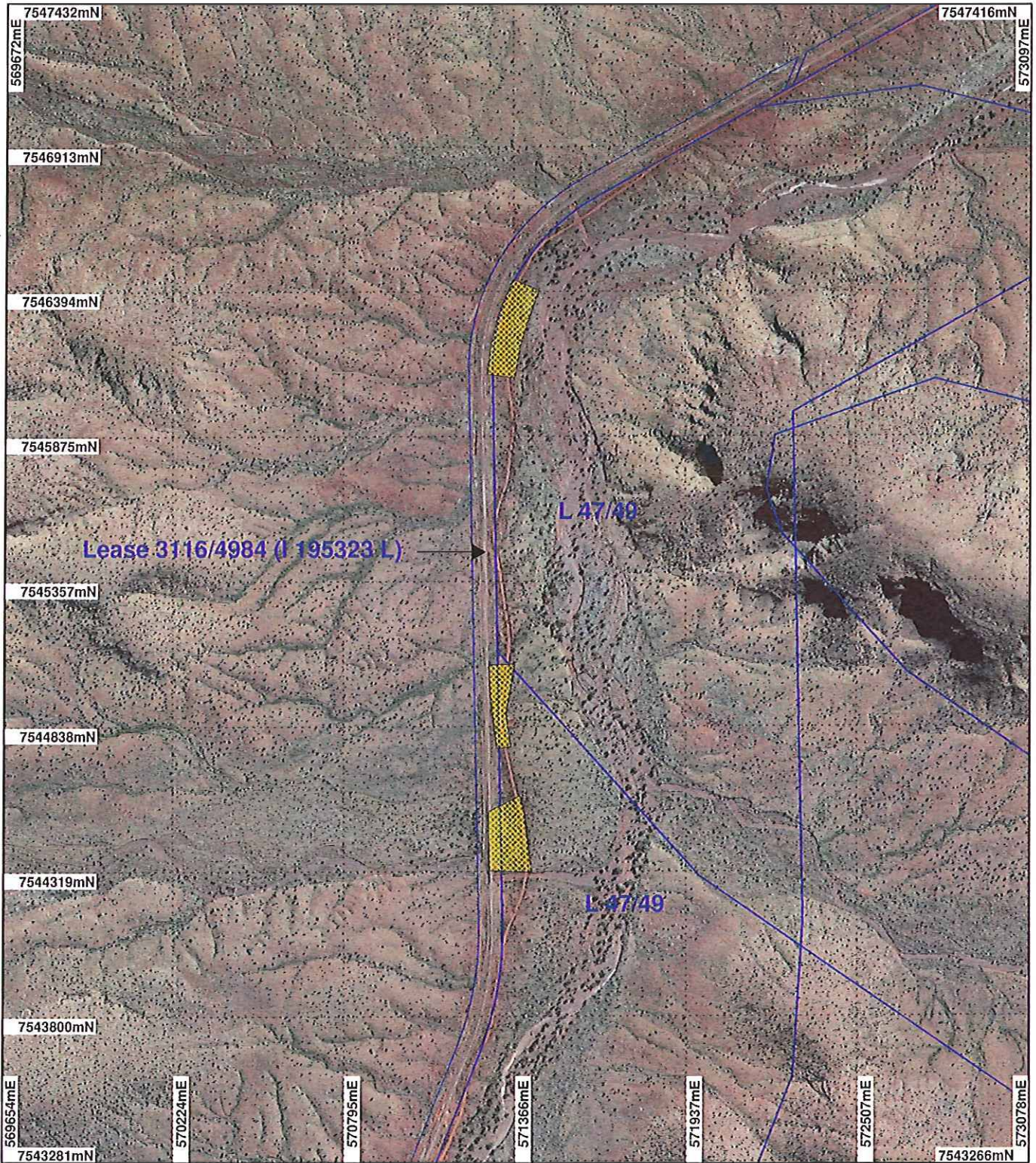
Officer with delegated authority under Section 20 of
the Environmental Protection Act 1986

Information derived from this map should be
confirmed with the data custodian acknowledged
by the agency acronym in the legend.



WIA Crown Copyright 2002

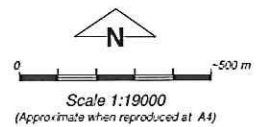
PLAN 4983/1 S



LEGEND

- Cadastre for labelling
- Mining Tenements
- Clearing Instruments
- Areas Approved to Clear

Mcrae 50cm Orthomosaic -
Landgate 2004



Geocentric Datum Australia 1994

Note: the data in this map have not been projected. This may result in geometric distortion or measurement inaccuracies.

PHIL GOREY

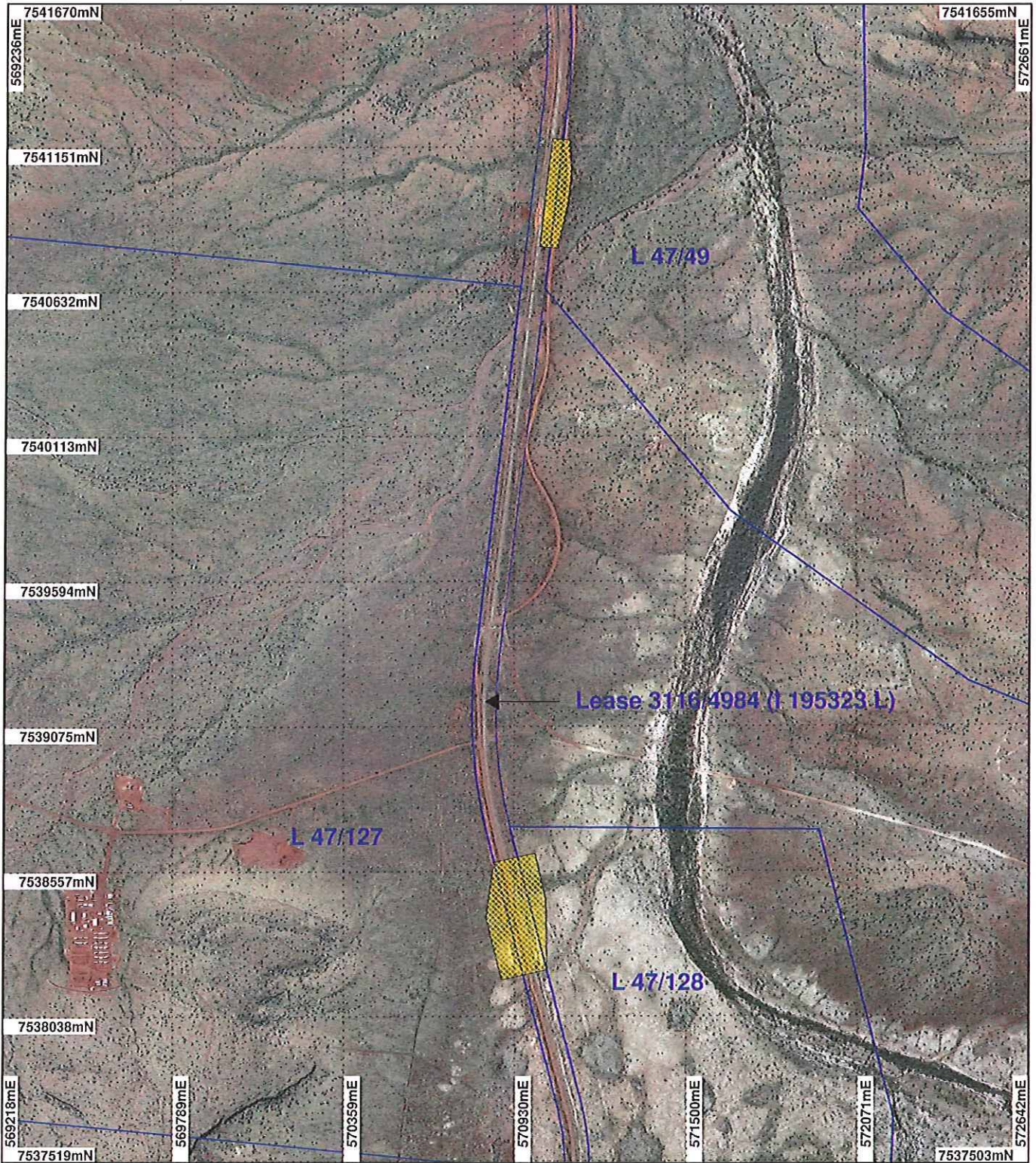
Officer with delegated authority under Section 20 of the Environmental Protection Act 1986

Information derived from this map should be confirmed with the data custodian acknowledged by the agency acronym in the legend.



WA Crown Copyright 2002

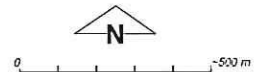
PLAN 4983/1 T



LEGEND

- Cadastre for labelling
- Mining Tenements
- Clearing Instruments
- Areas Approved to Clear

Mcræ 50cm Orthomosaic - Landgate 2004



Geocentric Datum Australia 1994

Note: the data in this map have not been projected. This may result in geometric distortion or measurement inaccuracies.

PHIL GOREY

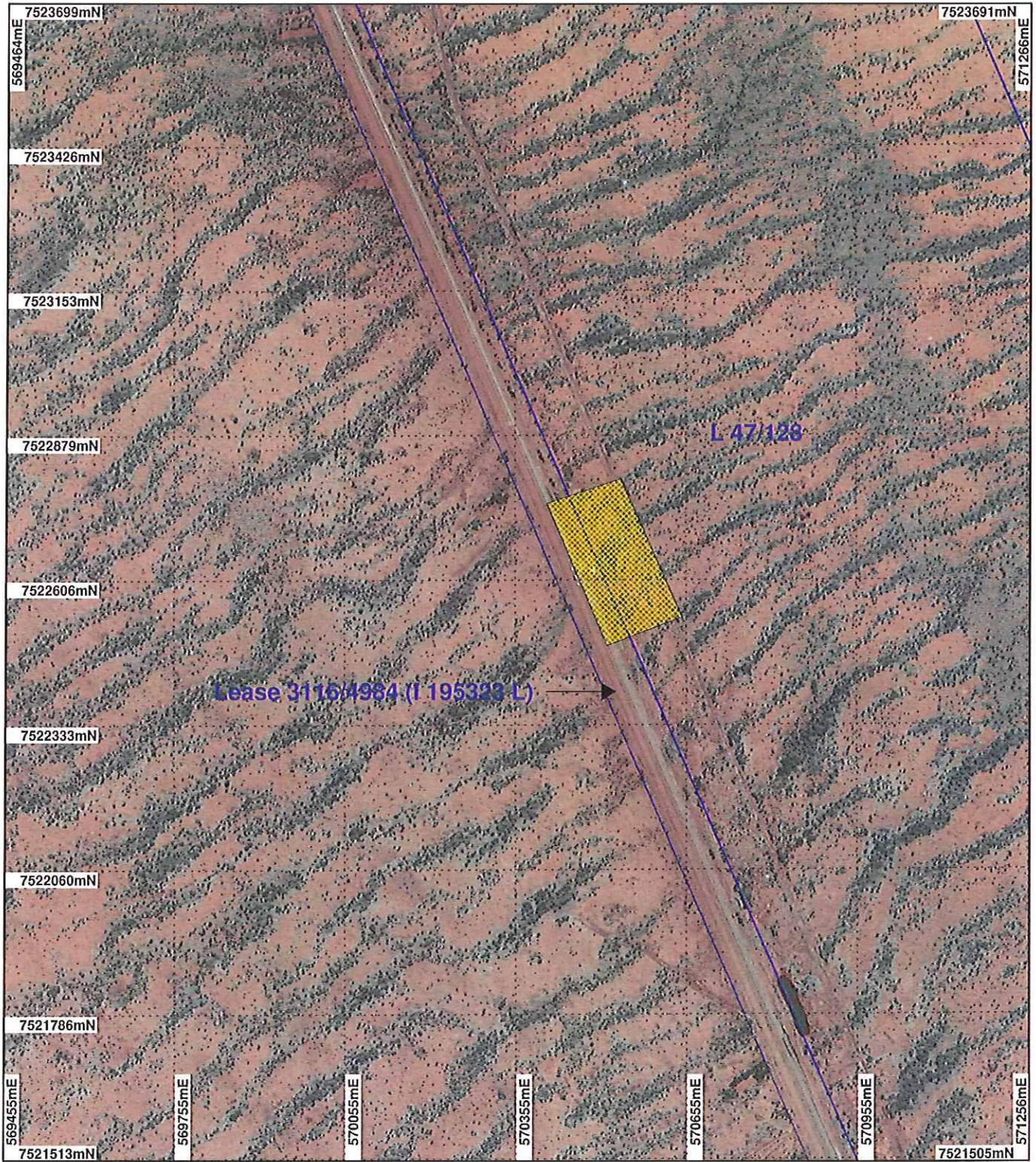
Officer with delegated authority under Section 20 of the Environmental Protection Act 1986

Information derived from this map should be confirmed with the data custodian acknowledged by the agency acronym in the legend.



WA Crown Copyright 2002

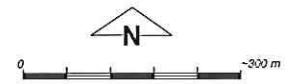
PLAN 4983/1 U



LEGEND

-  Cadastre for labelling
-  Mining Tenements
-  Clearing Instruments
-  Areas Approved to Clear

Mcrac 50cm Orthomosaic -
Landgate 2004



Scale 1:10000
(Approximate when reproduced at A4)

Geocentric Datum Australia 1994

Note: the data in this map have not been projected. This may result in geometric distortion or measurement inaccuracies.

 Date 28/6/2012

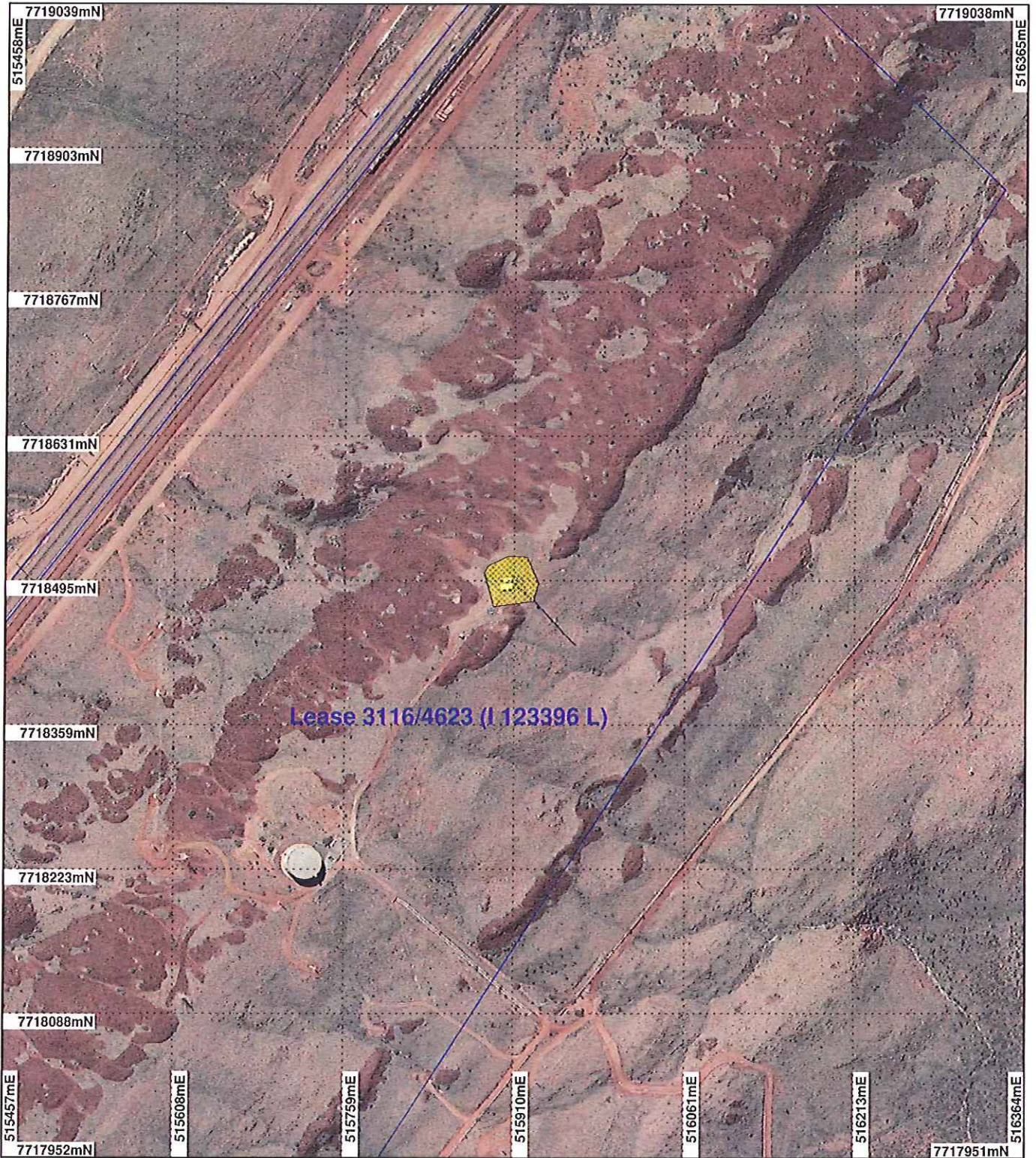
PHIL GOREY
Officer with delegated authority under Section 20 of
the Environmental Protection Act 1986

Information derived from this map should be confirmed with the data custodian acknowledged by the agency acronym in the legend.



WA Crown Copyright 2002

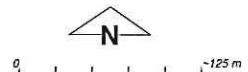
PLAN 4983/1 V



LEGEND

- Cadastre for labelling
- Mining Tenements
- Clearing Instruments
- Areas Approved to Clear

Roebourne 50cm Orthomosaic
- Landgate 2007



Scale 1:5000

(Approximate when reproduced at A4)

Geocentric Datum Australia 1994

Note: the data in this map have not been projected. This may result in geometric distortion or measurement inaccuracies.

PHIL GOREY

Officer with delegated authority under Section 20 of the Environmental Protection Act 1986

Information derived from this map should be confirmed with the data custodian acknowledged by the agency acronym in the legend.



WA Crown Copyright 2002