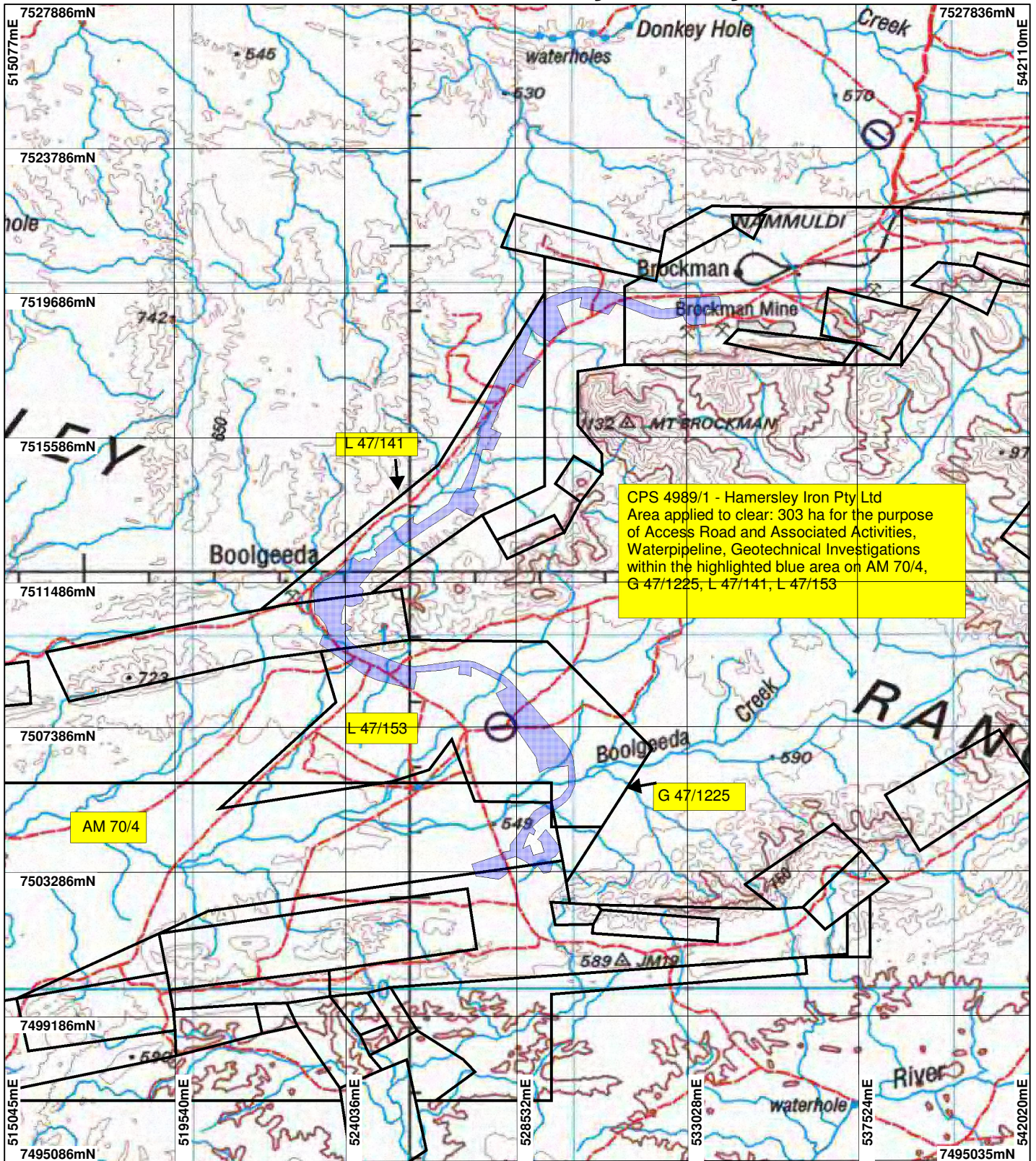


# CPS 4989/1 - Hamersley Iron Pty Ltd



CPS 4989/1 - Hamersley Iron Pty Ltd  
 Area applied to clear: 303 ha for the purpose of Access Road and Associated Activities, Waterpipeline, Geotechnical Investigations within the highlighted blue area on AM 70/4, G 47/1225, L 47/141, L 47/153

## LEGEND

- Mining Tenements
- Clearing Instruments\_1
- Areas Applied to Clear
- NATMAP 250K Series Mapping  
- GA 08/03



Scale 1:150000  
 (Approximate when reproduced at A4)  
 Geocentric Datum Australia 1994  
 Note: the data in this map have not been projected. This may result in geometric distortion or measurement inaccuracies.

..... Date .....

Officer with delegated authority under Section 20 of the Environmental Protection Act 1986

Information derived from this map should be confirmed with the data custodian acknowledged by the agency acronym in the legend.



\* Project Data. This data has not been quality assured. Please contact map author for details.