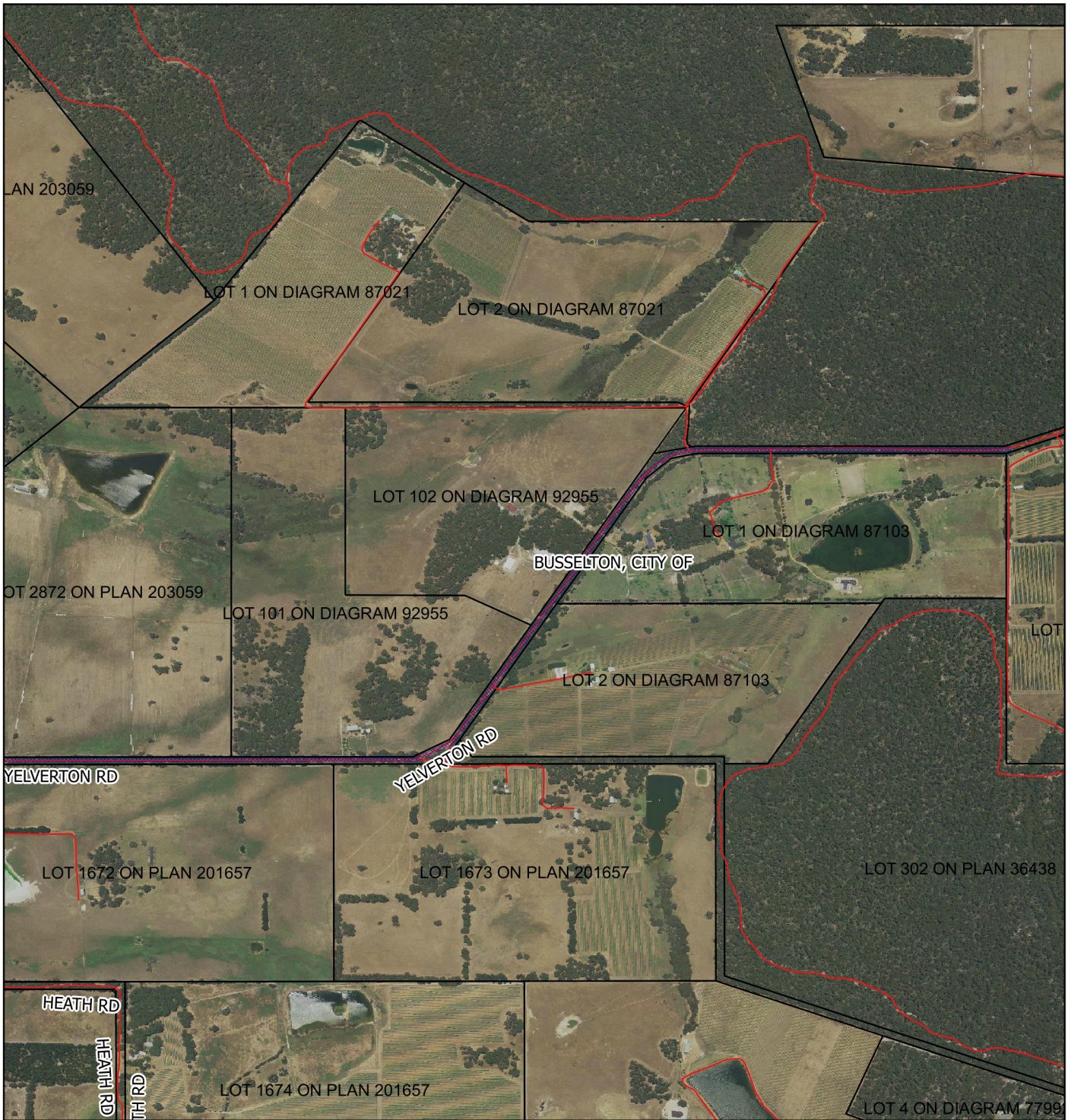





# CPS 5012/2 - Map c



## Legend

-  Clearing Instruments Proposal
-  Roads
-  Cadastre
-  local\_gov\_authority
- Virtual Mosaic



1:9,995

MGA 94

Geocentric Datum of Australia 1994

.....Date.....

Officer with delegated authority under Section 20  
of the Environmental Protection Act 1986



GOVERNMENT OF  
WESTERN AUSTRALIA