

RioTinto

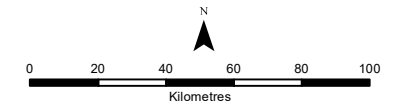
## Paraburdoo Project Location

Drawn: A.D.  
Plan: PDE0182829v1  
Date: May 2021

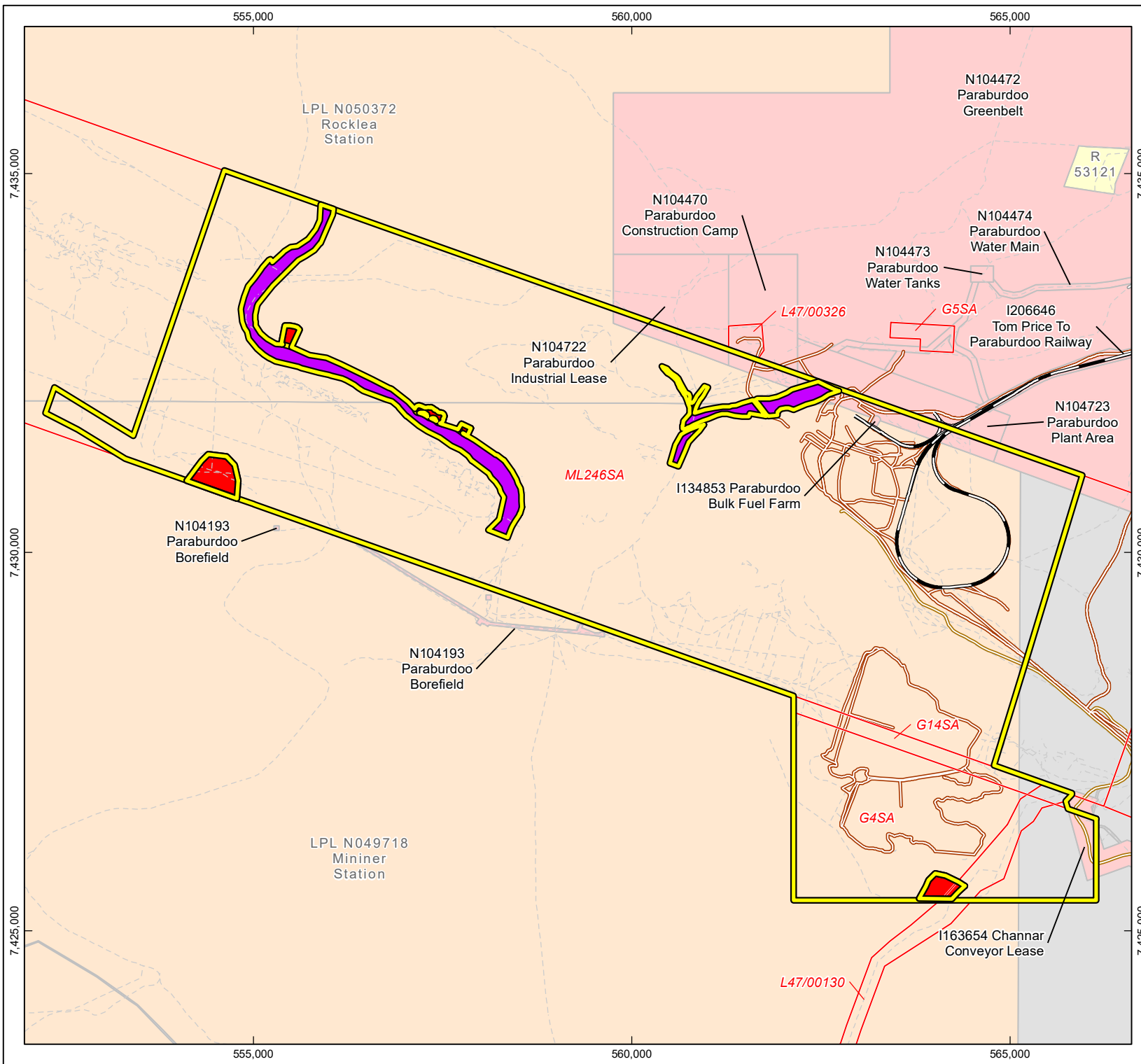
Proj: GDA 1994 MGA Zone 50  
Scale: 1:2,225,000 @ A4  
gisteam@riotinto.com

### Legend

- Rio Tinto Mine
- Port
- Town
- NVCP Application Area
- National Park
- Rio Tinto Railway
- Highway
- Major Road



**Disclaimer:** This document has been prepared to the highest level of accuracy possible, for the purposes of Rio Tinto's on one business. Reproduction of this document in whole or in part by any means is strictly prohibited without the express approval of Rio Tinto. Further, this document may not be referred to, quoted or relied upon for any purpose whatsoever without the written approval of Rio Tinto. Rio Tinto will not be liable to a third party for any loss, damage, liability or claim arising out of or incidental to a third party using or relying on the content contained in this document. Rio Tinto disclaims all risk and the third party assumes all risk and releases and indemnifies and agrees to keep indemnified Rio Tinto from any loss, damage, claim or liability arising directly or indirectly from the use or reliance on this document.



RioTinto

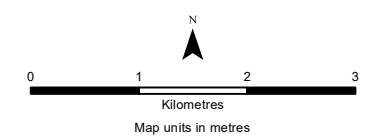
# NVCP CPS 5090/3 Paraburdoo

Drawn: A.D.  
Plan: PDE0182829v1  
Date: June 2021

Proj: GDA 1994 MGA Zone 50  
Scale: 1:70,000 @ A4  
gisteam@riotinto.com

## Legend

- CPS 5090
- NVCP Conditions**
  - Clearing not authorised
  - Vegetation management
- Land Administration Act Tenure**
  - General Lease
  - Pastoral Lease
  - Reserve
  - Unallocated Crown Land
  - Other
- Railway
- Site Access Road
- Haul Road
- Track



Disclaimer: This document has been prepared to the highest level of accuracy possible, for the purposes of Rio Tinto's iron ore business. Reproduction of this document in whole or in part by any means is strictly prohibited without the express approval of Rio Tinto. Further, this document may not be referred to, quoted or relied upon for any purpose whatsoever without the written approval of Rio Tinto. Rio Tinto will not be liable to a third party for any loss, damage, liability or claim arising out of or incidental to a third party using or relying on the content contained in this document. Rio Tinto disclaims all risk and the third party assumes all risk and releases and indemnifies and agrees to keep indemnified Rio Tinto from any loss, damage, claim or liability arising directly or indirectly from the use or reliance on this document.