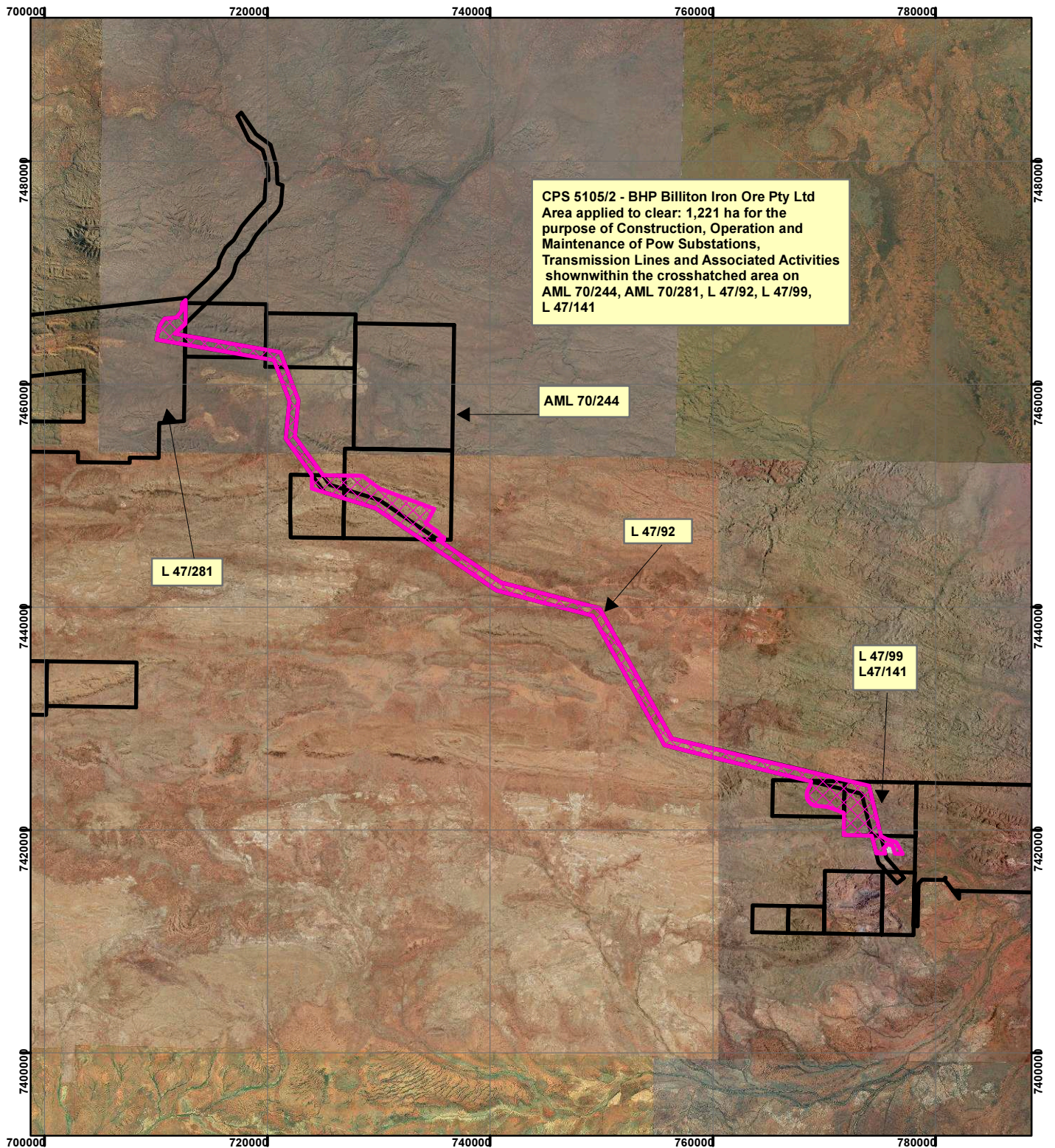



# CPS 5105/2 - BHP Billiton Iron Ore Pty Ltd




## Legend


 Clearing Instruments


### TENID

 AML7000244

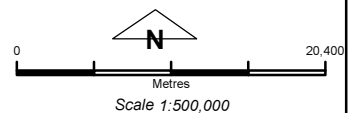
 AML7000281

 L 4700092

 L 4700099

 L 4700141

Virtual Mosaic



Geocentric Datum Australia 1994

Note: the data in this map have not been projected. This may result in geometric distortion or measurement inaccuracies.

..... Date .....

Officer with delegated authority under Section 20 of the Environmental Protection Act 1986

Information derived from this map should be confirmed with the data custodian acknowledged by the agency acronym in the legend.

