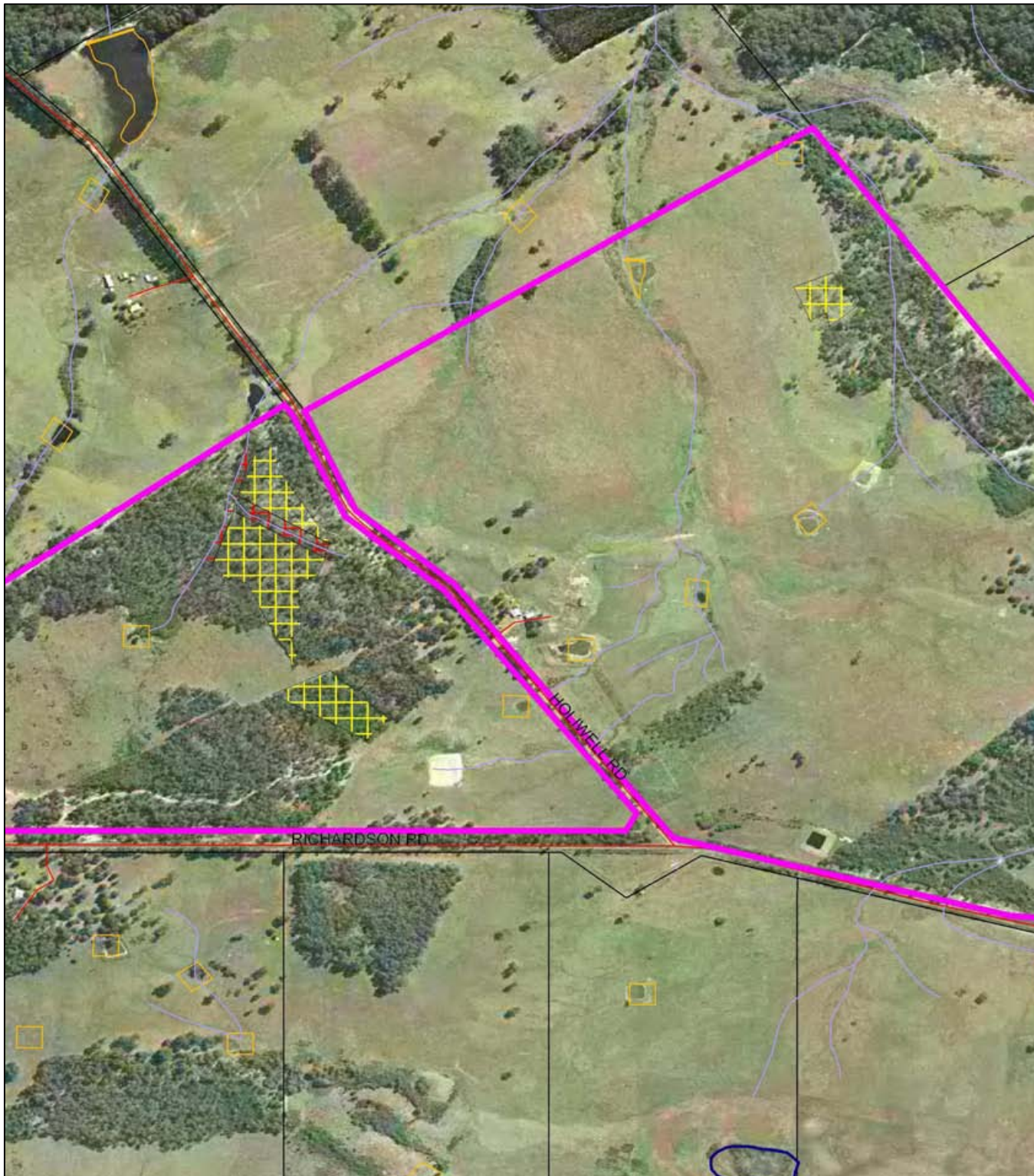


# Plan513/1



**LEGEND**

Land parcels related to instrument	Areas Approved to Clear	Busselton 50cm Orthomosaic - DLI 03
Clearing Instruments	Road Centrelines - DLI 1/5/04	Walpole 1.4m Orthomosaic - DOLA 99
Areas Subject to Conditions (cont)	Cadastre - DLI 1/09/05	Hydrography, linear - DOE 1/2/04
	Towns - DLI 8/04	

Scale 1:10211  
 (Approximate when reproduced at A4)  
 Geocentric Datum Australia 1994  
*Note: the data in this map have not been projected. This may result in geometric distortion or measurement inaccuracies.*

.....Date.....  
 Paul Rosair  
 Officer with delegated authority under Section 200 of the Environmental Protection Act 1986

Information derived from this map should be confirmed with the data custodian acknowledged by the agency acronym in the legend.

WACrown Copyright 2002