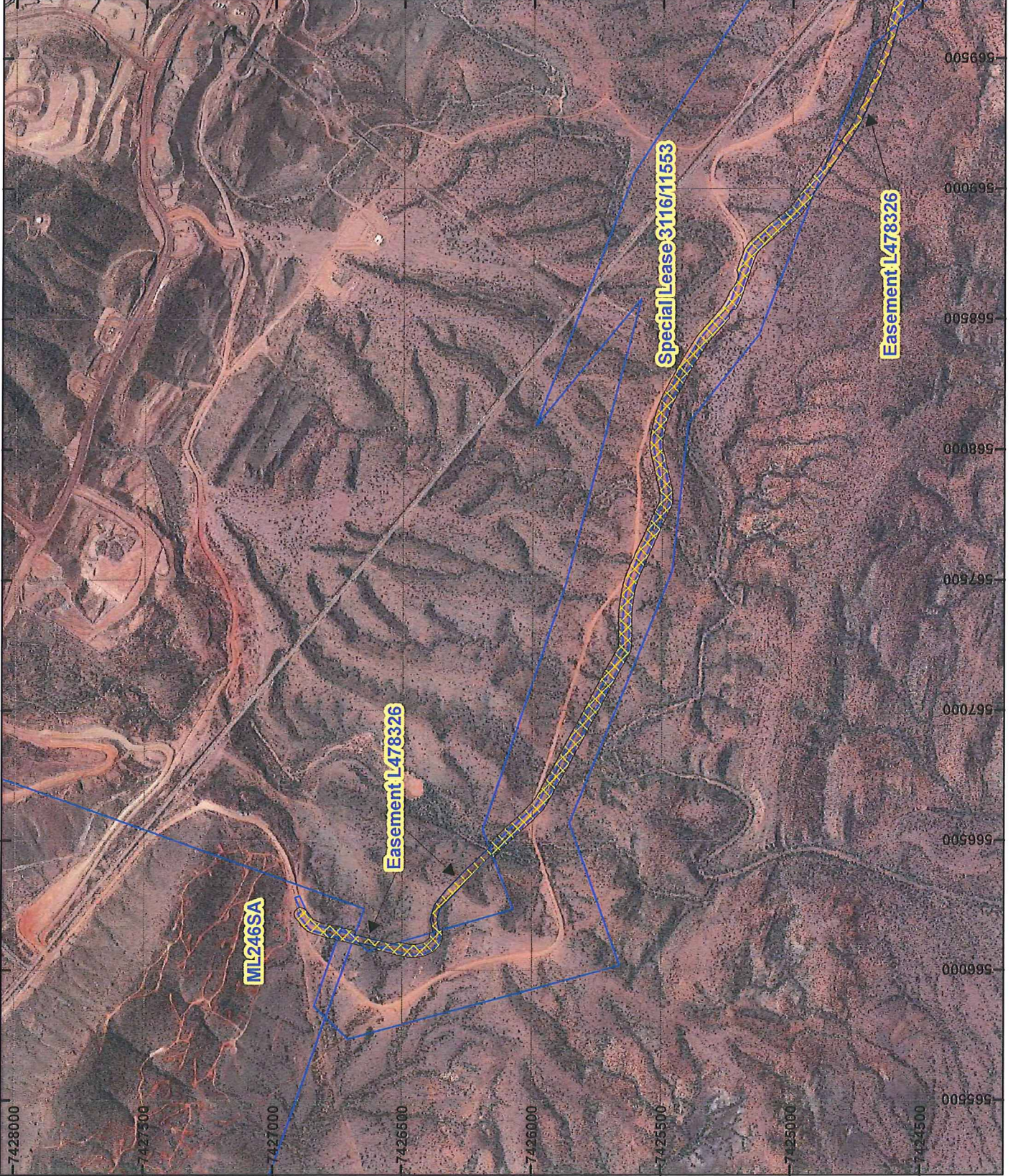
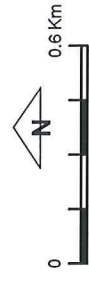


PLAN 5153/2A



LEGEND

- Mining Tenements
- Clearing Instruments
- Areas Approved to Clear
- Seamless Mosaic



Scale 1:20 000
(Approximate when reproduced at A4)

Geocentric Datum Australia 1984

Note: the data in this map have not been
checked for accuracy. The map is for general
information only. It is not to be used for
dispute resolution or measurement purposes.

STEVE TANTALA
[Signature]

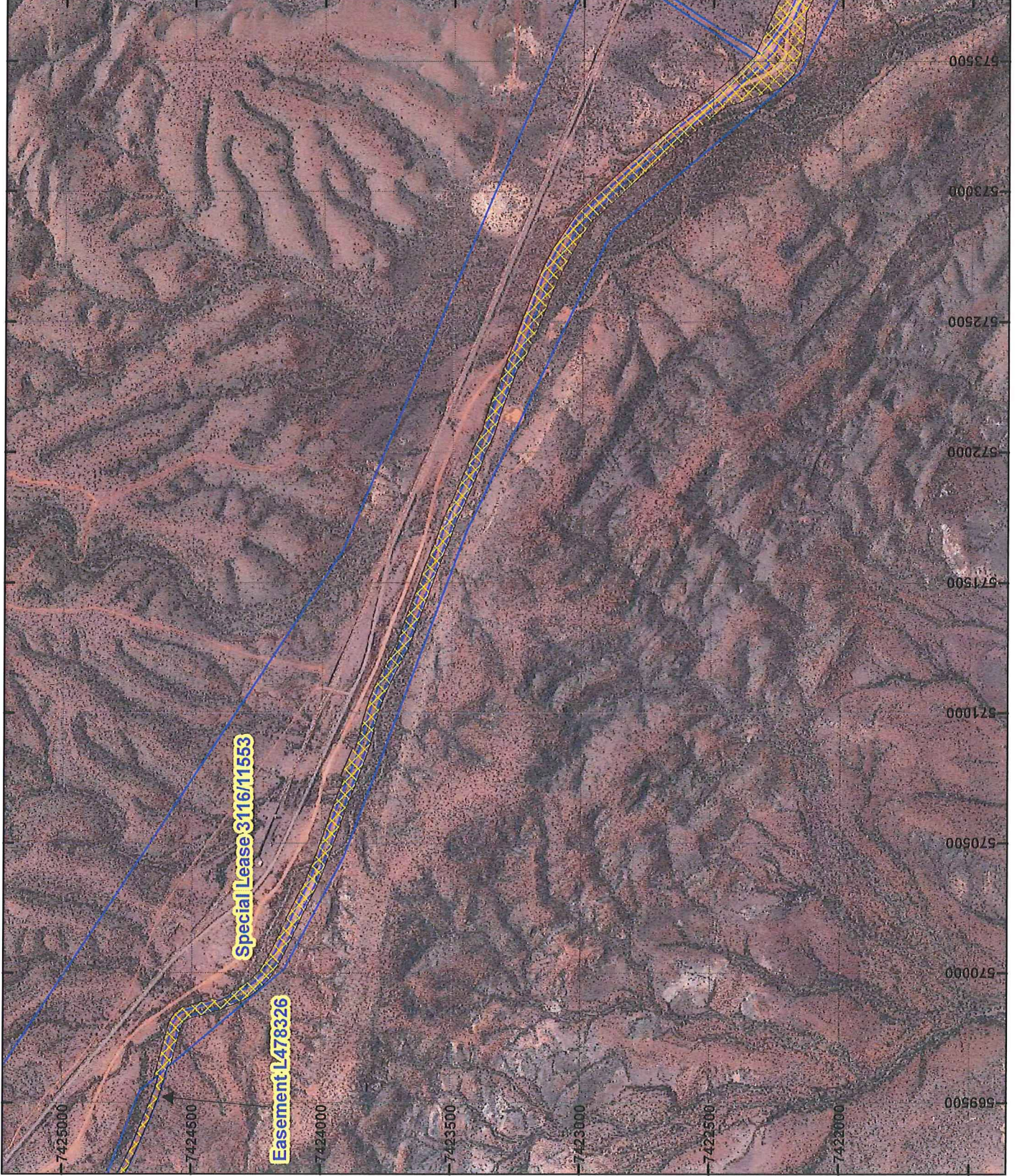
Officer with delegated authority under Section 20 of
the Environmental Protection Act 1986

Information derived from this map should be
confirmed with the data custodian acknowledged
by the agency acronym in the legend.



WA Crown Copyright 2022

PLAN 5153/2B



LEGEND

- Mining Tenements
- Clearing Instruments
- Areas Approved to Clear
- Seamless Mosaic



Scale 1:20,000
(Approximate when reproduced at A4)

Geocentric Datum Australia 1994

Note: the data in this map have not been projected. This may result in geometric distortion or measurement inaccuracies.

Signature: *[Handwritten Signature]*
Date: 22/10/15

STEVE TANTALA

Officer with delegated authority under Section 20 of the Environmental Protection Act 1986

Information derived from this map should be confirmed with the data custodian acknowledged by the agency acronym in the legend.



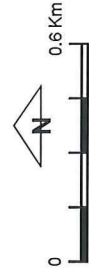
WA Crown Copyright 2002

PLAN 5153/2C



LEGEND

- Mining Tenements
- Clearing Instruments
- Areas Approved to Clear
- Seamless Mosaic



Scale 1:20 000
(Approximate when reproduced at A4)

Geocentric Datum Australia 1994
Note: the data in this map have not been projected. This may result in geometric distortion or measurement inaccuracies.

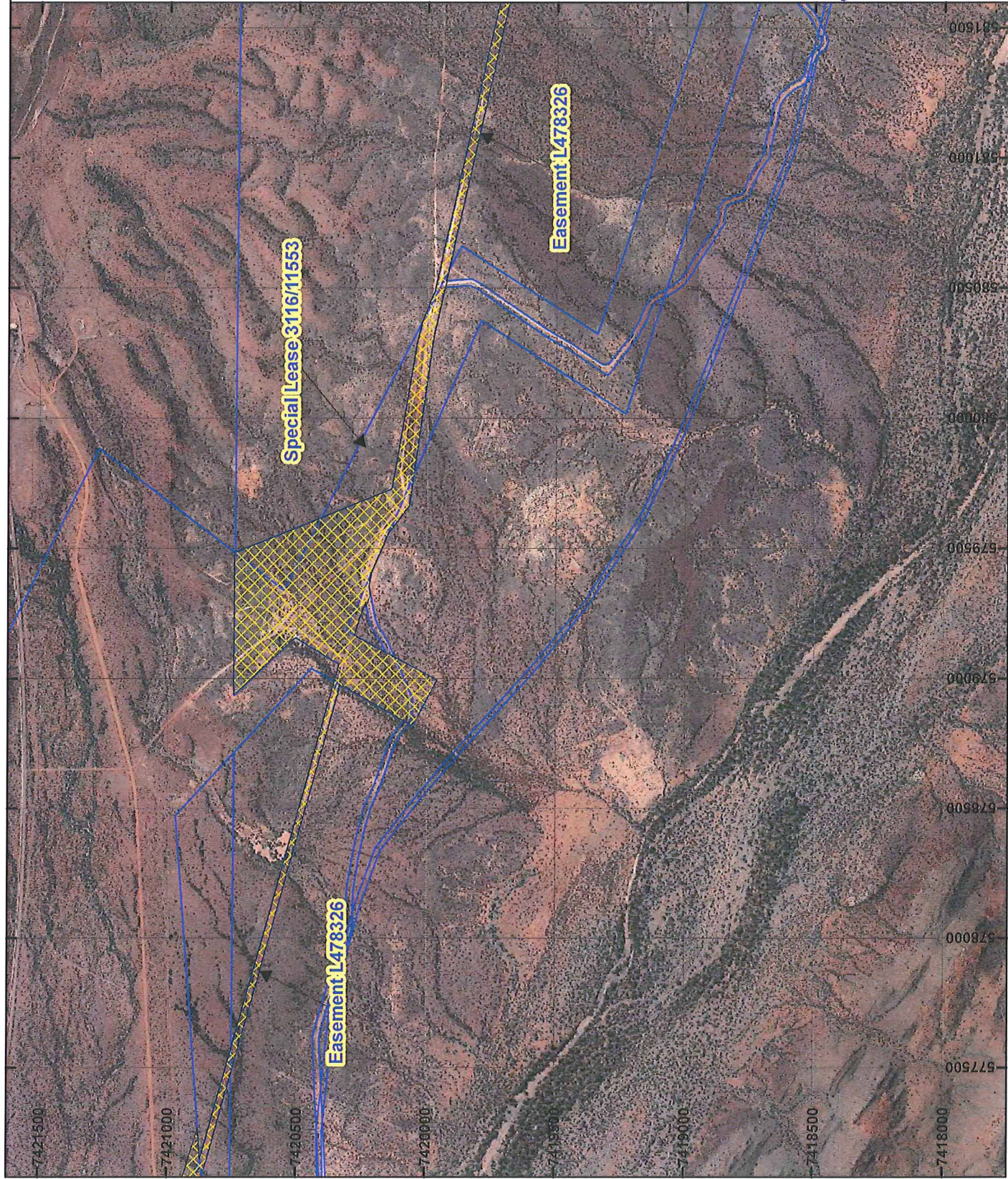
..... Date
2/15/15

..... STEVE TANTALA
Officer with delegated authority under Section 20 of the Environmental Protection Act 1986
Information derived from this map should be confirmed with the data custodian acknowledged by the agency acronym in the legend.



WA Crown Copyright 2002

PLAN 5153/2D



LEGEND

- Mining Tenements
- Clearing Instruments
- Areas Approved to Clear
- Seamless Mosaic



Scale 1:20 000
(Approximate when reproduced at A4)
Geocentric Datum Australia 1994
Note: the data in this map have not been projected. This may result in geometric distortion or measurement inaccuracies.

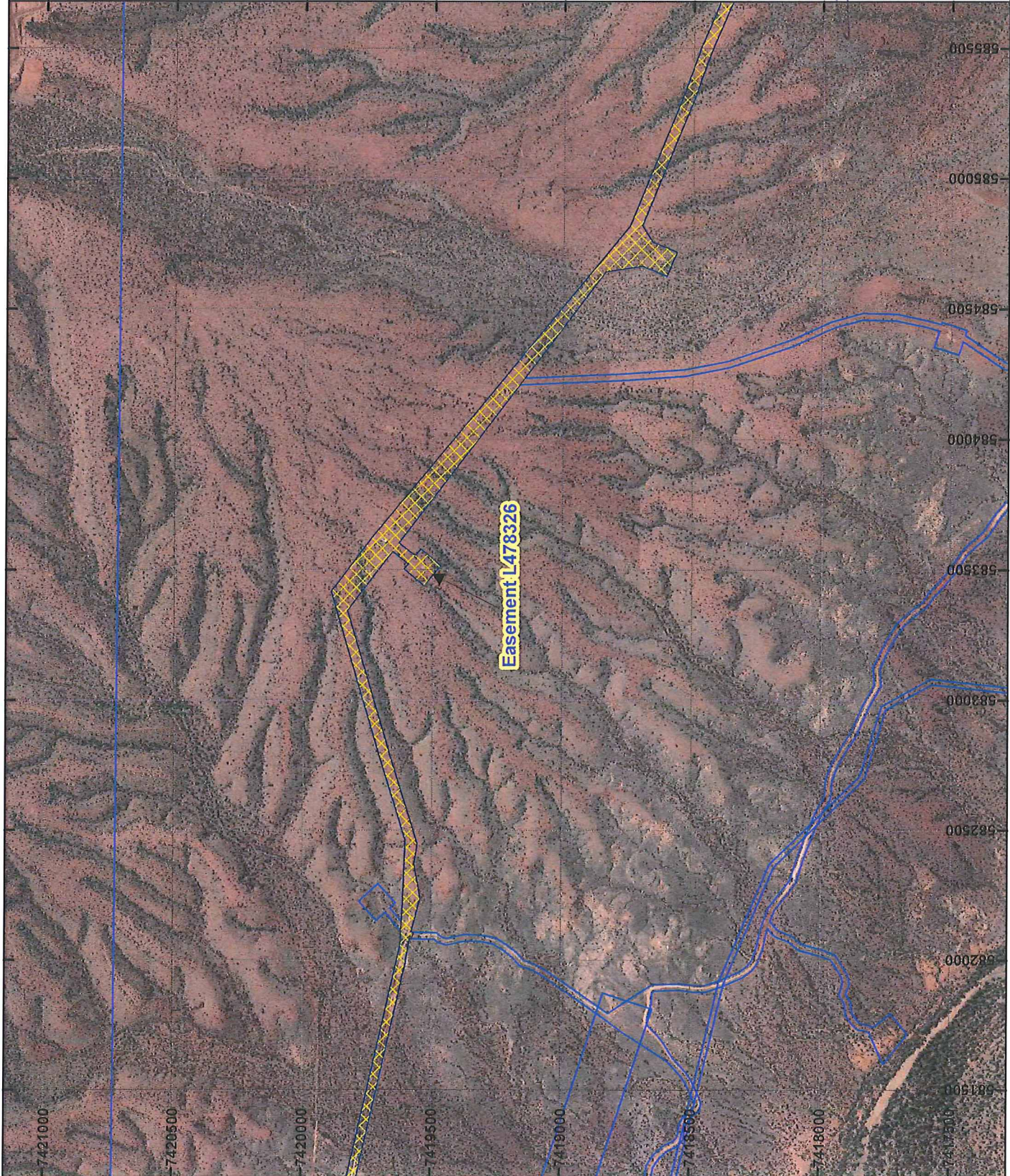
STEVE TANTALA
Date 20/5/15

Officer with delegated authority under Section 20 of the Environmental Protection Act 1986
Information derived from this map should be confirmed with the data custodian acknowledged by the agency acronym in the legend.



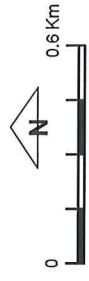
WA Crown Copyright 2002

PLAN 5153/2E



LEGEND

- Mining Tenements
- Clearing Instruments
- Areas Approved to Clear
- Seamless Mosaic



Scale 1:20,000
(Approximate when reproduced at A4)

Geocentric Datum Australia 1994

Note: the data in this map have not been projected. This may result in geometric distortion or measurement inaccuracies.

28/5/05

STEVE TANTALA

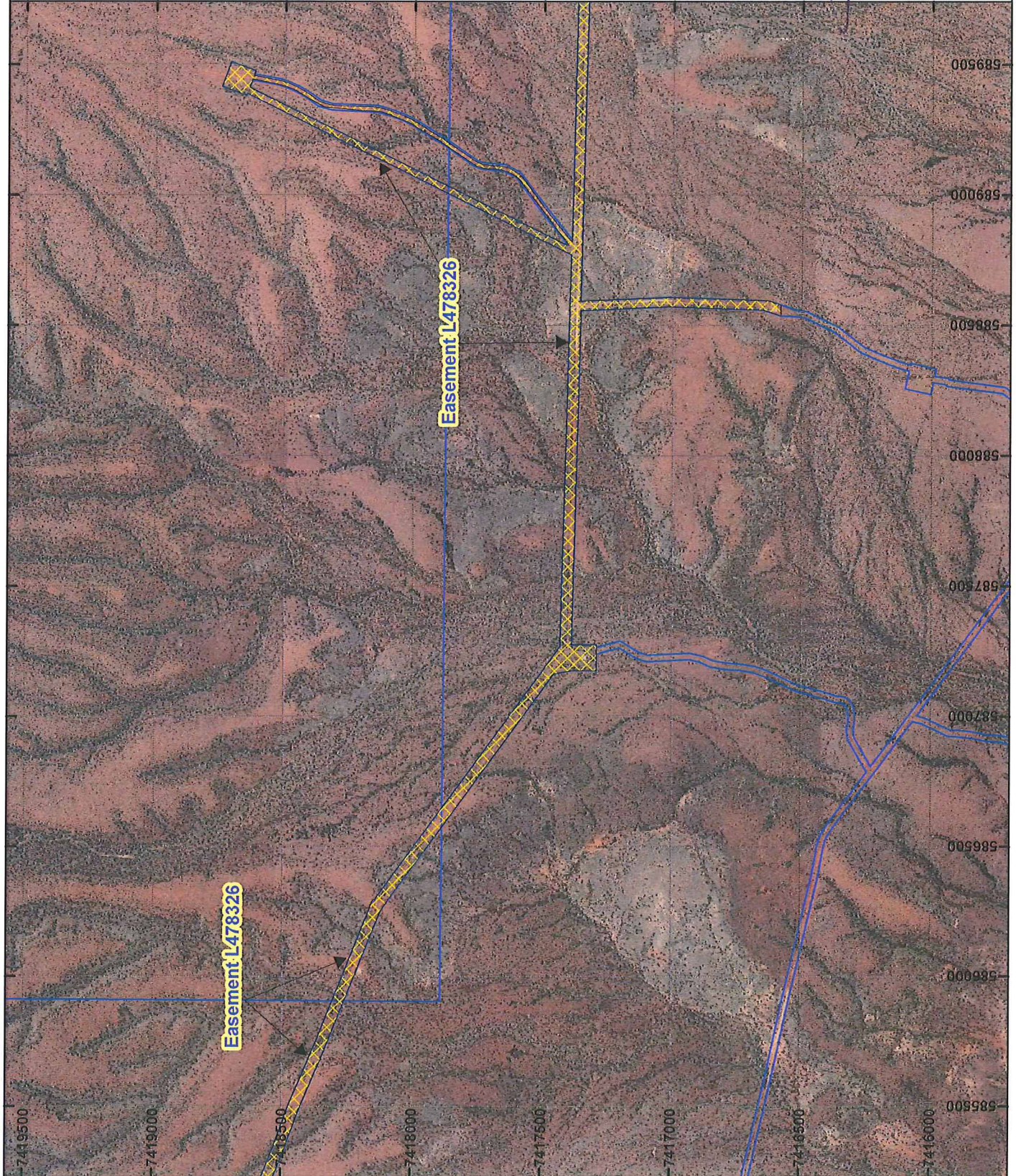
Officer with delegated authority under Section 20 of the Environmental Protection Act 1986

Information derived from this map should be confirmed with the data custodian acknowledged by the agency acronym in the legend.



WA Crown Copyright 2002

PLAN 5153/2F



LEGEND

- Mining Tenements
- Clearing Instruments
- Areas Approved to Clear
- Seamless Mosaic



Scale 1:20 000
(Approximate when reproduced at A4)
Geocentric Datum Australia 1994
Note: the data in this map have not been projected. This may result in geometric distortion or measurement inaccuracies.

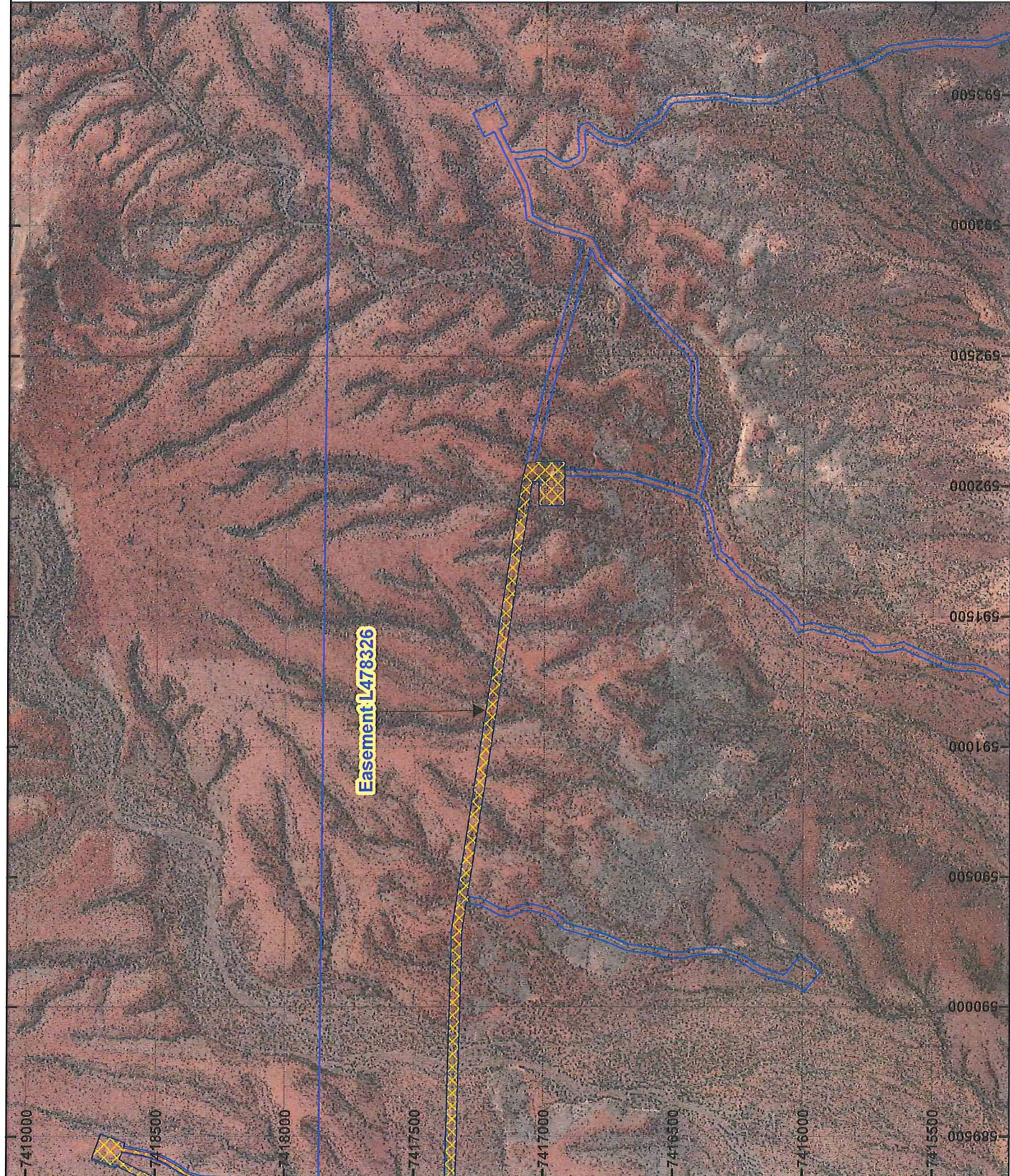
23/5/15
Date

STEVE TANTALA
Officer with delegated authority under Section 20 of the Environmental Protection Act 1986
Information derived from this map should be confirmed with the data custodian acknowledged by the agency acronym in the legend.



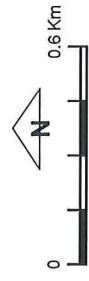
WA Crown Copyright 2002

PLAN 5153/2G



LEGEND

- Mining Tenements
- Clearing Instruments
- Areas Approved to Clear
- Seamless Mosaic



Scale 1:20 000
(Approximate when reproduced at A4)

Geocentric Datum Australia 1994

Note: the data in this map have not been projected. This may result in geometric distortion or measurement inaccuracies.

Signature: [Handwritten Signature] Date: 28/8/15

STEVE TANTALA

Officer with delegated authority under Section 20 of the Environmental Protection Act 1986

Information derived from this map should be confirmed with the data custodian acknowledged by the agency acronym in the legend.



WA Crown Copyright 2002