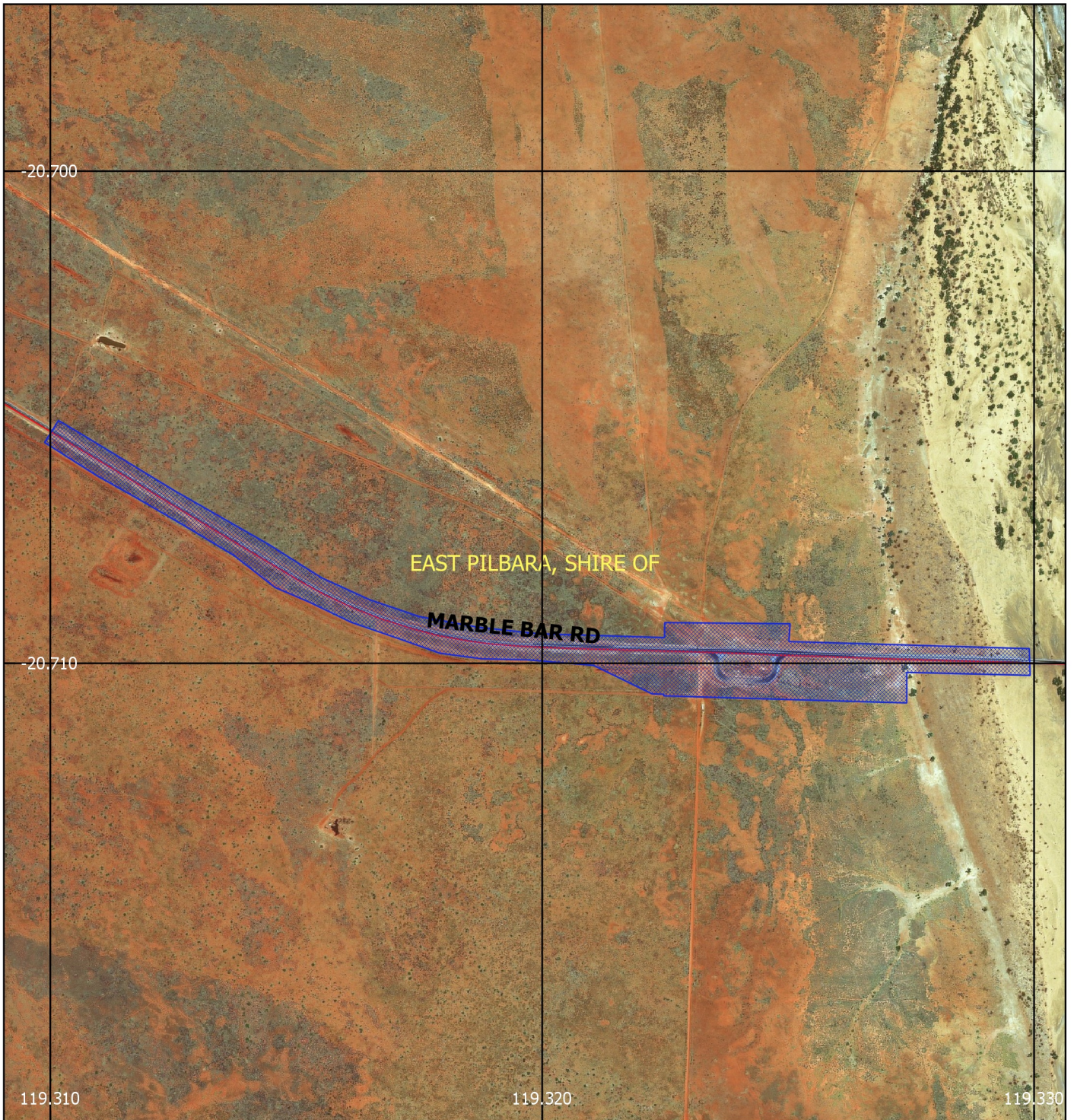






# CPS 5176/3 - Map



## Legend

-  Roads
-  Clearing Instruments Proposals
-  LGA
-  Cadastre
- World Imagery



1:10,000

MGA 94  
Geocentric Datum of Australia 1994

.....Date.....

Officer with delegated authority under Section 20  
of the Environmental Protection Act 1986



GOVERNMENT OF  
WESTERN AUSTRALIA