



CLEARING PERMIT

Granted under section 51E of the Environmental Protection Act 1986

Purpose Permit number:	CPS 5237/2
Permit Holder:	Department of Lands
Duration of Permit:	20 September 2012 – 20 September 2017

The Permit Holder is authorised to clear native vegetation subject to the following conditions of this Permit.

PART I – CLEARING AUTHORISED

1. Purpose for which clearing may be done

Clearing for the purpose of constructing flood mitigation levees, associated works and road re-alignment.

2. Land on which clearing is to be done

Section 91 Lic 00854/1996_03_171
South River Road reserve, South Plantations
Carnarvon-Mullewa Road reserve, Inggarda
Un-named Road reserve, Inggarda
Giles Road reserve (PIN 11739228), South Plantations
North West Coastal Highway road reserve (PIN 11739232), South Plantations
Lot 293 on Deposited Plan 173350 - Reserve 30474, South Plantations
Lot 5533 on Deposited Plan 41863 - Reserve 19145, South Plantations

3. Area of Clearing

The Permit Holder must not clear more than 215 hectares of native vegetation within the areas shaded yellow on attached Plan 5237/2.

4. Application

This Permit allows the Permit Holder to authorise persons, including employees, contractors and agents of the Permit Holder, to clear native vegetation for the purposes of this Permit subject to compliance with the conditions of this Permit and approval from the Permit Holder.

5. Type of clearing authorised

This Permit authorises the Permit Holder to clear native vegetation for activities to the extent that the Permit Holder has the right to access land under the *Land Administration Act 1997* or any other written law.

PART II – ASSESSMENT SEQUENCE AND MANAGEMENT PROCEDURES

7. Avoid, minimise etc clearing

In determining the amount of native vegetation to be cleared authorised under this Permit, the Permit Holder must have regard to the following principles, set out in order of preference:

- avoid the clearing of native vegetation;
- minimise the amount of native vegetation to be cleared; and
- reduce the impact of clearing on any environmental value.

8. Weed control

When undertaking any clearing or other activity authorised under this Permit, the Permit Holder must take the following steps to minimise the risk of the introduction and spread of *weeds*:

- (a) clean earth-moving machinery of soil and vegetation prior to entering and leaving the area to be cleared;
- (b) ensure that no *weed*-affected soil, *mulch*, *fill* or other material is brought into the area to be cleared; and
- (c) restrict the movement of machines and other vehicles to the limits of the areas to be cleared.

DEFINITIONS

The following meanings are given to terms used in this Permit:

fill means material used to increase the ground level, or fill a hollow;

mulch means the use of organic matter, wood chips or rocks to slow the movement of water across the soil surface and to reduce evaporation;

weed/s means any plant -

- (a) that is a declared pest under section 22 of the *Biosecurity and Agriculture Management Act 2007*; or
- (b) published in a Department of Parks and Wildlife Regional Weed Rankings Summary, regardless of ranking; or
- (c) not indigenous to the area concerned.

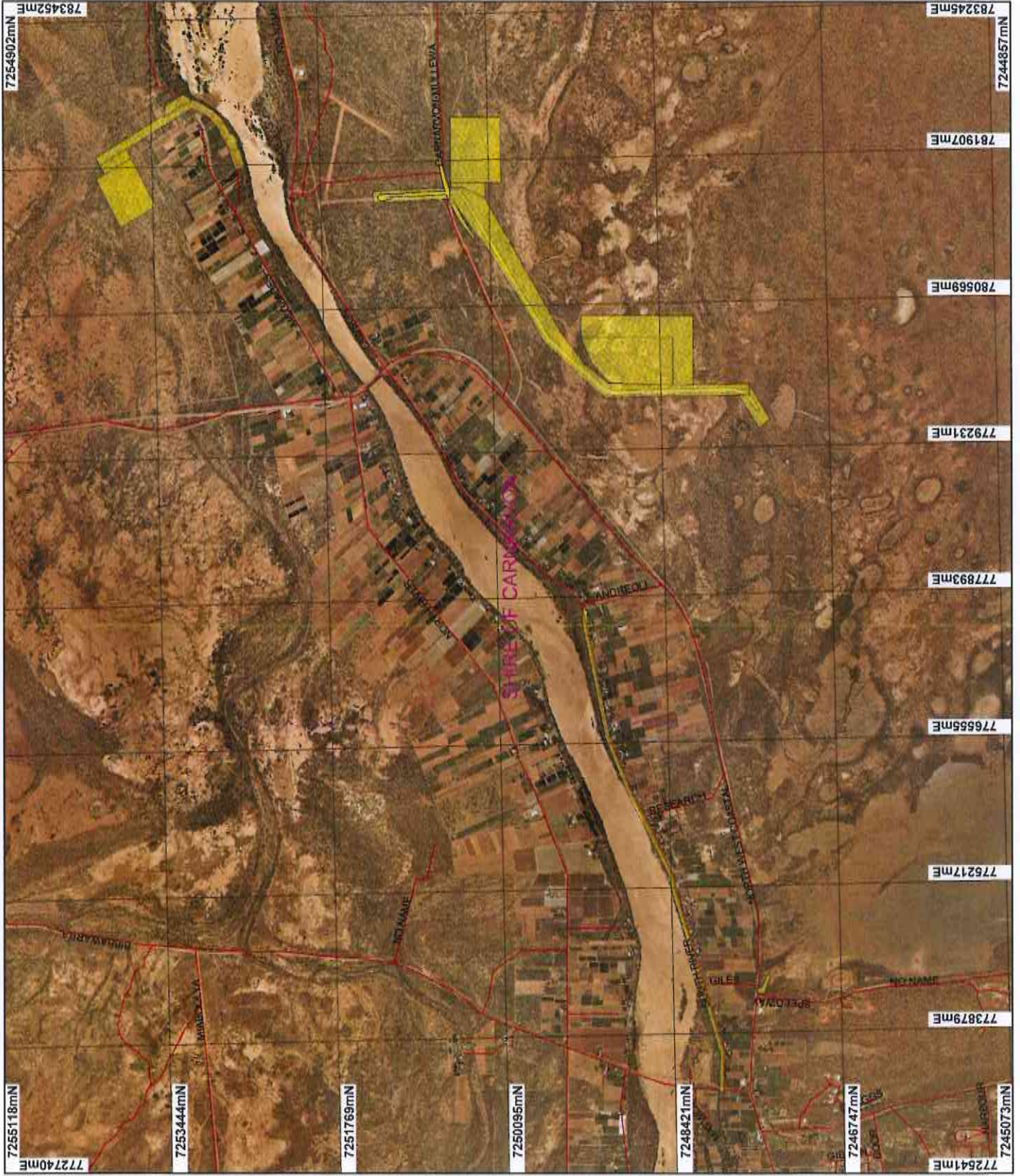


M Warnock
MANAGER
NATIVE VEGETATION CONSERVATION BRANCH

*Officer delegated under Section 20
of the Environmental Protection Act 1986*

1 May 2014

Plan 5237/2



LEGEND

-  Road Centrelines
-  Clearing Instruments
-  Areas Approved to Clear
-  Local Government Authorities
-  Carmanvon 1.4m Orthomosaic - Landgate 2002

* Project Data is denoted by asterisk.
This data has not been quality assured.
Please contact map author for details.



0 1 2 3 4 5 6 7 8 9 10 11 12 13 14 15 16 17 18 19 20 21 22 23 24 25 26 27 28 29 30 31 32 33 34 35 36 37 38 39 40 41 42 43 44 45 46 47 48 49 50 51 52 53 54 55 56 57 58 59 60 61 62 63 64 65 66 67 68 69 70 71 72 73 74 75 76 77 78 79 80 81 82 83 84 85 86 87 88 89 90 91 92 93 94 95 96 97 98 99 100 101 102 103 104 105 106 107 108 109 110 111 112 113 114 115 116 117 118 119 120 121 122 123 124 125 126 127 128 129 130 131 132 133 134 135 136 137 138 139 140 141 142 143 144 145 146 147 148 149 150 151 152 153 154 155 156 157 158 159 160 161 162 163 164 165 166 167 168 169 170 171 172 173 174 175 176 177 178 179 180 181 182 183 184 185 186 187 188 189 190 191 192 193 194 195 196 197 198 199 200 201 202 203 204 205 206 207 208 209 210 211 212 213 214 215 216 217 218 219 220 221 222 223 224 225 226 227 228 229 230 231 232 233 234 235 236 237 238 239 240 241 242 243 244 245 246 247 248 249 250 251 252 253 254 255 256 257 258 259 260 261 262 263 264 265 266 267 268 269 270 271 272 273 274 275 276 277 278 279 280 281 282 283 284 285 286 287 288 289 290 291 292 293 294 295 296 297 298 299 300 301 302 303 304 305 306 307 308 309 310 311 312 313 314 315 316 317 318 319 320 321 322 323 324 325 326 327 328 329 330 331 332 333 334 335 336 337 338 339 340 341 342 343 344 345 346 347 348 349 350 351 352 353 354 355 356 357 358 359 360 361 362 363 364 365 366 367 368 369 370 371 372 373 374 375 376 377 378 379 380 381 382 383 384 385 386 387 388 389 390 391 392 393 394 395 396 397 398 399 400 401 402 403 404 405 406 407 408 409 410 411 412 413 414 415 416 417 418 419 420 421 422 423 424 425 426 427 428 429 430 431 432 433 434 435 436 437 438 439 440 441 442 443 444 445 446 447 448 449 450 451 452 453 454 455 456 457 458 459 460 461 462 463 464 465 466 467 468 469 470 471 472 473 474 475 476 477 478 479 480 481 482 483 484 485 486 487 488 489 490 491 492 493 494 495 496 497 498 499 500 501 502 503 504 505 506 507 508 509 510 511 512 513 514 515 516 517 518 519 520 521 522 523 524 525 526 527 528 529 530 531 532 533 534 535 536 537 538 539 540 541 542 543 544 545 546 547 548 549 550 551 552 553 554 555 556 557 558 559 560 561 562 563 564 565 566 567 568 569 570 571 572 573 574 575 576 577 578 579 580 581 582 583 584 585 586 587 588 589 590 591 592 593 594 595 596 597 598 599 600 601 602 603 604 605 606 607 608 609 610 611 612 613 614 615 616 617 618 619 620 621 622 623 624 625 626 627 628 629 630 631 632 633 634 635 636 637 638 639 640 641 642 643 644 645 646 647 648 649 650 651 652 653 654 655 656 657 658 659 660 661 662 663 664 665 666 667 668 669 670 671 672 673 674 675 676 677 678 679 680 681 682 683 684 685 686 687 688 689 690 691 692 693 694 695 696 697 698 699 700 701 702 703 704 705 706 707 708 709 710 711 712 713 714 715 716 717 718 719 720 721 722 723 724 725 726 727 728 729 730 731 732 733 734 735 736 737 738 739 740 741 742 743 744 745 746 747 748 749 750 751 752 753 754 755 756 757 758 759 760 761 762 763 764 765 766 767 768 769 770 771 772 773 774 775 776 777 778 779 780 781 782 783 784 785 786 787 788 789 790 791 792 793 794 795 796 797 798 799 800 801 802 803 804 805 806 807 808 809 810 811 812 813 814 815 816 817 818 819 820 821 822 823 824 825 826 827 828 829 830 831 832 833 834 835 836 837 838 839 840 841 842 843 844 845 846 847 848 849 850 851 852 853 854 855 856 857 858 859 860 861 862 863 864 865 866 867 868 869 870 871 872 873 874 875 876 877 878 879 880 881 882 883 884 885 886 887 888 889 890 891 892 893 894 895 896 897 898 899 900 901 902 903 904 905 906 907 908 909 910 911 912 913 914 915 916 917 918 919 920 921 922 923 924 925 926 927 928 929 930 931 932 933 934 935 936 937 938 939 940 941 942 943 944 945 946 947 948 949 950 951 952 953 954 955 956 957 958 959 960 961 962 963 964 965 966 967 968 969 970 971 972 973 974 975 976 977 978 979 980 981 982 983 984 985 986 987 988 989 990 991 992 993 994 995 996 997 998 999 1000

Scale 1:50000
(Approximate when reproduced at A4)

Geocentric Datum Australia 1994

Note: the data in this map have not been projected. This map is for geographic location or measurement purposes.

Michael Date 1/5/14
M Waincock

Office with delegated authority under Section 20 of the Environmental Protection Act 1986
Information derived from this map should be confirmed with the data custodian acknowledged by the agency acronym in the legend.



Government of Western Australia
Department of Environment Regulation
WA Crown Copyright 2002



Clearing Permit Decision Report

1. Application details

1.1. Permit application details

Permit application No.: 5237/2
Permit type: Purpose Permit

1.2. Proponent details

Proponent's name: Commissioner of Main Roads WA on behalf of Department of Lands

1.3. Property details

Property:

- LOT 5533 ON PLAN 41863 (SOUTH PLANTATIONS 6701)
- ROAD RESERVE (SOUTH PLANTATIONS 6701)
- LOT 293 ON PLAN 173350 (House No. 1160 NORTH WEST COASTAL BROWN RANGE 6701)
- LOT 241 ON PLAN 37700 (Lot No. 241 BIBBAWARRA KINGSFORD 6701)
- LOT 312 ON PLAN 42660 (SOUTH PLANTATIONS 6701)
- LOT 6513 ON PLAN 41863 (SOUTH PLANTATIONS 6701)
- LOT 5528 ON PLAN 41863 (SOUTH PLANTATIONS 6701)
- LOT 7502 ON PLAN 41863 (SOUTH PLANTATIONS 6701)
- LOT 5527 ON PLAN 41863 (SOUTH PLANTATIONS 6701)
- LOT 8 ON DIAGRAM 38791 (House No. 42 SOUTH RIVER SOUTH PLANTATIONS 6701)
- LOT 2 ON DIAGRAM 13435 (House No. 58 SOUTH RIVER SOUTH PLANTATIONS 6701)
- LOT 6515 ON PLAN 41863 (SOUTH PLANTATIONS 6701)
- LOT 5532 ON PLAN 41863 (SOUTH PLANTATIONS 6701)
- LOT 5530 ON PLAN 41863 (SOUTH PLANTATIONS 6701)
- LOT 6514 ON PLAN 41863 (SOUTH PLANTATIONS 6701)
- LOT 71 ON PLAN 202351 (House No. 72 SOUTH RIVER SOUTH PLANTATIONS 6701)
- LOT 6516 ON PLAN 41863 (SOUTH PLANTATIONS 6701)
- LOT 6518 ON PLAN 41863 (SOUTH PLANTATIONS 6701)
- LOT 5535 ON PLAN 41863 (SOUTH PLANTATIONS 6701)
- LOT 3540 ON PLAN 41863 (SOUTH PLANTATIONS 6701)
- LOT 600 ON PLAN 300932 (House No. 124 SOUTH RIVER SOUTH PLANTATIONS 6701)
- LOT 3541 ON PLAN 41863 (SOUTH PLANTATIONS 6701)
- LOT 5536 ON PLAN 41863 (SOUTH PLANTATIONS 6701)
- LOT 6519 ON PLAN 41863 (SOUTH PLANTATIONS 6701)
- LOT 601 ON PLAN 300932 (House No. 138 SOUTH RIVER SOUTH PLANTATIONS 6701)
- LOT 6520 ON PLAN 41863 (SOUTH PLANTATIONS 6701)
- LOT 5537 ON PLAN 41863 (SOUTH PLANTATIONS 6701)
- LOT 3542 ON PLAN 41863 (SOUTH PLANTATIONS 6701)
- LOT 3 ON DIAGRAM 17639 (House No. 148 SOUTH RIVER SOUTH PLANTATIONS 6701)
- LOT 3543 ON PLAN 41863 (SOUTH PLANTATIONS 6701)
- LOT 5538 ON PLAN 41863 (SOUTH PLANTATIONS 6701)
- LOT 6521 ON PLAN 41863 (SOUTH PLANTATIONS 6701)
- LOT 4 ON DIAGRAM 17639 (House No. 158 SOUTH RIVER SOUTH PLANTATIONS 6701)
- LOT 3544 ON PLAN 41863 (SOUTH PLANTATIONS 6701)
- LOT 5539 ON PLAN 41863 (SOUTH PLANTATIONS 6701)
- LOT 6522 ON PLAN 41863 (SOUTH PLANTATIONS 6701)
- LOT 8 ON DIAGRAM 24221 (House No. 170 SOUTH RIVER SOUTH PLANTATIONS 6701)
- LOT 6523 ON PLAN 41863 (SOUTH PLANTATIONS 6701)
- LOT 5540 ON PLAN 41863 (SOUTH PLANTATIONS 6701)
- LOT 3545 ON PLAN 41863 (SOUTH PLANTATIONS 6701)
- LOT 9 ON DIAGRAM 24221 (House No. 176 SOUTH RIVER SOUTH PLANTATIONS 6701)
- LOT 6525 ON PLAN 41863 (SOUTH PLANTATIONS 6701)
- LOT 5542 ON PLAN 41863 (SOUTH PLANTATIONS 6701)

LOT 3546 ON PLAN 41863 (SOUTH PLANTATIONS 6701)
LOT 5541 ON PLAN 41863 (SOUTH PLANTATIONS 6701)
LOT 6524 ON PLAN 41863 (SOUTH PLANTATIONS 6701)
LOT 76 ON PLAN 202351 (House No. 178 SOUTH RIVER SOUTH PLANTATIONS 6701)
LOT 3547 ON PLAN 41863 (SOUTH PLANTATIONS 6701)
LOT 77 ON PLAN 202351 (House No. 200 SOUTH RIVER SOUTH PLANTATIONS 6701)
LOT 6526 ON PLAN 41863 (SOUTH PLANTATIONS 6701)
LOT 5543 ON PLAN 41863 (SOUTH PLANTATIONS 6701)
LOT 3548 ON PLAN 41863 (SOUTH PLANTATIONS 6701)
LOT 1 ON DIAGRAM 60868 (House No. 208 SOUTH RIVER SOUTH PLANTATIONS 6701)
LOT 5544 ON PLAN 41863 (SOUTH PLANTATIONS 6701)
LOT 6527 ON PLAN 41863 (SOUTH PLANTATIONS 6701)
LOT 2 ON DIAGRAM 60868 (House No. 230 SOUTH RIVER SOUTH PLANTATIONS 6701)
LOT 2 ON DIAGRAM 60868 (House No. 230 SOUTH RIVER SOUTH PLANTATIONS 6701)
LOT 6528 ON PLAN 41863 (SOUTH PLANTATIONS 6701)
LOT 5545 ON PLAN 41863 (SOUTH PLANTATIONS 6701)
LOT 3551 ON PLAN 41863 (SOUTH PLANTATIONS 6701)
LOT 6529 ON PLAN 41863 (SOUTH PLANTATIONS 6701)
LOT 5546 ON PLAN 41863 (SOUTH PLANTATIONS 6701)
LOT 461 ON PLAN 202366 (House No. 274 SOUTH RIVER SOUTH PLANTATIONS 6701)
LOT 6531 ON PLAN 41863 (SOUTH PLANTATIONS 6701)
LOT 5548 ON PLAN 41863 (SOUTH PLANTATIONS 6701)
LOT 3553 ON PLAN 41863 (SOUTH PLANTATIONS 6701)
LOT 6517 ON PLAN 41863 (SOUTH PLANTATIONS 6701)
LOT 5534 ON PLAN 41863 (SOUTH PLANTATIONS 6701)
LOT 3552 ON PLAN 41863 (SOUTH PLANTATIONS 6701)
LOT 5547 ON PLAN 41863 (SOUTH PLANTATIONS 6701)
LOT 6530 ON PLAN 41863 (SOUTH PLANTATIONS 6701)
LOT 6532 ON PLAN 41863 (SOUTH PLANTATIONS 6701)
LOT 5549 ON PLAN 41863 (SOUTH PLANTATIONS 6701)
LOT 6533 ON PLAN 41863 (SOUTH PLANTATIONS 6701)
LOT 5550 ON PLAN 41863 (Lot No. 5550 SOUTH RIVER SOUTH PLANTATIONS 6701)
LOT 5551 ON PLAN 41863 (SOUTH PLANTATIONS 6701)
LOT 6534 ON PLAN 41863 (SOUTH PLANTATIONS 6701)
LOT 5552 ON PLAN 41863 (SOUTH PLANTATIONS 6701)
LOT 6535 ON PLAN 41863 (SOUTH PLANTATIONS 6701)
LOT 6536 ON PLAN 41863 (SOUTH PLANTATIONS 6701)
LOT 5553 ON PLAN 41863 (SOUTH PLANTATIONS 6701)
LOT 6537 ON PLAN 41863 (SOUTH PLANTATIONS 6701)
LOT 5554 ON PLAN 41863 (SOUTH PLANTATIONS 6701)
LOT 6538 ON PLAN 41863 (SOUTH PLANTATIONS 6701)
LOT 5555 ON PLAN 41863 (SOUTH PLANTATIONS 6701)
LOT 5556 ON PLAN 41863 (SOUTH PLANTATIONS 6701)
LOT 6539 ON PLAN 41863 (SOUTH PLANTATIONS 6701)
LOT 6540 ON PLAN 41863 (SOUTH PLANTATIONS 6701)
LOT 5557 ON PLAN 41863 (SOUTH PLANTATIONS 6701)
LOT 6541 ON PLAN 41863 (SOUTH PLANTATIONS 6701)
LOT 5558 ON PLAN 41863 (SOUTH PLANTATIONS 6701)
LOT 6542 ON PLAN 41863 (SOUTH PLANTATIONS 6701)
LOT 5559 ON PLAN 41863 (SOUTH PLANTATIONS 6701)
LOT 6543 ON PLAN 41863 (SOUTH PLANTATIONS 6701)
LOT 5560 ON PLAN 41863 (SOUTH PLANTATIONS 6701)
LOT 170 ON PLAN 204547 (House No. 472 SOUTH RIVER SOUTH PLANTATIONS 6701)
ROAD RESERVE (SOUTH PLANTATIONS 6701)
LOT 6545 ON PLAN 41863 (SOUTH PLANTATIONS 6701)
LOT 5562 ON PLAN 41863 (SOUTH PLANTATIONS 6701)
LOT 6544 ON PLAN 41863 (SOUTH PLANTATIONS 6701)
LOT 5561 ON PLAN 41863 (SOUTH PLANTATIONS 6701)
LOT 171 ON PLAN 204547 (House No. 450 SOUTH RIVER SOUTH PLANTATIONS 6701)
LOT 415 ON PLAN 220782 (House No. 415 NORTH WEST COASTAL INGGARDA 6701)
LOT 446 ON PLAN 54526 (INGGARDA 6701)

LOT 415 ON PLAN 220782 (House No. 415 NORTH WEST COASTAL INGGARDA 6701)
 ROAD RESERVE (INGGARDA 6701)
 LOT 5105 ON PLAN 41863 (NORTH PLANTATIONS 6701)
 LOT 301 ON PLAN 211355 (House No. 219 MCGLADES NORTH PLANTATIONS 6701)
 LOT 5104 ON PLAN 41863 (NORTH PLANTATIONS 6701)
 LOT 307 ON PLAN 174874 (House No. 259 MCGLADES NORTH PLANTATIONS 6701)
 LOT 5106 ON PLAN 41863 (NORTH PLANTATIONS 6701)
 LOT 308 ON PLAN 174874 (House No. 279 MCGLADES NORTH PLANTATIONS 6701)
 LOT 5107 ON PLAN 41863 (NORTH PLANTATIONS 6701)
 LOT 309 ON PLAN 174874 (House No. 291 MCGLADES NORTH PLANTATIONS 6701)
 LOT 5108 ON PLAN 41863 (NORTH PLANTATIONS 6701)
 LOT 5533 ON PLAN 41863 (SOUTH PLANTATIONS 6701)

Local Government Area:

Shire of Carnarvon

Colloquial name:

1.4. Application

Clearing Area (ha)	No. Trees	Method of Clearing	For the purpose of:
215		Mechanical Removal	Drainage

1.5. Decision on application

Decision on Permit Application: Grant

Decision Date: 1 May 2014

2. Site Information

2.1. Existing environment and information

2.1.1. Description of the native vegetation under application

Vegetation Description	Clearing Description	Vegetation Condition	Comment
The vegetation under application is mapped as: Beard Vegetation Association 129 - Bare areas; drift sand Beard Vegetation Association 205 - Shrublands; Acacia sclerosperma & bowgada scrub Beard Vegetation Association 308 - Mosaic: Shrublands; Acacia sclerosperma sparse scrub / Succulent steppe; saltbush & bluebush (Shepherd et al, 2001).	Carnarvon Flood Mitigation Works.	Degraded: Structure severely disturbed; regeneration to good condition requires intensive management (Keighery 1994) To Very Good: Vegetation structure altered; obvious signs of disturbance (Keighery 1994)	The application is to increase the clearing footprint and include additional properties within 215 hectares for the purpose of constructing flood mitigation levees and associated works. The vegetation under application is typical of floodplain and claypan habitats. The project area is predominantly associated with Beard Vegetation Association 129 and 308. A minor incursion into Beard Vegetation Association 205 may occur during road works. The vegetation appears to range in condition from degraded to very good (Keighery 1994) and is likely to have been impacted from disturbances such as existing road infrastructure and un-controlled access given the proximity to Carnarvon townsite. The condition and description of the vegetation under application was determined via the use of aerial imagery and GHD consultants report (GHD 2012).

3. Assessment of application against clearing principles

Comments

This amendment has been made to increase the clearing footprint and include additional properties i.e. Lot 293 on Plan 173350, Giles Road reserve (PIN 11739228) and North West Coastal Highway road reserve (PIN 11739232).

The assessment against the clearing principles has not changed and can be found in Decision Report CPS 5237/1.

Methodology

References

- GHD (2012)
- Keighery (1994)
- Shepherd et al (2001)

GIS database:

- Carnarvon 1.4m Orthomosaic
- Interim Biogeographic Regionalisation of Australia
- DEC Tenure
- SAC Biodatasets (accessed March 2014)
- Soils, Statewide
- Pre European Vegetation

- Hydrography linear (hierarchy)

Planning instrument, Native Title, Previous EPA decision or other matter.

Comments

The portion of the proposed additional clearing which will affect the riparian vegetation of the Gascoyne River north of South River Road is covered by an existing Bed and Banks Permit (DoW 2014).

Carnarvon LCDC endorses the application, however, with the ongoing amendments to the Carnarvon Flood Mitigation Works, it is concerned that it will 'needlessly degrade aspects' of the natural environment (Carnarvon LCDC 2014).

The application area is located within the boundaries of the registered area of interest of the Gnulli Claimant, represented by the Yamatji Marpa Aboriginal Corporation. Both have been notified of the proposed clearing, however, no responses have been received.

4. References

- Carnarvon LCDC (2014) Advice received in relation to clearing permit application CPS 5237/2, received 22 March 2014. Carnarvon LCDC, Western Australia (DER Ref: A740167).
- DoW (2014) Advice received in relation to clearing permit application CPS 5237/2, received 26 March 2014. Department of Water, Western Australia (DER Ref: A741129).
- GHD (2012) - Report for Main Roads WA - Carnarvon Flood Mitigation Works (61/28516) (DEC Ref: A541528)
- Keighery, B.J. (1994) Bushland Plant Survey: A Guide to Plant Community Survey for the Community. Wildflower Society of WA (Inc). Nedlands, Western Australia.
- Shepherd, D.P., Beeston, G.R., and Hopkins, A.J.M. (2001), Native Vegetation in Western Australia. Technical Report 249. Department of Agriculture Western Australia, South Perth.