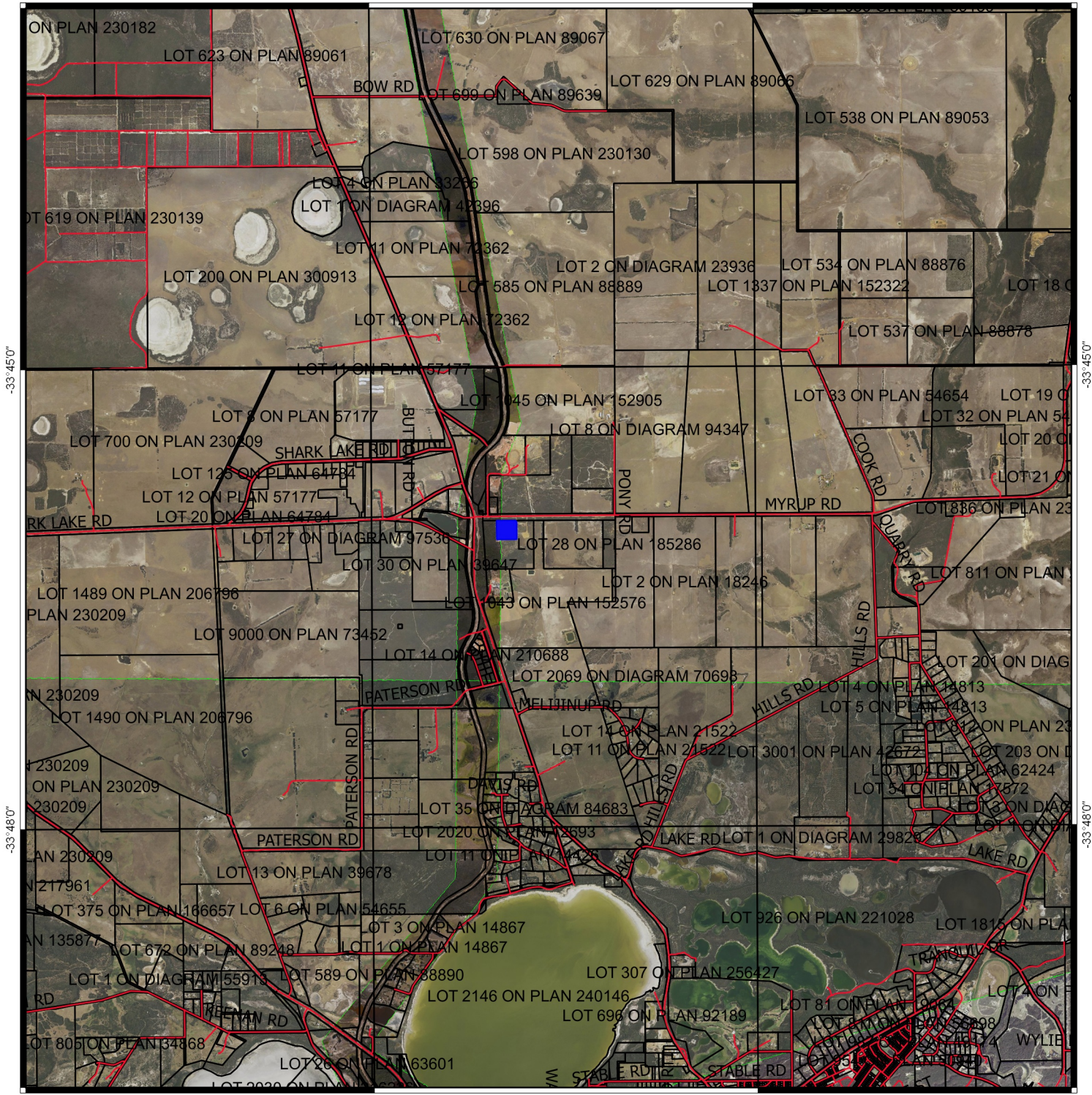


CPS 5330/3 - Context map

121°51'0"

121°54'0"

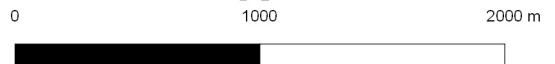


121°51'0"

121°54'0"

Legend

-  Areas applied to clear
-  Roads
-  Local Government Authority cadastre
-  Cadastre
-  WANow_Imagery



MGA 94
Geocentric Datum of Australia 1994

.....Date.....

Officer with delegated authority under Section 20
of the Environmental Protection Act 1986



**GOVERNMENT OF
WESTERN AUSTRALIA**