

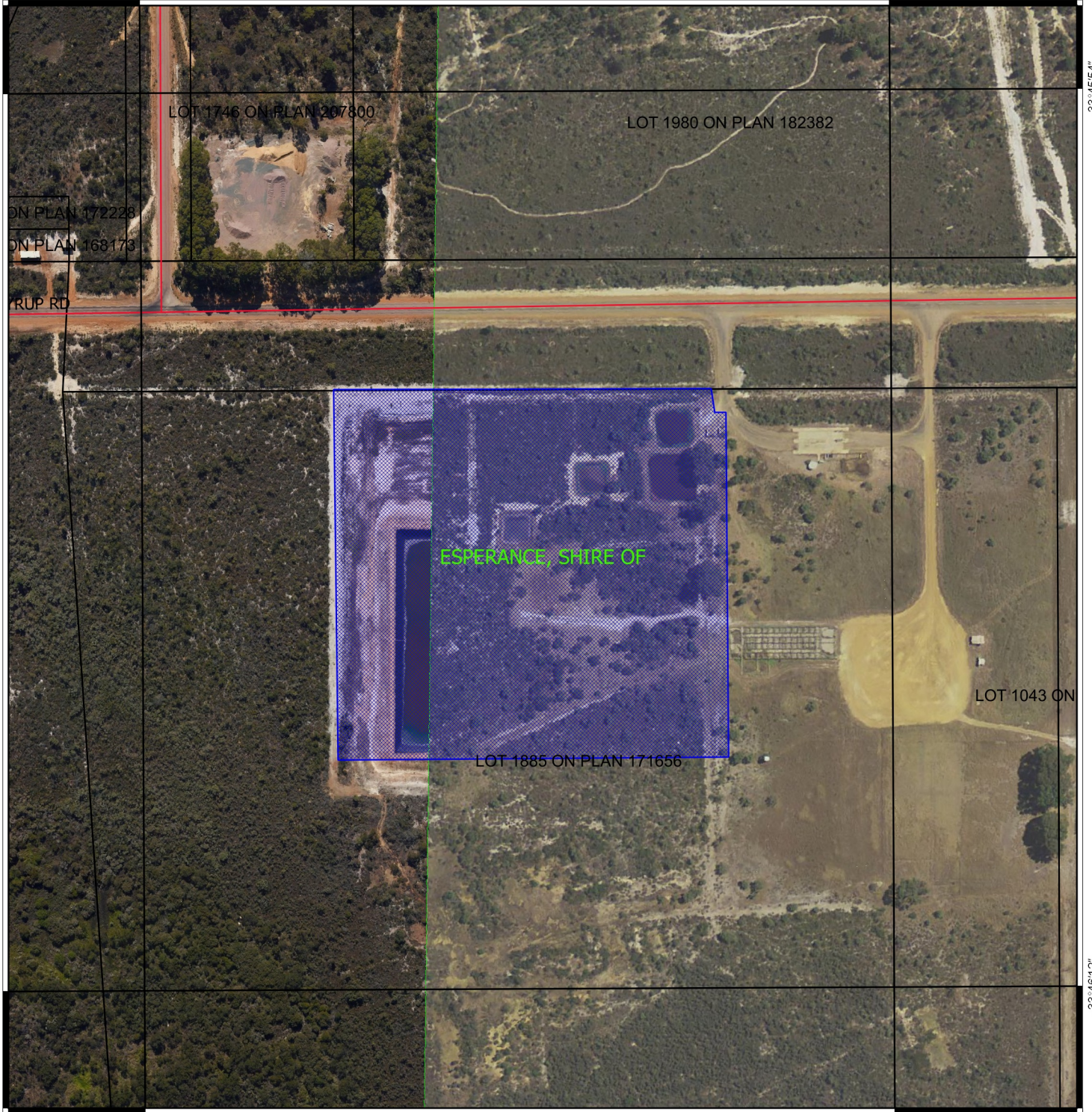
# CPS 5330/3 - Map

121°51'54"

121°52'12"

-33°45'54"

-33°45'54"



121°51'54"

121°52'12"

-33°46'12"

-33°46'12"

## Legend

-  Areas applied to clear
-  Roads
-  Local Government Authority cadastre
-  Cadastre
- WANow\_Imagery



0 1000 2000 m



MGA 94  
Geocentric Datum of Australia 1994

.....Date.....

Officer with delegated authority under Section 20  
of the Environmental Protection Act 1986



GOVERNMENT OF  
WESTERN AUSTRALIA