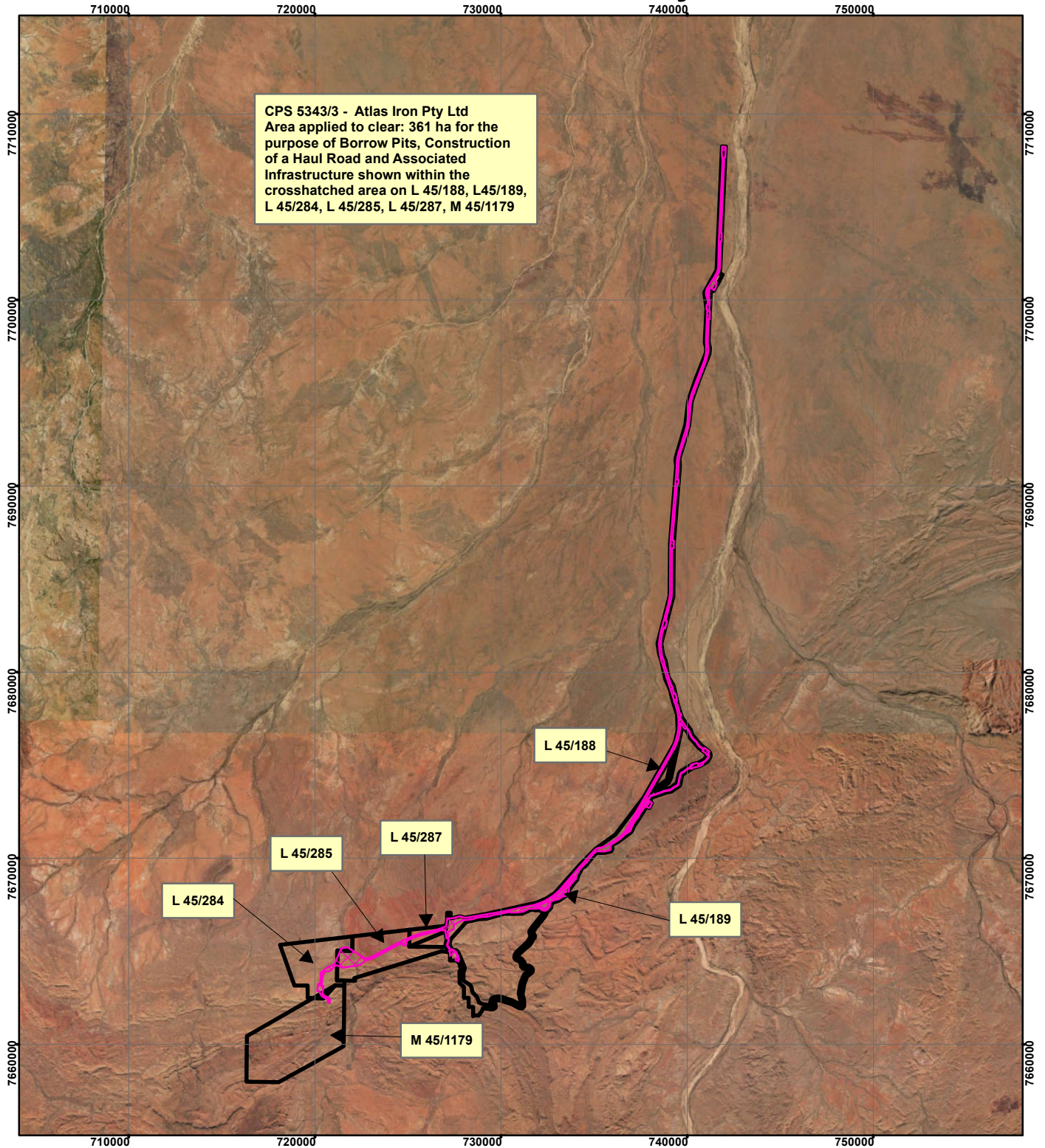




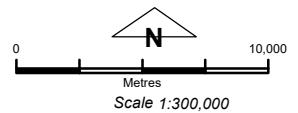
CPS 5343/3 - Atlas Iron Pty Ltd



CPS 5343/3 - Atlas Iron Pty Ltd
 Area applied to clear: 361 ha for the
 purpose of Borrow Pits, Construction
 of a Haul Road and Associated
 Infrastructure shown within the
 crosshatched area on L 45/188, L45/189,
 L 45/284, L 45/285, L 45/287, M 45/1179

Legend

-  Clearing Instruments
-  Mining Tenements



Geocentric Datum Australia 1994

Note: the data in this map have not been projected. This may result in geometric distortion or measurement inaccuracies.

..... Date

Officer with delegated authority under Section 20 of the Environmental Protection Act 1986

Information derived from this map should be confirmed with the data custodian acknowledged by the agency acronym in the legend.

