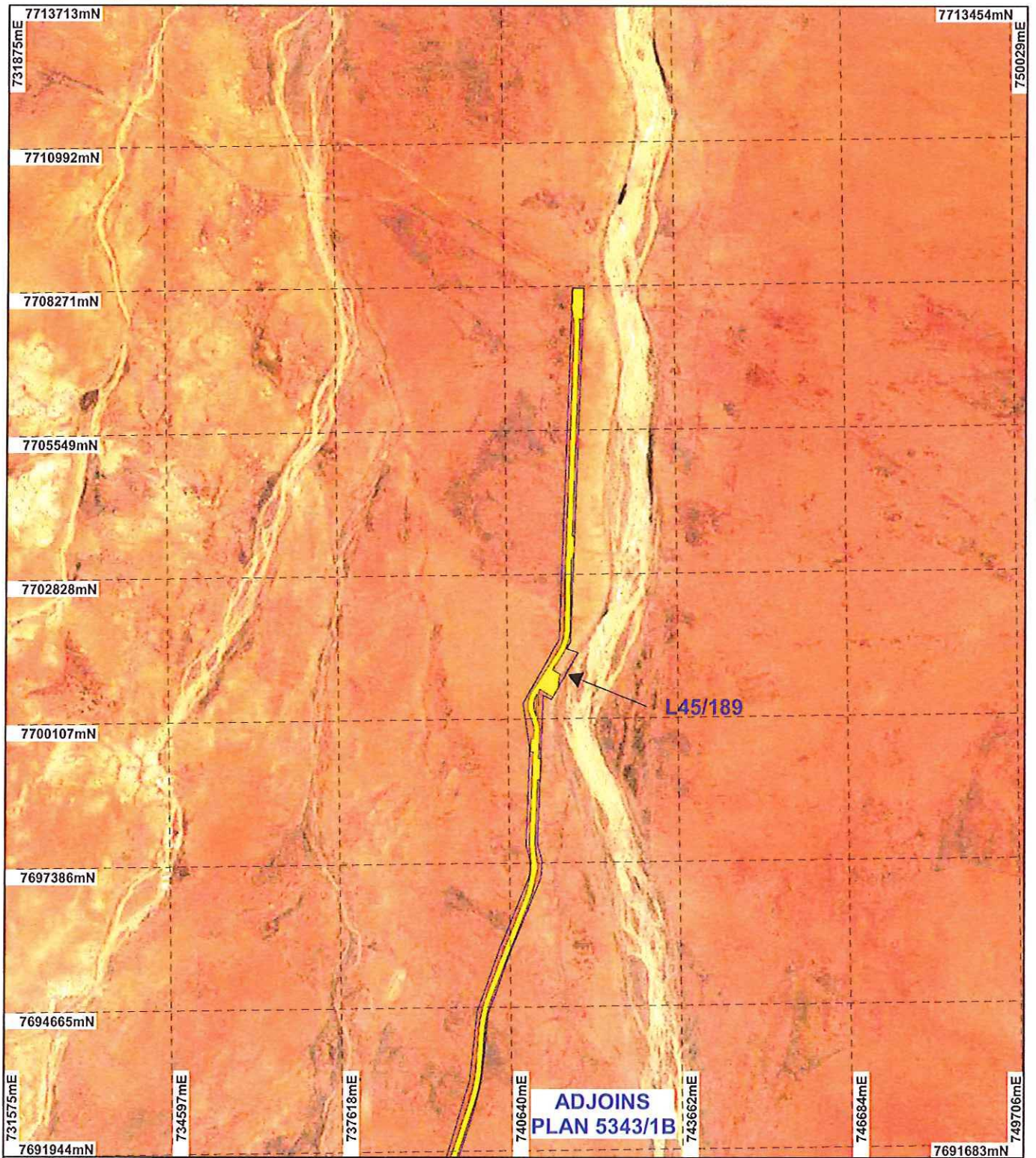
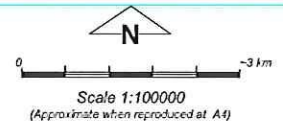


# PLAN 5343/1A



## LEGEND

- Mining Tenements
  - Clearing Instruments
  - Areas Approved to Clear
- Western Australia ETM 25m  
543 - AGO 2004



Geocentric Datum Australia 1994

Note: the data in this map have not been projected. This may result in geometric distortion or measurement inaccuracies.

PHIL GOREY

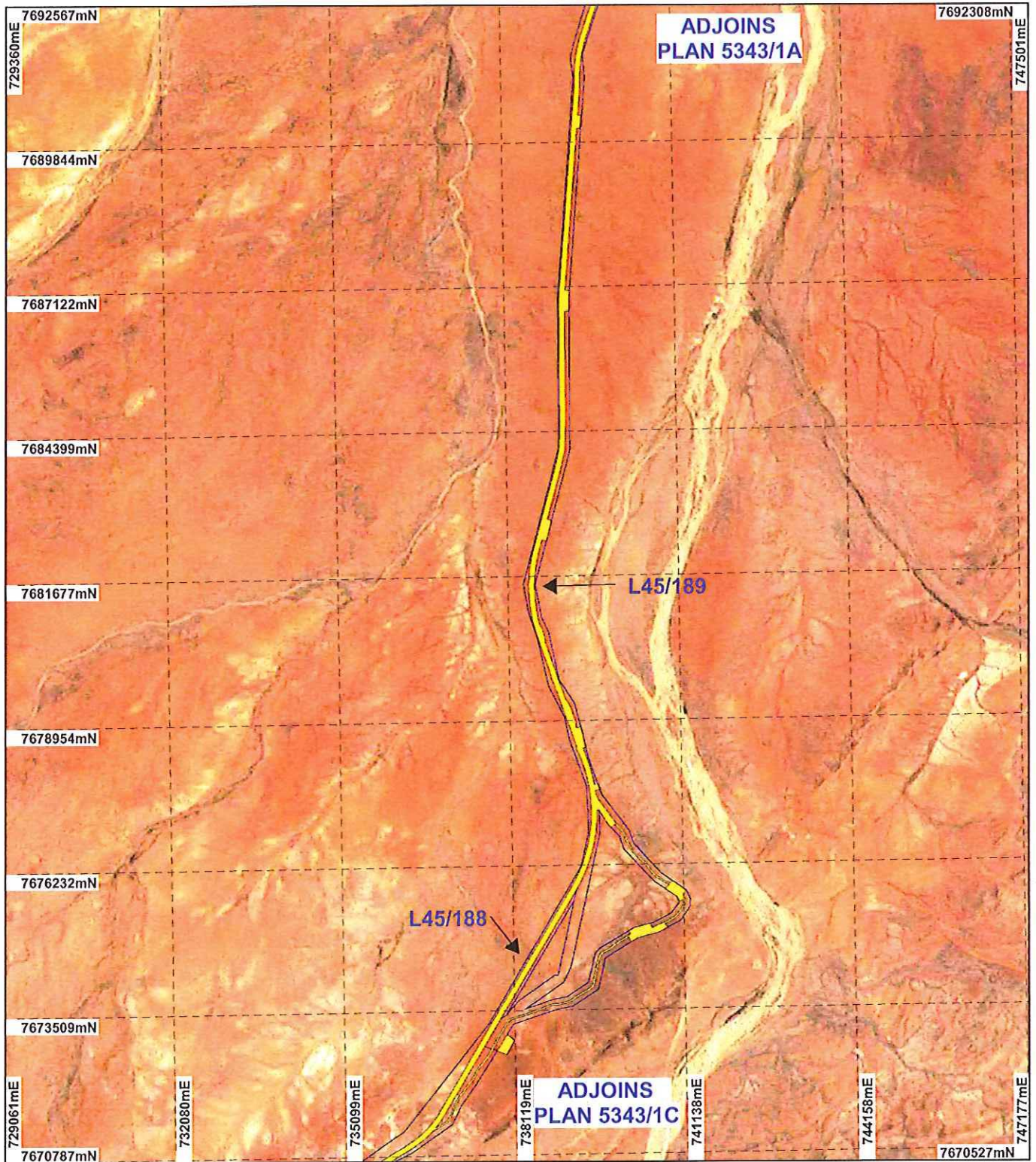
Officer with delegated authority under Section 20 of the Environmental Protection Act 1986

Information derived from this map should be confirmed with the data custodian acknowledged by the agency acronym in the legend.



WA Crown Copyright 2002

# PLAN 5343/1B



## LEGEND

- Mining Tenements
  - Clearing Instruments
  - Areas Approved to Clear
- Western Australia ETM 25m  
843 - AGO 2004



0 2.5 km

Scale 1:100000

(Approximate when reproduced at A4)

Geocentric Datum Australia 1994

Note: the data in this map have not been projected. This may result in geometric distortion or measurement inaccuracies.

Date 29/1/2013

PHIL GOREY  
Officer with delegated authority under Section 20 of  
the Environmental Protection Act 1986

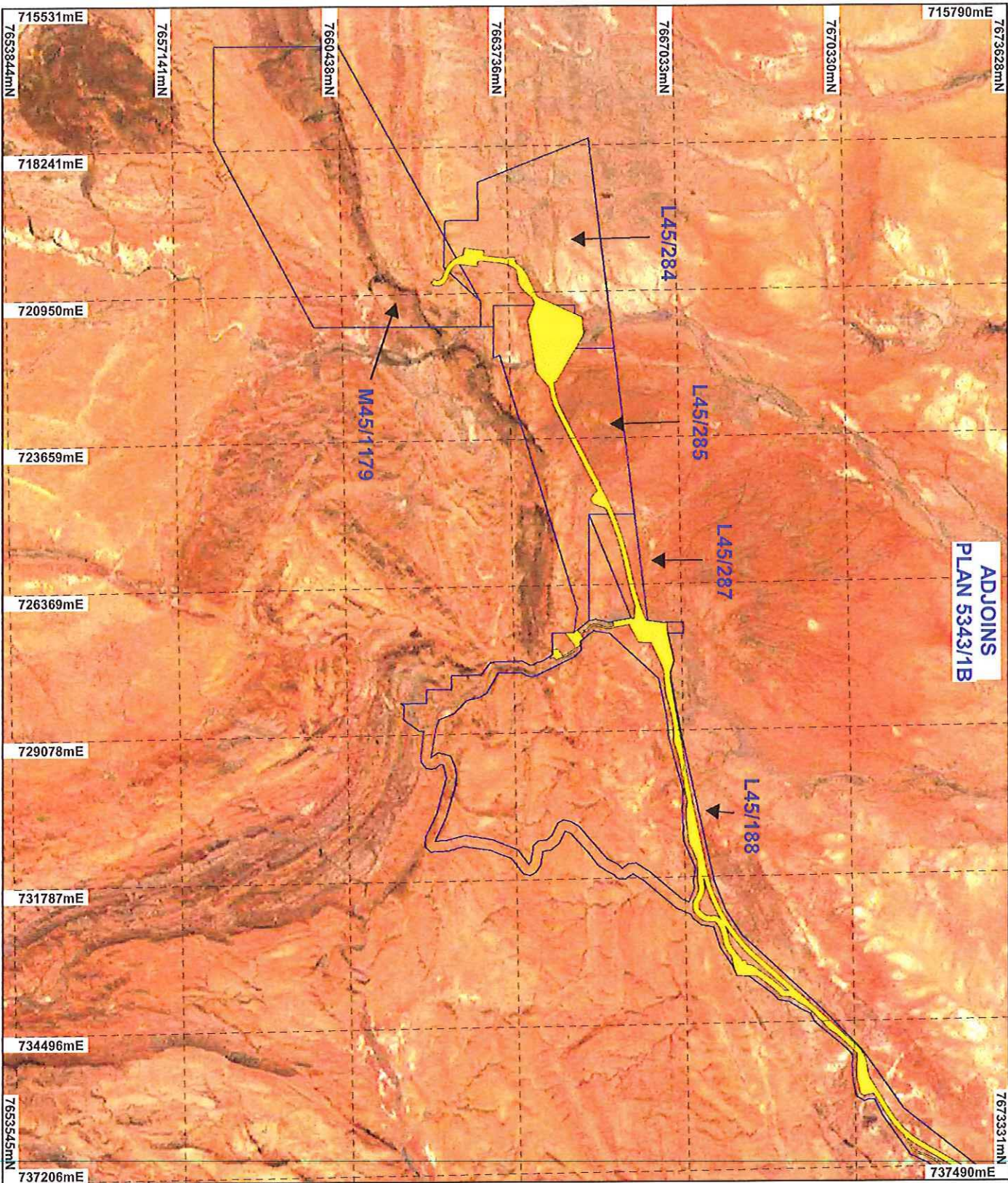
Information derived from this map should be  
confirmed with the data custodian acknowledged  
by the agency acronym in the legend.



WA Crown Copyright 12 2002

# PLAN 5343/1C

ADJOINS  
PLAN 5343/1B



## LEGEND

- Mining Tenements
  - Clearing Instruments
  - Areas Approved to Clear
- Western Australia ETM 25m S43 - AGO 2004

\* Project Data. This data has not been quality assured. Please contact map author for details.



0 ————— 3 km

Scale 1:100000

(Approximate when reproduced at A4)

Geocentric Datum Australia 1994

Note: the data in this map have not been projected. This may result in geometric distortion or measurement inaccuracies.

PHIL GORNEY

Officer with delegated authority under Section 20 of the Environmental Protection Act 1986

Information derived from this map should be confirmed with the data custodian acknowledged by the agency/acronym in the legend.

Date: 29/1/2013



WA Govt Copyright 2002